

A bright, empty room with white walls and a modern light fixture. A window looks out onto a brick building and greenery. A doorway leads to a kitchen with a washing machine and a window. The floor is covered in light-colored wood-look planks.

Burder Street

Loughborough

2 Bed Terraced House • LE11 1JJ • £950 pcm • £1,090 Deposit



Burder Street, Loughborough

Now available to let in Loughborough. A terraced, two bedroom home situated close to Loughborough Train Station. This unfurnished property has recently been refurbished throughout. Included is two reception rooms, extended kitchen, two double bedrooms, three piece shower room, and downstairs toilet. To the rear is a low maintenance garden. Parking available to the front of the property with a permit.

Sitting Room

Overlooking Burder Street, a living room, that could also be used as the dining room, study, bedroom or other.

Dining Room

The larger reception room, this room can be used as the diner or the living area.

Kitchen

A contemporary U-shaped kitchen, overlooking the rear garden. This recently refurbished room comes equipped with a new oven and hob.

Master Bedroom

The larger of the two bedrooms, this double bedroom over looks Burder Street and comes with built-in storage.

Bedroom Two

A second bedroom on the first floor, this double bedroom overlooks the rear garden.

Shower Room

Set on the first floor, this three-piece shower room comes with a walk-in shower, sink, and toilet.

Water Closet

Set on the ground floor, a practical water closet, including a sink, and toilet.

Garden

Set to the rear of the property, this garden is presented in great condition with new paving slabs.

Parking

Parking available on Burder Street with a parking permit.

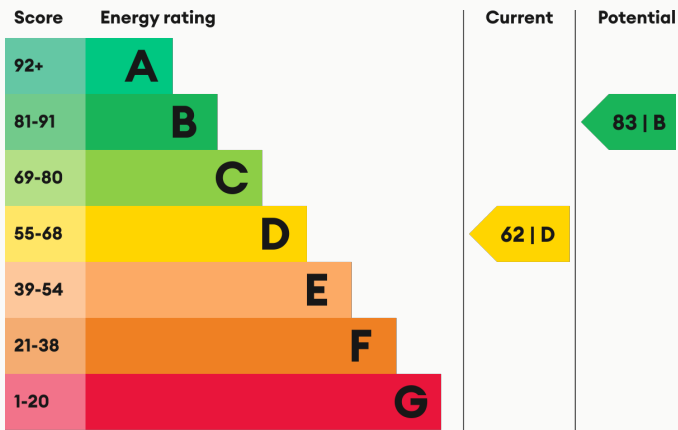
Heating

Gas-fired central heating.

Glazing

Modern, good quality, uPVC double glazing.

Energy Performance



We aim to make our particulars both accurate and reliable. However they are not guaranteed; nor do they form part of an offer or contract. If you require clarification on any points then please contact us, especially if you are traveling some distance to view. All measurements are to widest point.



Dining Room



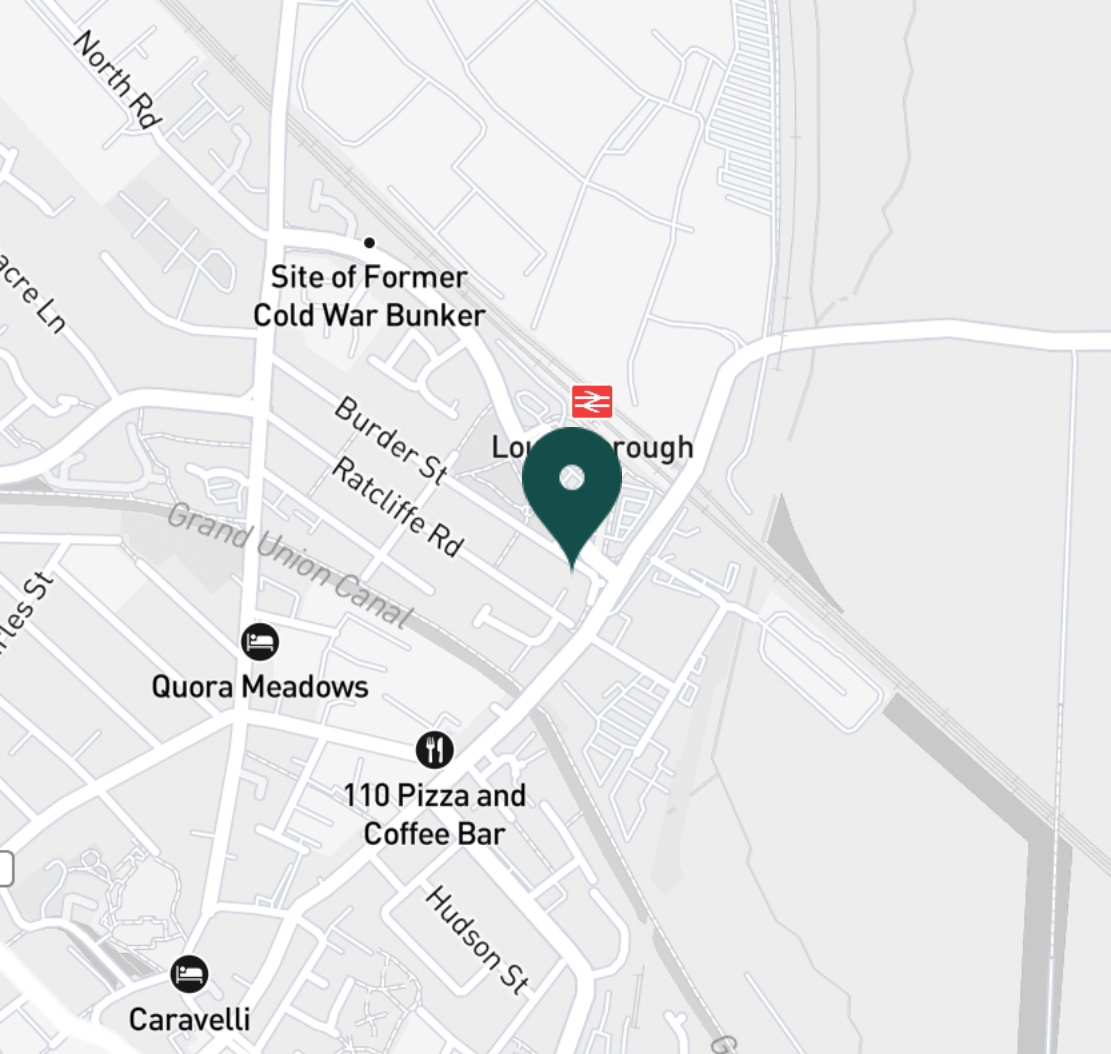
Dining Room



Kitchen



Kitchen



SUPERMARKETS

Aldi Loughborough	0.7 mi
Tesco Superstore Loughborough	0.9 mi
Marks & Spencer	1.0 mi
Lidl Loughborough	1.1 mi
Sainsburys Loughborough	1.3 mi

GYMS

CrossFit Loughborough	0.4 mi
PureGym Loughborough	0.7 mi
Anytime Fitness Loughborough	0.9 mi
Dynamite Gym Ltd	1.1 mi
NPC Performance Centre	1.4 mi

TRAIN STATIONS

Loughborough	0.6 mi
Barrow upon Soar	5.8 mi
Sileby	6.4 mi
East Midlands Parkway	10.4 mi
Syston	10.7 mi

NURSERY SCHOOLS

Babblebrooke Day Nursery	0.8 mi
Cobden Childrens Centre	0.9 mi
Small World Nursery	1.1 mi
Lime Tree Nursery	1.2 mi
Busy Bees in Loughborough	1.4 mi

PRIMARY SCHOOLS

Rendell Primary School	0.6 mi
Cobden PS	1.1 mi
Fairfield Preparatory Sch	1.4 mi
St Marys Catholic PS	1.4 mi
Loughborough CE PS	1.5 mi

HIGH SCHOOLS

Limehurst Academy	0.7 mi
RNIB College Loughborough	1.6 mi
Our Lady's Convent Sch	1.6 mi
Loughborough Grammar Sch	1.7 mi
Loughborough High Sch	1.7 mi

Discover
Loughborough





Kitchen



Kitchen



Sitting room



Sitting room



Sitting room



Master Bedroom



Master Bedroom



Master Bedroom



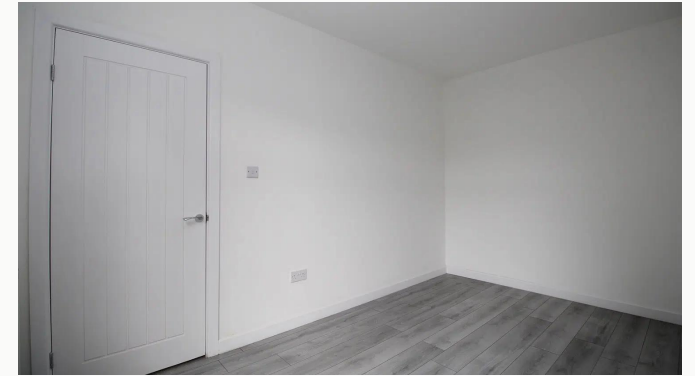
Master Bedroom



Bedroom Two



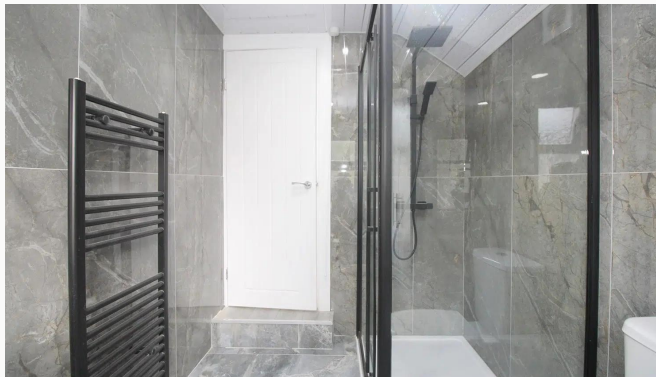
Bedroom Two



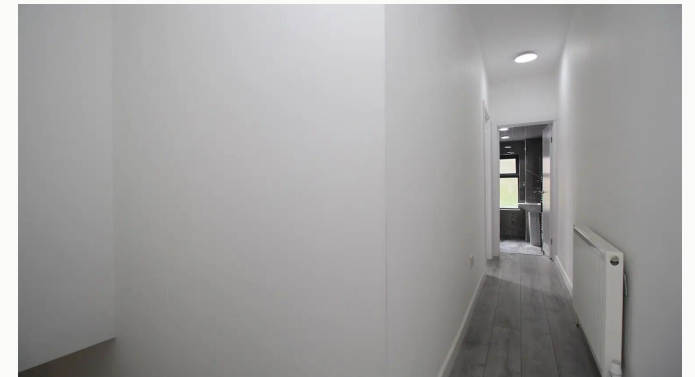
Bedroom Two



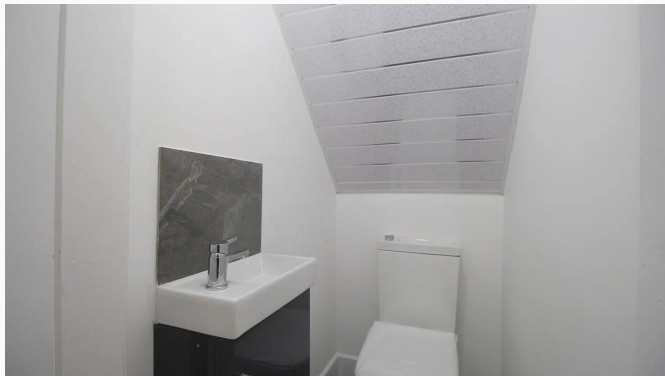
Shower Room



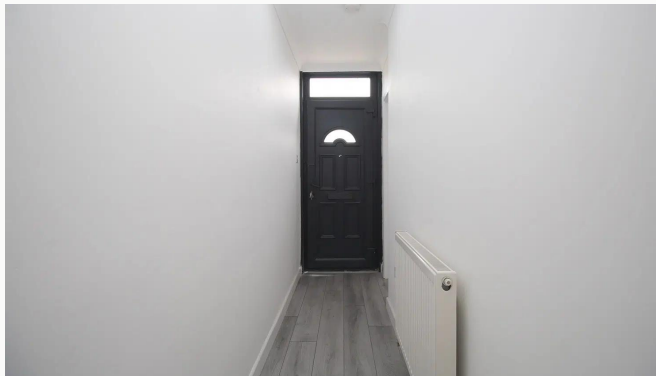
Shower Room



Landing



Water Closet



Hallway



Garden



Garden



Garden



Garden



Garden



Burder Street

Available
From 03/06/2025

Rent
£950 pcm

Comes
Unfurnished

Deposit
£1,090

Bedrooms
2

EPC
62 | D

Receptions
2

Council Tax Band
A

Bathrooms
1

ID
#16391

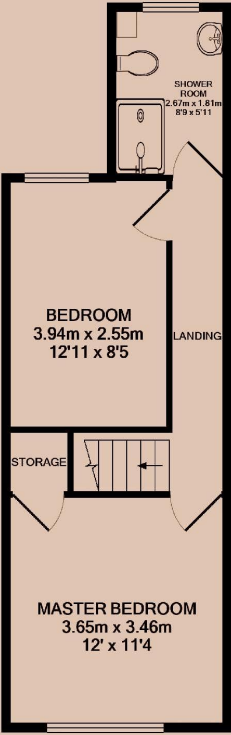
Parking
With permit

Updated
03/06/2025

Postcode
LE11 1JJ



GROUND FLOOR



1ST FLOOR

Have a property like this? Let's work together.

Design and marketing are at the heart of our approach. With most people now looking for property online, we can get our clients' properties in front of as many people as the most prominent national agents. Where we differ is in the quality of our work. We create stunning digital particulars that highlight the individual attributes of every property we market, with videos and floor plans as standard.



OUR OFFICE
7 Biggin Street
Loughborough, LE11 1UA

CONTACT US
01509 320 320
let@huntleys.net

