



The Mill

Loughborough

1 Bed 4th Floor Apartment • LE11 1FU • £1,075 pcm • £1,240 Deposit



The Mill, Loughborough

Set in the highest specification development that Loughborough has to offer. This premium, one-bed, unfurnished fourth-floor apartment is almost ready for occupation. In the developers own words "The Mill offers a prestigious collection of luxury apartments with residents gym, communal 'hot desk' area and meeting room, parking, daily concierge service~. This new 'Waterside Village' offers the perfect live, work and play living experience". Underfloor heating throughout. All photos are of actual property. Virtual tour available now.

Lounge / Diner

An open living and dining space, open to the kitchen. French doors give access to the Juliet balcony, with views of the canal.

Kitchen

A contemporary kitchen in grey with matching worktop. Hidden away behind the smart cabinets there are all the integrated appliances you'll need including fridge freezer, dual oven, washer-dryer, easy clean hob and a dishwasher. Open plan to the dining and living area.

Bedroom

A spacious double bedroom, overlooking The Waterside Village car park.

Bathroom

This beautiful three piece bathroom comes complete with a, heated towel rail, shaving point and underfloor heating. Classic, brick-bond tiling completes the look.

Gym

A communal gymnasium, available for "The Mill" residents to use, includes high-spec equipment.

Parking

Allocated parking for one car within the Waterside Village carpark, with visitor parking available.

Heating

Underfloor, central heating throughout.

Glazing

Modern, good quality, uPVC double glazing.

Energy Performance

Score	Energy rating	Current	Potential
92+	A		
81-91	B	81 B	81 B
69-80	C		
55-68	D		
39-54	E		
21-38	F		
1-20	G		

We aim to make our particulars both accurate and reliable. However they are not guaranteed; nor do they form part of an offer or contract. If you require clarification on any points then please contact us, especially if you are traveling some distance to view. All measurements are to widest point.



Kitchen / Diner



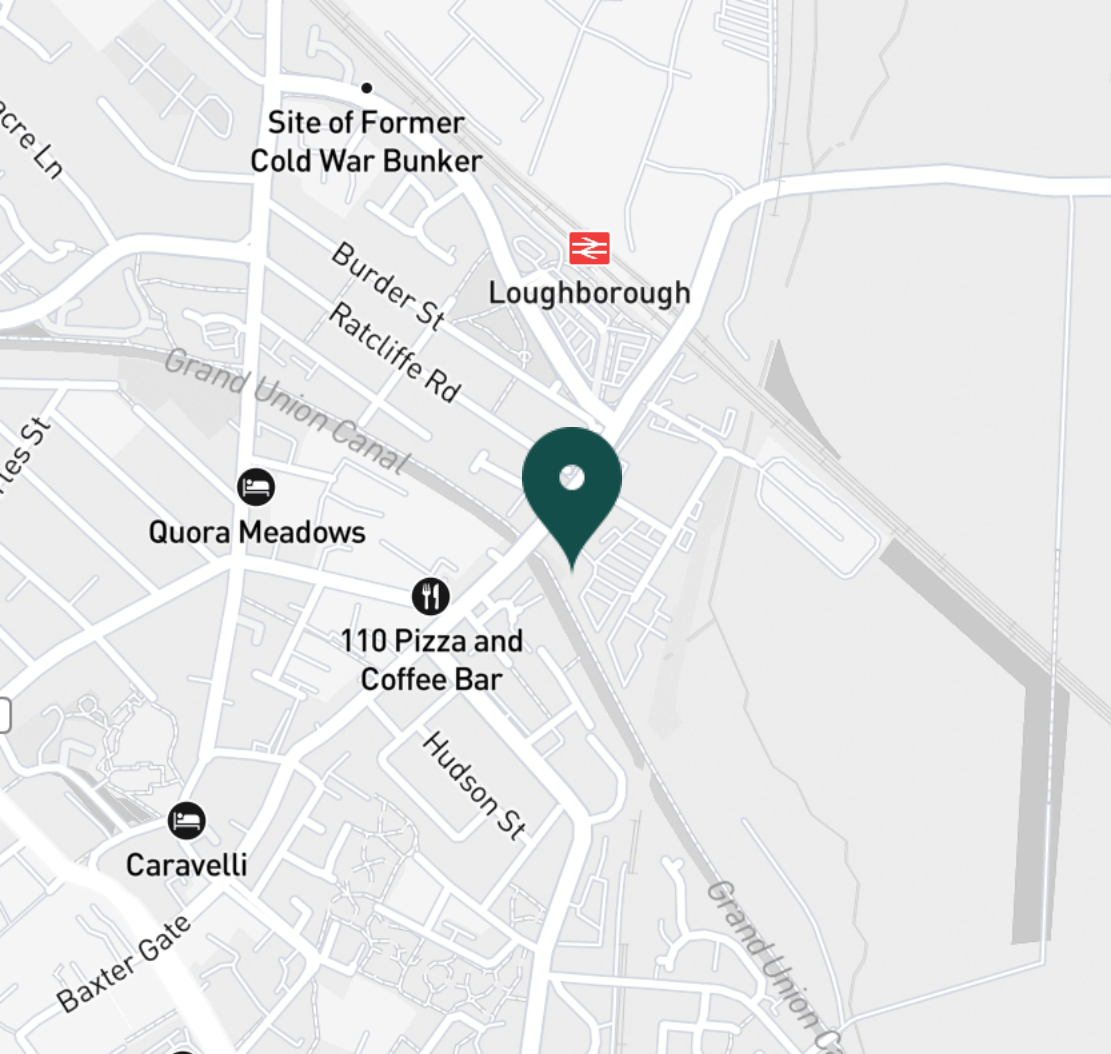
Kitchen / Diner



Lounge



Lounge / Diner



SUPERMARKETS

Marks & Spencer	0.8 mi
Tesco Superstore Loughborough	0.9 mi
Aldi Loughborough	1.1 mi
Lidl Loughborough	1.2 mi
Sainsburys Loughborough	1.3 mi

GYMS

CrossFit Loughborough	0.6 mi
PureGym Loughborough	0.8 mi
Anytime Fitness Loughborough	0.9 mi
Dynamite Gym Ltd	0.9 mi
NPC Performance Centre	1.1 mi

TRAIN STATIONS

Loughborough	0.4 mi
Barrow upon Soar	3.9 mi
Sileby	6.1 mi
Syston	10.1 mi
East Midlands Parkway	10.6 mi

NURSERY SCHOOLS

Cobden Childrens Centre	0.7 mi
Babblebrooke Day Nursery	0.8 mi
Lime Tree Nursery	0.9 mi
Small World Nursery	1.2 mi
Emmanuel PS	1.3 mi

PRIMARY SCHOOLS

Rendell Primary School	0.6 mi
Cobden PS	1.0 mi
Fairfield Preparatory Sch	1.0 mi
St Marys Catholic PS	1.4 mi
Loughborough Grammar Sch	1.4 mi

HIGH SCHOOLS

Limehurst Academy	0.7 mi
Loughborough Grammar Sch	1.4 mi
Our Lady's Convent Sch	1.4 mi
Loughborough High Sch	1.4 mi
RNIB College Loughborough	1.6 mi

Discover
Loughborough



- ✓ Communal Gym
- ✓ Canal Views
- ✓ Concierge Service
- ✓ Juliet Balcony
- ✓ Appliances Included
- ✓ Available Now

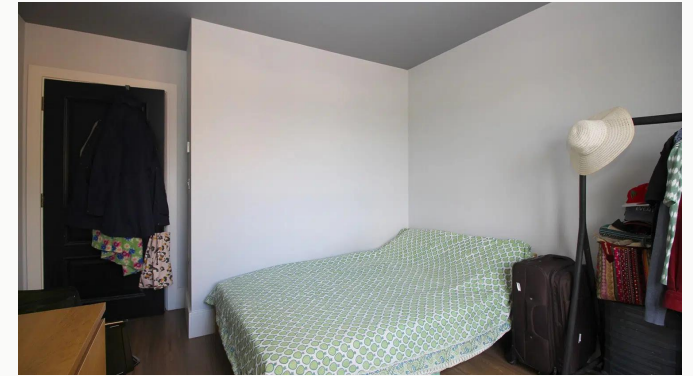




Kitchen / Diner



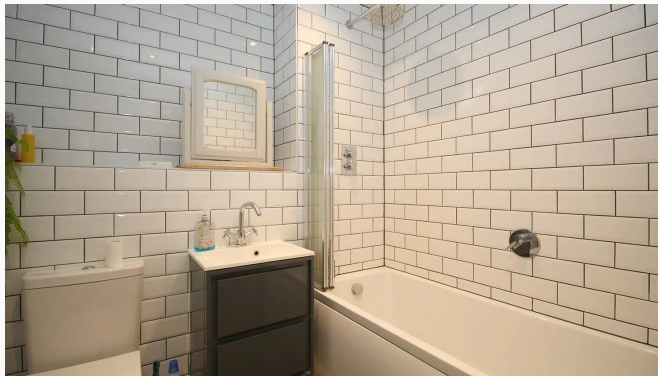
Bedroom



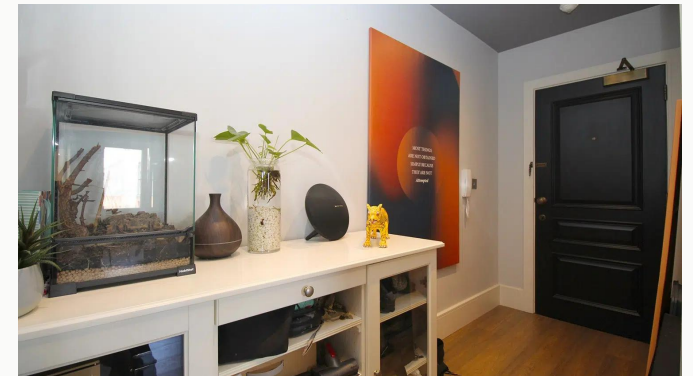
Bedroom



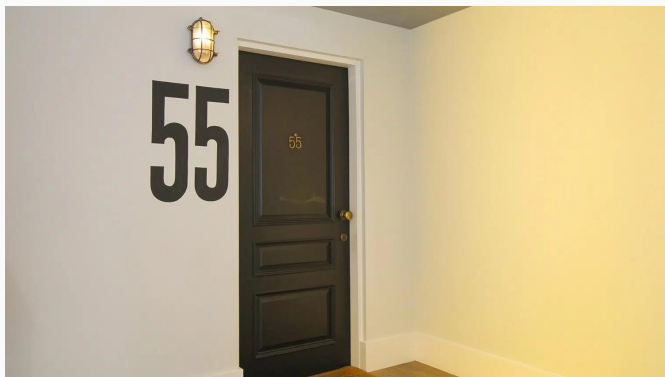
Bedroom



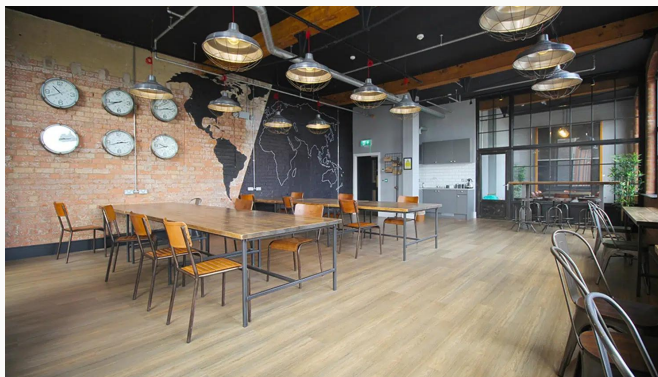
Bathroom



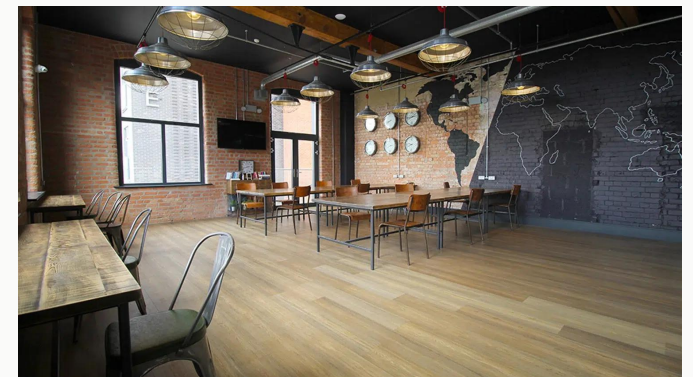
Hallway



Entrance



Office Area



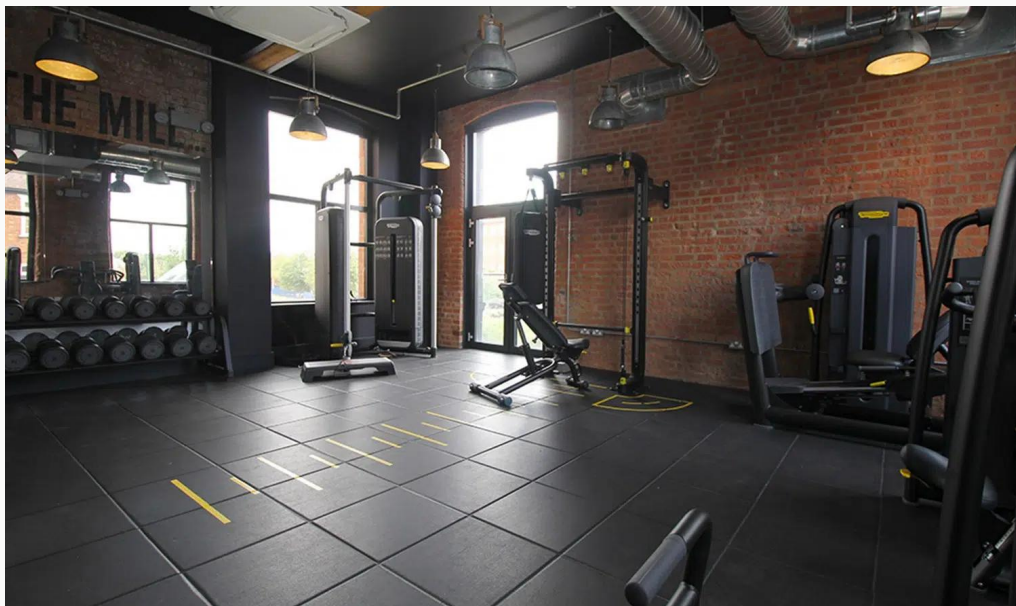
Office Area



Gym



Gym



Gym



The Mill

Available
From 29/05/2025

Comes
Unfurnished

Bedrooms
1

Receptions
1

Bathrooms
1

Parking
Ask Agent

Postcode
LE11 1FU

Rent
£1,075 pcm

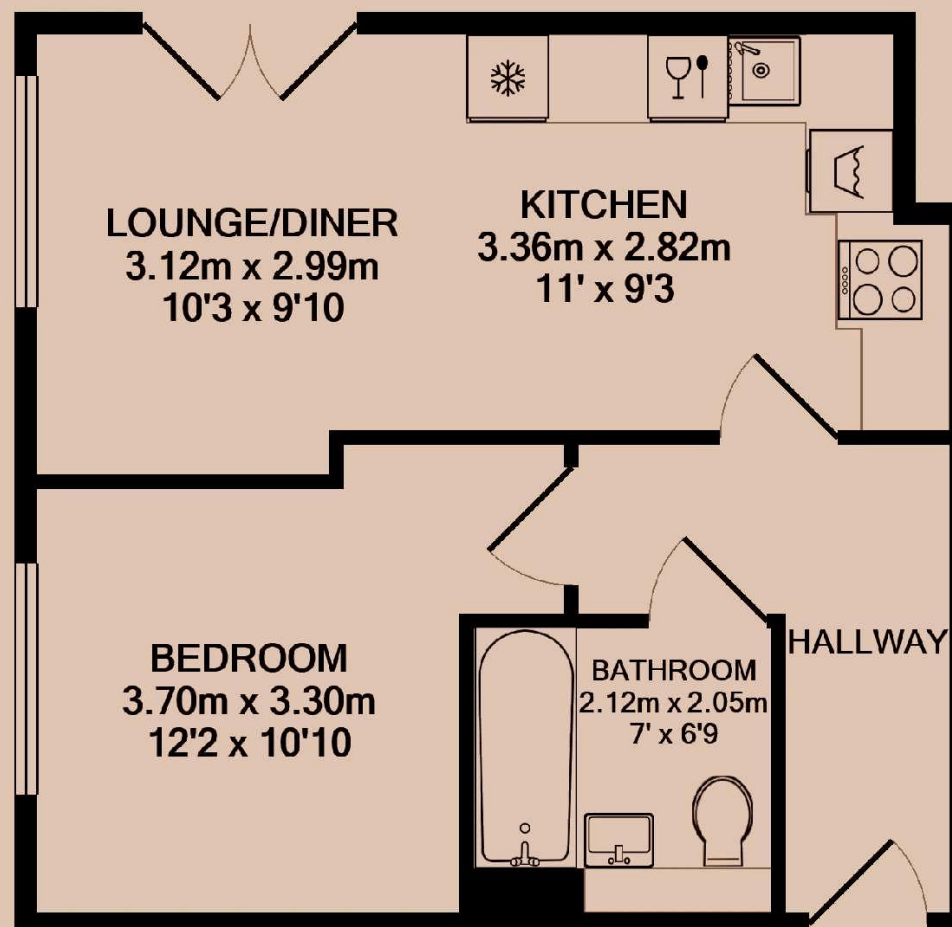
Deposit
£1,240

EPC
81 | B

Council Tax Band
B

ID
#8487

Updated
30/05/2025



Have a property like this? Let's work together.

Design and marketing are at the heart of our approach. With most people now looking for property online, we can get our clients' properties in front of as many people as the most prominent national agents. Where we differ is in the quality of our work. We create stunning digital particulars that highlight the individual attributes of every property we market, with videos and floor plans as standard.



OUR OFFICE
7 Biggin Street
Loughborough, LE11 1UA

CONTACT US
01509 320 320
let@huntleys.net

