

The image shows a bright, modern apartment interior. In the foreground, a red leather sofa is partially visible. In the center, a red leather armchair sits on a light-colored wooden floor. To the left, a large black television is mounted on a wooden and black metal stand. A large window with a black frame is on the left wall. In the background, a kitchen with grey cabinets and a white tiled backsplash is visible. A dining table with metal chairs is also seen. A small wooden coffee table with a black metal frame is in front of the armchair. A single pendant light hangs from the ceiling.

Langdale Grange

Melton Mowbray

1 Bed 1st Floor Apartment • LE13 0DA • £825 pcm • £950 Deposit



Langdale Grange, Melton Mowbray

Set within a high specification, Solus Homes development in Melton Mowbray. This newly built, premium first-floor apartment will soon be available for occupation. Comes with a double-bedroom, large bathroom, spacious kitchen/living area, underfloor heating throughout & two allocated parking spaces. PLEASE NOTE: Photos and video tour are of similar apartment within the same block.

Kitchen 4.01m (13'2) x 3.25m (10'8)

A contemporary kitchen in charcoal with matching worktop and brick-bond tiling. Hidden away behind the smart cabinets there are all the integrated appliances including a fridge-freezer, fan assisted oven, washing machine, easy-clean hob and a dishwasher. Open plan to living area.

Living Room 4.59m (15'1) x 4.01m (13'2)

Contemporary living area that is open plan to the kitchen and runs the full depth of the apartment. This spacious room benefits from underfloor heating.

Master Bedroom 3.5m (11'6) x 3.03m (9'11)

An elegant and spacious double bedroom, comes complete with a large built in wardrobe and underfloor heating.

Bathroom 2.17m (7'1) x 2m (6'7)

This beautiful three-piece bathroom comes complete with a shower over the bath and a heated towel rail. Classic brick-bond tiling completes the look.

Parking

Two allocated bays within the property boundary with further visitor spaces available.

Underfloor Heating

Gas fired central, underfloor heating.

Glazing

Modern, good quality, uPVC double glazing.

Energy Performance

Score	Energy rating	Current	Potential
92+	A		
81-91	B	83 B	83 B
69-80	C		
55-68	D		
39-54	E		
21-38	F		
1-20	G		

We aim to make our particulars both accurate and reliable. However they are not guaranteed; nor do they form part of an offer or contract. If you require clarification on any points then please contact us, especially if you are traveling some distance to view. All measurements are to widest point.



Lounge



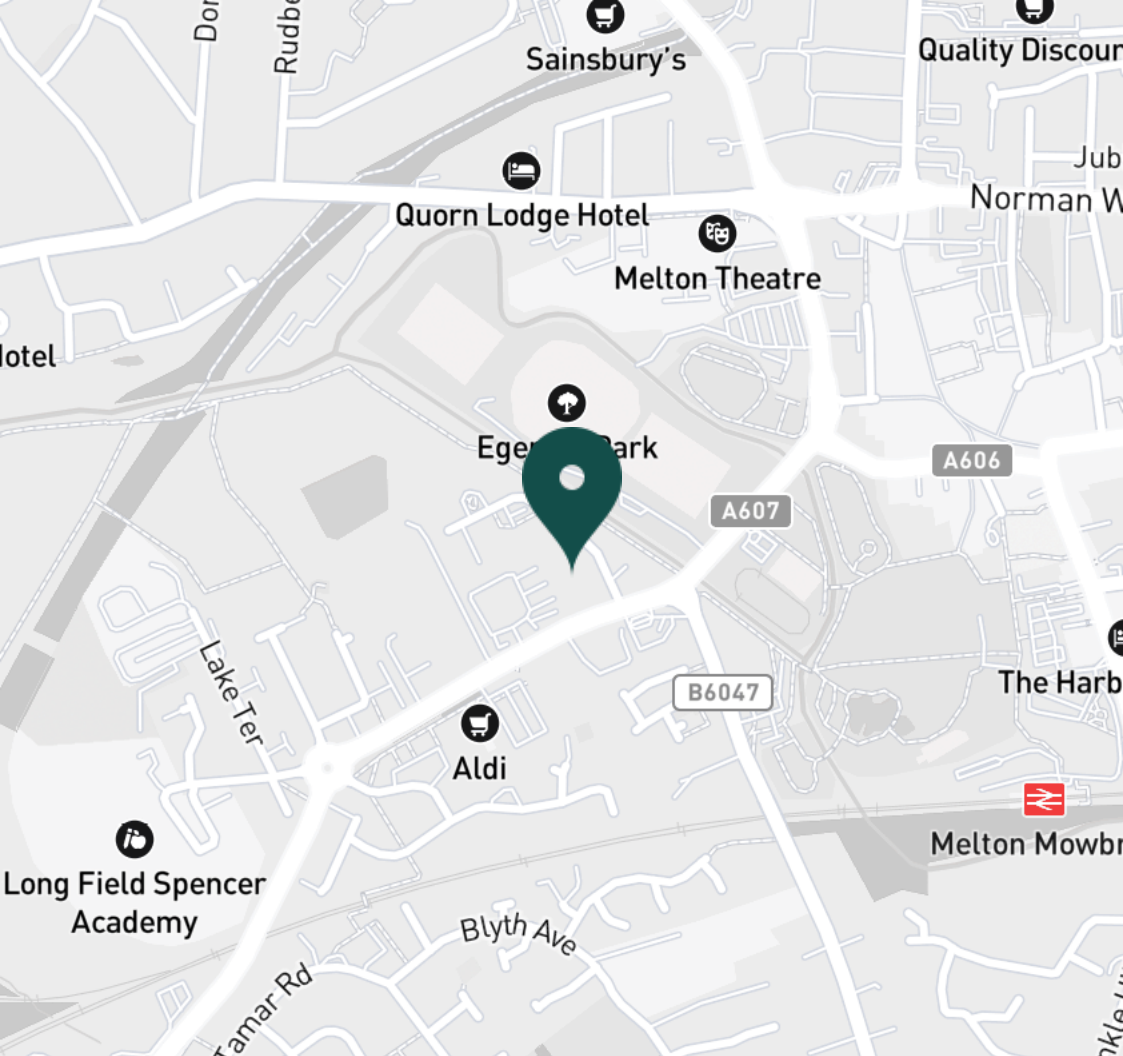
Lounge



Kitchen



Bedroom



SUPERMARKETS

Sainsburys Melton	0.7 mi
Aldi Syston	9.7 mi
Asda Thurmaston	12.2 mi
Co-op Food Barrow Upon Soar	13.3 mi
Sainsburys Melton Rd	13.4 mi

GYMS

Waterfield Leisure Pool	0.4 mi
Bodyworx Gym & Fitness	1.0 mi
Fosse Fitness 365	10.5 mi
Total Fitness Centre	12.0 mi
Physfit Gyms	12.1 mi

TRAIN STATIONS

Melton Mowbray	1.3 mi
Syston	10.1 mi
Sileby	12.1 mi
Barrow upon Soar	12.8 mi
Loughborough	14.9 mi

NURSERY SCHOOLS

The Laurels	8.8 mi
Leicester Montessori Day N	9.9 mi
Broad Street Playgroup	10.2 mi
Ratcliffe College NS	11.4 mi
Sileby Day Nursery	11.5 mi

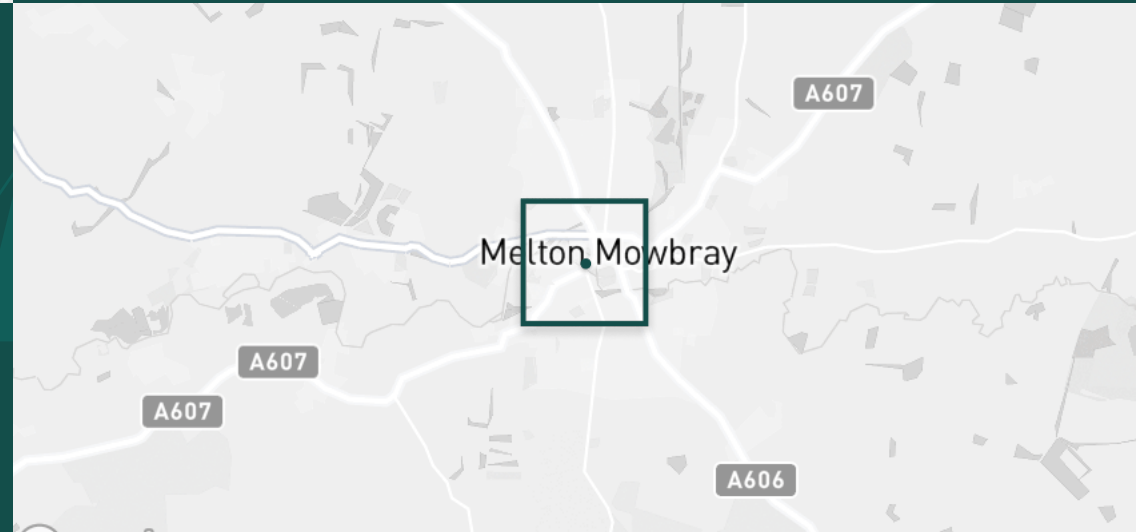
PRIMARY SCHOOLS

Thrussington CE Sch	7.5 mi
Broomfield County PS	8.9 mi
St Peter & St Paul CE Academy	9.7 mi
Willoughby PS	10.1 mi
Wymeswold CE PS	11.0 mi

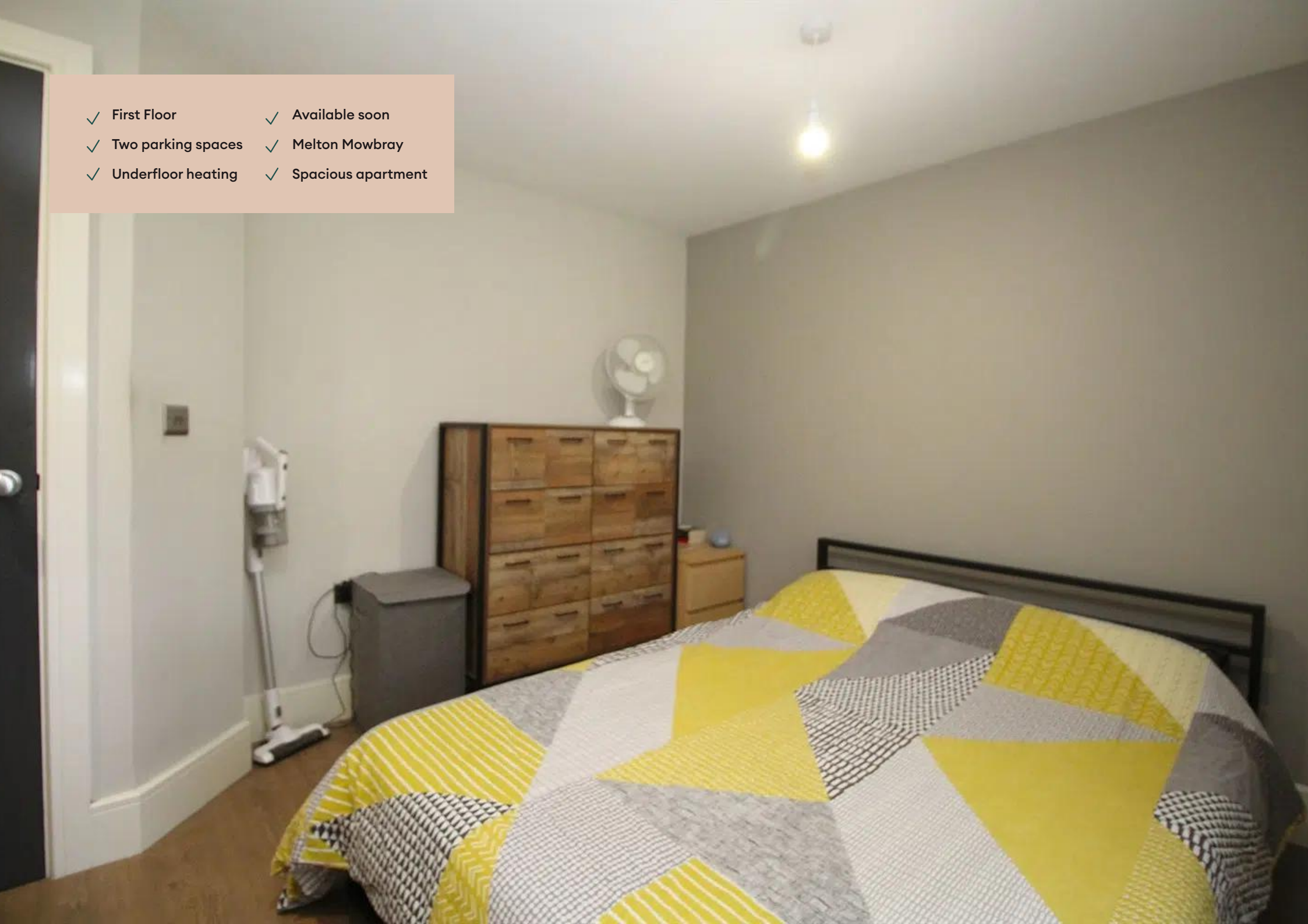
HIGH SCHOOLS

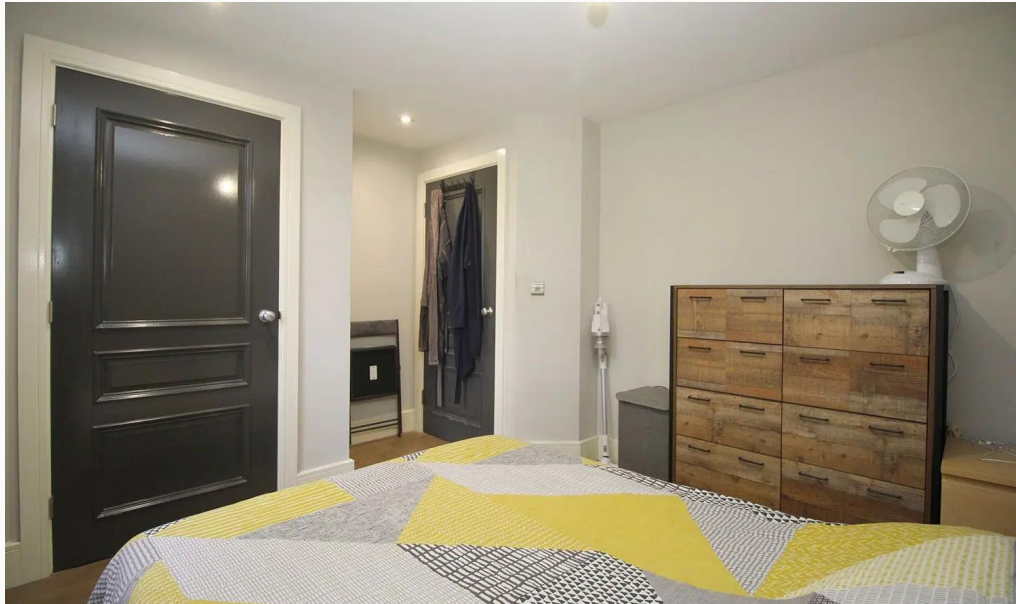
Ratcliffe College	11.4 mi
The Roundhill Academy	12.0 mi
Humphrey Perkins High Sch	13.5 mi
Rushey Mead Academy	13.8 mi
Limehurst Academy	15.3 mi

Discover
Melton Mowbray



- ✓ First Floor
- ✓ Two parking spaces
- ✓ Underfloor heating
- ✓ Available soon
- ✓ Melton Mowbray
- ✓ Spacious apartment





Bedroom



Bedroom



Bathroom



Hallway



Langdale Grange



Car Park



Car Park

Available
From 19/06/2025

Comes
Unfurnished

Bedrooms
1

Receptions
1

Bathrooms
1

Parking
Allocated

Postcode
LE13 0DA

Rent
£825 pcm

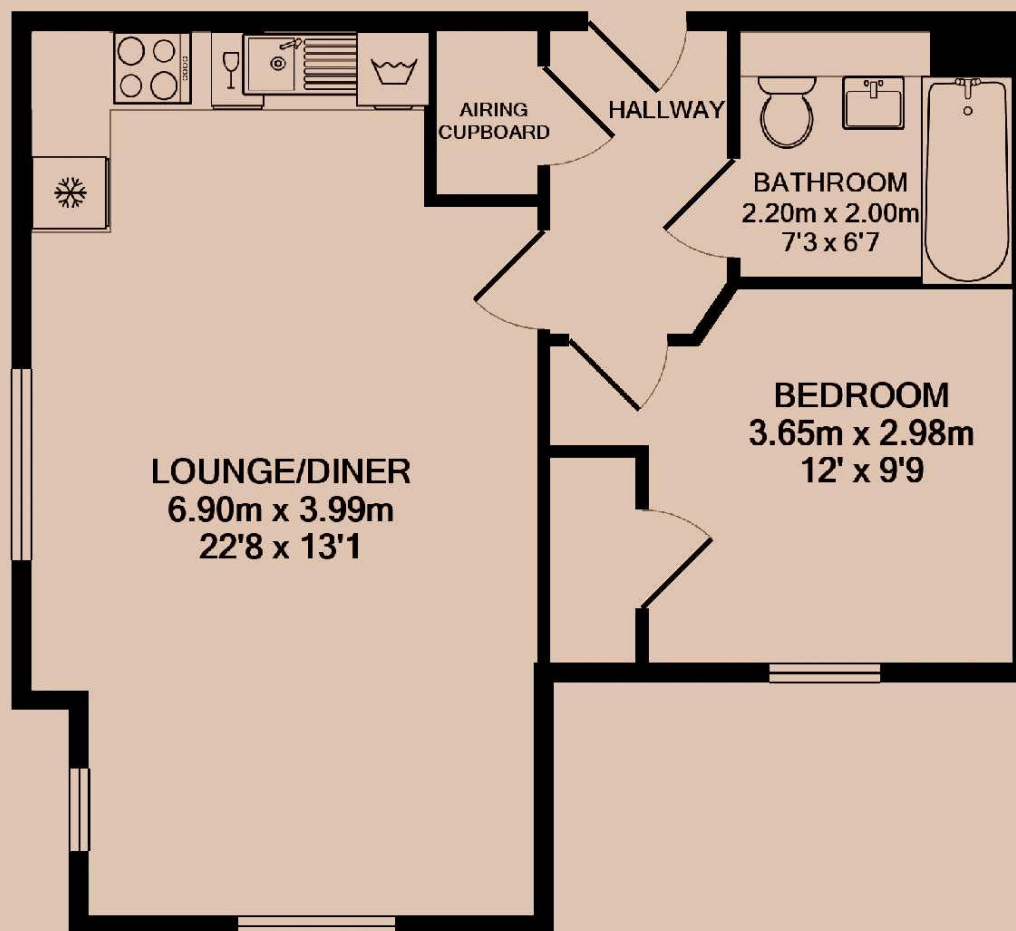
Deposit
£950

EPC
83 | B

Council Tax Band
B

ID
#8451

Updated
28/05/2025



Have a property like this? Let's work together.

Design and marketing are at the heart of our approach. With most people now looking for property online, we can get our clients' properties in front of as many people as the most prominent national agents. Where we differ is in the quality of our work. We create stunning digital particulars that highlight the individual attributes of every property we market, with videos and floor plans as standard.



OUR OFFICE
7 Biggin Street
Loughborough, LE11 1UA

CONTACT US
01509 320 320
let@huntleys.net

