



# *Granger Court*

## Loughborough

1 Bed 2nd Floor Apartment • LE11 5DP • £675 pcm • £770 Deposit



## Granger Court, Loughborough

Set close to Loughborough Town Centre, this one-bedroom apartment is now available to let. Presented in great condition, this unfurnished and recently refurbished apartment comes with an open lounge and kitchen separated by a breakfast bar, double bedroom, three-piece bathroom and storage room.

### Lounge / Diner

Open to the kitchen area, separated by a breakfast bar. A sizeable and bright living space.

### Kitchen

Open to the lounge, an ample sized kitchen including an oven, and hob. Space for other appliances provided.

### Bedroom

A good-sized double bedroom, including built-in wardrobe space.

### Bathroom

A three piece bathroom, including a bath, sink, toilet and shower above the bath.

### Store Room

Situated by the entrance, a practical storage room.

### Parking

Unallocated parking situated to the rear of the property, but please note this parking area is a "first come, first serve" basis. There is further parking available on nearby streets, available with a parking permit.

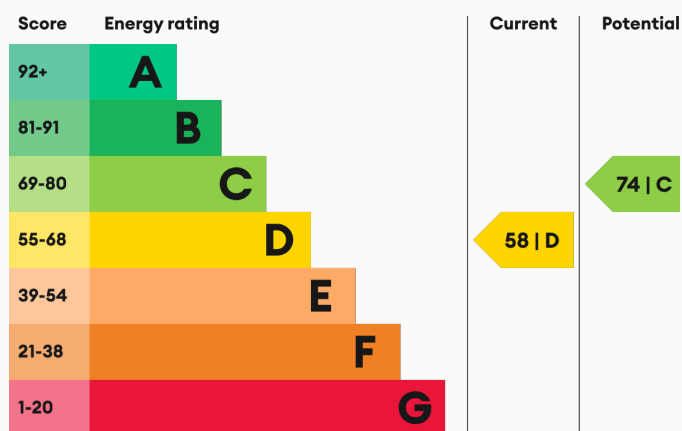
### Heating

Gas-fired central heating.

### Glazing

Modern, good quality, uPVC double glazing.

### Energy Performance



We aim to make our particulars both accurate and reliable. However they are not guaranteed; nor do they form part of an offer or contract. If you require clarification on any points then please contact us, especially if you are traveling some distance to view. All measurements are to widest point.



Lounge / Diner



Lounge / Diner

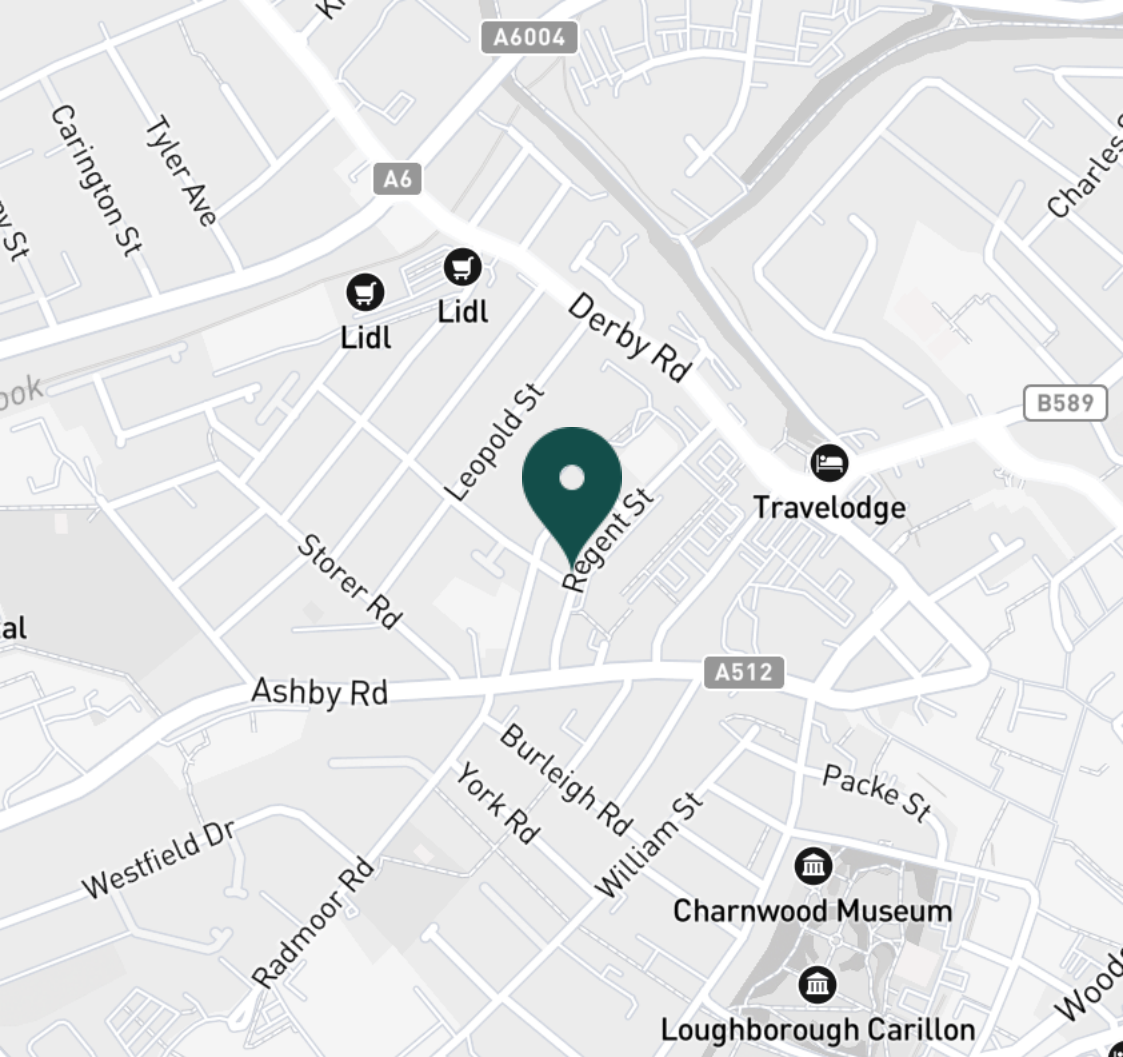


Kitchen



Kitchen





#### SUPERMARKETS

Sainsburys Loughborough	0.3 mi
Tesco Superstore Loughborough	0.3 mi
Lidl Loughborough	0.4 mi
Marks & Spencer	0.4 mi
Aldi Loughborough	0.8 mi

#### GYMS

Anytime Fitness Loughborough	0.3 mi
PureGym Loughborough	0.4 mi
CrossFit Loughborough	0.7 mi
Loughborough University Pool	0.8 mi
Fit4Less	0.8 mi

#### TRAIN STATIONS

Loughborough	1.2 mi
Barrow upon Soar	4.3 mi
Sileby	6.1 mi
East Midlands Parkway	9.8 mi
Syston	10.4 mi

#### NURSERY SCHOOLS

Busy Bees in Loughborough	0.2 mi
Kingscliffe Day Nursery	0.2 mi
Small World Nursery	0.3 mi
Babblebrooke Day Nursery	0.4 mi
Little House Day Nursery	0.8 mi

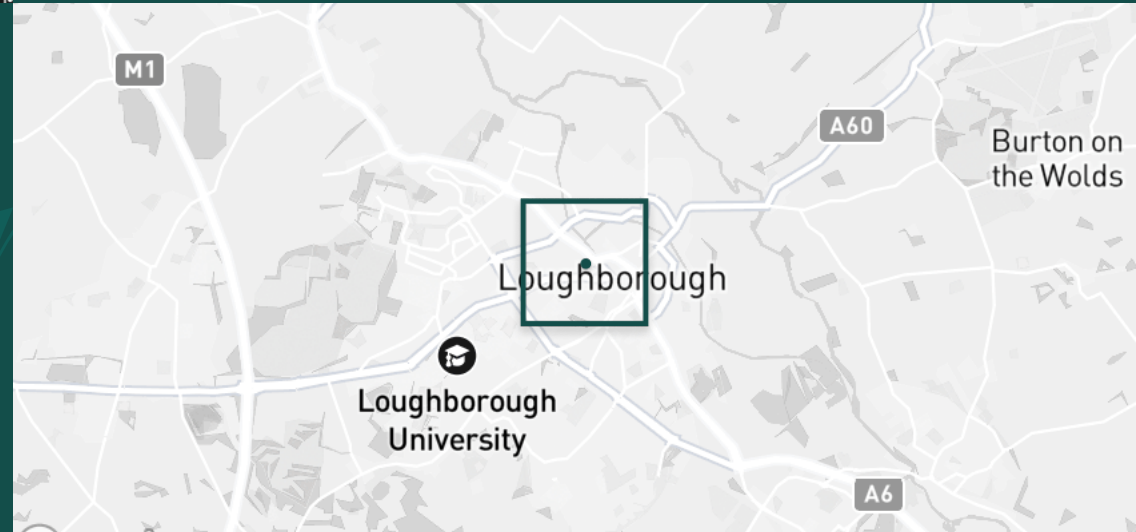
#### PRIMARY SCHOOLS

St Marys Catholic PS	0.2 mi
Loughborough CE PS	0.5 mi
Rendell Primary School	0.7 mi
Cobden PS	0.9 mi
Our Lady's Convent Sch	1.1 mi

#### HIGH SCHOOLS

RNIB College Loughborough	0.4 mi
Limehurst Academy	0.5 mi
Lboro Uni School Of The Arts	0.7 mi
Loughborough College	0.9 mi
Our Lady's Convent Sch	1.1 mi

Discover  
*Loughborough*



- ✓ One Bedroom Apartment
- ✓ Great Condition
- ✓ Second Floor
- ✓ Town Centre
- ✓ Available Now
- ✓ Loughborough







Kitchen



Bedroom



Bedroom



Bedroom



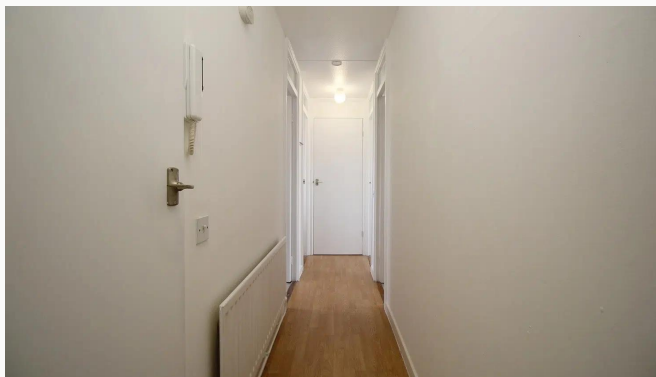
Bedroom



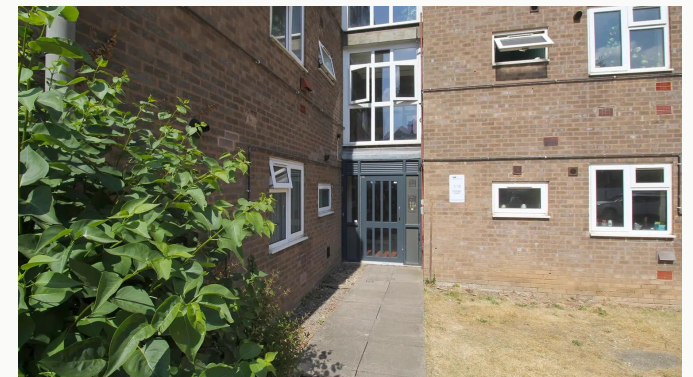
Bathroom



Store



Hallway



Block Entrance



Granger Court



Granger Court

**Available**  
From 22/05/2025

**Comes**  
Unfurnished

**Bedrooms**  
1

**Receptions**  
1

**Bathrooms**  
1

**Parking**  
With permit

**Postcode**  
LE11 5DP

**Rent**  
£675 pcm

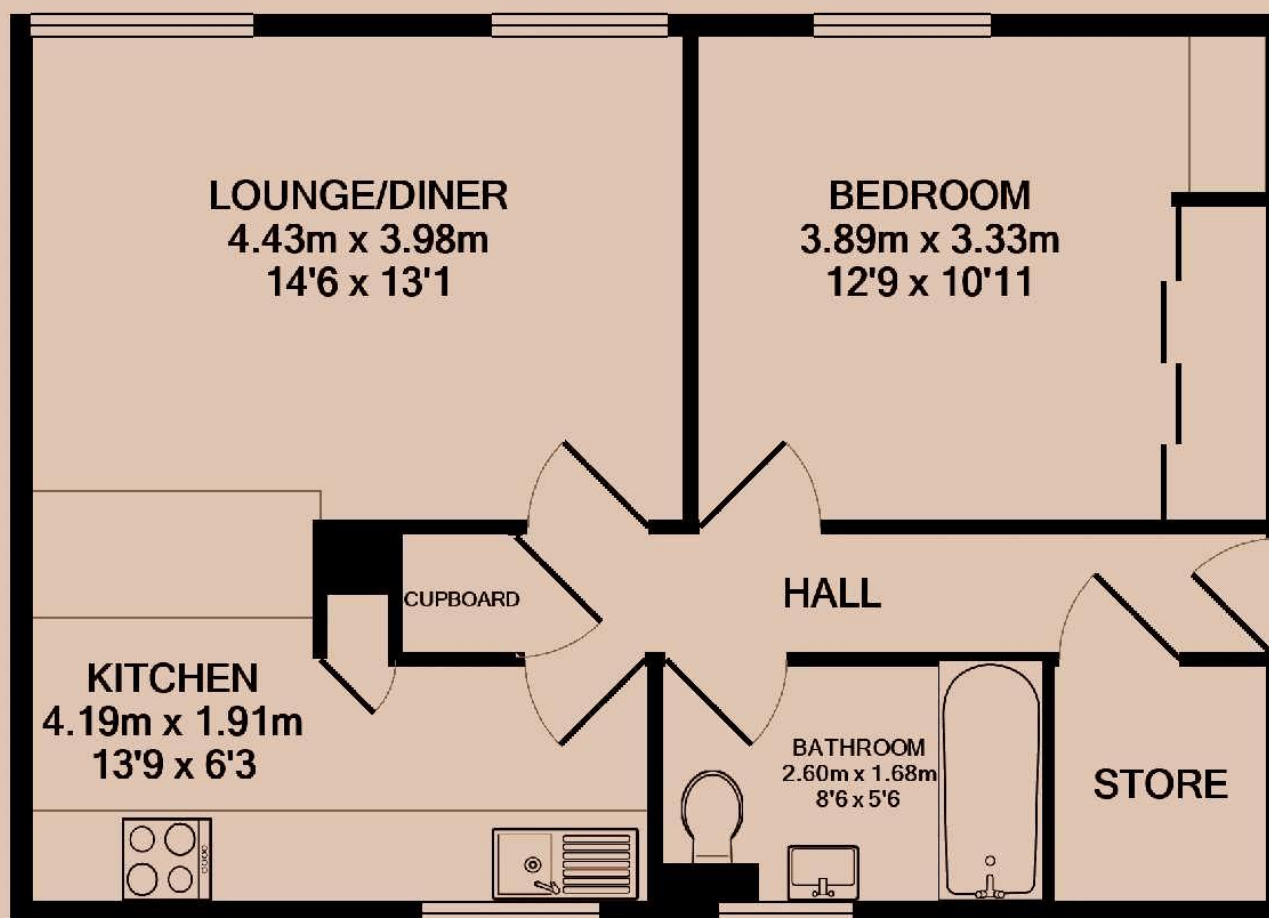
**Deposit**  
£770

**EPC**  
58 | D

**Council Tax Band**  
A

**ID**  
#16153

**Updated**  
22/05/2025





# *Have a property like this? Let's work together.*

Design and marketing are at the heart of our approach. With most people now looking for property online, we can get our clients' properties in front of as many people as the most prominent national agents. Where we differ is in the quality of our work. We create stunning digital particulars that highlight the individual attributes of every property we market, with videos and floor plans as standard.



**OUR OFFICE**  
7 Biggin Street  
Loughborough, LE11 1UA

**CONTACT US**  
01509 320 320  
let@huntleys.net

