

The image shows a modern, open-plan living space. In the foreground, there's a large, tufted brown leather sofa and a wooden coffee table with a herringbone pattern. Two green armchairs with wooden frames are positioned next to the sofa. The background features a bar area with stools and a kitchen counter. The ceiling is dark with exposed pipes and modern lighting fixtures, including pendant lights and a large hanging plant with string lights. Large windows on the right side offer a view of the outside.

The Wharf

Loughborough

2 Bed 3rd Floor Apartment • LE11 1GN • £1,375 pcm • £1,580 Deposit



The Wharf, Loughborough

Set in the highest specification development that Loughborough has to offer, in THE WHARF block, in The Waterside Village. This premium, two double-bedroom third-floor apartment is soon ready for occupation. In the developer's own words, "Residents can enjoy waterside living at its best, with free access to The Wharf's gymnasium, fitness studio, communal office space, rooftop terrace and concierge service. Each apartment comes with allocated parking space(s) and The Wharf offers easy access to Loughborough's town centre and train station. The Waterside Village offers the perfect live, work and play living experience". All photos, video tours & floor plans are of a showhome within the same block.

Lounge / Diner

Contemporary living area that is open plan to the kitchen and runs the full depth of the apartment. Featured Juliet Balcony overlooking the countryside.

Kitchen

A Pullman kitchen in charcoal with matching worktop and brick-bond tiling. Hidden away behind the smart cabinets, there are all the integrated appliances, including a fridge-freezer, dual ovens, washer-dryer, easy-clean hob and a dishwasher - open plan to the living area.

Master Bedroom

Elegant and spacious double bedroom with benefits of an ensuite shower room featuring floor-to-ceiling window. Wood effect flooring and exposed brick completes the look.

Bedroom Two

Generously proportioned second double bedroom, with dimensions almost identical to the Master bedroom.

Bathroom

This beautiful three-piece bathroom comes complete with a "rain shower" head over the bath, heated towel rail and shaving point. Classic, brick-bond tiling completes the look.

Ensuite

A three-piece en-suite shower room with a matching finish to the bathroom, heated towel rail and shaving point. Classic, brick-bond tiling completes the look.

Communal Garden

A smart and regularly maintained garden is available for the Waterside Village resident's leisure.

Rooftop Terrace

For The Wharf residents to enjoy a stunning rooftop terrace overlooking Loughborough and the countryside.

For more information about this property, visit our website [huntleys.net](https://www.huntleys.net).

Energy Performance

Score	Energy rating	Current	Potential
92+	A		
81-91	B	81 B	81 B
69-80	C		
55-68	D		
39-54	E		
21-38	F		
1-20	G		

We aim to make our particulars both accurate and reliable. However they are not guaranteed; nor do they form part of an offer or contract. If you require clarification on any points then please contact us, especially if you are traveling some distance to view. All measurements are to widest point.



Lounge / Diner



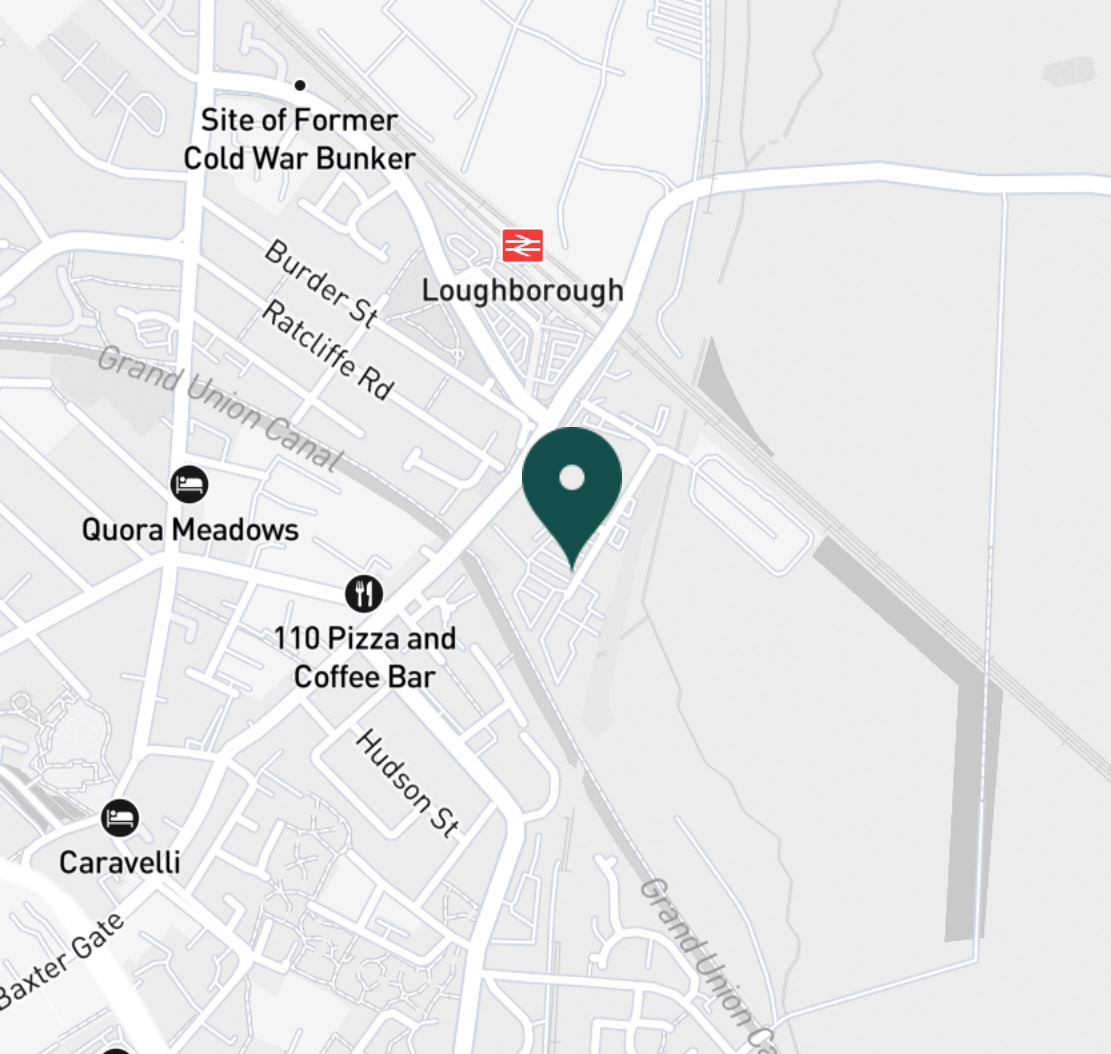
Kitchen



Kitchen



Kitchen



SUPERMARKETS

Marks & Spencer	0.7 mi
Tesco Superstore Loughborough	0.8 mi
Aldi Loughborough	1.0 mi
Lidl Loughborough	1.1 mi
Sainsburys Loughborough	1.2 mi

GYMS

CrossFit Loughborough	0.5 mi
PureGym Loughborough	0.7 mi
Anytime Fitness Loughborough	0.8 mi
Dynamite Gym Ltd	0.8 mi
NPC Performance Centre	1.0 mi

TRAIN STATIONS

Loughborough	0.3 mi
Barrow upon Soar	4.2 mi
Sileby	6.0 mi
East Midlands Parkway	10.5 mi
Syston	10.9 mi

NURSERY SCHOOLS

Cobden Childrens Centre	0.6 mi
Babblebrooke Day Nursery	0.7 mi
Lime Tree Nursery	0.9 mi
Small World Nursery	1.1 mi
Emmanuel PS	1.2 mi

PRIMARY SCHOOLS

Rendell Primary School	0.5 mi
Cobden PS	0.9 mi
Fairfield Preparatory Sch	1.0 mi
St Marys Catholic PS	1.3 mi
Loughborough Grammar Sch	1.3 mi

HIGH SCHOOLS

Limehurst Academy	0.6 mi
Loughborough Grammar Sch	1.3 mi
Our Lady's Convent Sch	1.4 mi
Loughborough High Sch	1.4 mi
RNIB College Loughborough	1.5 mi

Discover
Loughborough



- ✓ High-spec Gymnasium
- ✓ Ensuite
- ✓ Rooftop Terrace
- ✓ Allocated Parking
- ✓ Two Double Bedrooms
- ✓ Loughborough

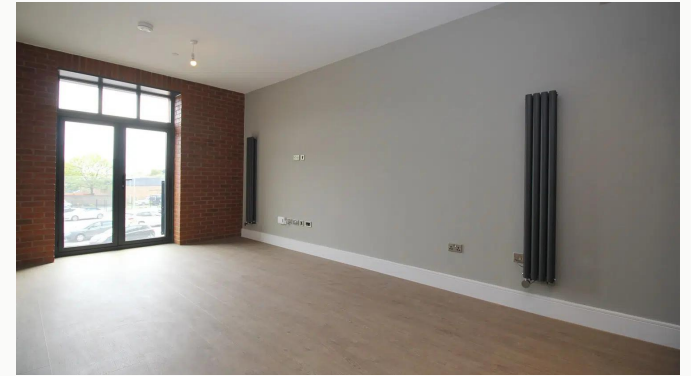




Lounge / Diner



Lounge / Diner



Lounge / Diner



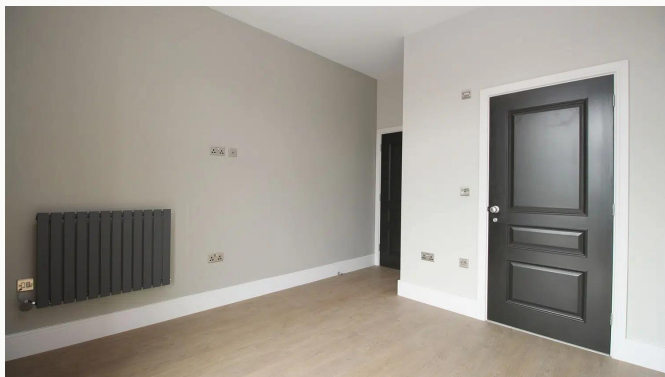
Lounge / Diner



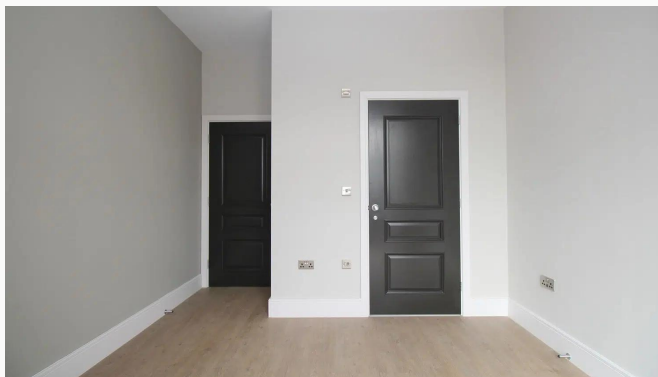
Lounge / Diner



Master Bedroom



Master Bedroom



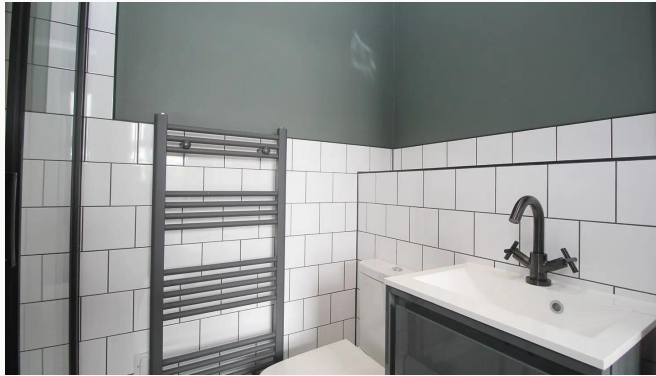
Master Bedroom



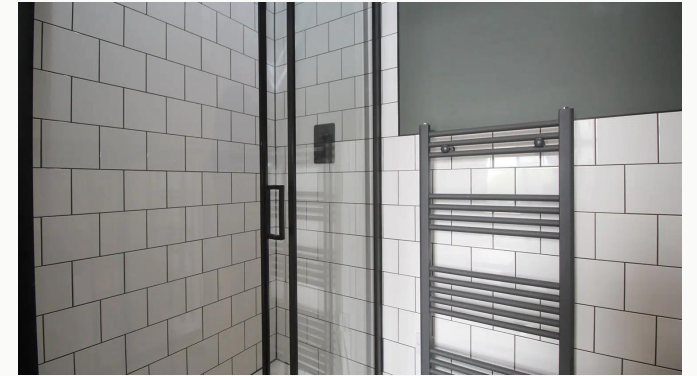
Master Bedroom



Master Bedroom



Ensuite



Ensuite



Bedroom Two



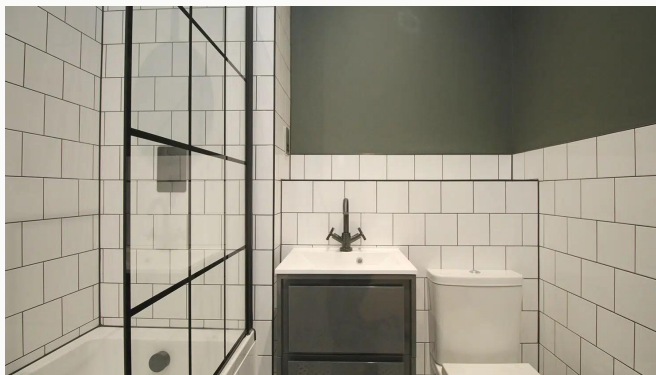
Bedroom Two



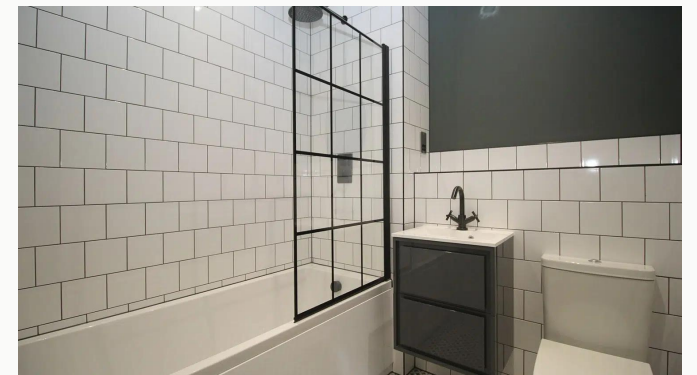
Bedroom Two



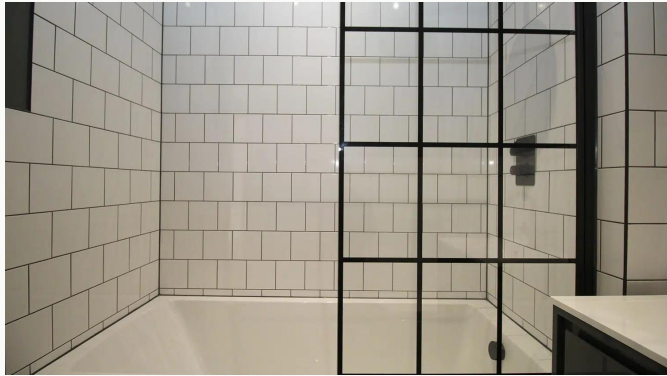
Bedroom Two



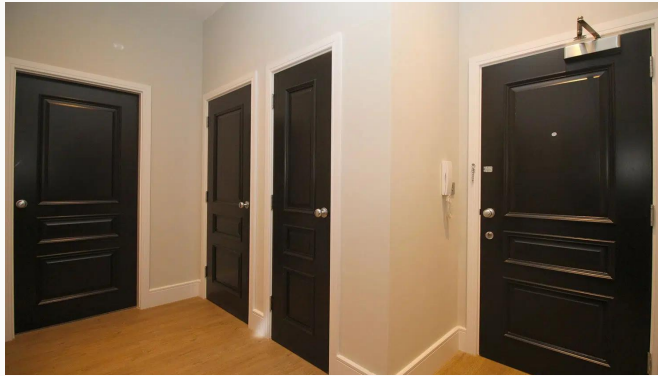
Bathroom



Bathroom



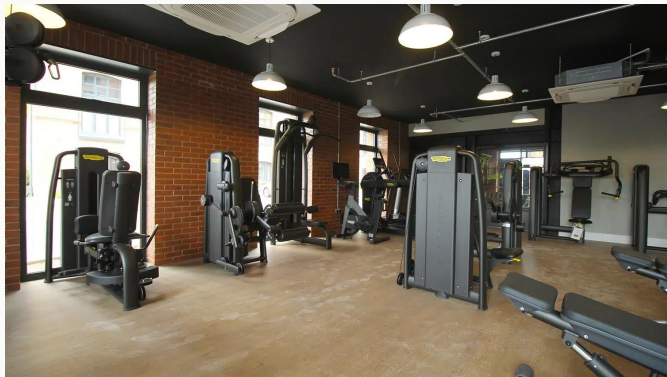
Bathroom



Hallway



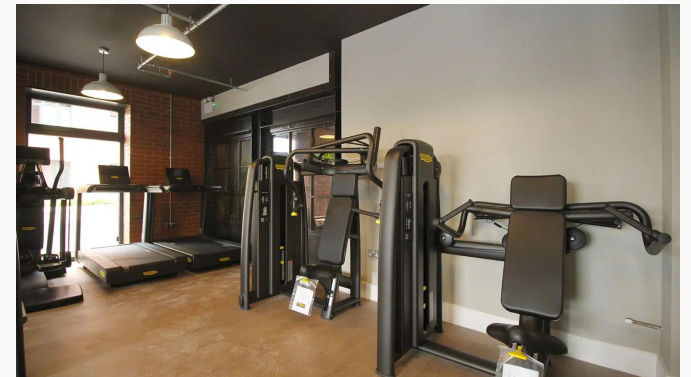
Gym



Gym



Gym



Gym



Rooftop Terrace



Rooftop Terrace



Rooftop Terrace



Rooftop Terrace



Reception



Reception



Reception



Reception



The Wharf

Available
From 20/06/2025

Comes
Unfurnished

Bedrooms
2

Receptions
1

Bathrooms
2

Parking
Allocated

Postcode
LE11 1GN

Rent
£1,375 pcm

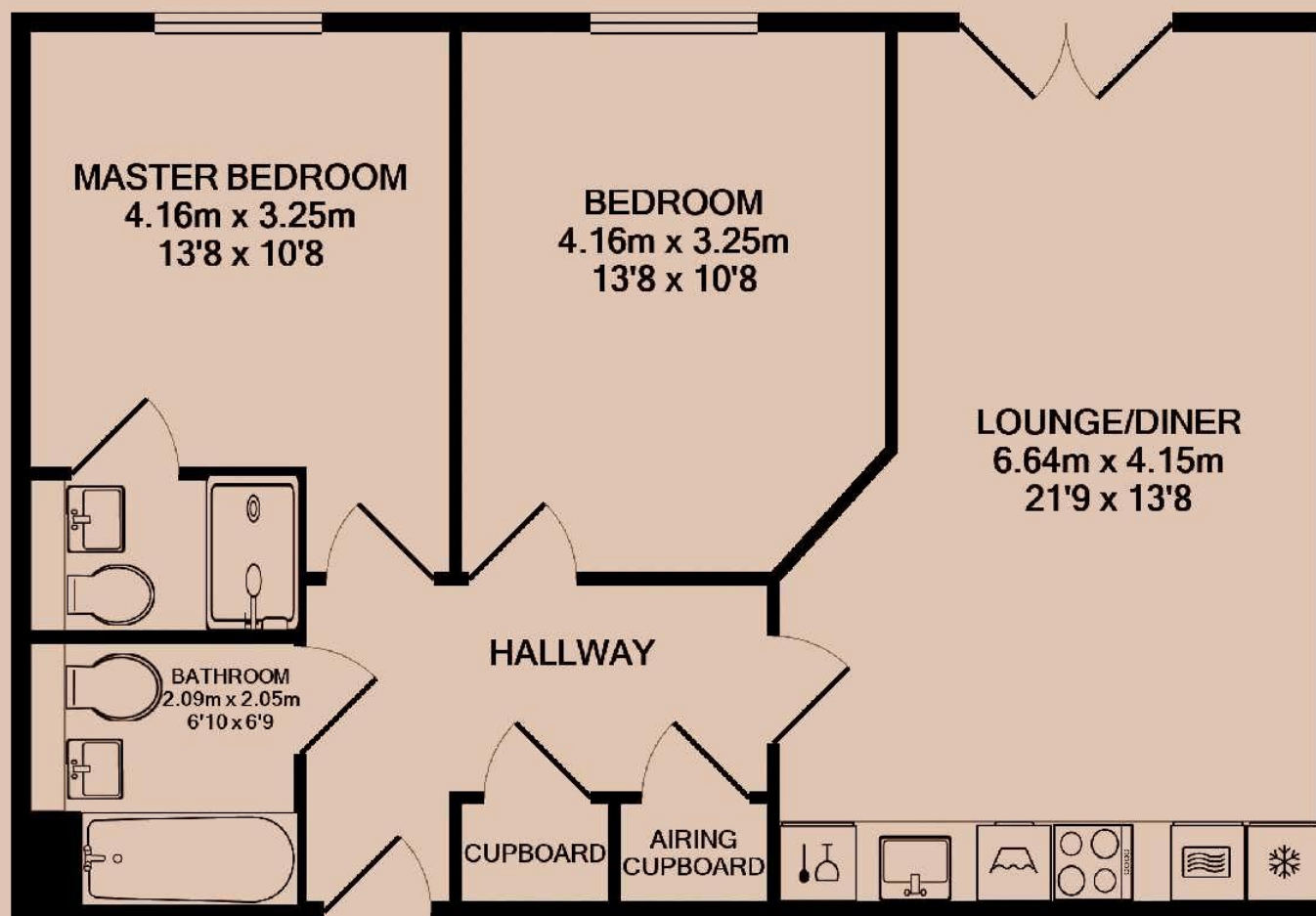
Deposit
£1,580

EPC
81 | B

Council Tax Band
B

ID
#10642

Updated
20/05/2025



Have a property like this? Let's work together.

Design and marketing are at the heart of our approach. With most people now looking for property online, we can get our clients' properties in front of as many people as the most prominent national agents. Where we differ is in the quality of our work. We create stunning digital particulars that highlight the individual attributes of every property we market, with videos and floor plans as standard.



OUR OFFICE
7 Biggin Street
Loughborough, LE11 1UA

CONTACT US
01509 320 320
let@huntleys.net

