

The image shows the interior of a terraced house. The ceiling features exposed wooden beams and a single pendant light hangs from the center. The walls are white with dark wooden vertical supports. A white brick fireplace is built into the wall on the right. The floor is made of light-colored wooden planks. A radiator is visible on the left wall.

# *Loughborough Road*

## Mountsorrel

4 Bed Terraced House • LE12 7AP • £1,000 pcm • £1,150 Deposit



# Loughborough Road, Mountsorrel

A beautiful terraced, four double bedroom, character property available to let in Mountsorrel. This large house comes unfurnished and is soon ready for occupancy. On the ground floor is a large lounge, kitchen, spacious entrance hall and water closet. Set on the first floor is four double bedrooms and bathroom. This property includes a private yard to the rear with on street parking available.

## Lounge 6.36m (20'10) x 3.46m (11'4)

The largest room in the house. A multi-purpose, reception room. Exposed beams and wooden flooring complete the look.

## Kitchen 3.46m (11'4) x 2.63m (8'8)

A country style kitchen set to the rear of the property on the ground floor. This kitchen has space for multiple appliances.

## Master Bedroom 4.2m (13'9) x 4.12m (13'6)

The largest bedroom in the house. This double bedroom overlooks Loughborough Road. Exposed beams, decorative fireplace and wooden flooring complete the look.

## Bedroom Two 3.79m (12'5) x 3.5m (11'6)

A second double bedroom situated to the rear of the property, with similar dimensions to that of the Master Bedroom.

## Bedroom Three 3.5m (11'6) x 2.68m (8'10)

A third double bedroom with similar decor to the other bedrooms.

## Bedroom Four 4.32m (14'2) x 3.03m (9'11)

A fourth double bedroom set to the rear of the property.

## Bathroom 2.7m (8'10) x 1.79m (5'10)

A three piece bathroom on the first floor. Includes a bath, sink, toilet and shower above the bath.

## Water Closet 2.32m (7'7) x 1.01m (3'4)

A practical downstairs toilet including both sink and toilet.

## Second Floor

A second set of stairs will give access to a second landing. Can be used as additional storage.

## Garden

A quaint yard set at the rear of the property.

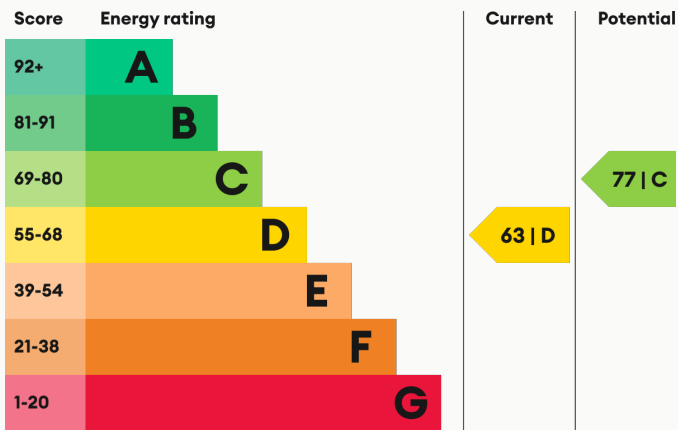
## Parking

On street parking available on Loughborough Road and nearby streets.

## Heating

Gas-fired central heating.

## Energy Performance



We aim to make our particulars both accurate and reliable. However they are not guaranteed; nor do they form part of an offer or contract. If you require clarification on any points then please contact us, especially if you are traveling some distance to view. All measurements are to widest point.





Lounge



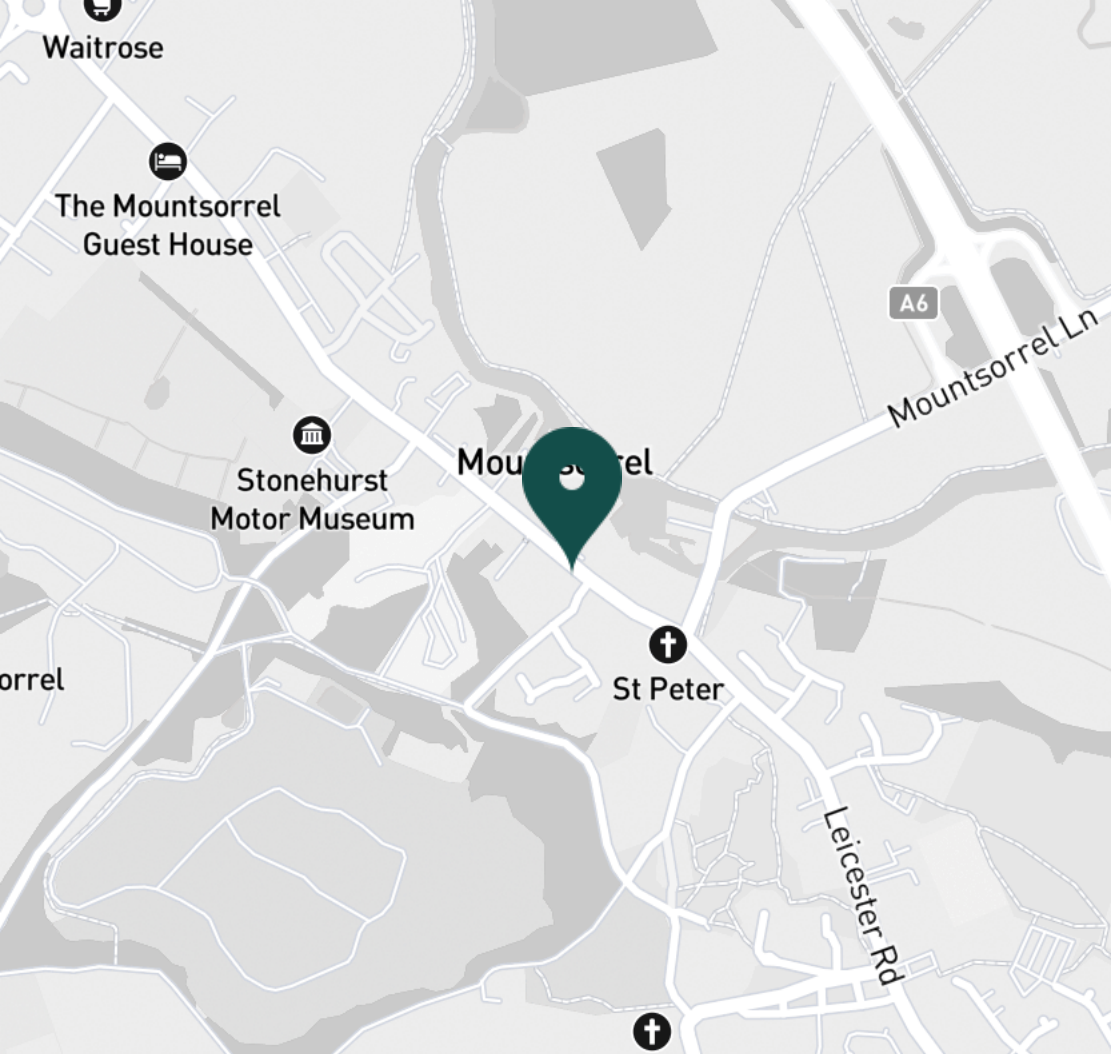
Lounge



Lounge



Lounge



#### SUPERMARKETS

Waitrose Mountsorrel	0.8 mi
Co-op Food Quorn	1.7 mi
Co-op Food Barrow Upon Soar	2.6 mi
Tesco Extra Loughborough	4.3 mi
Co-op Food Birstall	4.9 mi

#### GYMS

Onestep fitness	0.6 mi
bofitness	0.9 mi
Soar Valley Leisure Centre	0.9 mi
Quorn Grange Hotel	1.4 mi
Rosemary Conley Fitness Club	1.6 mi

#### TRAIN STATIONS

Sileby	1.6 mi
Barrow upon Soar	2.7 mi
Loughborough	5.4 mi
Syston	6.1 mi
South Wigston	7.0 mi

#### NURSERY SCHOOLS

Castle View Day Nursery	0.2 mi
Rothley Park Kindergarten	1.0 mi
Quorn Grange Day Nursey	1.5 mi
Quorn Nursery School	1.6 mi
Sileby Littlestars PS	1.6 mi

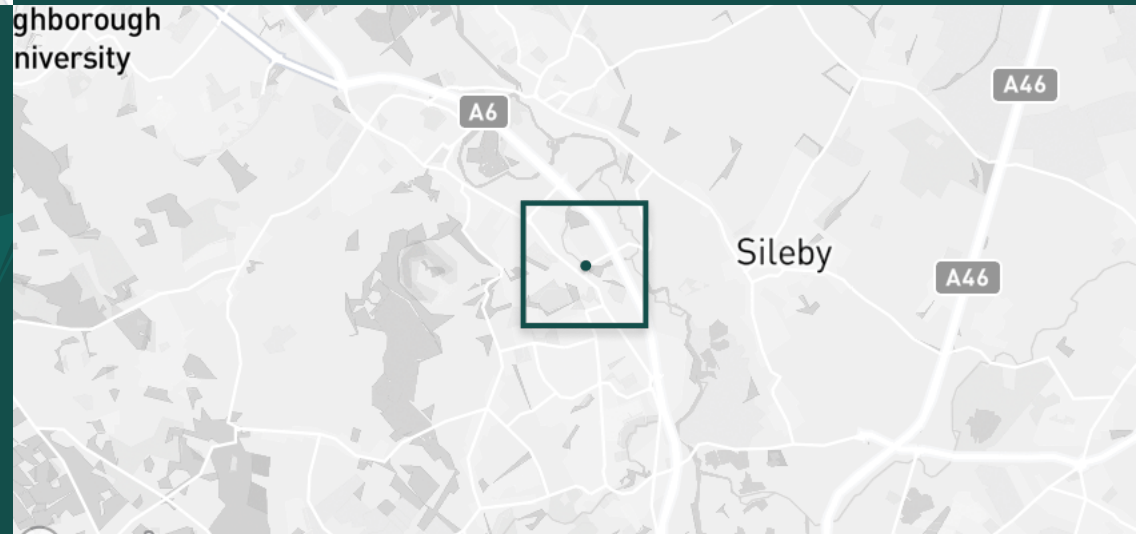
#### PRIMARY SCHOOLS

Christ Church & St Peters CE	0.6 mi
Redlands Community PS	1.8 mi
St Bartholomew's CE PS	2.1 mi
Highcliffe PS	2.3 mi
Highcliffe PS	2.3 mi

#### HIGH SCHOOLS

Rawlins Academy	1.6 mi
Humphrey Perkins High Sch	3.0 mi
Ratcliffe College	3.4 mi
Loughborough Grammar Sch	4.4 mi
Loughborough High Sch	4.5 mi

Discover  
*Mountsorrel*





- ✓ Available Soon
- ✓ Character Property
- ✓ Four Double Bedrooms
- ✓ Downstairs Toilet
- ✓ Mountsorrel Village
- ✓ Large House







Kitchen



Kitchen



Master Bedroom



Master Bedroom



Master Bedroom



Bedroom Two



Bedroom Two



Bedroom Two



Bedroom Two





Bedroom Three



Bedroom Three



Bedroom Three



Bedroom Three



Bedroom Four



Bedroom Four



Bedroom Four

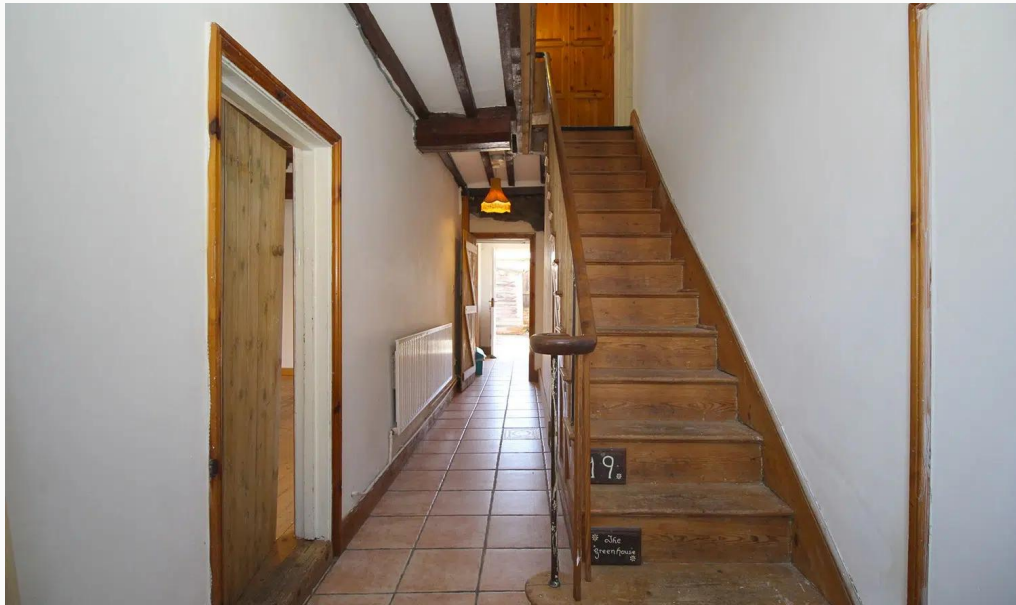


Bathroom



Water Closet





Hallway



Landing



Garden




Garden

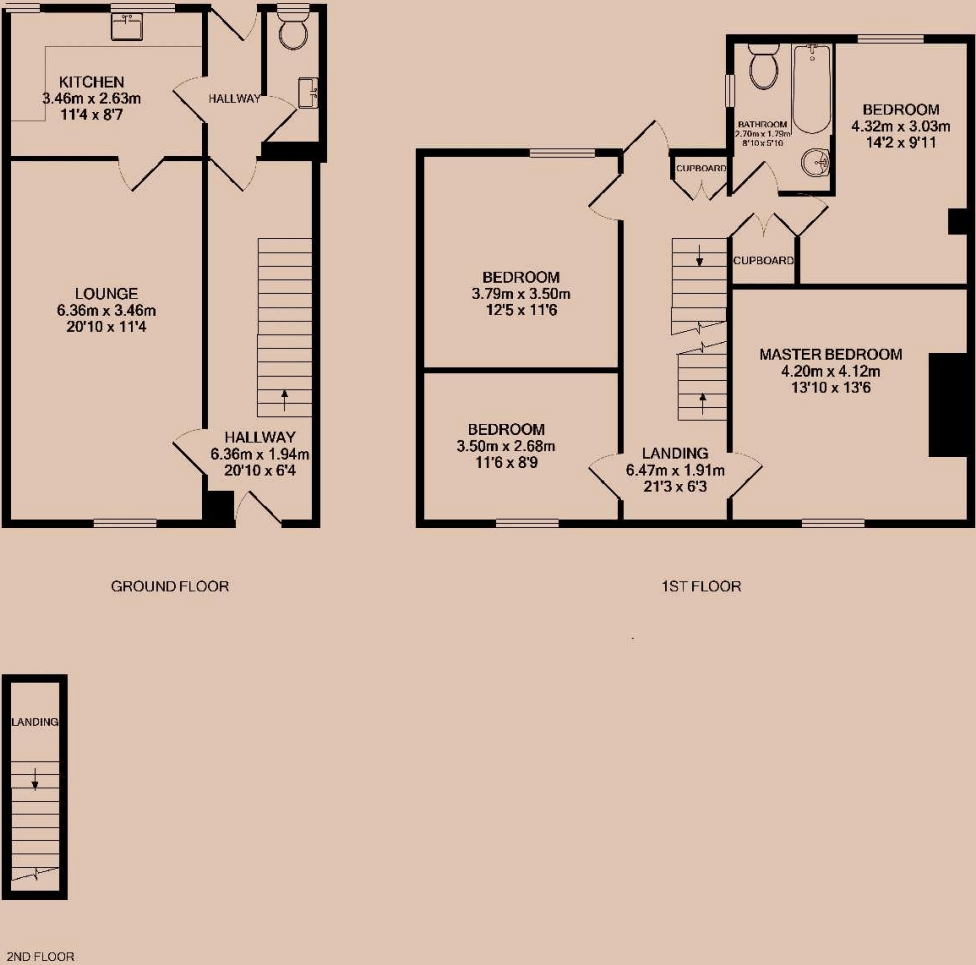




Loughborough Road



<b>Available</b> From 10/06/2025	<b>Comes</b> Unfurnished	<b>Bedrooms</b> 4	<b>Receptions</b> 1	<b>Bathrooms</b> 1	<b>Parking</b> On Street	<b>Postcode</b> LE12 7AP	
<b>Rent</b> £1,000 pcm	<b>Deposit</b> £1,150	<b>EPC</b> 63   D	<b>Council Tax Band</b> B	<b>ID</b> #10247	<b>Updated</b> 15/05/2025		





# *Have a property like this? Let's work together.*

Design and marketing are at the heart of our approach. With most people now looking for property online, we can get our clients' properties in front of as many people as the most prominent national agents. Where we differ is in the quality of our work. We create stunning digital particulars that highlight the individual attributes of every property we market, with videos and floor plans as standard.



**OUR OFFICE**  
7 Biggin Street  
Loughborough, LE11 1UA

**CONTACT US**  
01509 320 320  
let@huntleys.net

