

16

The Gate
Loughborough

16



2 Bed 1st Floor Apartment • LE11 1GJ • £1,300 pcm • £1,500 Deposit



The Gate, Loughborough

Set in the highest specification development that Loughborough has to offer. This premium, two double bedroom first-floor apartment is soon ready for occupation. In the developers own words "The Gate offers a prestigious collection of luxury apartments with residents gym, residents swimming pool, communal 'hot desk' area and meeting room, parking, daily concierge service. This new 'Waterside Village' offers the perfect live, work and play living experience". All photos are of actual property. Virtual tour available now.

Living Room 6.4m (21') x 4.2m (13'9)

Contemporary living area that is open plan to the kitchen and runs the full depth of the apartment. Featured floor-to-ceiling window, USB equipped PowerPoints and underfloor heating.

Kitchen 1m (3'3) x 4.2m (13'9)

A Pullman kitchen in charcoal with matching worktop and brick-bond tiling. Hidden away behind the smart cabinets there are all the integrated appliances including a fridge-freezer, dual ovens, washer-dryer, easy-clean hob and a dishwasher. Open plan to the living area.

Master Bedroom 4.84m (15'11) x 3.16m (10'4)

Elegant and spacious bedroom with benefits of an en-suite shower room featured floor-to-ceiling window, USB equipped PowerPoints and underfloor heating.

Ensuite 2m (6'7) x 1.2m (3'11)

A three-piece en-suite shower room with a matching finish to the bathroom, heated towel rail and shaving point. Classic, brick-bond tiling completes the look.

Bedroom Two 4.84m (15'11) x 3.02m (9'11)

Generously proportioned, with dimensions almost identical to the Master bedroom, featured floor-to-ceiling window, USB equipped PowerPoints and underfloor heating.

Bathroom 2.12m (6'11) x 2m (6'7)

This beautiful three-piece bathroom comes complete with a "rain shower" head over the bath, heated towel rail and shaving point. Classic, brick-bond tiling completes the look.

Communal Garden

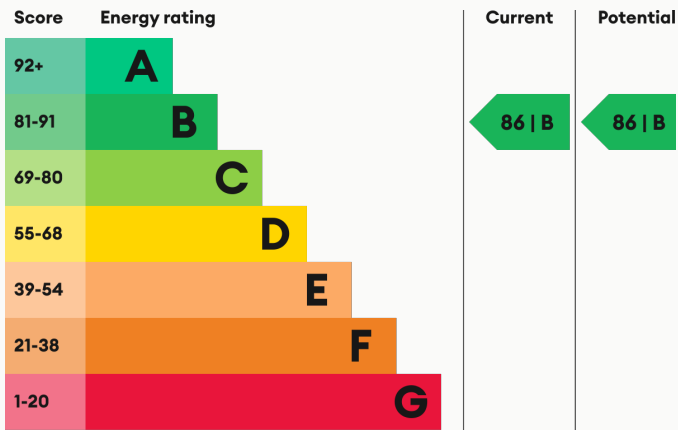
A smart and regularly maintained garden is available for the Waterside Village residents leisure.

Parking

One allocated bay to the front of the property with further visitors spaces available.

For more information about this property, visit our website [huntleys.net](https://www.huntleys.net).

Energy Performance



We aim to make our particulars both accurate and reliable. However they are not guaranteed; nor do they form part of an offer or contract. If you require clarification on any points then please contact us, especially if you are traveling some distance to view. All measurements are to widest point.



Kitchen



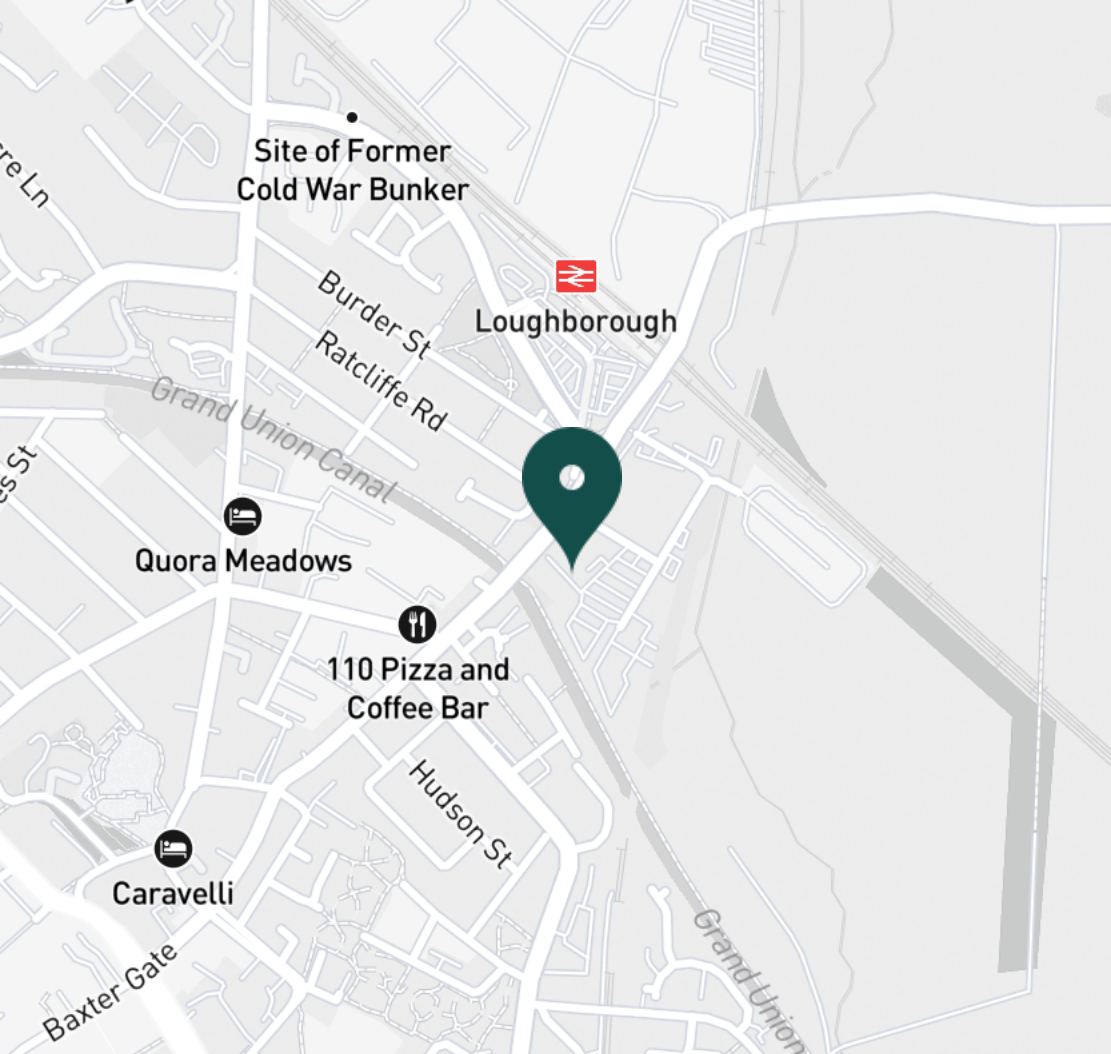
Kitchen Appliances



Kitchen



Kitchen



SUPERMARKETS

Tesco Superstore Loughborough	0.9 mi
Marks & Spencer	1.0 mi
Aldi Loughborough	1.0 mi
Lidl Loughborough	1.1 mi
Sainsburys Loughborough	1.2 mi

GYMS

CrossFit Loughborough	0.5 mi
PureGym Loughborough	0.7 mi
Anytime Fitness Loughborough	0.8 mi
Dynamite Gym Ltd	0.8 mi
NPC Performance Centre	1.0 mi

TRAIN STATIONS

Loughborough	0.4 mi
Barrow upon Soar	5.3 mi
Sileby	6.0 mi
Syston	10.3 mi
East Midlands Parkway	10.5 mi

NURSERY SCHOOLS

Cobden Childrens Centre	0.6 mi
Babblebrooke Day Nursery	0.7 mi
Lime Tree Nursery	0.9 mi
Small World Nursery	1.1 mi
Emmanuel PS	1.2 mi

PRIMARY SCHOOLS

Rendell Primary School	0.5 mi
Cobden PS	0.8 mi
Fairfield Preparatory Sch	1.0 mi
St Marys Catholic PS	1.3 mi
Loughborough Grammar Sch	1.4 mi

HIGH SCHOOLS

Limehurst Academy	0.6 mi
Loughborough Grammar Sch	1.4 mi
Our Lady's Convent Sch	1.4 mi
Loughborough High Sch	1.4 mi
RNIB College Loughborough	1.5 mi

Discover
Loughborough

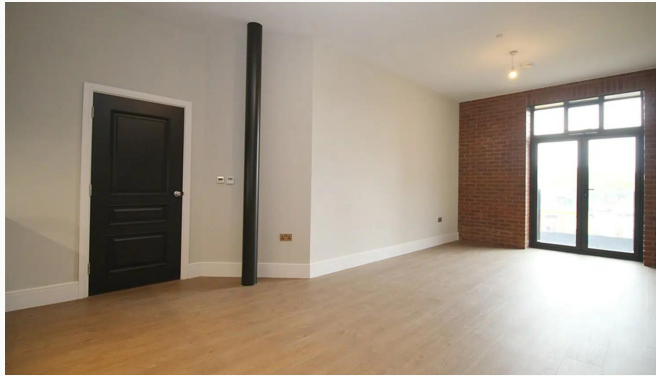


- ✓ Communal Swimming Pool
- ✓ Communal Gym
- ✓ Communal Offices
- ✓ Concierge
- ✓ Underfloor Heating
- ✓ Close to Rail Links





Living Area



Living Area



Living Area / Kitchen



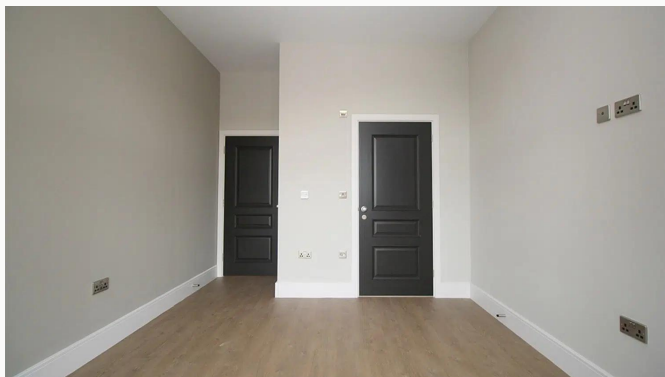
Master Bedroom



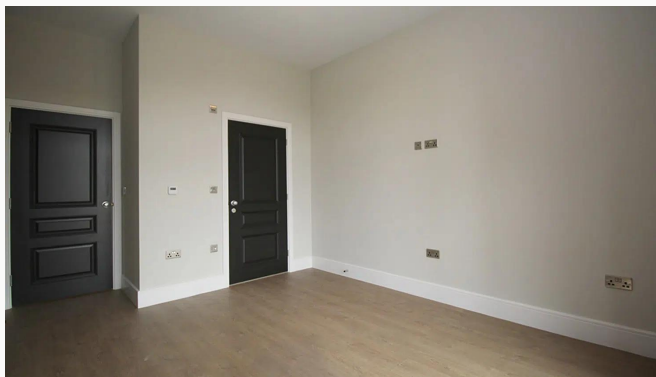
Master Bedroom



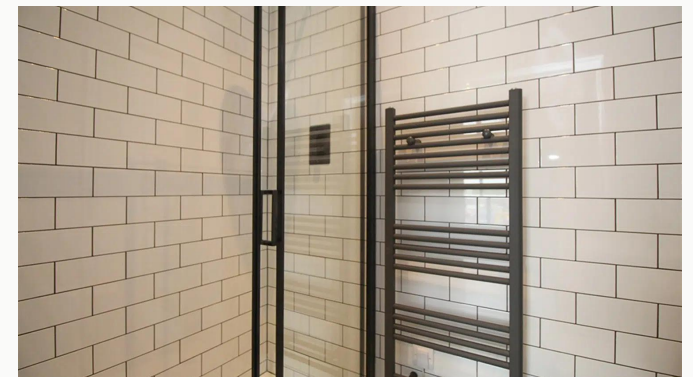
Master Bedroom



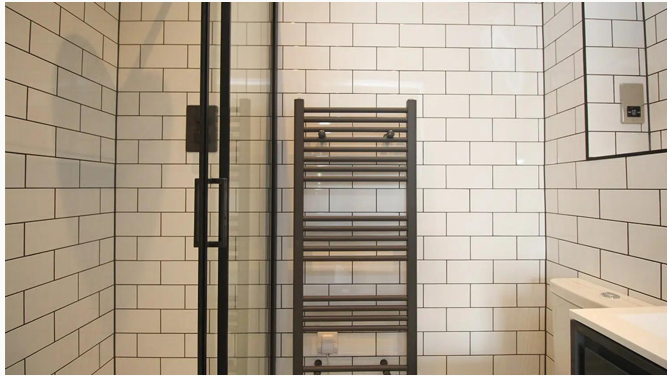
Master Bedroom



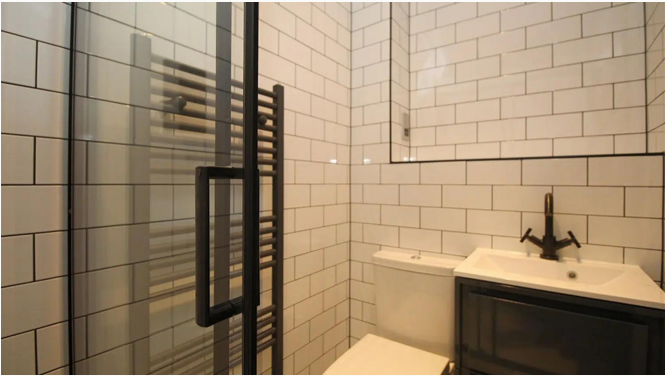
Master Bedroom



Ensuite Shower Room



Ensuite Shower Room



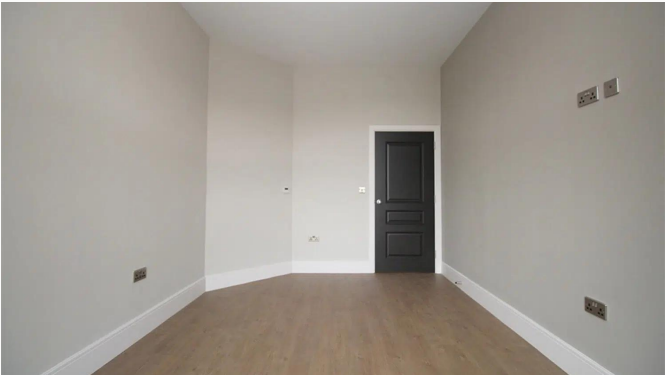
Ensuite Shower Room



Bedroom Two



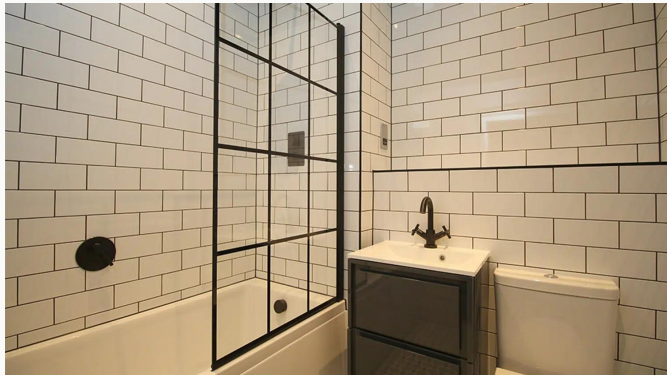
Bedroom Two



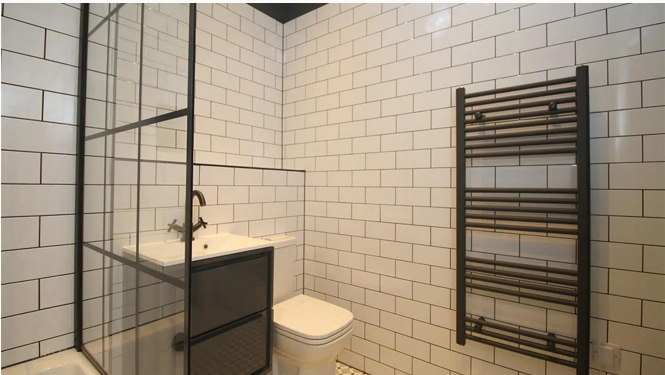
Bedroom Two



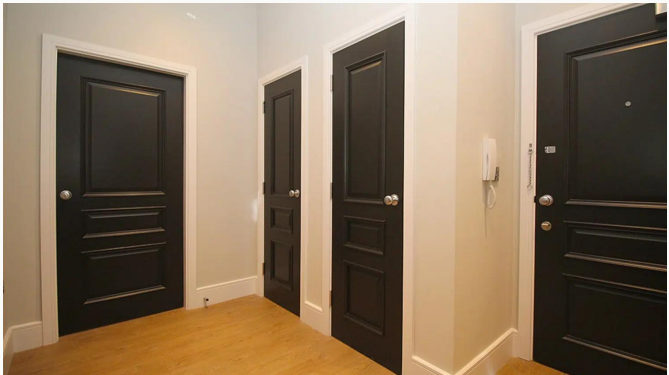
Bedroom Two



Bathroom



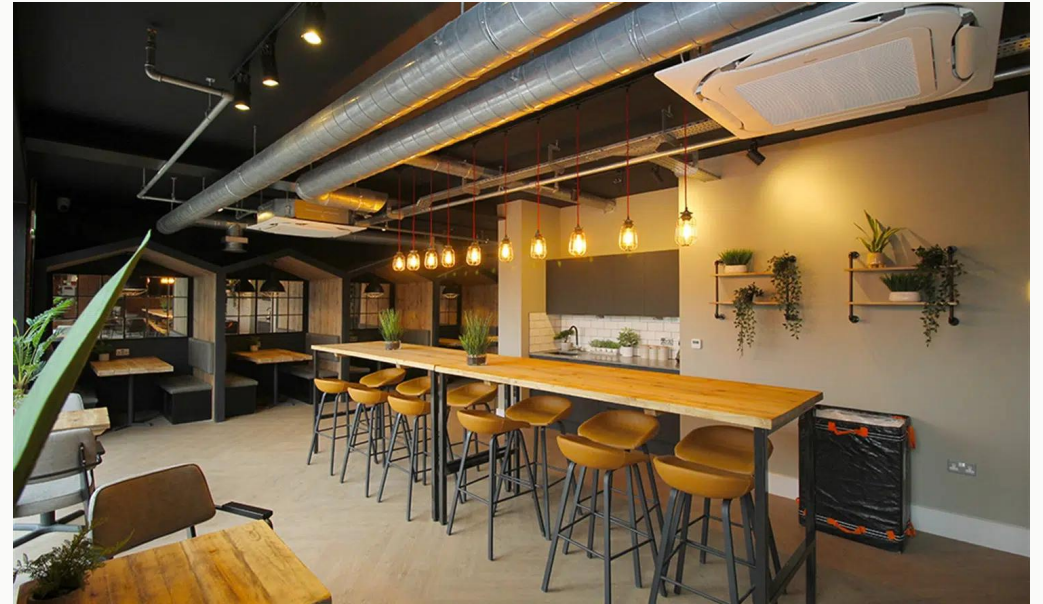
Bathroom



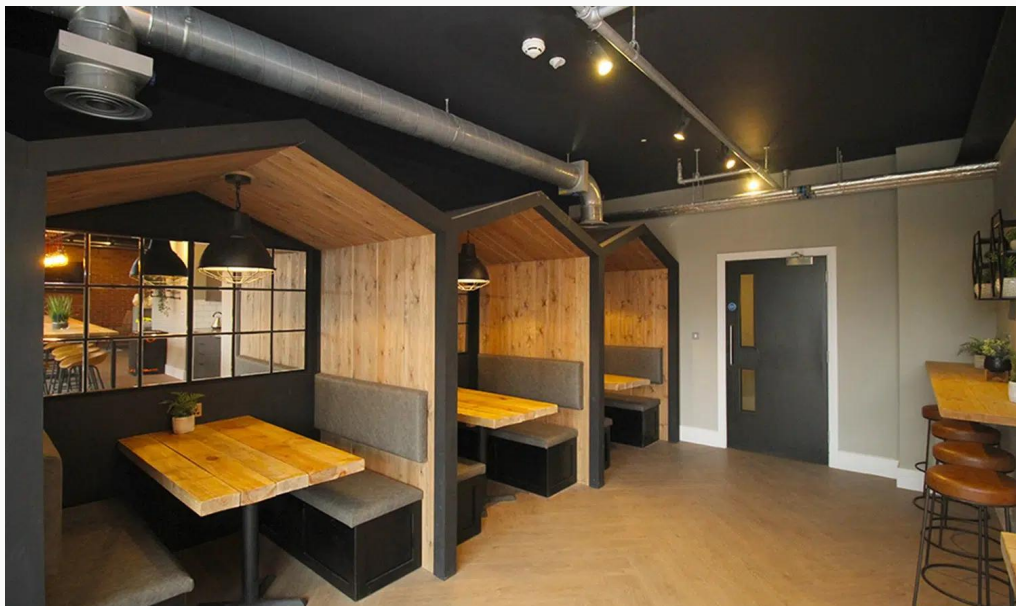
Hallway



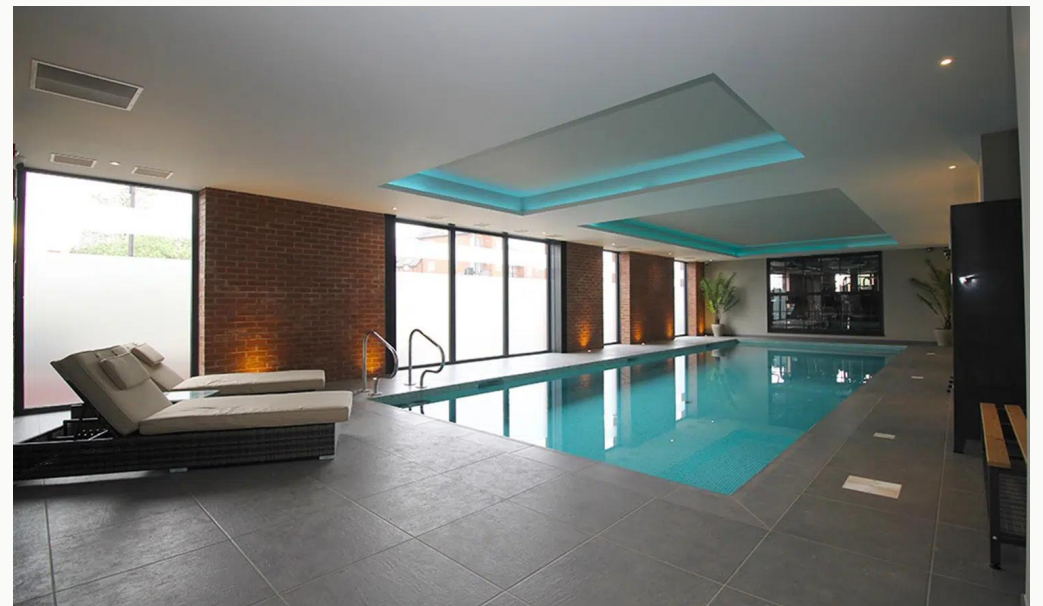
First Floor Corridor



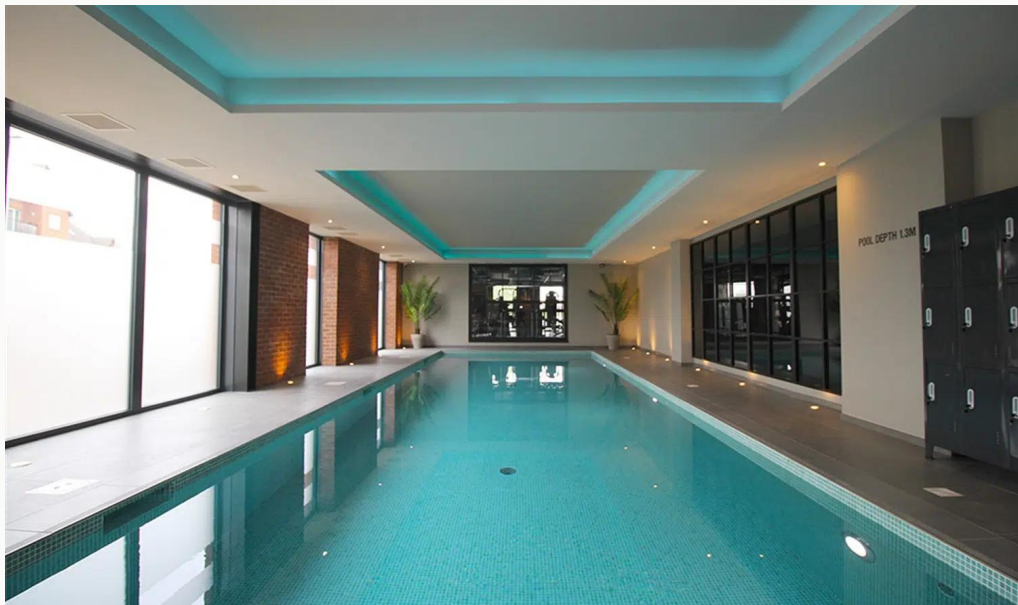
Communal Office Area



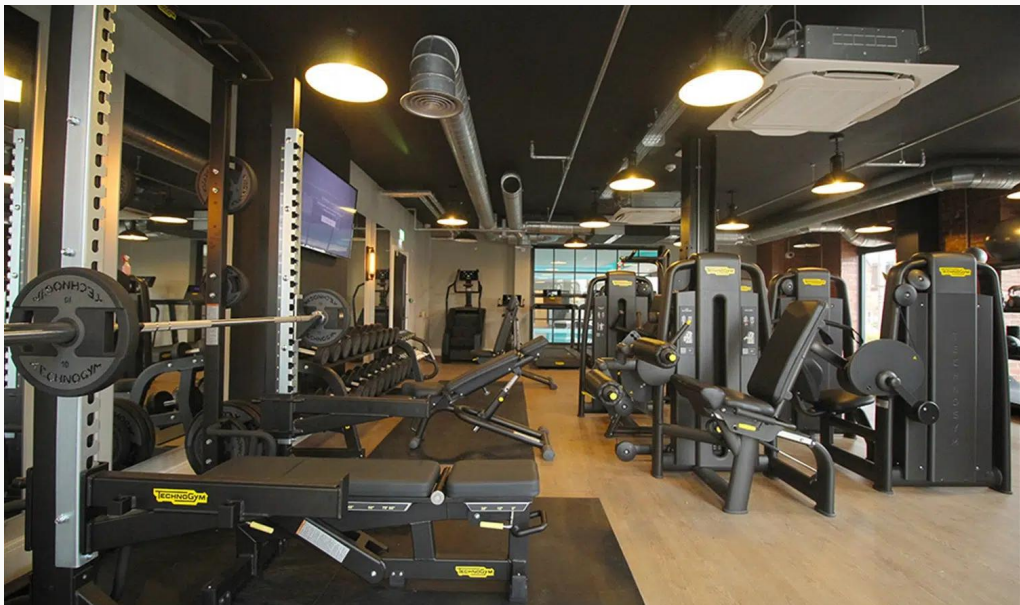
Communal Office Area



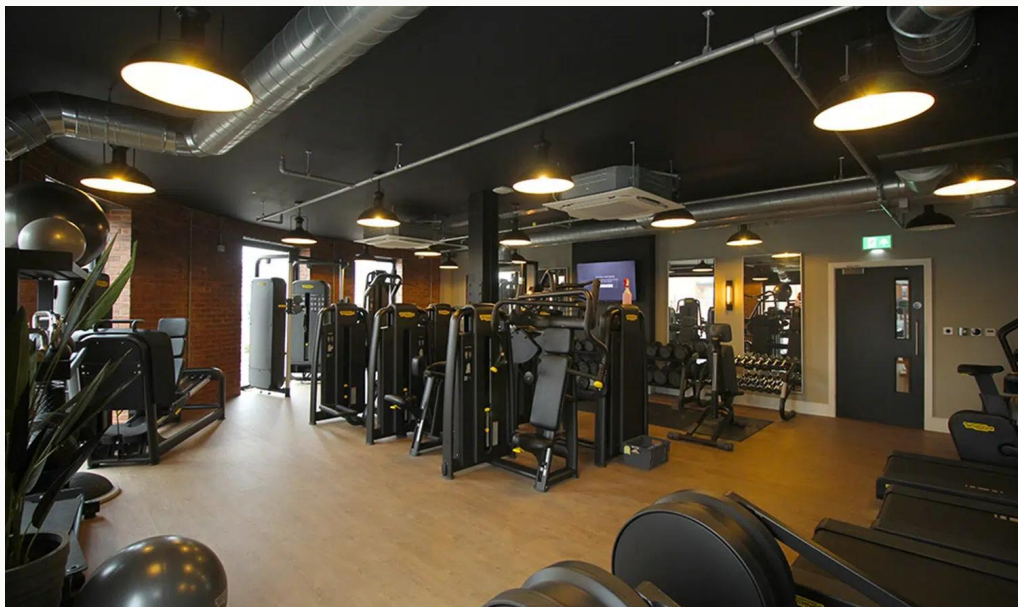
Communal Swimming Pool



Communal Swimming Pool



Communal Gym



Communal Gym



The Gate Waterside Village

Available
From 20/06/2025

Comes
Unfurnished

Bedrooms
2

Receptions
1

Bathrooms
2

Parking
Allocated

Postcode
LE11 1GJ

Rent
£1,300 pcm

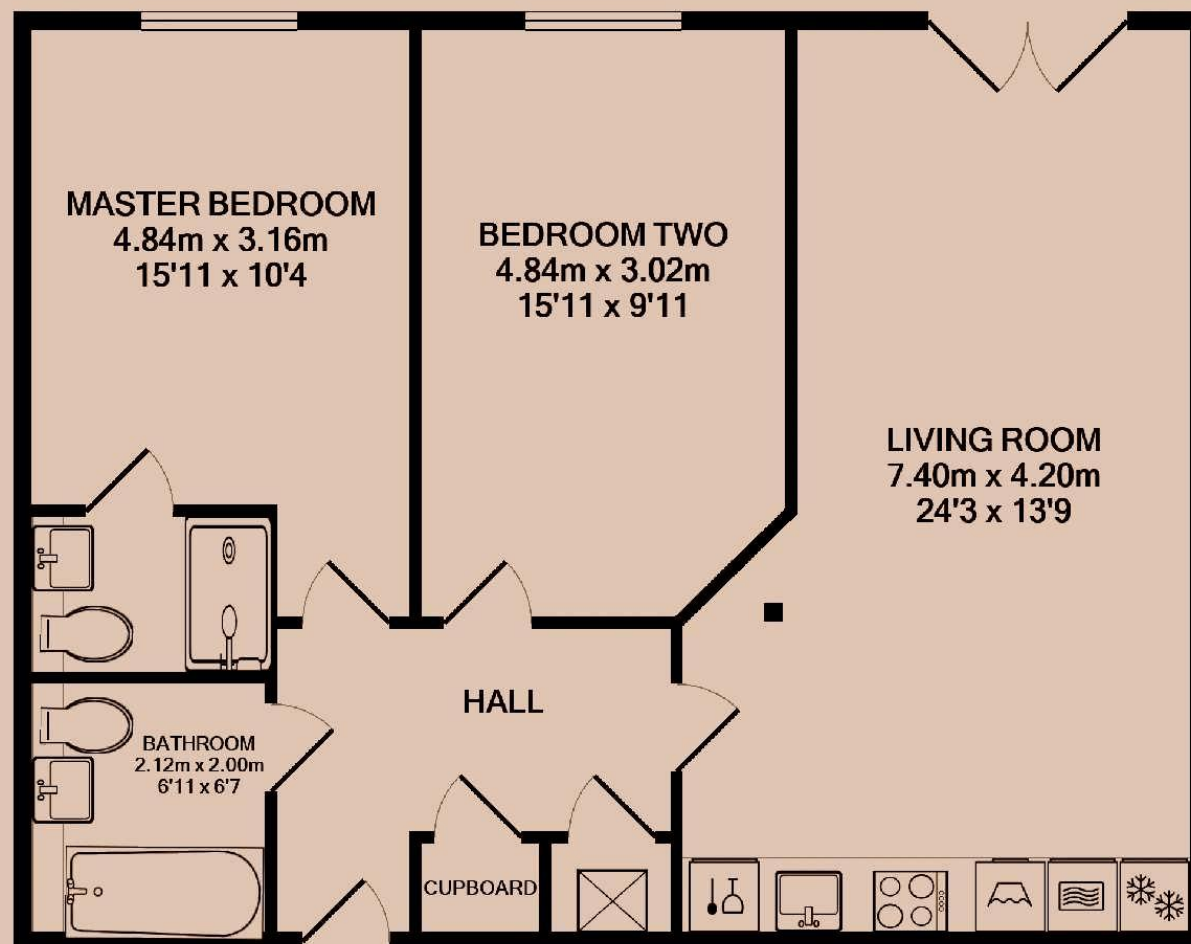
Deposit
£1,500

EPC
86 | B

Council Tax Band
B

ID
#8094

Updated
30/05/2025



Have a property like this? Let's work together.

Design and marketing are at the heart of our approach. With most people now looking for property online, we can get our clients' properties in front of as many people as the most prominent national agents. Where we differ is in the quality of our work. We create stunning digital particulars that highlight the individual attributes of every property we market, with videos and floor plans as standard.



OUR OFFICE
7 Biggin Street
Loughborough, LE11 1UA

CONTACT US
01509 320 320
let@huntleys.net

