

The image shows a modern, empty apartment interior. On the left is a kitchen with dark grey cabinets, a white subway tile backsplash, a stainless steel range hood, and a built-in oven. A track lighting system is mounted on the ceiling. In the center is a black door. To the right is a living area with a light grey wall, a white baseboard, and a black vertical pipe. Several electrical outlets and switches are visible on the wall. The floor is covered in light-colored wood-look laminate.

The Gate

Loughborough

1 Bed 3rd Floor Apartment • LE11 1GJ • £1,150 pcm • £1,320 Deposit



The Gate, Loughborough

Set in the highest specification development that Loughborough has to offer. This premium, third-floor apartment is ready for occupation. In the developers own words "The Gate offers a prestigious collection of luxury apartments with residents gym, residents swimming pool, communal 'hot desk' area and meeting room, parking, daily concierge service. This new 'Waterside Village' offers the perfect live, work and play living experience". PLEASE NOTE: photos and video tour are of similar property in the same block.

Lounge / Diner

Contemporary living and dining area that is open plan to the kitchen and runs the full depth of the apartment. Featured floor-to-ceiling window, USB equipped PowerPoints and underfloor heating.

Kitchen

A contemporary kitchen in charcoal with matching worktop and brick-bond tiling. Hidden away behind the smart cabinets there are all the integrated appliances including a fridge-freezer, fan assisted oven, washer-dryer, easy-clean hob and a dishwasher. Open plan to the living area.

Bedroom

Elegant and spacious bedroom with benefits of featured floor-to-ceiling window, USB equipped PowerPoints and underfloor heating.

Bathroom

This beautiful four-piece bathroom comes complete with a separate shower, heated towel rail and shaving point. Classic, brick-bond tiling completes the look.

Swimming Pool

A communal swimming pool, available for use for The Gate residents only.

Parking

One allocated bay within the complex car park with further visitor spaces available.

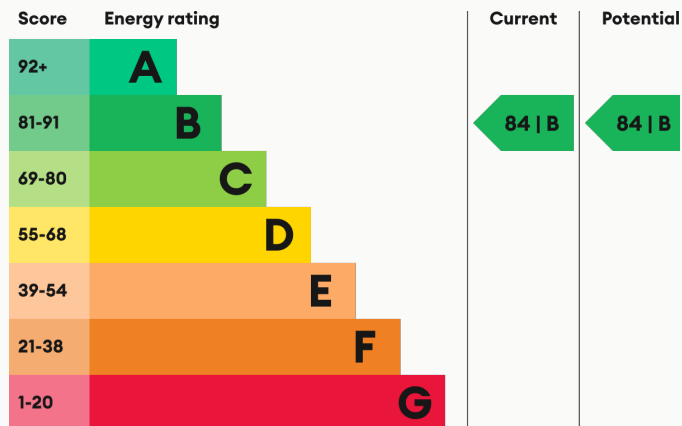
Underfloor Heating

Underfloor, central heating throughout.

Glazing

Modern, good quality, uPVC double glazing.

Energy Performance



We aim to make our particulars both accurate and reliable. However they are not guaranteed; nor do they form part of an offer or contract. If you require clarification on any points then please contact us, especially if you are traveling some distance to view. All measurements are to widest point.



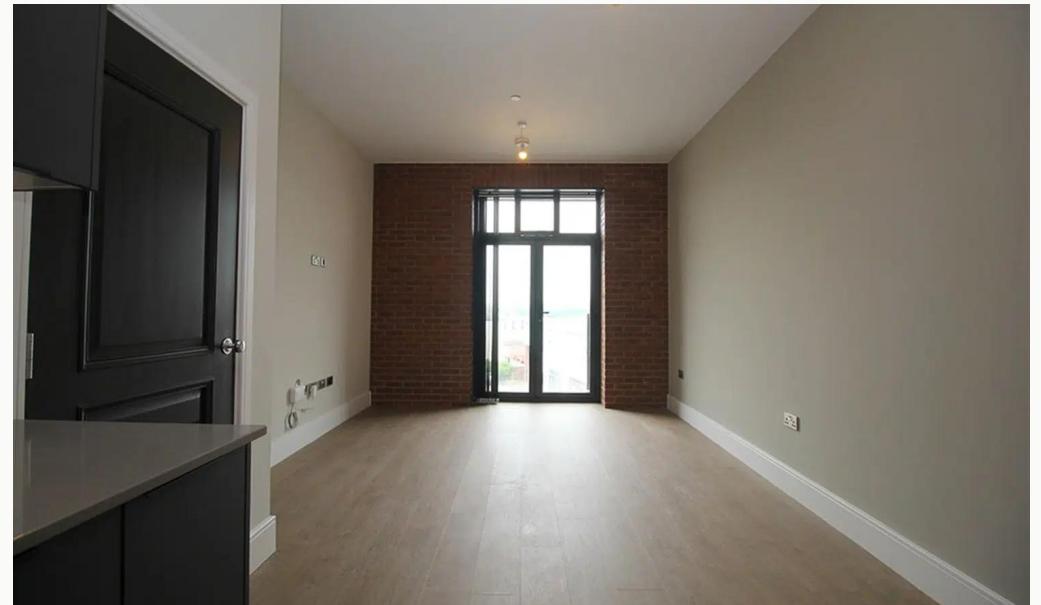
Lounge / Kitchen



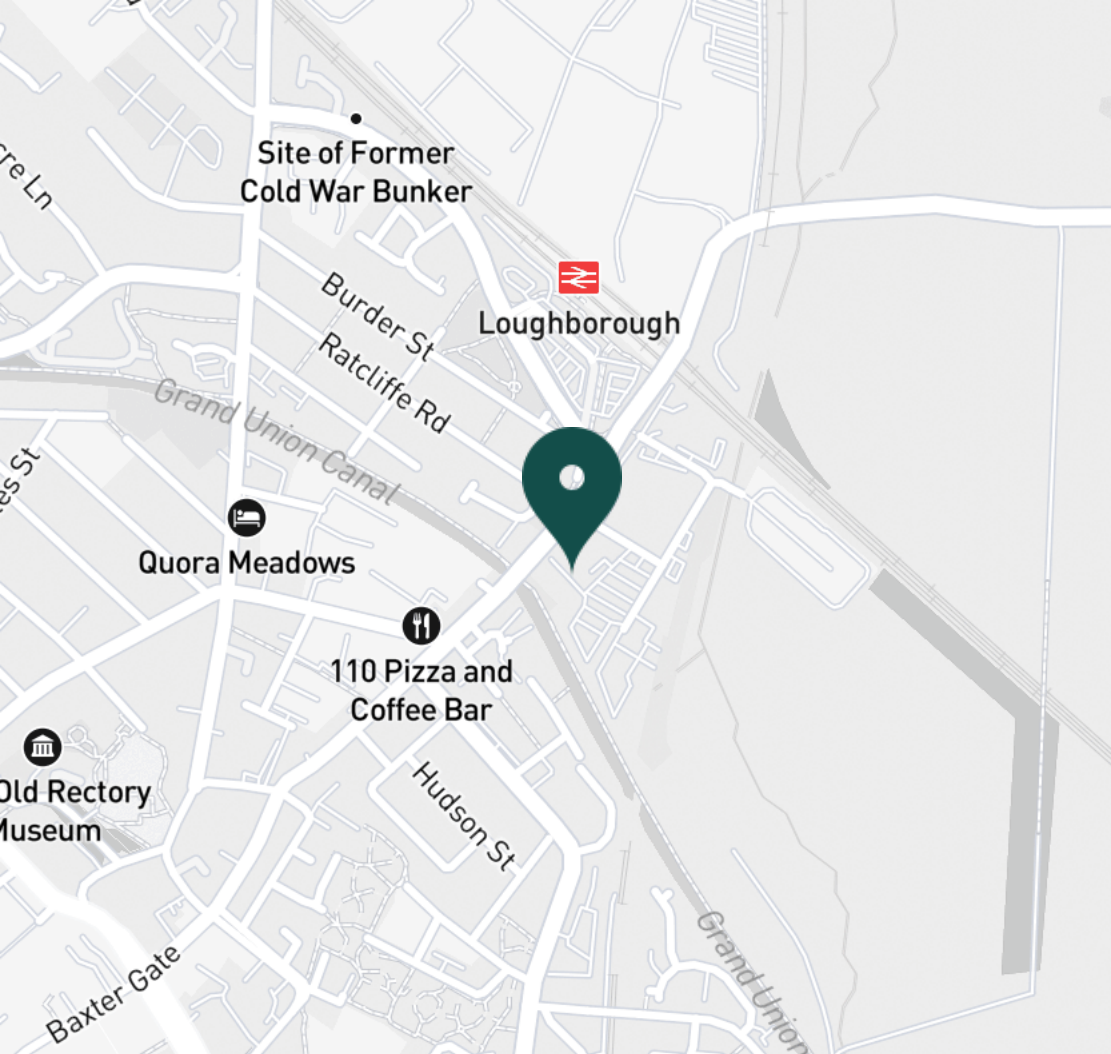
Lounge / Kitchen



Lounge



Lounge



SUPERMARKETS

Tesco Superstore Loughborough	0.9 mi
Marks & Spencer	1.0 mi
Aldi Loughborough	1.1 mi
Lidl Loughborough	1.1 mi
Sainsburys Loughborough	1.2 mi

GYMS

CrossFit Loughborough	0.5 mi
PureGym Loughborough	0.7 mi
Anytime Fitness Loughborough	0.8 mi
Dynamite Gym Ltd	0.8 mi
NPC Performance Centre	1.0 mi

TRAIN STATIONS

Loughborough	0.4 mi
Barrow upon Soar	3.9 mi
Sileby	6.0 mi
Syston	10.3 mi
East Midlands Parkway	10.5 mi

NURSERY SCHOOLS

Cobden Childrens Centre	0.6 mi
Babblebrooke Day Nursery	0.7 mi
Lime Tree Nursery	0.9 mi
Small World Nursery	1.1 mi
Busy Bees in Loughborough	1.2 mi

PRIMARY SCHOOLS

Rendell Primary School	0.5 mi
Cobden PS	0.9 mi
Fairfield Preparatory Sch	1.0 mi
St Marys Catholic PS	1.2 mi
Loughborough Grammar Sch	1.4 mi

HIGH SCHOOLS

Limehurst Academy	0.6 mi
Loughborough Grammar Sch	1.4 mi
Our Lady's Convent Sch	1.4 mi
Loughborough High Sch	1.4 mi
RNIB College Loughborough	1.4 mi

Discover
Loughborough



- ✓ Swimming Pool
- ✓ Underfloor Heating
- ✓ High-spec Gym
- ✓ Third Floor
- ✓ Concierge Service
- ✓ Allocated Parking





Kitchen



Kitchen



Kitchen



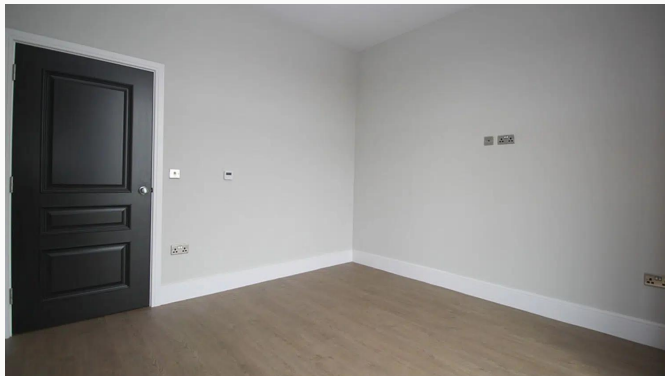
Bedroom



Bedroom



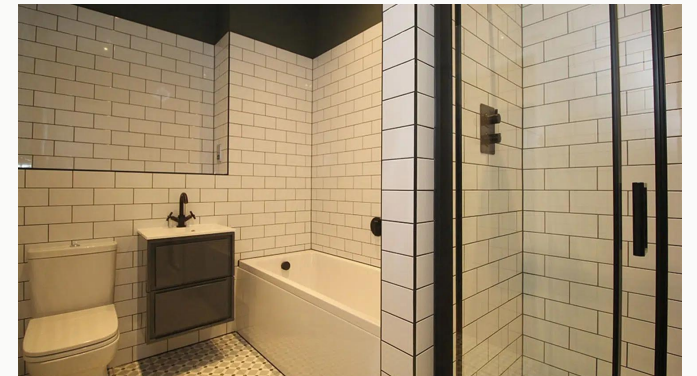
Bedroom



Bedroom



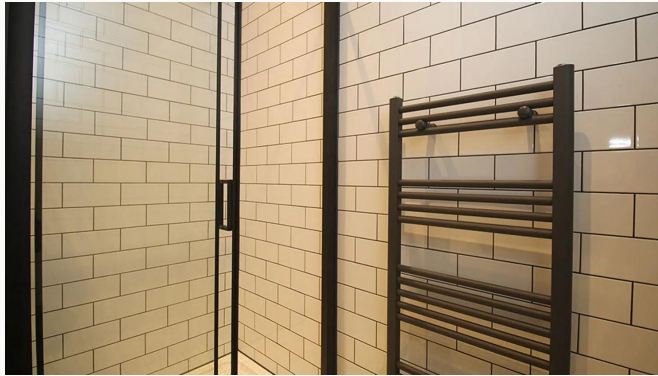
Bathroom



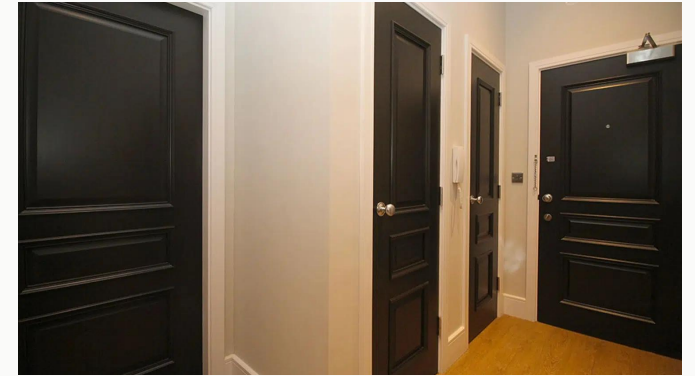
Bathroom



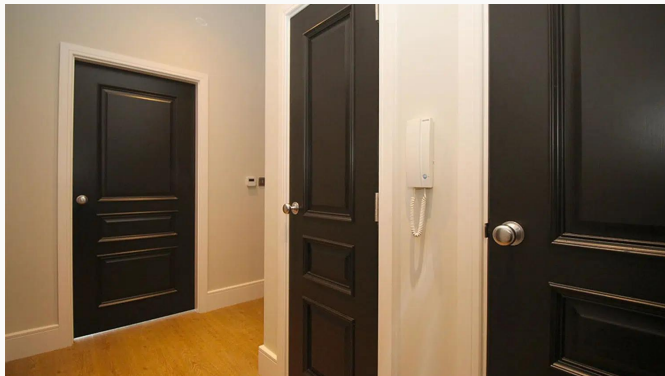
Bathroom



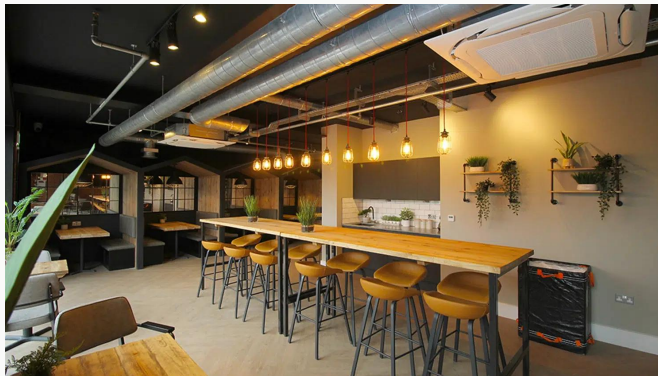
Bathroom



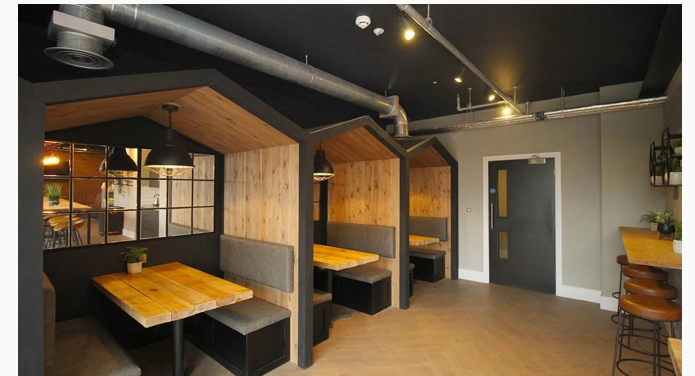
Hallway



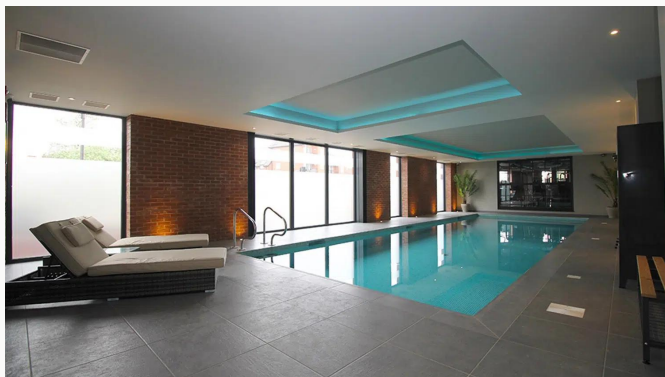
Hallway



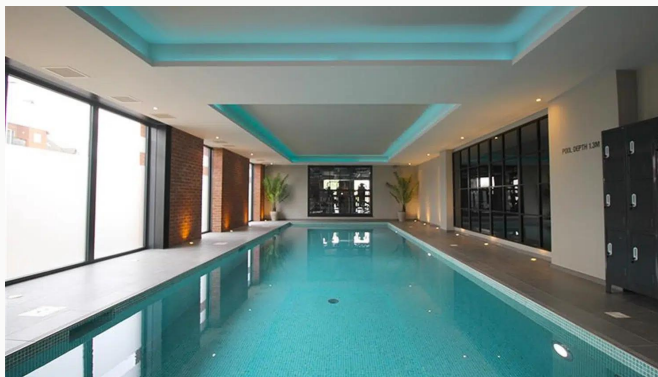
Reception



Reception



Swimming Pool



Swimming Pool



Gym



Gym



The Gate



Waterside Village

Available
From 01/05/2025

Comes
Unfurnished

Bedrooms
1

Receptions
1

Bathrooms
1

Parking
Allocated

Postcode
LE11 1GJ

Rent
£1,150 pcm

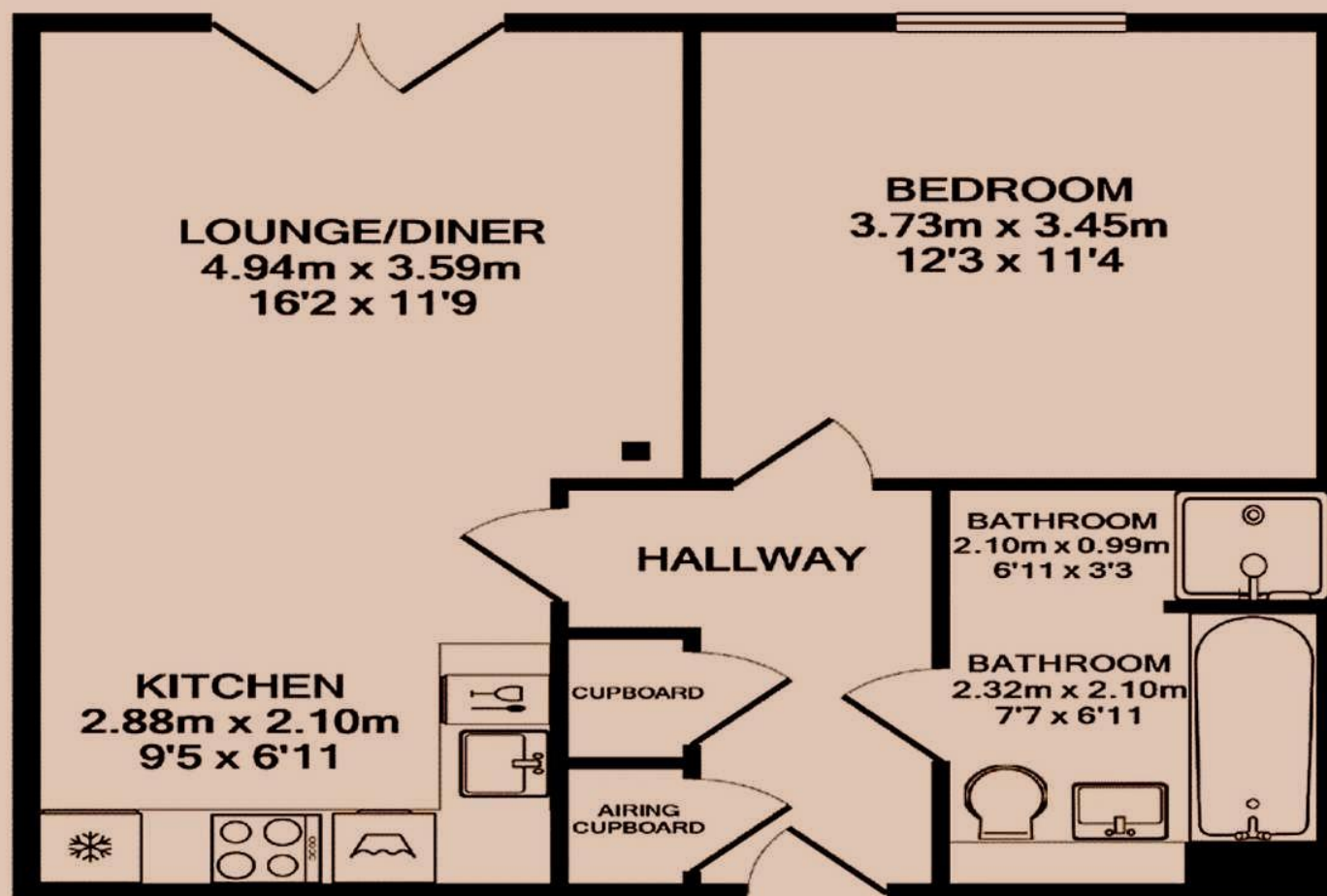
Deposit
£1,320

EPC
84 | B

Council Tax Band
C

ID
#14902

Updated
15/04/2025



Have a property like this? Let's work together.

Design and marketing are at the heart of our approach. With most people now looking for property online, we can get our clients' properties in front of as many people as the most prominent national agents. Where we differ is in the quality of our work. We create stunning digital particulars that highlight the individual attributes of every property we market, with videos and floor plans as standard.



OUR OFFICE
7 Biggin Street
Loughborough, LE11 1UA

CONTACT US
01509 320 320
let@huntleys.net

