

Student

New Ashby Road

Loughborough

4 Bed Student House • LE11 4ET • £94 pppw • £200 Deposit Per Person



New Ashby Road, Loughborough

Spacious four bedroom student property just 50 meters from the university campus entrance. Furnished and decorated to a good specification. The property has an open plan kitchen with breakfast bar and all kitchen appliances, including tumble dryer. Double glazing and gas central heating make this property cosy and warm. Private garden to the rear with lawn, patio & picnic bench. Driveway parking for two cars. Sorry, bills not included. 2025 - 2026 Academic Year.

Kitchen 5.46m (17'11") x 4.03m (13'3")

Great kitchen complete with breakfast bar and dining area. All the appliances you need are included.

Lounge 3.24m (10'8") x 2.66m (8'9")

Spacious lounge with flat screen TV, oversized sofa and armchairs. Opens to the kitchen making this a great social space.

Four bedrooms

All the bedrooms in this house are good sized rooms fully furnished with beds, side tables, desks, chairs, wardrobes and chest of drawers. The rooms are decorated in a neutral style, all of which are double glazed and centrally heated with thermostatic controls.

Bathroom 2.5m (8'2") x 1.66m (5'5")

Situated on the first floor. A contemporary bathroom suite complete with electric shower over the bath and fully tiled.

Toilet

There is a separate upstairs toilet for your convenience.

Garden

The rear garden has a lawn, patio area and picnic bench.

Utilities

Bills not included.

Parking

Driveway parking for several cars to the front of the property with further space available on road without restriction.

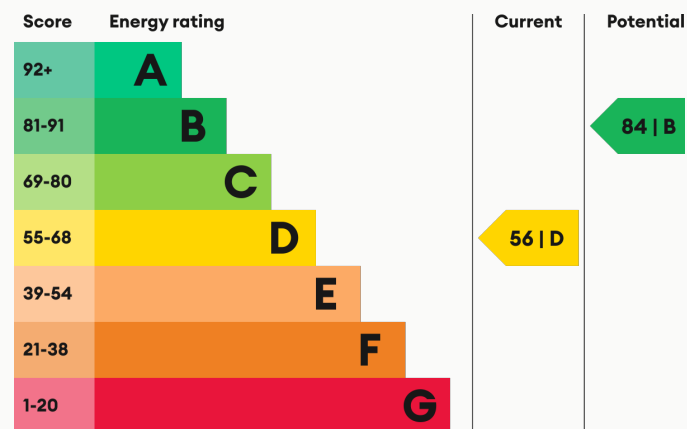
Heating

Worcester Bosch boiler providing efficient gas fired central heating.

Glazing

Modern, good quality, uPVC double glazing.

Energy Performance



We aim to make our particulars both accurate and reliable. However they are not guaranteed; nor do they form part of an offer or contract. If you require clarification on any points then please contact us, especially if you are traveling some distance to view. All measurements are to widest point.



Kitchen



Kitchen



Kitchen / Dining Area



Dining Area



SUPERMARKETS

Co-op Food Knightthorpe Rd	1.0 mi
Sainsburys Loughborough	1.6 mi
Tesco Superstore Loughborough	1.7 mi
Morrisons Loughborough	1.8 mi
Lidl Loughborough	1.8 mi

GYMS

Holywell Fitness Centre	0.8 mi
Burleigh Springs Leisure Club	0.9 mi
Loughborough University Pool	1.1 mi
Loughborough Sport	1.2 mi
Radmoor Centre	1.2 mi

TRAIN STATIONS

Loughborough	2.8 mi
Barrow upon Soar	5.1 mi
Sileby	6.9 mi
East Midlands Parkway	10.6 mi
Syston	11.8 mi

NURSERY SCHOOLS

Little House Day Nursery	0.6 mi
Charnwood College Playgroup	0.7 mi
Kingscliffe Day Nursery	1.2 mi
Loughborough Campus Nursery	1.2 mi
Busy Bees in Loughborough	1.3 mi

PRIMARY SCHOOLS

Booth Wood PS	0.4 mi
Ashmount Sch	0.5 mi
Thorpe Acre Junior Sch	0.6 mi
St Marys Catholic PS	1.3 mi
Mountfields Lodge Sch	1.6 mi

HIGH SCHOOLS

Ashmount Sch	0.5 mi
De Lisle Catholic Science C	0.5 mi
The Garendon High Sch	0.6 mi
Charnwood College	0.7 mi
Loughborough College	1.2 mi

Discover
Loughborough





Living Area



Living Area



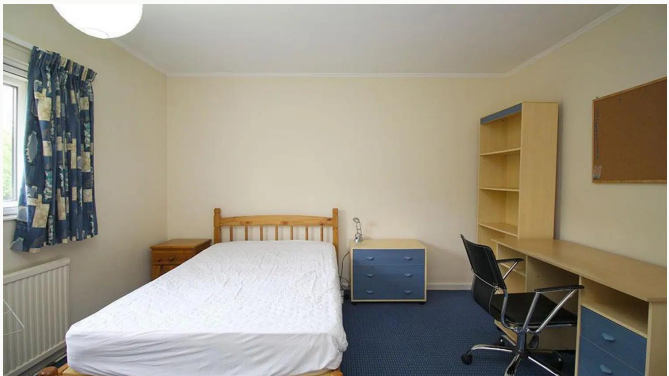
Living Area



Bedroom One



Bedroom One



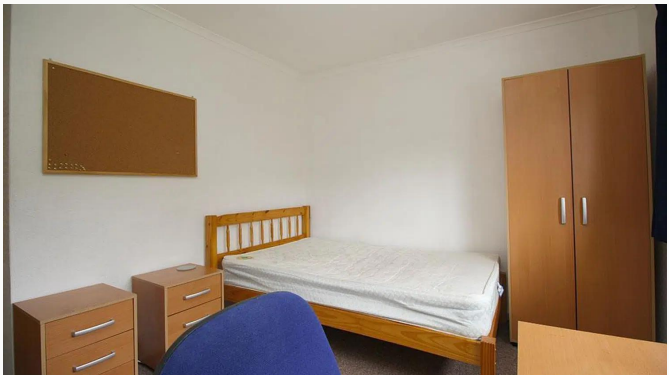
Bedroom One



Bedroom One



Bedroom Two



Bedroom Two



Bedroom Two



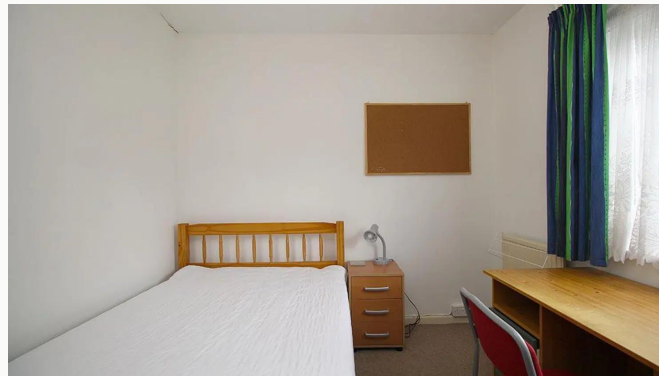
Bedroom Two



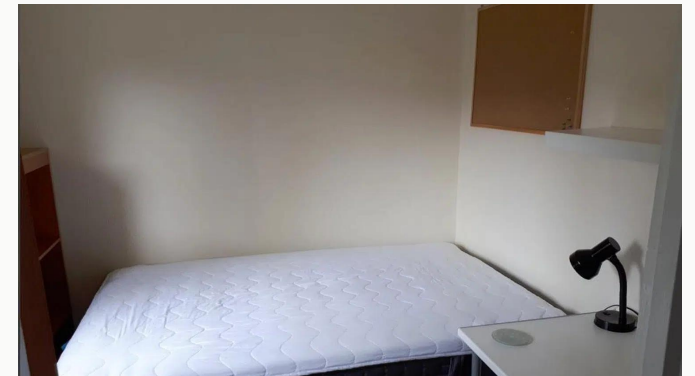
Bedroom Three



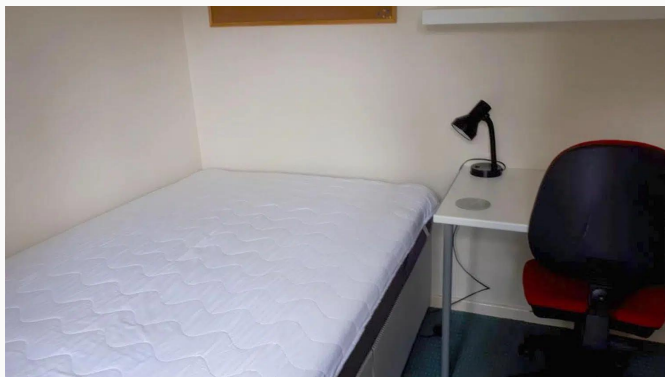
Bedroom Three



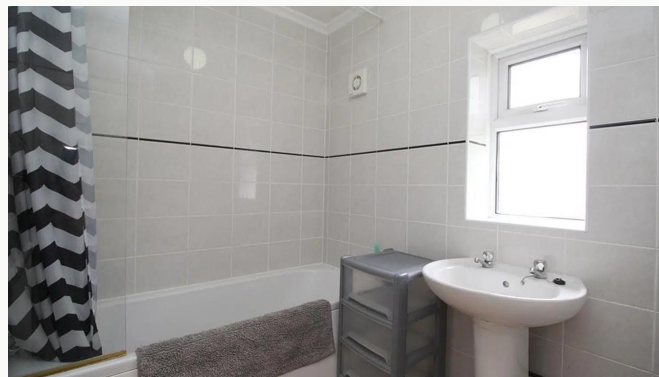
Bedroom Three



Bedroom Four



Bedroom Four



Bathroom



Bathroom



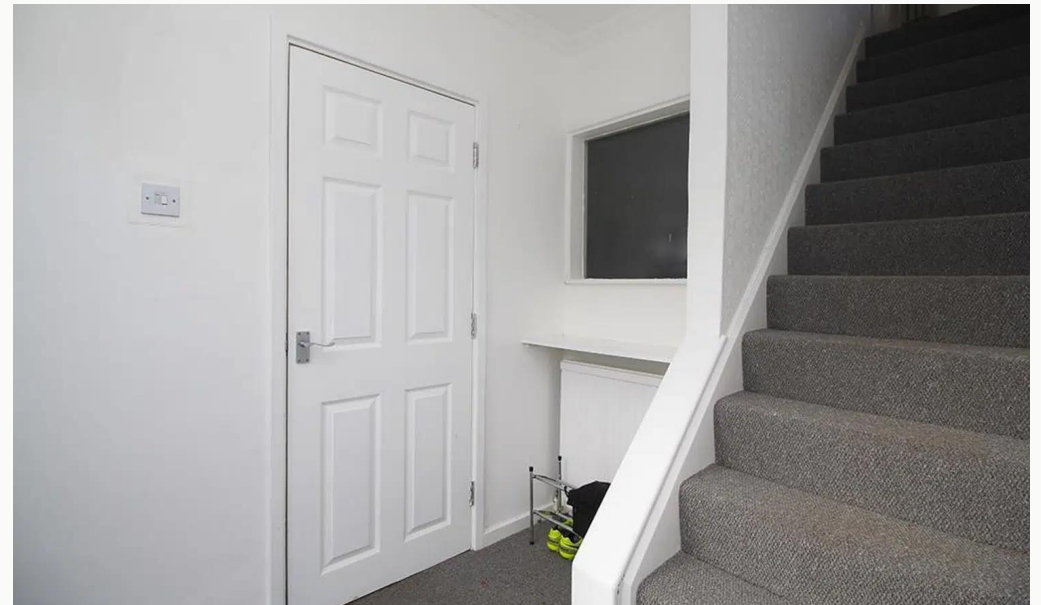
Bathroom



Water Closet



Landing



Entrance hall



Garden Area



Garden Area

Available
From 18/07/2025

Comes
Furnished

Bedrooms
4

Receptions
1

Bathrooms
1

Parking
Driveway

Postcode
LE11 4ET

Rent
£94 pppw

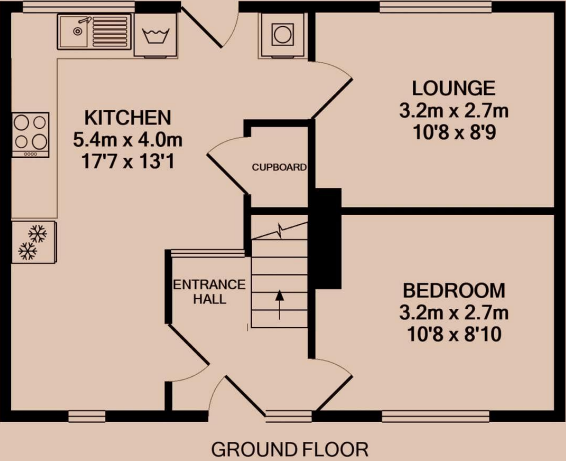
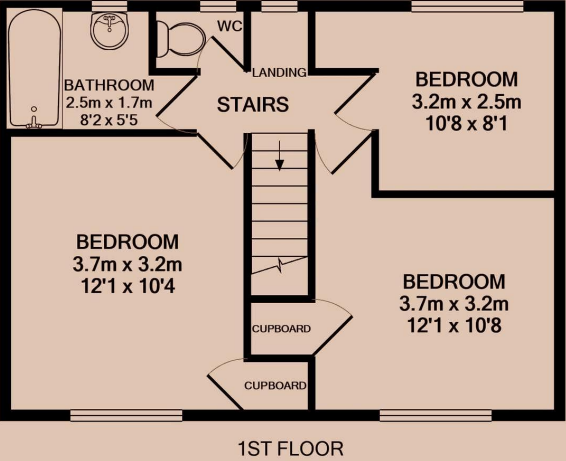
Deposit
£800

EPC
56 | D

Council Tax Band
B

ID
#3990

Updated
18/06/2025



Have a property like this? Let's work together.

Design and marketing are at the heart of our approach. With most people now looking for property online, we can get our clients' properties in front of as many people as the most prominent national agents. Where we differ is in the quality of our work. We create stunning digital particulars that highlight the individual attributes of every property we market, with videos and floor plans as standard.



OUR OFFICE
7 Biggin Street
Loughborough, LE11 1UA

CONTACT US
01509 320 320
let@huntleys.net

