



*Quietways*  
Ulverscroft

4 Bed Semi-Detached House • LE67 9QE • £2,000 pcm • £2,300 Deposit



## Quietways, Ulverscroft

Available to let in Ulverscroft. A grand four-bedroom country house, situated in a rural location. This unfurnished property comes with four bedrooms on the first floor, the master includes a shower, separate bathroom and balcony overlooking the countryside. On the first floor is the other three bedrooms, two lobby rooms and a family bathroom. Downstairs is a lounge, dining room, sizeable kitchen with appliances and a water closet. To the front of the property is a drive-in, drive-out, driveway with two entrances. To the rear of the property is an enormous garden, with views beyond the property boundary. A garage is also included with ample parking on the drive. Please note: the two bedroom maisonette and stables beside the property are currently let to another resident.

### Lounge

A large reception room that runs the depth of the property. Large windows give vast views of the extensive garden and countryside. French doors included for access into the garden. Featured fireplace completes the look.

### Dining Room

Situated in the middle of the home is a dining room. This neutral room comes with French doors that leads to the rear garden.

### Kitchen

A sizeable kitchen that can also be used as a breakfast room. This kitchen comes with an oven and hob, dishwasher and AGA oven. The porch besides the kitchen holds a washing machine.

### Master Bedroom

The largest of all the bedrooms, this bedroom comes with an ensuite bathroom and separate walk-in shower. The sliding glass doors give access to the balcony which overlooks the garden, stables and countryside.

### Bedroom Two

A second double bedroom on the first floor, overlooking the garden. This bedroom has a door to the third bedroom.

### Bedroom Three

A third double bedroom, overlooking the driveway.

### Bedroom Four / Study

A fourth bedroom on the first floor, currently being used as a study.

### Bathroom

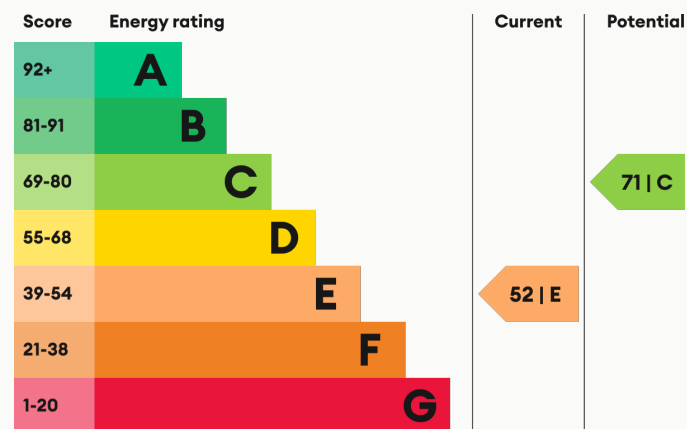
A family bathroom set on the first floor. This modern bathroom comes with a bath and shower head, sink and toilet.

### Ensuite Bathroom / Shower

Accessed via the master bedroom, a three piece bathroom including a bath and shower head, sink and toilet. A separate, walk-in shower is also included in the master bedroom.

For more information about this property, visit our website [huntleys.net](http://huntleys.net).

### Energy Performance



We aim to make our particulars both accurate and reliable. However they are not guaranteed; nor do they form part of an offer or contract. If you require clarification on any points then please contact us, especially if you are traveling some distance to view. All measurements are to widest point.



Garden



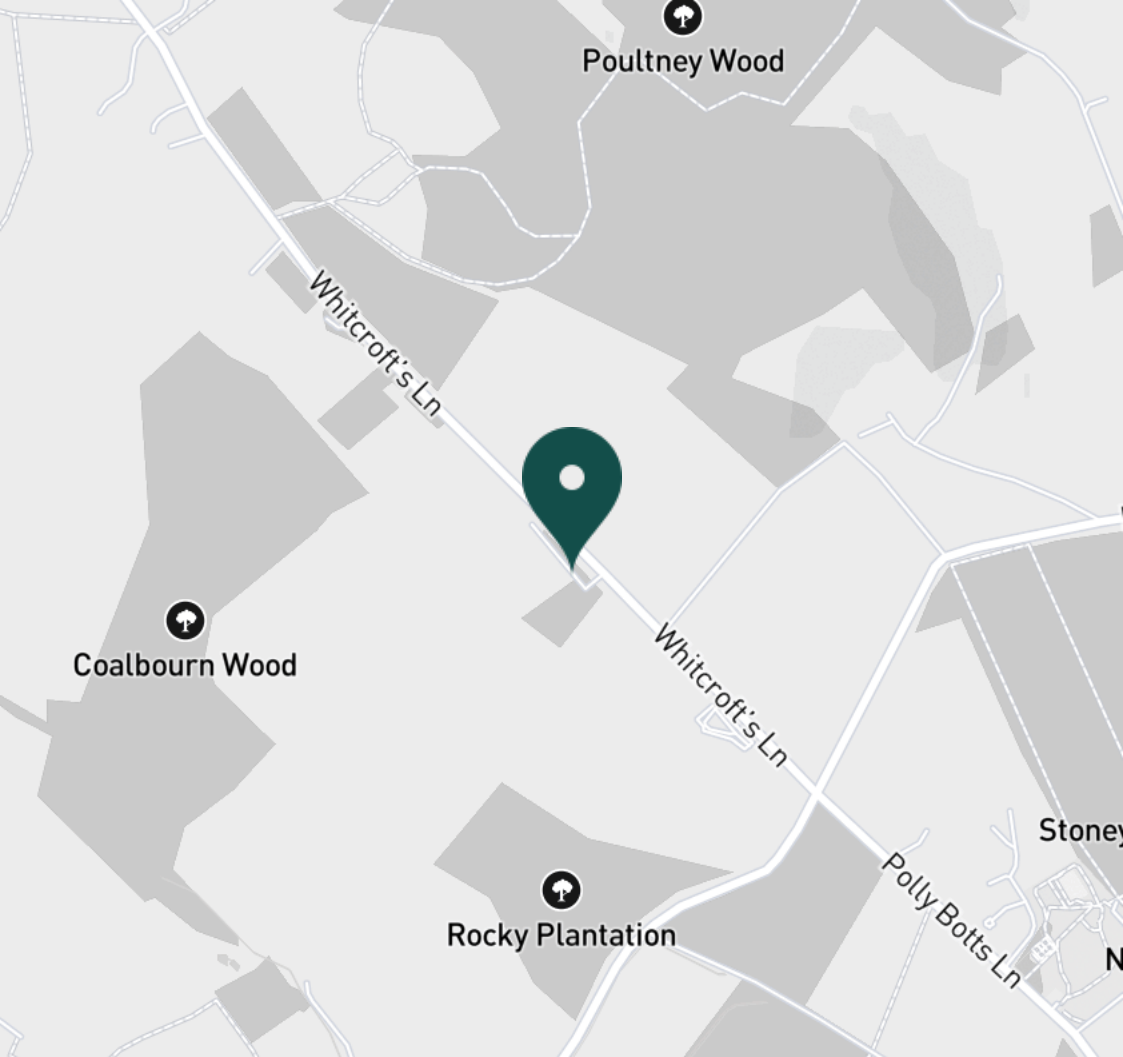
Side Entrance



Lounge



Lounge



#### SUPERMARKETS

Co-op Food Coalville	4.0 mi
Co-op Food Groby	5.0 mi
Co-op Food Hall Croft	5.5 mi
Co-op Food Anson Rd	5.6 mi
Asda Shepshed	5.8 mi

#### GYMS

Stable Fitness	5.5 mi
Holywell Fitness Centre	5.6 mi
Burleigh Springs Leisure Club	5.7 mi
Punchin Pandas Children's Martial Arts	5.9 mi
Radmoor Centre	6.1 mi

#### TRAIN STATIONS

Loughborough	7.4 mi
Barrow upon Soar	8.0 mi
South Wigston	9.0 mi
Leicester	10.4 mi
Narborough	12.6 mi

#### NURSERY SCHOOLS

Woodhouse Day Nursery	3.2 mi
Nanpantan Nursery School	4.2 mi
Cropston PreSch	4.8 mi
Puddle Ducks	4.9 mi
Children 1st Shepshed	5.3 mi

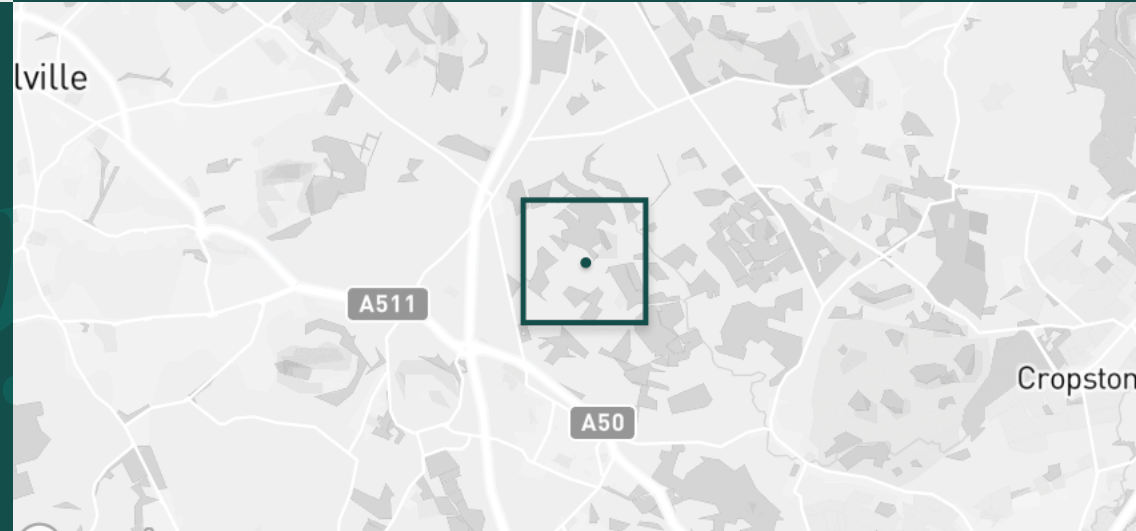
#### PRIMARY SCHOOLS

Mercenfeld PS	2.2 mi
Newtown Linford PS	4.6 mi
St Leonard's CE PS	4.6 mi
Holywell PS	5.0 mi
Newcroft PS	5.1 mi

#### HIGH SCHOOLS

South Charnwood High Sch	3.2 mi
King Edward VII Science and Sports	3.3 mi
Hind Leys Community College	5.6 mi
Brookvale Groby Learning Campus	5.7 mi
Shepshed High Sch	5.7 mi

Discover  
*Ulverscroft*



- ✓ Enormous Garden
- ✓ Rural Location
- ✓ Four Bedrooms
- ✓ Garage
- ✓ Large Driveway
- ✓ Ulverscroft





Lounge



Kitchen



Kitchen



Kitchen



Kitchen



Dining Room



Dining Room



Master Bedroom



Master Bedroom



Master Bedroom



Balcony View



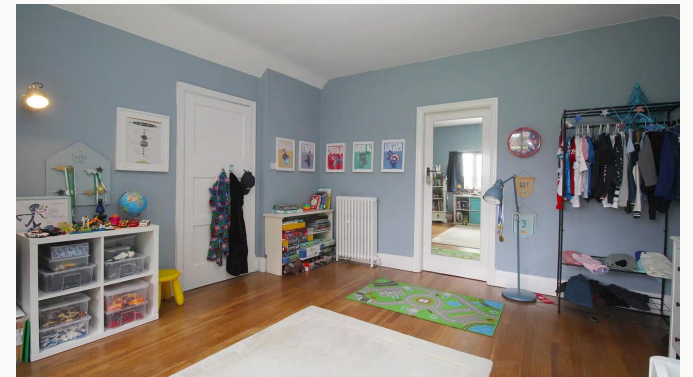
Ensuite Shower



Ensuite Bathroom



Bedroom Two



Bedroom Two



Bedroom Three



Bedroom Three



Bedroom Four / Study



Lobby



Lobby



Bathroom



Water Closet



Hallway



Side Entrance



Garage



Quietways



Driveway Entrance





Driveway



Driveway



Driveway Entrance



Garden



Garden



Quietways

**Available**  
From 03/09/2024

**Comes**  
Unfurnished

**Bedrooms**  
4

**Receptions**  
2

**Bathrooms**  
2

**Parking**  
Driveway

**Postcode**  
LE67 9QE

**Rent**  
£2,000 pcm

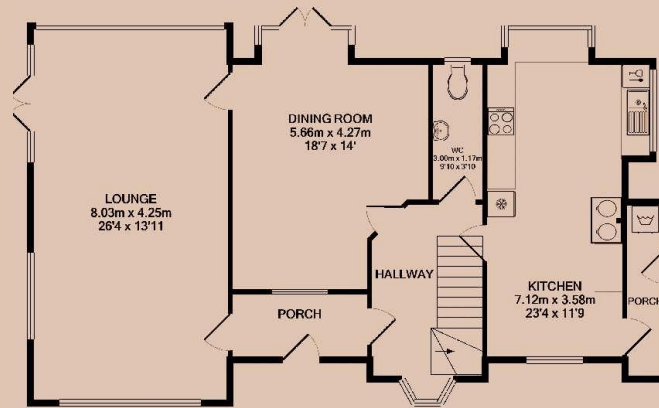
**Deposit**  
£2,300

**EPC**  
52 | E

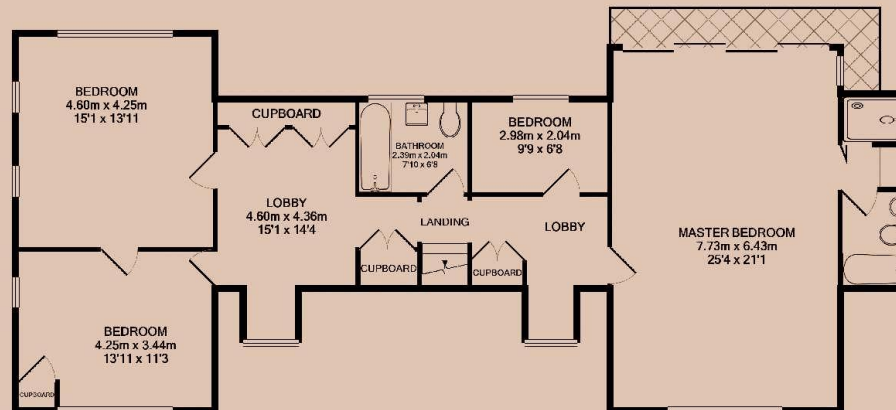
**Council Tax Band**  
G

**ID**  
#14565

**Updated**  
16/08/2024



GROUND FLOOR



1ST FLOOR

# *Have a property like this? Let's work together.*

Design and marketing are at the heart of our approach. With most people now looking for property online, we can get our clients' properties in front of as many people as the most prominent national agents. Where we differ is in the quality of our work. We create stunning digital particulars that highlight the individual attributes of every property we market, with videos and floor plans as standard.



**OUR OFFICE**  
7 Biggin Street  
Loughborough, LE11 1UA

**CONTACT US**  
01509 320 320  
let@huntleys.net

