

The image shows a bright, modern living and kitchen area in a loft apartment. The room features a vaulted ceiling with exposed wooden beams and recessed lighting. On the left, a grey sofa sits on a patterned rug in front of a skylight. To the right, a kitchen unit with light wood cabinets and a black countertop includes a washing machine, dishwasher, oven, and a stainless steel range hood. A colorful abstract painting hangs on the wall above the kitchen. In the foreground, a white storage unit is partially visible.

Kirkbill
Shepshed

1 Bed End of Terrace Apartment • LE12 9PA • £600 pcm • £690 Deposit



Kirkhill, Shepsbed

A one bedroom apartment located close to the Shepsbed village centre. Situated on the second floor, this apartment is presented in great condition. This property is part-furnished and comes with most kitchen appliances needed. Also comes with off-road parking. Soon available to let.

Kitchen / Diner 6.55m (21'6) x 3.16m (10'4)

A spacious kitchen that can also be used as a lounge and/or dining space. The kitchen comes with an under counter fridge/freezer, washing machine, tumble dryer, oven and hob. Sofa also included.

Bedroom 6.55m (21'6) x 3.1m (10'2)

A large double bedroom with built in storage space. Bed included and some furniture may be available upon request.

Shower Room 2.3m (7'7) x 1.58m (5'2)

A three piece shower room including a walk-in shower, sink and toilet.

Parking

Allocated off-road parking available to the rear of the building.

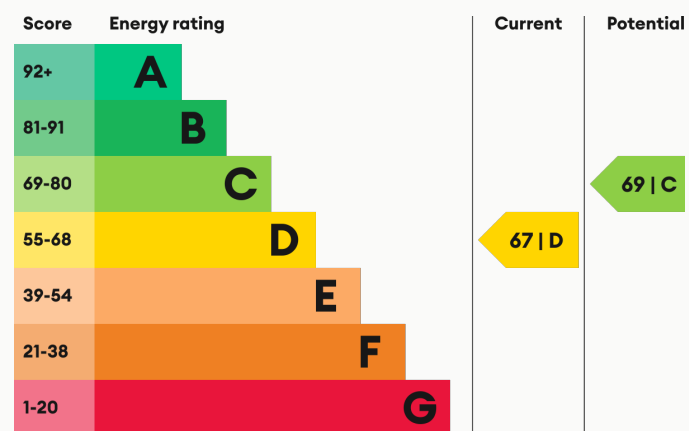
Heating

Gas-fired central heating.

Glazing

Modern, good quality, uPVC double glazing.

Energy Performance



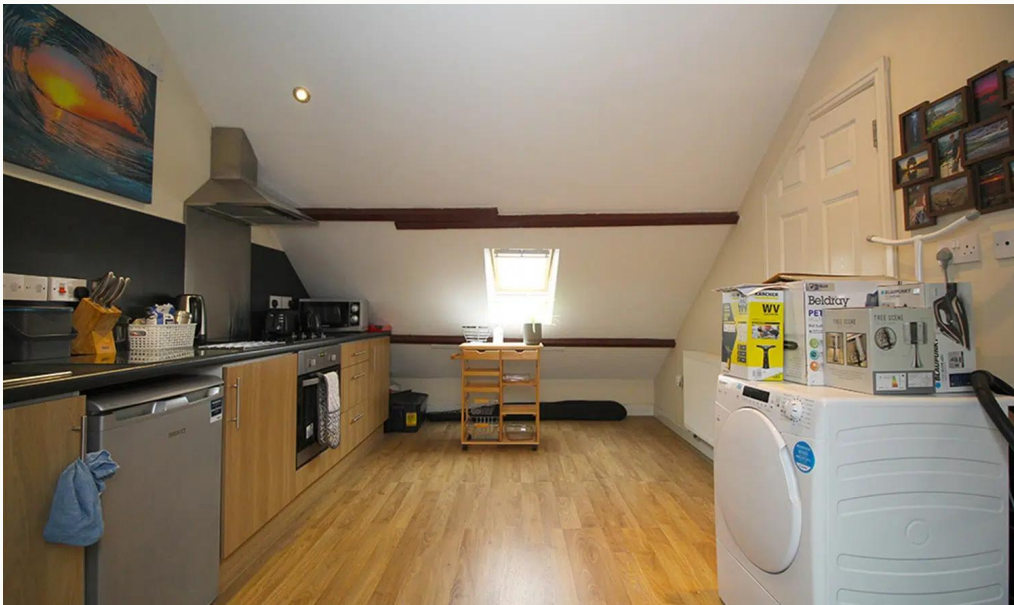
We aim to make our particulars both accurate and reliable. However they are not guaranteed; nor do they form part of an offer or contract. If you require clarification on any points then please contact us, especially if you are traveling some distance to view. All measurements are to widest point.



Kitchen / Diner



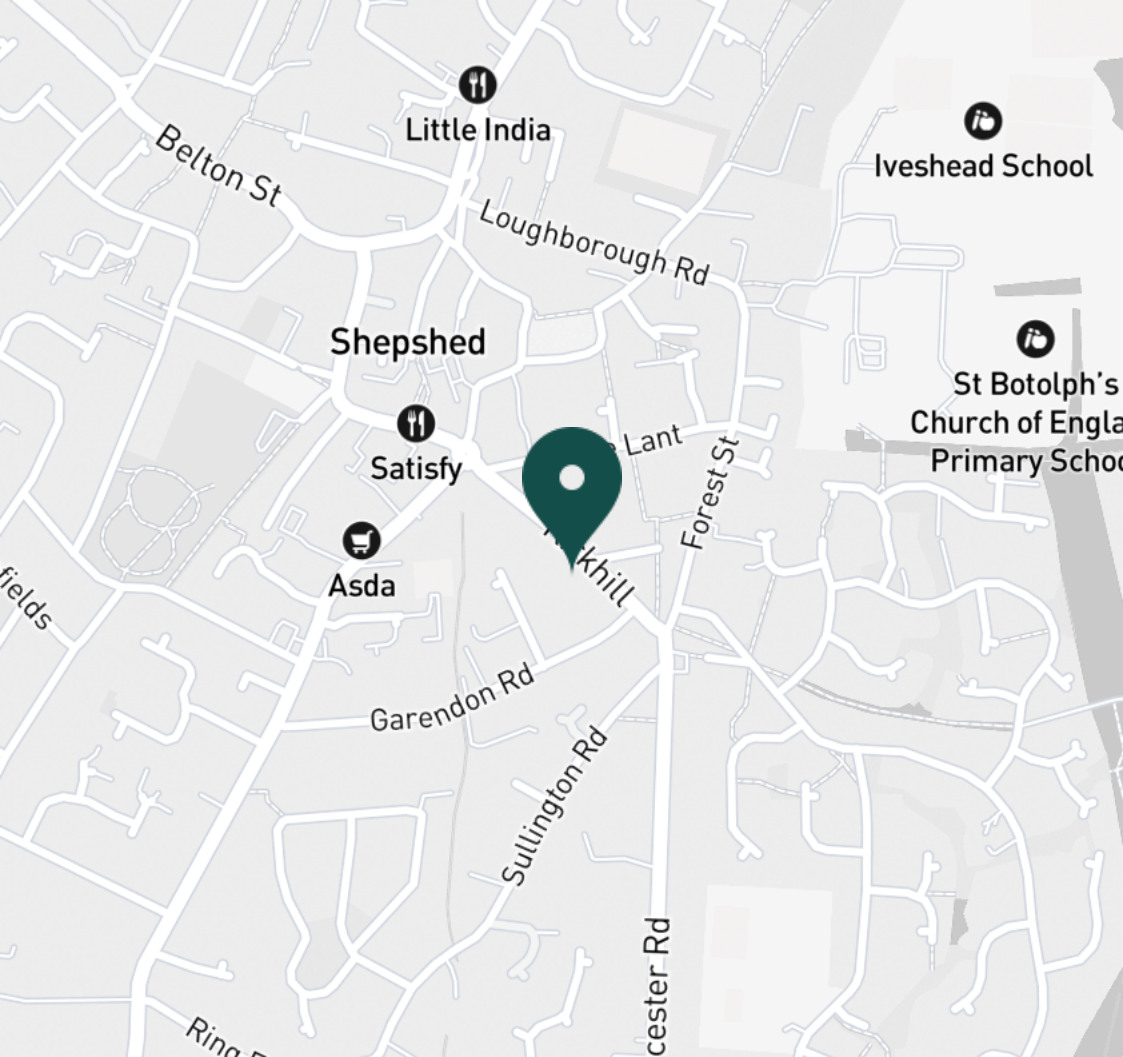
Kitchen / Diner



Kitchen / Diner



Kitchen / Diner



SUPERMARKETS

Asda Shepshed	0.2 mi
Co-op Food Hall Croft	0.2 mi
Co-op Food Anson Rd	0.9 mi
Co-op Food Knightthorpe Rd	3.7 mi
Co-op Food Coalville	4.0 mi

GYMS

Stable Fitness	0.2 mi
Punchin Pandas Children's Martial Arts	0.2 mi
Viking Fitness Centre	2.4 mi
Holywell Fitness Centre	2.9 mi
Burleigh Springs Leisure Club	3.0 mi

TRAIN STATIONS

Loughborough	5.9 mi
Barrow upon Soar	7.8 mi
Sileby	9.6 mi
East Midlands Parkway	10.0 mi
Long Eaton	12.1 mi

NURSERY SCHOOLS

Children 1st Shepshed	0.2 mi
The Oak Treehouse	0.5 mi
Hind Leys PS	0.5 mi
Charnwood Day Nursery	0.5 mi
Moors Farm Day Nursery	2.8 mi

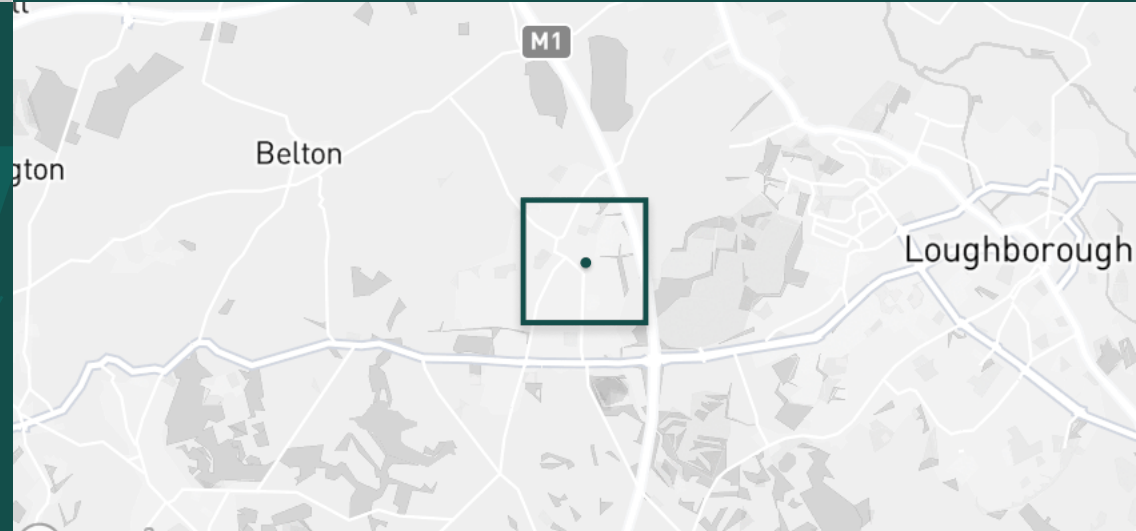
PRIMARY SCHOOLS

St Winefrides Catholic PS	0.2 mi
St Botolphs CE PS	0.5 mi
Newcroft PS	0.5 mi
Oxley PS	0.7 mi
Belton CE PS	3.0 mi

HIGH SCHOOLS

Hind Leys Community College	0.5 mi
Shepshed High Sch	0.6 mi
Ashmount Sch	3.1 mi
De Lisle Catholic Science C	3.2 mi
The Garendon High Sch	3.2 mi

Discover
Shepshed





Bedroom



Bedroom



Bedroom



Bedroom



Bedroom



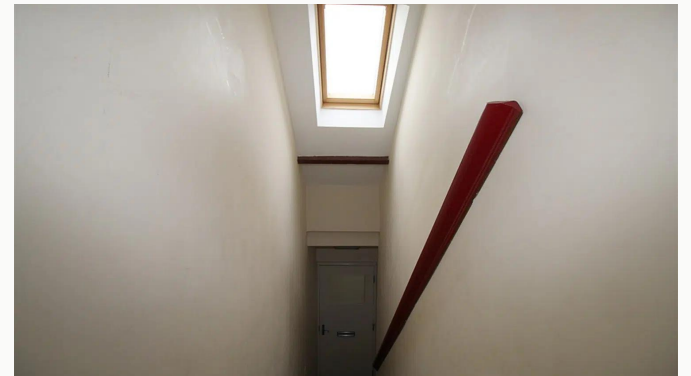
Shower Room



Hallway



Hallway



Entrance Stairs



Apartment Access



Carpark Entrance

Available
From 24/08/2024

Comes
Part Furnished

Bedrooms
1

Receptions
0

Bathrooms
1

Parking
Allocated

Postcode
LE12 9PA

Rent
£600 pcm

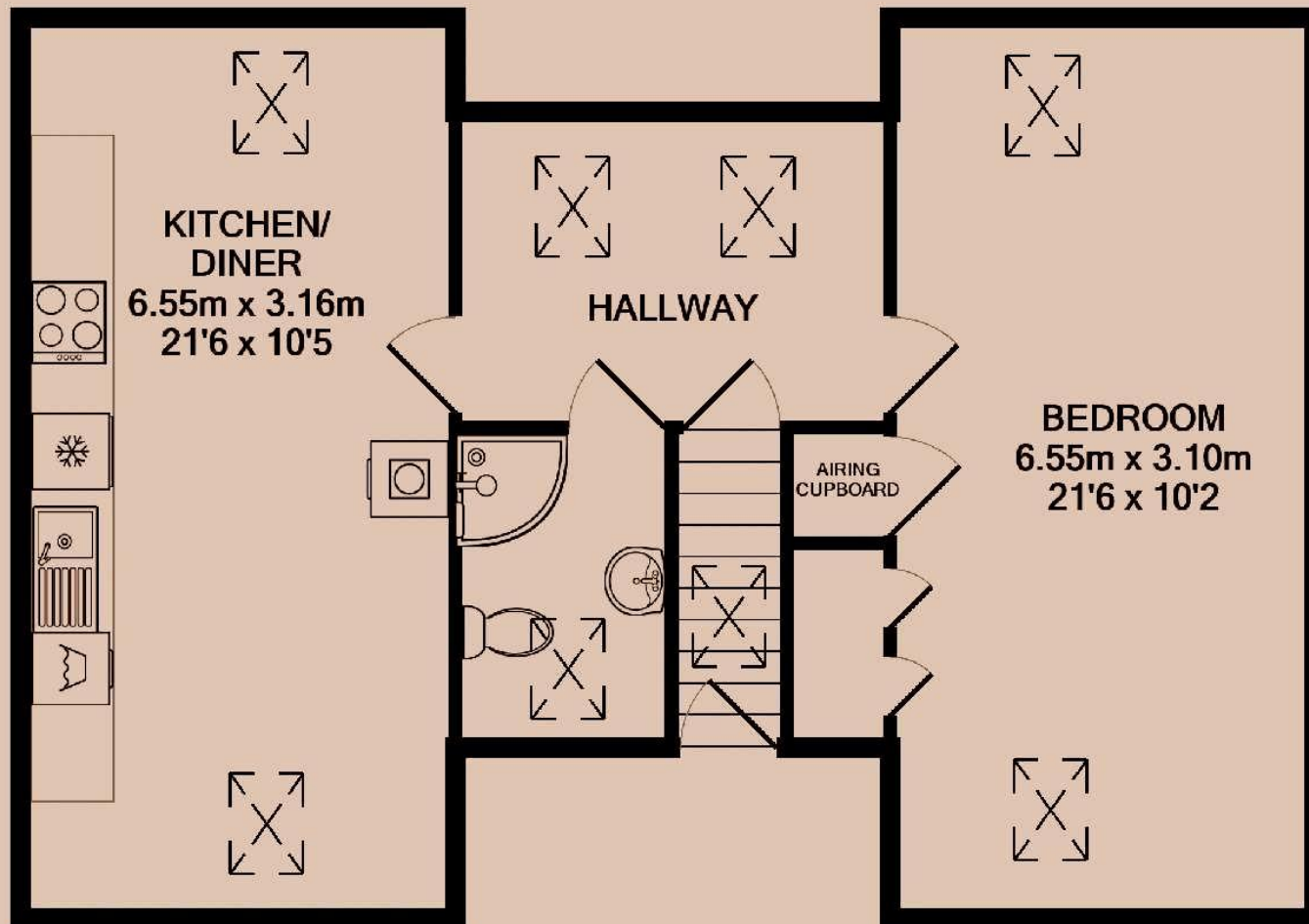
Deposit
£690

EPC
67 | D

Council Tax Band
A

ID
#9554

Updated
15/07/2024



Have a property like this? Let's work together.

Design and marketing are at the heart of our approach. With most people now looking for property online, we can get our clients' properties in front of as many people as the most prominent national agents. Where we differ is in the quality of our work. We create stunning digital particulars that highlight the individual attributes of every property we market, with videos and floor plans as standard.



OUR OFFICE
7 Biggin Street
Loughborough, LE11 1UA

CONTACT US
01509 320 320
let@huntleys.net



Huntleys

