



Carington Street
Loughborough

3 Bed Semi-Detached House • LE11 5NF • £1,100 pcm • £1,260 Deposit



Carington Street, Loughborough

Soon available to let in Loughborough and situated on a private road. A semi-detached, three-bedroom house. This property comes with a sizeable lounge, extended kitchen/diner, downstairs bathroom, three bedrooms with a private water closet by the master bedroom. To the rear of the property is a good sized garden and to the front is a driveway for parking. All photos and video tour are of actual property.

Lounge

Situated at the front of the property, a sizeable living room, includes cupboards pictured.

Kitchen / Diner

An extended kitchen overlooking the rear garden. This kitchen is open to the dining area, which includes additional storage. This kitchen also comes with an integrated dishwasher, oven and hob.

Master Bedroom

A sizeable double bedroom overlooking Carington Street. This double bedroom comes with a built-in wardrobe and water closet.

Bedroom Two

A second double bedroom, overlooking the garden.

Bedroom Three

A third bedroom on the first floor, could also be used as a study.

Bathroom

Set on the ground floor, a modern three-piece washroom. Includes a bath, sink and toilet.

Garden

Set to the rear of the property. A private and sizeable garden. Includes a sizeable shed for storage and an outhouse by the building, which stores the washing machine.

Parking

To the front of the property is a driveway for parking.

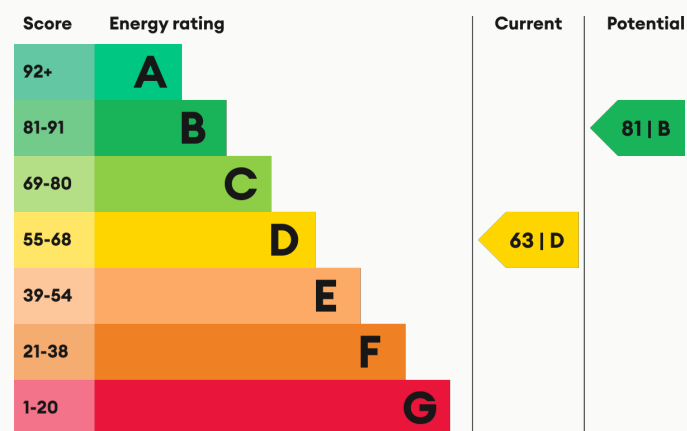
Heating

Gas-fired central heating.

Glazing

Modern, good quality, uPVC double glazing.

Energy Performance



We aim to make our particulars both accurate and reliable. However they are not guaranteed; nor do they form part of an offer or contract. If you require clarification on any points then please contact us, especially if you are traveling some distance to view. All measurements are to widest point.



Dining Area



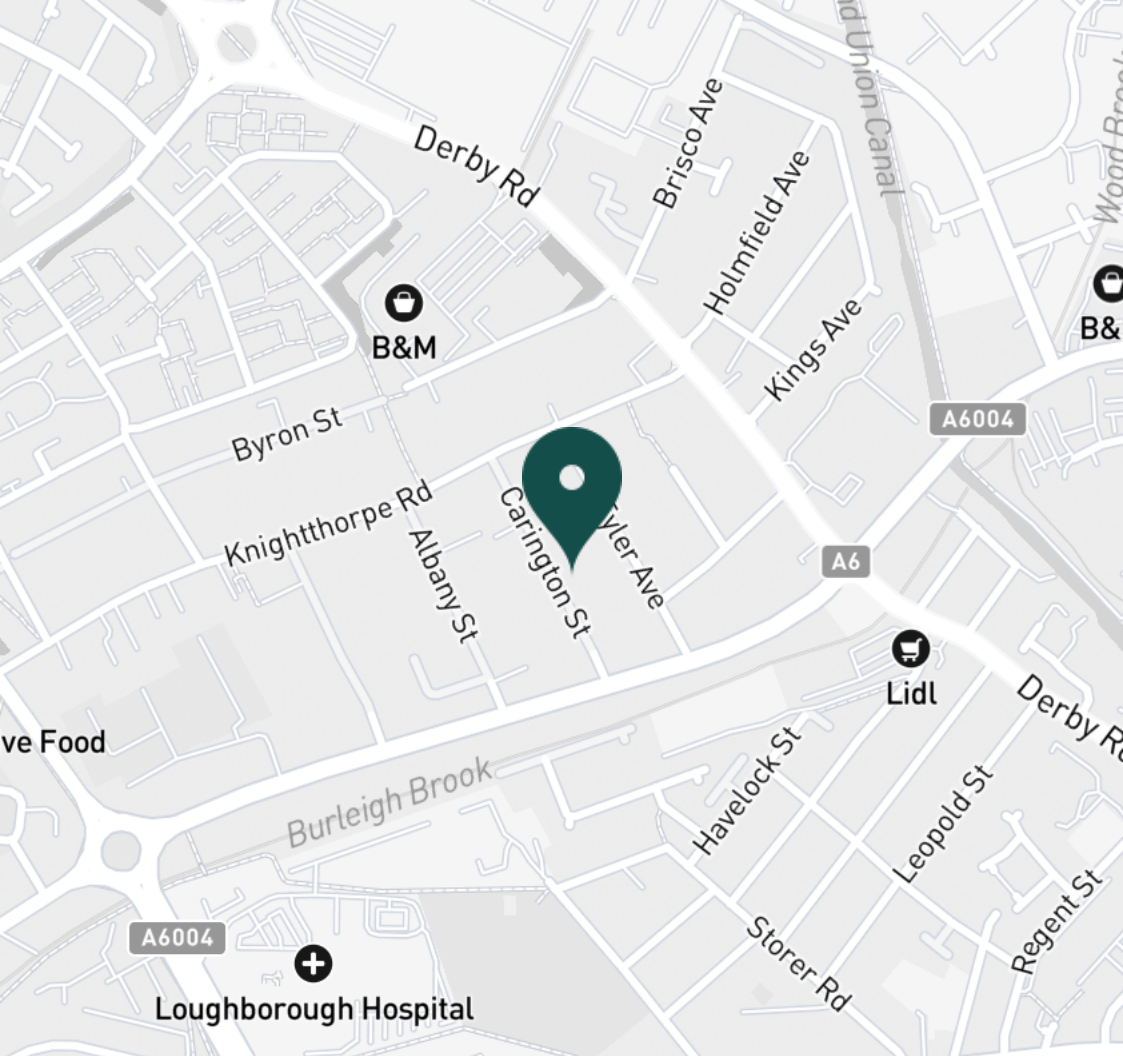
Dining Area



Dining Area



Kitchen



SUPERMARKETS

Lidl Loughborough	0.4 mi
Co-op Food Knightthorpe Rd	0.5 mi
Aldi Loughborough	0.6 mi
Tesco Superstore Loughborough	0.7 mi
Morrisons Loughborough	0.9 mi

GYMS

Anytime Fitness Loughborough	0.6 mi
PureGym Loughborough	0.8 mi
Loughborough University Pool	0.9 mi
Loughborough Sport	1.0 mi
Radmoor Centre	1.0 mi

TRAIN STATIONS

Loughborough	1.4 mi
Barrow upon Soar	4.6 mi
Sileby	6.5 mi
East Midlands Parkway	9.5 mi
Syston	10.6 mi

NURSERY SCHOOLS

Little House Day Nursery	0.6 mi
Busy Bees in Loughborough	0.7 mi
Babblebrooke Day Nursery	0.8 mi
Robert Bakewell Playgroup	0.8 mi
Small World Nursery	0.9 mi

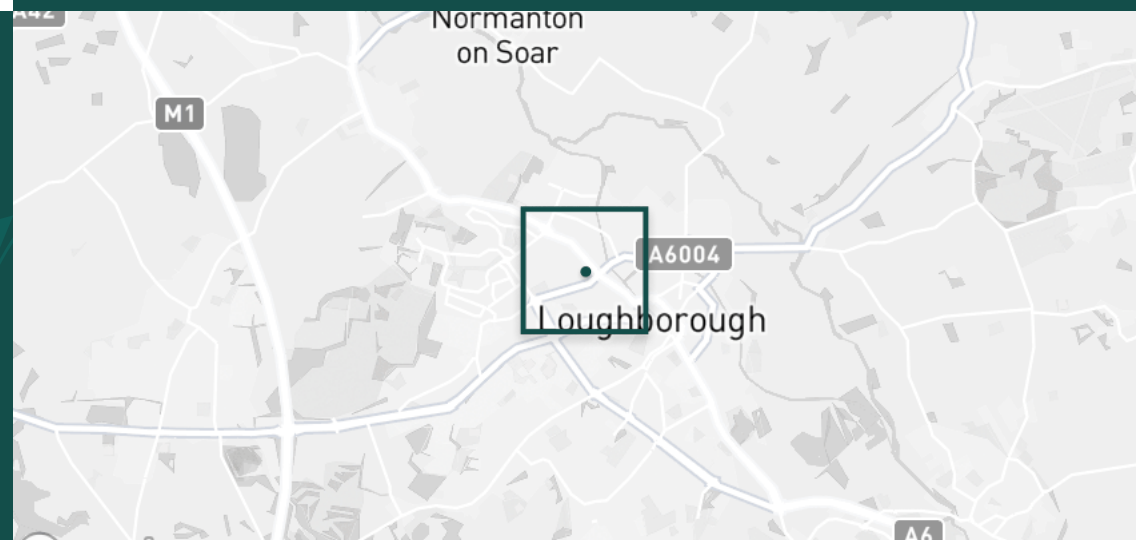
PRIMARY SCHOOLS

St Marys Catholic PS	0.8 mi
Robert Bakewell PS	0.9 mi
Thorpe Acre Junior Sch	0.9 mi
Rendell Primary School	1.1 mi
Ashmount Sch	1.2 mi

HIGH SCHOOLS

Limehurst Academy	0.9 mi
The Garendon High Sch	1.0 mi
De Lisle Catholic Science C	1.0 mi
Loughborough College	1.0 mi
RNIB College Loughborough	1.1 mi

Discover
Loughborough



- ✓ Three Bedrooms
- ✓ Water Closet
- ✓ Loughborough
- ✓ Sizeable Garden
- ✓ Driveway
- ✓ Semi-detached





Lounge



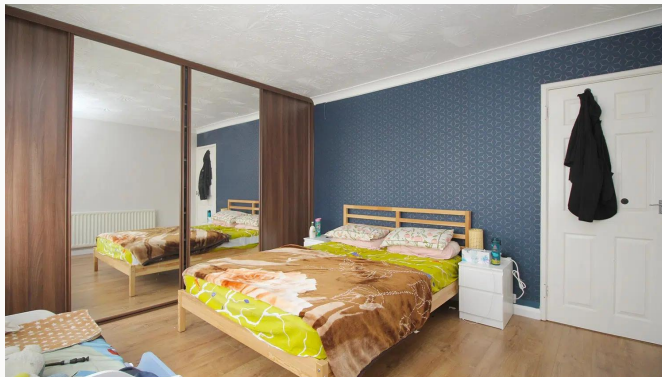
Lounge



Lounge



Lounge



Master Bedroom



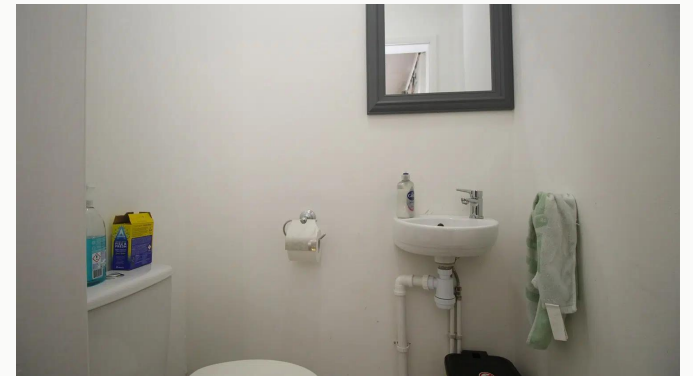
Master Bedroom



Master Bedroom



Master Bedroom



Water Closet



Bedroom Two



Bedroom Two



Bedroom Two



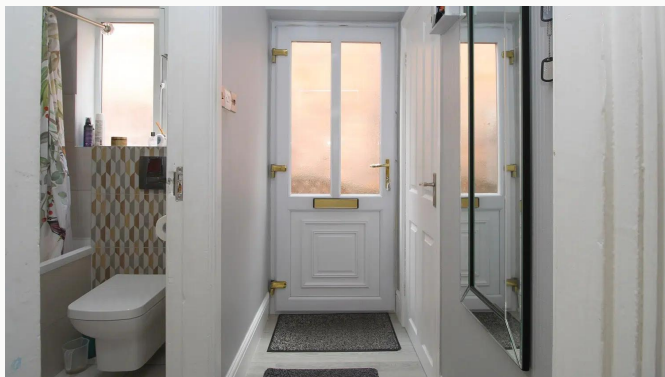
Bedroom Three



Bedroom Three



Bathroom



Entrance



Garden



Garden



Garden



Outhouse



Garden



Carington Street

Available
From 25/07/2024

Comes
Part Furnished

Bedrooms
3

Receptions
1

Bathrooms
1

Parking
Driveway

Postcode
LE11 5NF

Rent
£1,100 pcm

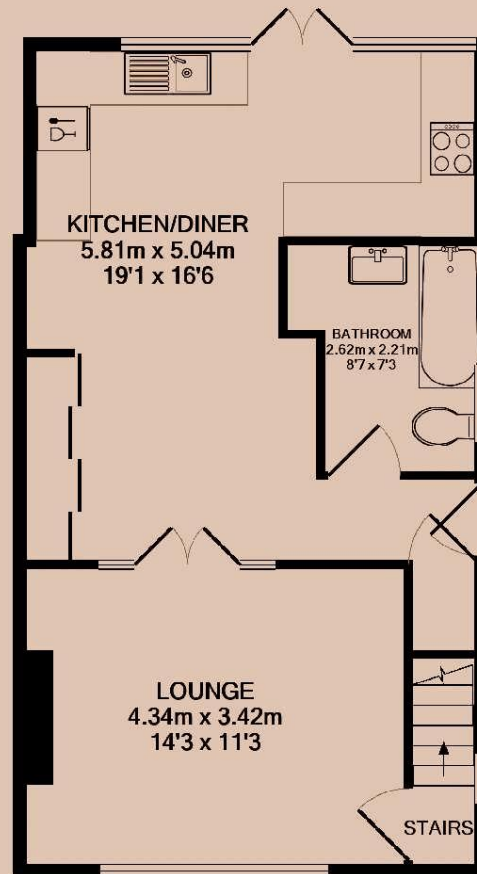
Deposit
£1,260

EPC
63 | D

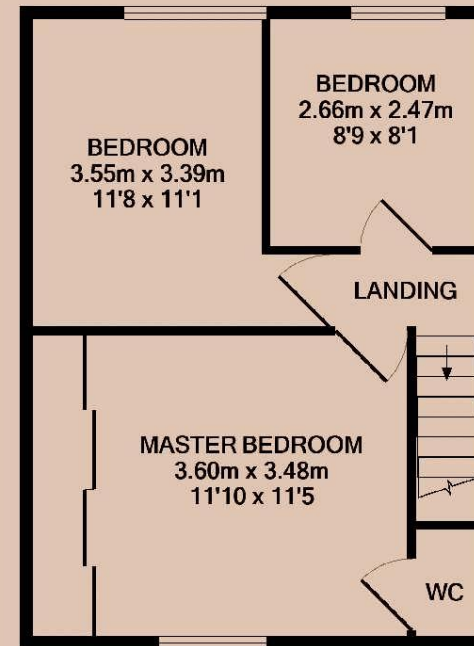
Council Tax Band
B

ID
#13934

Updated
20/06/2024



GROUND FLOOR



1ST FLOOR

Have a property like this? Let's work together.

Design and marketing are at the heart of our approach. With most people now looking for property online, we can get our clients' properties in front of as many people as the most prominent national agents. Where we differ is in the quality of our work. We create stunning digital particulars that highlight the individual attributes of every property we market, with videos and floor plans as standard.



OUR OFFICE
7 Biggin Street
Loughborough, LE11 1UA

CONTACT US
01509 320 320
let@huntleys.net

