

Student

Leopold Street

Loughborough

4 Bed Student House • LE11 5DW • £24 pppw • £100 Deposit Per Person



Leopold Street, Loughborough

FOUR double bedrooms. STUDENT property. Located in the GOLDEN TRIANGLE, Fully FURNISHED. Side access to low maintenance rear garden. Clean and Smart. Double glazed and centrally heated. Just along from the PAGET ARMS. BILLS INCLUDED. 2024 - 2025 Academic year. Rent and deposit listed is per person for a group of four.

Lounge

The hub of the home including furniture and television. Access to the Kitchen keeps the home social.

Kitchen

A practical and fully equipped galley Kitchen. Includes all the appliances you'll need.

Four Bedrooms

All four bedrooms in this house are good sized double rooms fully furnished. The rooms are all decorated neutrally and are double glazed and centrally heated.

Shower Room

Shower Room

Garden

A simple moderately sized garden to the rear.

Parking

On street parking available with permit.

Utilities

Bills Included.

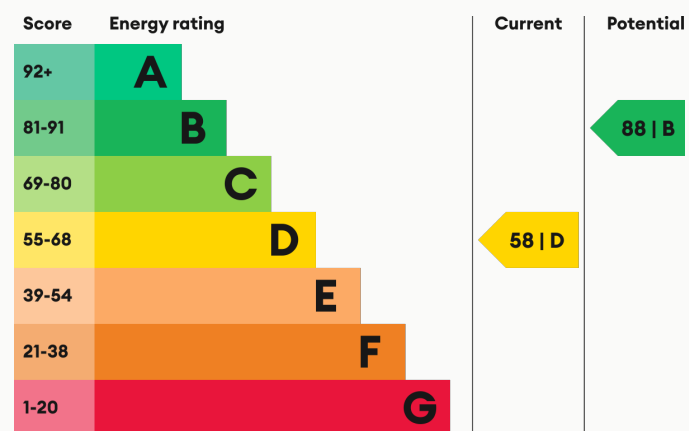
Heating

Gas-fired central heating.

Glazing

Modern, good quality, uPVC double glazing.

Energy Performance



We aim to make our particulars both accurate and reliable. However they are not guaranteed; nor do they form part of an offer or contract. If you require clarification on any points then please contact us, especially if you are traveling some distance to view. All measurements are to widest point.



Lounge



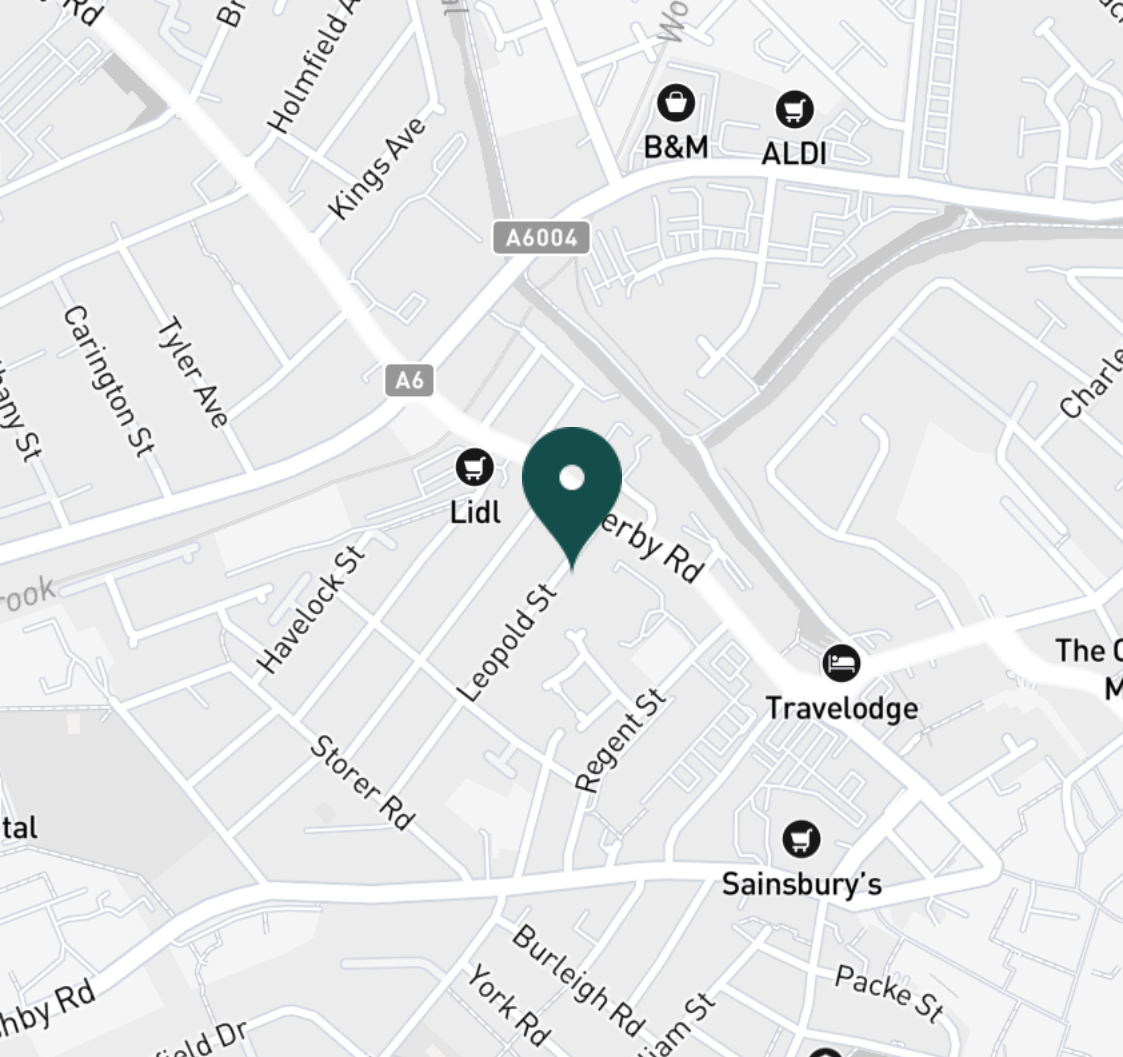
Lounge



Kitchen



Kitchen



SUPERMARKETS

Lidl Loughborough	0.2 mi
Tesco Superstore Loughborough	0.3 mi
Sainsburys Loughborough	0.5 mi
Aldi Loughborough	0.6 mi
Co-op Food Knightthorpe Rd	1.0 mi

GYMS

Anytime Fitness Loughborough	0.3 mi
PureGym Loughborough	0.4 mi
CrossFit Loughborough	0.7 mi
Dynamite Gym Ltd	0.9 mi
Fit4Less	1.1 mi

TRAIN STATIONS

Loughborough	1.1 mi
Barrow upon Soar	4.2 mi
Sileby	6.1 mi
East Midlands Parkway	9.6 mi
Syston	10.2 mi

NURSERY SCHOOLS

Busy Bees in Loughborough	0.2 mi
Kingscliffe Day Nursery	0.4 mi
Babblebrooke Day Nursery	0.4 mi
Small World Nursery	0.6 mi
Cobden Childrens Centre	0.8 mi

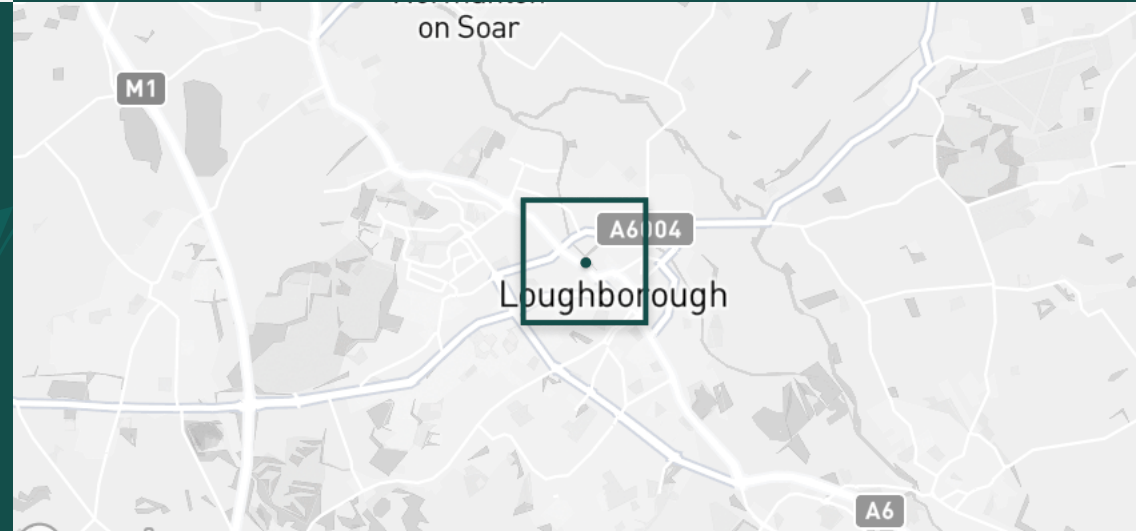
PRIMARY SCHOOLS

St Marys Catholic PS	0.4 mi
Loughborough CE PS	0.7 mi
Rendell Primary School	0.7 mi
Cobden PS	0.9 mi
Robert Bakewell PS	1.0 mi

HIGH SCHOOLS

Limehurst Academy	0.5 mi
RNIB College Loughborough	0.6 mi
The Garendon High Sch	1.2 mi
De Lisle Catholic Science C	1.2 mi
Loughborough College	1.3 mi

Discover
Loughborough



- ✓ Four Double Bedrooms
- ✓ Fully Furnished
- ✓ Golden Triangle Location
- ✓ Bills Included
- ✓ Spacious Accomodation
- ✓ Student Property





Kitchen



Bedroom



Bedroom



Bedroom



Bedroom



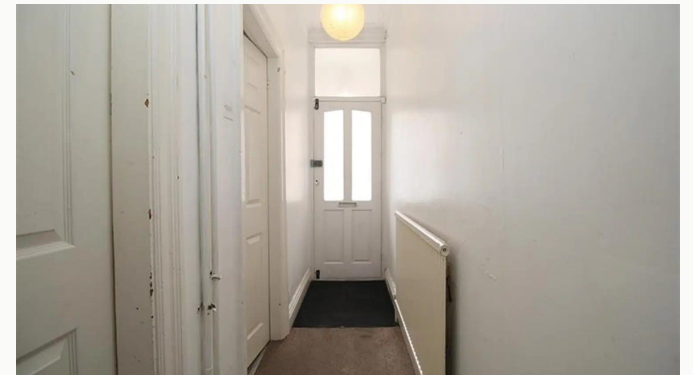
Bedroom



Bedroom



Shower Room



Hallway



Garden



Garden

Available
From 08/07/2024

Comes
Furnished

Bedrooms
4

Receptions
1

Bathrooms
1

Parking
With permit

Postcode
LE11 5DW

Rent
£24 pppw

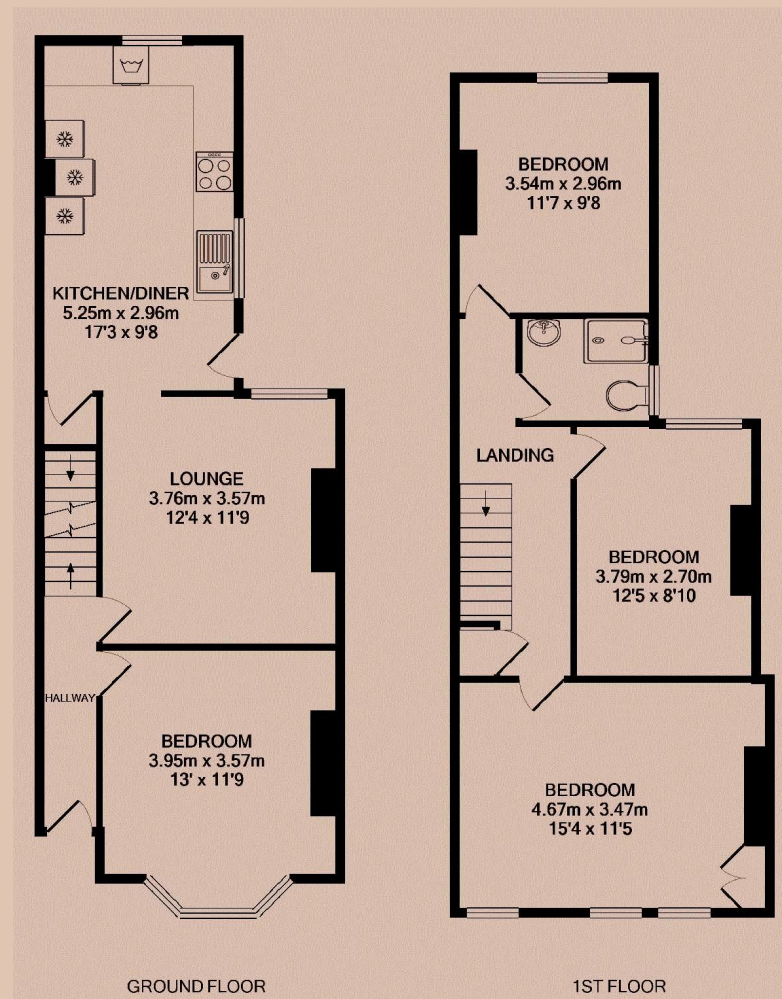
Deposit
£400

EPC
58 | D

Council Tax Band
B

ID
#14074

Updated
18/06/2024



Have a property like this? Let's work together.

Design and marketing are at the heart of our approach. With most people now looking for property online, we can get our clients' properties in front of as many people as the most prominent national agents. Where we differ is in the quality of our work. We create stunning digital particulars that highlight the individual attributes of every property we market, with videos and floor plans as standard.



OUR OFFICE
7 Biggin Street
Loughborough, LE11 1UA

CONTACT US
01509 320 320
let@huntleys.net

