



Henderson Way
Loughborough

2 Bed 2nd Floor Apartment • LE11 1SS • £975 pcm • £1,120 Deposit



Henderson Way, Loughborough

Presented in great condition and soon available to let. A modern, first-floor, two double bedroom apartment situated in Loughborough Town. This furnished property comes with two double bedrooms, bathroom, ensuite and open lounge / kitchen. This apartment comes with an allocated parking space within a gated car park to the rear of the block.

Lounge

Open to the kitchen, a bright living area including main furniture pictured. This room is large enough to be used as a diner.

Kitchen

Open to the lounge, a sizeable, modern kitchen. This kitchen includes an integrated fridge/freezer, washer/dryer, oven and hob.

Master Bedroom

A spacious double bedroom, including access to an ensuite shower room. Main furniture pictured is included.

Bedroom Two

A second double bedroom also comes with main furniture pictured.

Bathroom

A neutral three piece family bathroom. This washroom includes a bath, sink and toilet.

Ensuite

Accessed via the master bedroom, a three piece shower room. This room includes a walk-in shower, sink and toilet.

Parking

Allocated parking for one car is situated within the gated block car park.

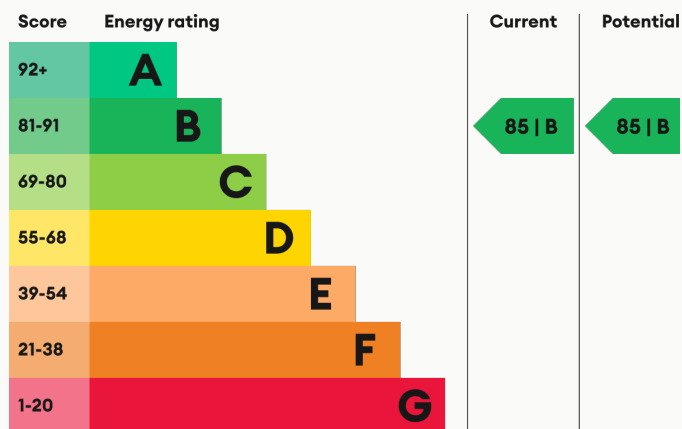
Heating

Gas-fired central heating.

Glazing

Modern, good quality, uPVC double glazing.

Energy Performance



We aim to make our particulars both accurate and reliable. However they are not guaranteed; nor do they form part of an offer or contract. If you require clarification on any points then please contact us, especially if you are traveling some distance to view. All measurements are to widest point.



Lounge / Kitchen



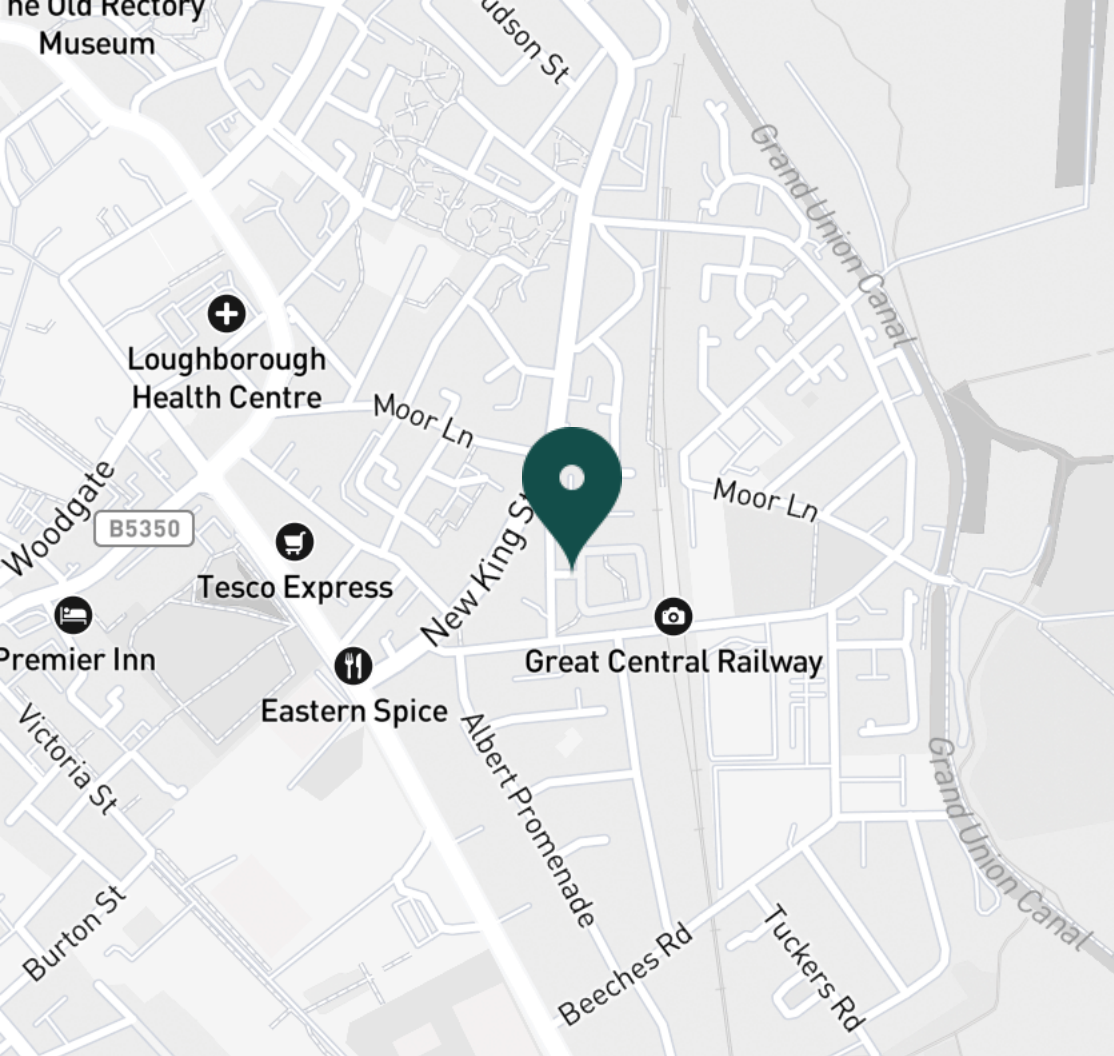
Lounge / Kitchen



Kitchen



Master Bedroom



SUPERMARKETS

Marks & Spencer	0.6 mi
Tesco Superstore Loughborough	1.2 mi
Aldi Loughborough	1.3 mi
Tesco Extra Loughborough	1.4 mi
Lidl Loughborough	1.4 mi

GYMS

NPC Performance Centre	0.3 mi
Dynamite Gym Ltd	0.5 mi
PureGym Loughborough	0.6 mi
Fit4Less	0.7 mi
CrossFit Loughborough	0.8 mi

TRAIN STATIONS

Loughborough	0.9 mi
Barrow upon Soar	3.5 mi
Sileby	5.4 mi
Syston	9.4 mi
South Wigston	10.6 mi

NURSERY SCHOOLS

Lime Tree Nursery	0.1 mi
Westwards Nursery	0.9 mi
Cobden Childrens Centre	0.9 mi
Emmanuel PS	0.9 mi
Shelthorpe Childrens Centre	1.0 mi

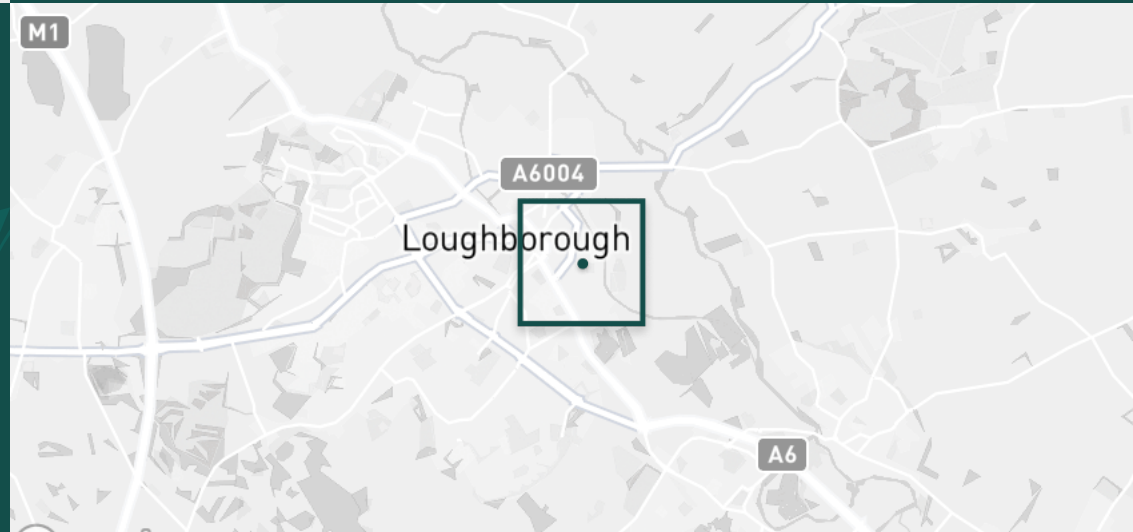
PRIMARY SCHOOLS

Cobden PS	0.3 mi
Fairfield Preparatory Sch	0.4 mi
Loughborough Grammar Sch	0.7 mi
Loughborough High Sch	0.7 mi
Rendell Primary School	0.8 mi

HIGH SCHOOLS

Loughborough Grammar Sch	0.7 mi
Loughborough High Sch	0.7 mi
Limehurst Academy	0.9 mi
Our Lady's Convent Sch	1.0 mi
Loughborough College	1.6 mi

Discover
Loughborough



- ✓ Two Double Bedrooms
- ✓ Modern Apartment
- ✓ Furnished
- ✓ Close to Town Centre
- ✓ Ensuite
- ✓ Available July





Master Bedroom



Ensuite



Bedroom Two



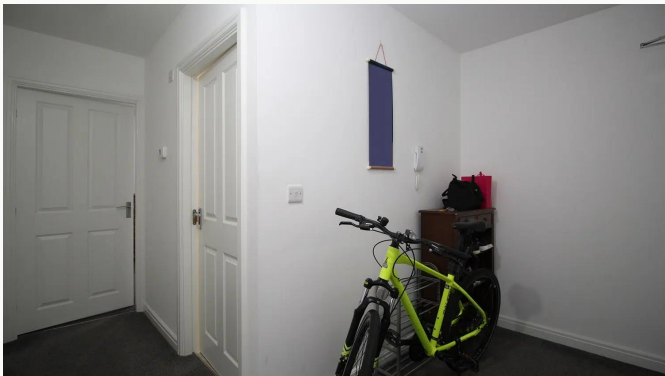
Bedroom Two



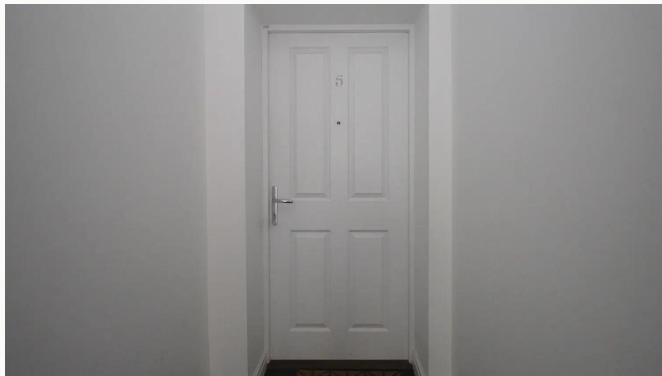
Bedroom Two



Bathroom



Hallway



Apartment Entrance



Block Entrance



Car Park



Henderson Way

Available
From 01/07/2024

Comes
Furnished

Bedrooms
2

Receptions
1

Bathrooms
2

Parking
Allocated

Postcode
LE11 1SS

Rent
£975 pcm

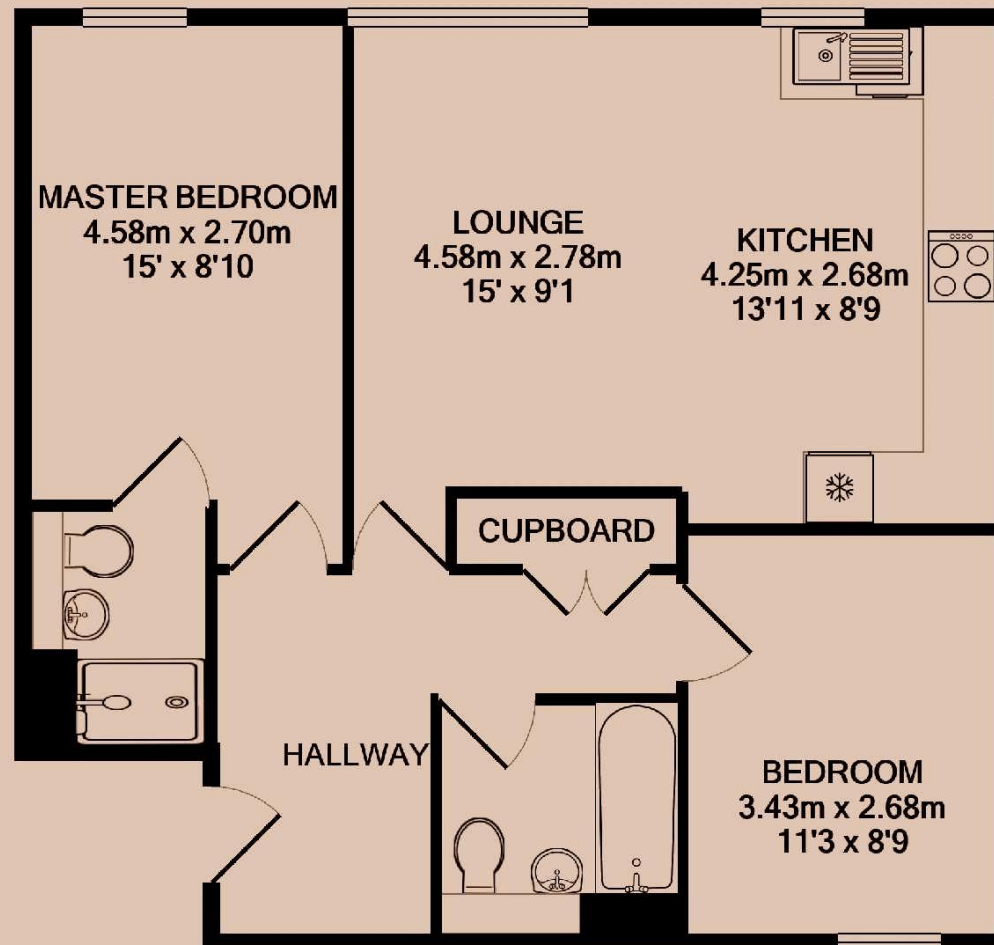
Deposit
£1,120

EPC
85 | B

Council Tax Band
B

ID
#13390

Updated
29/05/2024



Have a property like this? Let's work together.

Design and marketing are at the heart of our approach. With most people now looking for property online, we can get our clients' properties in front of as many people as the most prominent national agents. Where we differ is in the quality of our work. We create stunning digital particulars that highlight the individual attributes of every property we market, with videos and floor plans as standard.



OUR OFFICE
7 Biggin Street
Loughborough, LE11 1UA

CONTACT US
01509 320 320
let@huntleys.net

