

Student

Knighthorpe Road

Loughborough

8 Bed Detached House • LE11 5JR • £137 pppw • £175 Deposit Per Person



Knighthorpe Road, Loughborough

EIGHT DOUBLE bedrooms. Sunroom lounge, THREE washrooms, parking for several cars, OPEN PLAN kitchen/lounge with BREAKFAST BAR, all the kitchen APPLIANCES including AMERICAN style fridge-freezer and a DISHWASHER. BILLS INCLUDED. 2025 - 2026 Academic year.

Kitchen 4.2m (13'9") x 3.6m (11'10")

Stunning peninsula kitchen complete with American style fridge freezer and breakfast bar overlooking the lounge / TV area. All the kitchen appliances you need are included.

Lounge 5m (16'5") x 2.9m (9'6")

Spacious lounge with oversized sofas, flat screen TV. The open plan layout to the kitchen and Breakfast bar makes this a great social space.

Bedrooms x8

All the bedrooms in this house are good sized double rooms fully furnished with double beds, side tables, desks, chairs, wardrobes and chests of draws. The rooms are decorated in a variety of colours, all of which are double glazed and centrally heated.

Garden

Private and low maintenance rear garden with decking and lawn. Great for BBQs in the summer. Convenient side access makes this a great place to secure bikes.

Parking

Driveway parking for several cars to the front of the property with further space available on road without restriction.

Utilities

Bills Included.

Heating

Gas fired central heating.

Glazing

Modern, good quality, uPVC double glazing.

Bathroom 2.9m (9'6") x 1.8m (5'11")

Bathroom <i>2.9m (9'6") x 1.8m (5'11")</i>

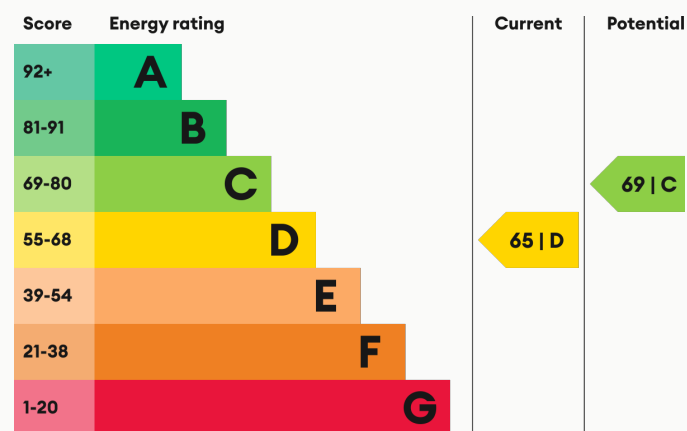
Shower room 3.4m (11'2") x 2m (6'7")

Contemporary three piece shower suite with electric shower and heated towel rail.

Ensuite

A recently installed ensuite shower room, accessed via a ground floor bedroom. Includes a walk-in shower, sink and toilet.

Energy Performance



We aim to make our particulars both accurate and reliable. However they are not guaranteed; nor do they form part of an offer or contract. If you require clarification on any points then please contact us, especially if you are traveling some distance to view. All measurements are to widest point.



Kitchen



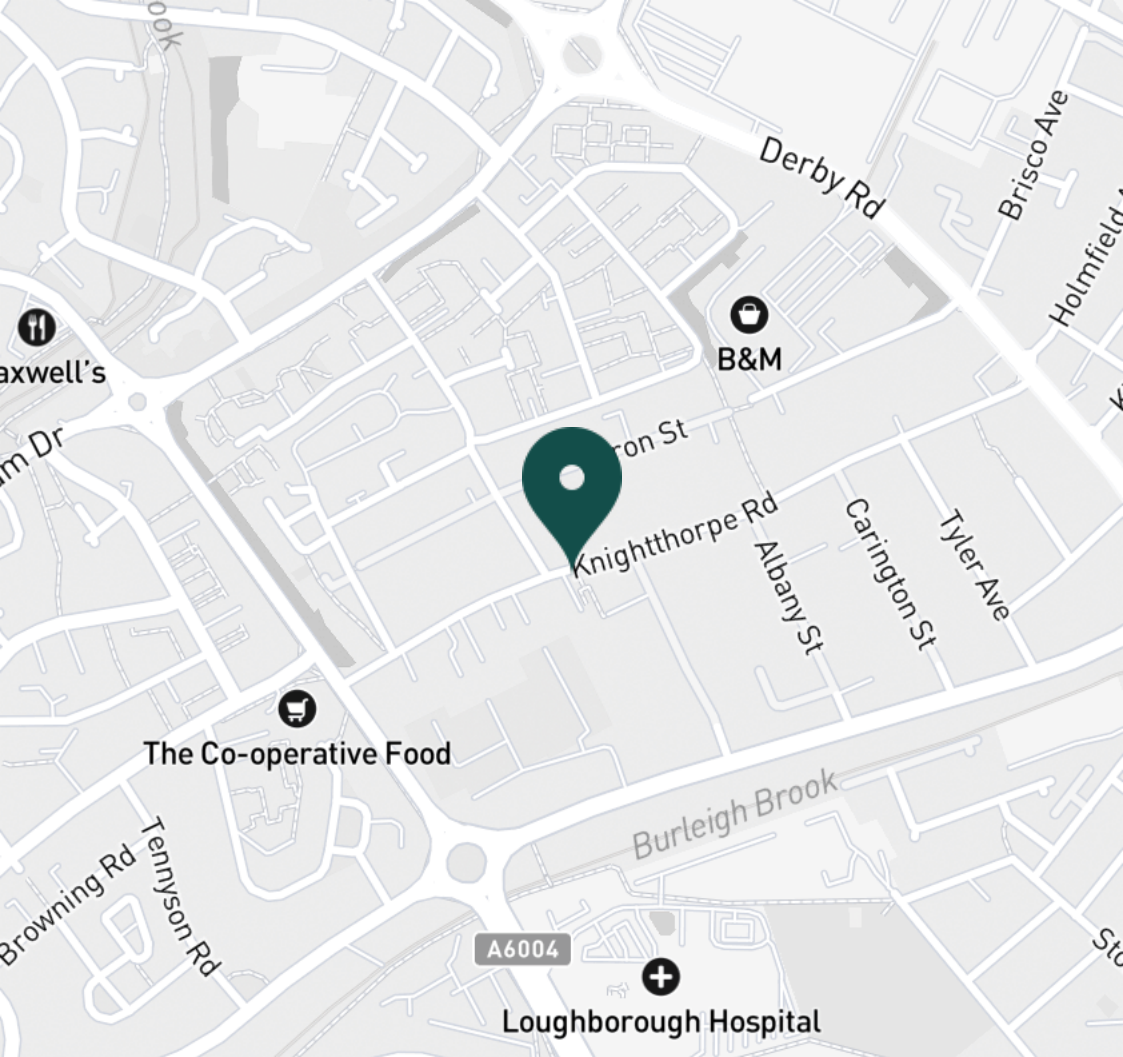
Sun Room



Sun Room



Sun Room



SUPERMARKETS

Co-op Food Knightthorpe Rd	0.2 mi
Lidl Loughborough	0.6 mi
Morrisons Loughborough	0.7 mi
Aldi Loughborough	0.9 mi
Tesco Superstore Loughborough	1.0 mi

GYMS

Loughborough University Pool	0.9 mi
Anytime Fitness Loughborough	0.9 mi
Loughborough Sport	0.9 mi
Radmoor Centre	1.0 mi
PureGym Loughborough	1.0 mi

TRAIN STATIONS

Loughborough	1.7 mi
Barrow upon Soar	4.9 mi
Sileby	6.7 mi
East Midlands Parkway	9.3 mi
Long Eaton	11.4 mi

NURSERY SCHOOLS

Robert Bakewell Playgroup	0.5 mi
Little House Day Nursery	0.6 mi
Kingscliffe Day Nursery	0.9 mi
Loughborough Campus Nursery	1.0 mi
Babblebrooke Day Nursery	1.0 mi

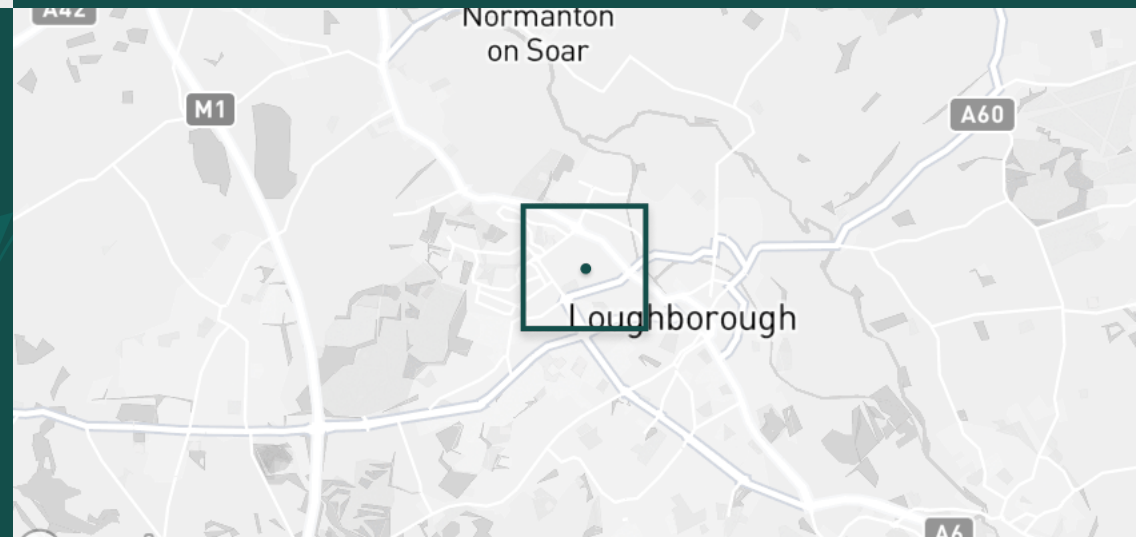
PRIMARY SCHOOLS

Robert Bakewell PS	0.6 mi
Thorpe Acre Junior Sch	0.8 mi
Ashmount Sch	1.1 mi
St Marys Catholic PS	1.1 mi
Booth Wood PS	1.2 mi

HIGH SCHOOLS

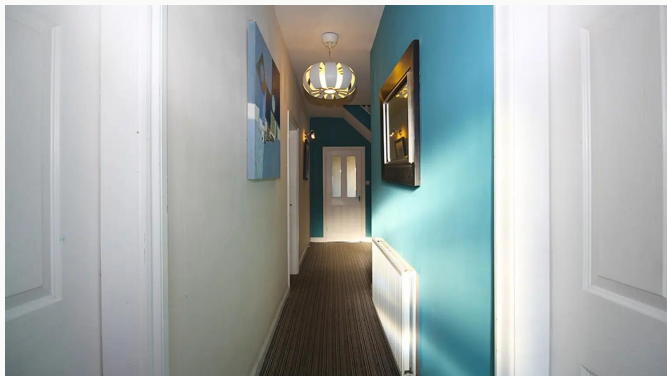
The Garendon High Sch	0.9 mi
De Lisle Catholic Science C	0.9 mi
Loughborough College	1.0 mi
Lboro Uni School Of The Arts	1.0 mi
Charnwood College	1.1 mi

Discover
Loughborough

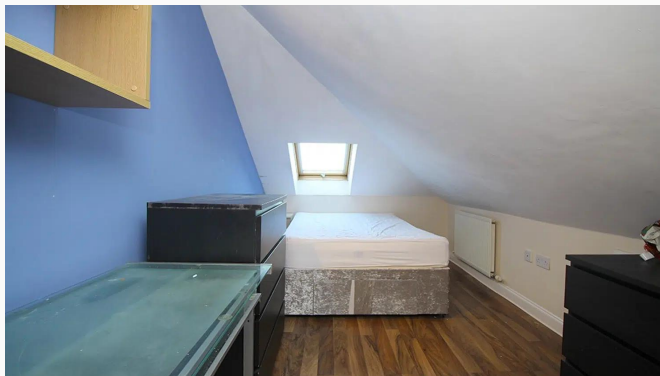


- ✓ Bills included
- ✓ Fully Furnished
- ✓ Eight Double Bedrooms
- ✓ Three Washrooms
- ✓ Plenty of Parking
- ✓ CCTV security

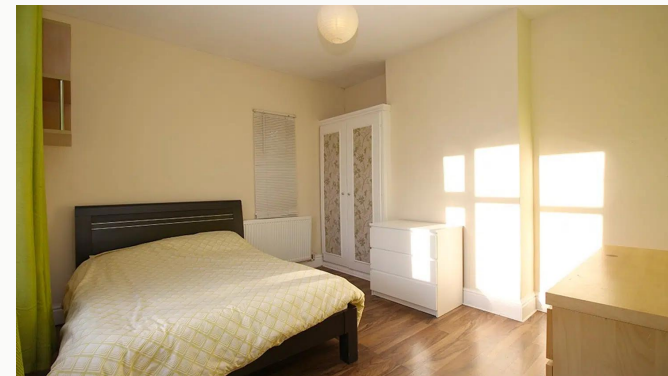




Landing



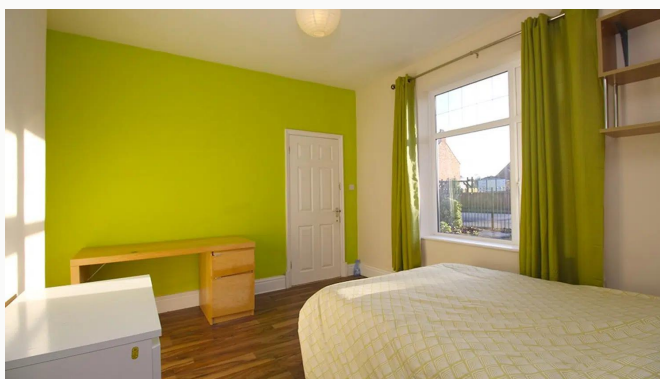
Bedroom



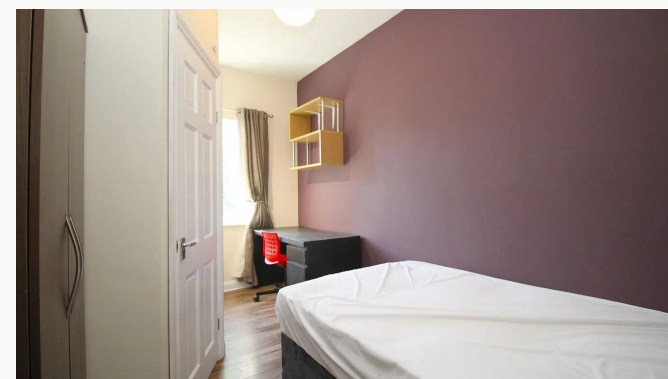
Bedroom



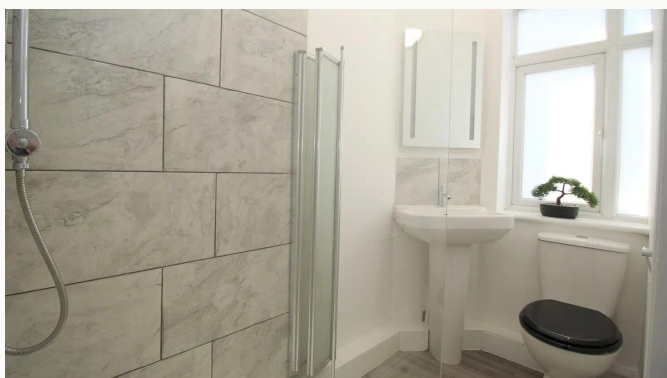
Bedroom



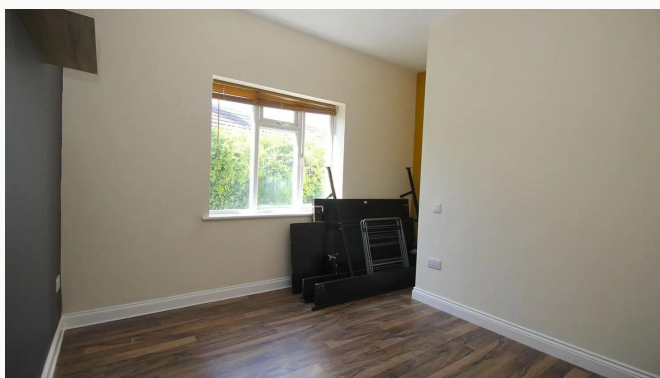
Bedroom



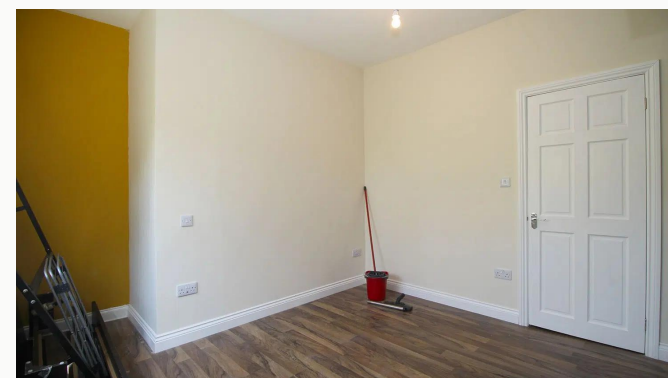
Bedroom



Ensuite



Bedroom



Bedroom



Bathroom



Bathroom



Knightthorpe Road



Garden



Garden



Garden



Garden

Available
From 22/08/2025

Comes
Furnished

Bedrooms
8

Receptions
1

Bathrooms
3

Parking
Driveway

Postcode
LE11 5JR

Rent
£137 pppw

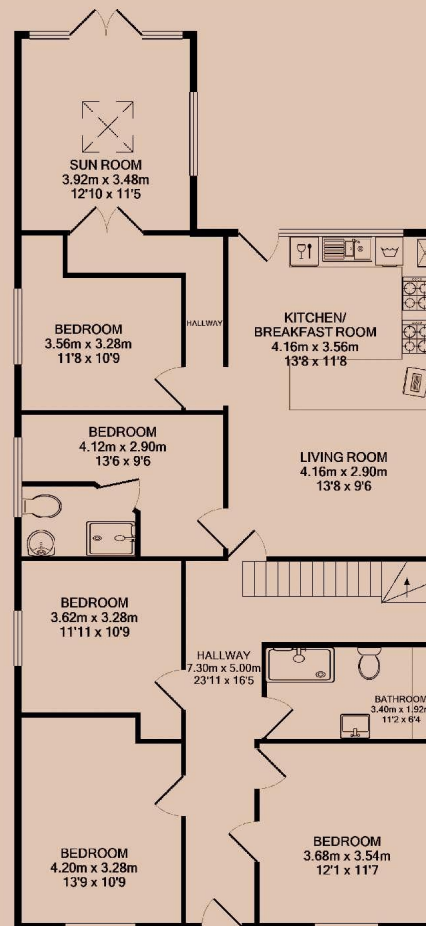
Deposit
£1,400

EPC
65 | D

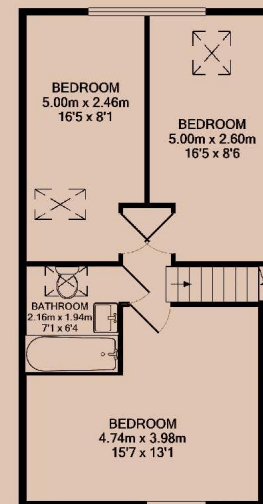
Council Tax Band
C

ID
#2337

Updated
18/10/2024



GROUND FLOOR



1ST FLOOR

Have a property like this? Let's work together.

Design and marketing are at the heart of our approach. With most people now looking for property online, we can get our clients' properties in front of as many people as the most prominent national agents. Where we differ is in the quality of our work. We create stunning digital particulars that highlight the individual attributes of every property we market, with videos and floor plans as standard.



OUR OFFICE
7 Biggin Street
Loughborough, LE11 1UA

CONTACT US
01509 320 320
let@huntleys.net

