



Letwell House Charingworth, Winchcombe, Cheltenham, GL54 5JS

£3,650 Per month

TO LET



- Five Double Bedrooms
- Four Bathrooms
- Three Generous Reception Rooms
- Exclusively Private
- Large Double Garage & Gated Parking
- Landscaped Gardens (Gardening Included)
- Mains Gas Central Heating
- Wood Burning Stove
- Council Tax Band - H
- EPC Rating - C

THE PROPERTY

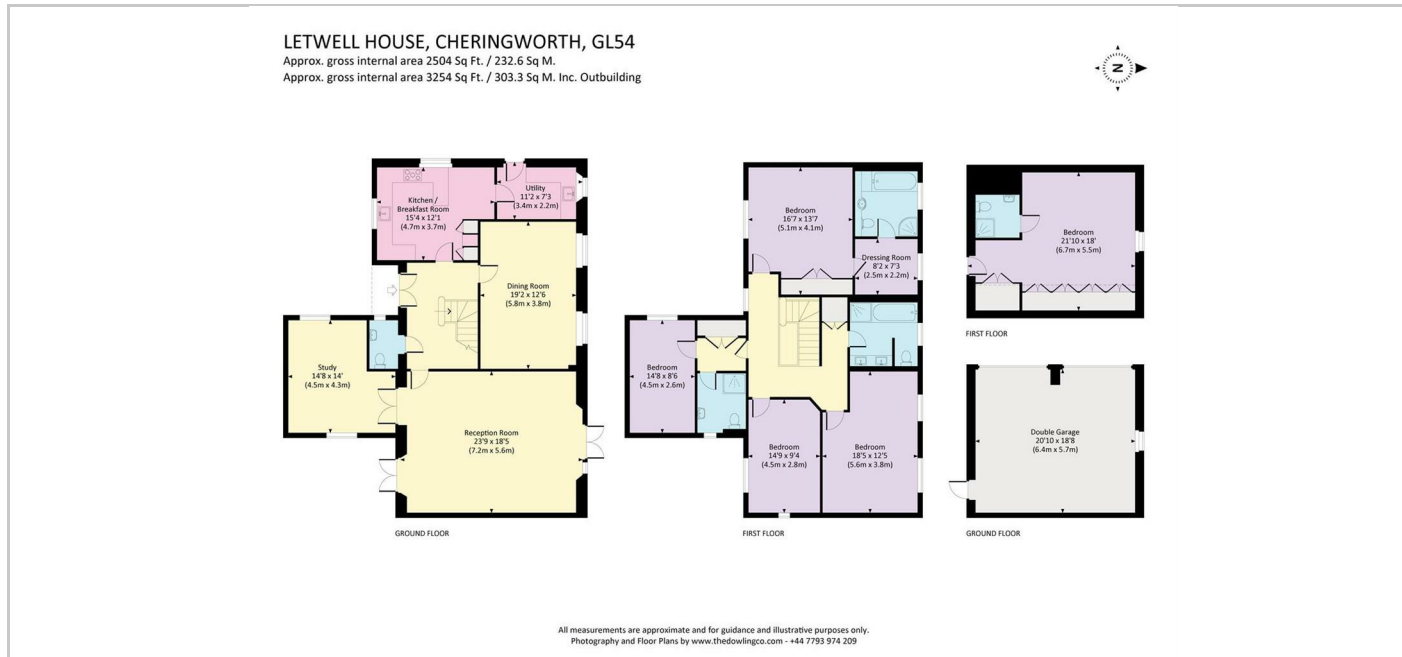
An executive standard, five double bedroom, detached house located within a private estate on the edge of Winchcombe, with good access to Cheltenham in one direction and Broadway in the other.

The accommodation briefly comprises an entrance hall with cloakroom and leads into a kitchen/breakfast room which has a mixture of floor and wall mounted units with hob, oven dishwasher and American style fridge freezer, separate utility room with washing machine and tumble dryer and side access to the garden. There is a lovely dining room with views to the rear garden, a spacious drawing room with French doors to the front and rear of the house. A separate study completes the ground floor which can also lend itself to a second sitting room or children's play room. Upstairs, there are four bedrooms in total and a family bathroom. Two of the bedrooms have en suite shower rooms and dressing rooms. The two remaining bedrooms share the family bathroom. The property is warmed by gas central heating throughout.

Outside, there is a substantial garden with an expansive plot which wraps around the house and is fully maintained as part of the rental agreement. The rear garden has a stunning feature wall which ensures privacy to the garden which has a mixture of mature plants, trees and shrubs. To the front of the house is a detached garage with additional living space / fifth bedroom / study above it with shower room. There is ample parking for several cars.

Tucked away in the folds of the Cotswold Hills, the thriving Anglo-Saxon market town of Winchcombe is well known for its warm toned Cotswold stone cottages, tea shops, good local amenities and traditional medieval architecture..

Winchcombe has a wide range of facilities to include a number of art and antique shops, pubs, restaurants, butchers, bakers and greengrocers, a parish church and excellent medical and dental services. High Street and boutique shopping can be found in Broadway Stow-on-the-Wold and Cheltenham.



SITUATION

Directions

First Floor Offices, 14-15 Montpellier Arcade Montpellier Street, Cheltenham, Gloucestershire, GL50 1SU
 Tel: 01242 350022 Email: info@Regency-Residential.co.uk <https://www.regency-residential.co.uk>