

**PLOMER
FOUR
BEDROOM
HOME**

BLOOR HOMES



A four bedroom detached home with spacious lounge and fantastic open plan kitchen / dining / family area featuring a utility and storage cupboard and French doors leading to the garden. Upstairs there are four double bedrooms with two of them benefitting from fitted wardrobes and two featuring an en suite shower room.

PLOMER

A BEAUTIFUL FOUR
BEDROOM DETACHED HOME

**PLOMER
FOUR
BEDROOM
HOME**

FIRST FLOOR:

BEDROOM 1
2.77m x 3.91m
9'1" x 12'10"

EN SUITE

BEDROOM 2
2.85m x 4.56m
9'4" x 14'11"

EN SUITE

BEDROOM 3
2.85m x 2.98m
9'4" x 9'9"

BEDROOM 4
3.42m x 2.98m
11'3" x 9'9"

BATHROOM

GROUND FLOOR:

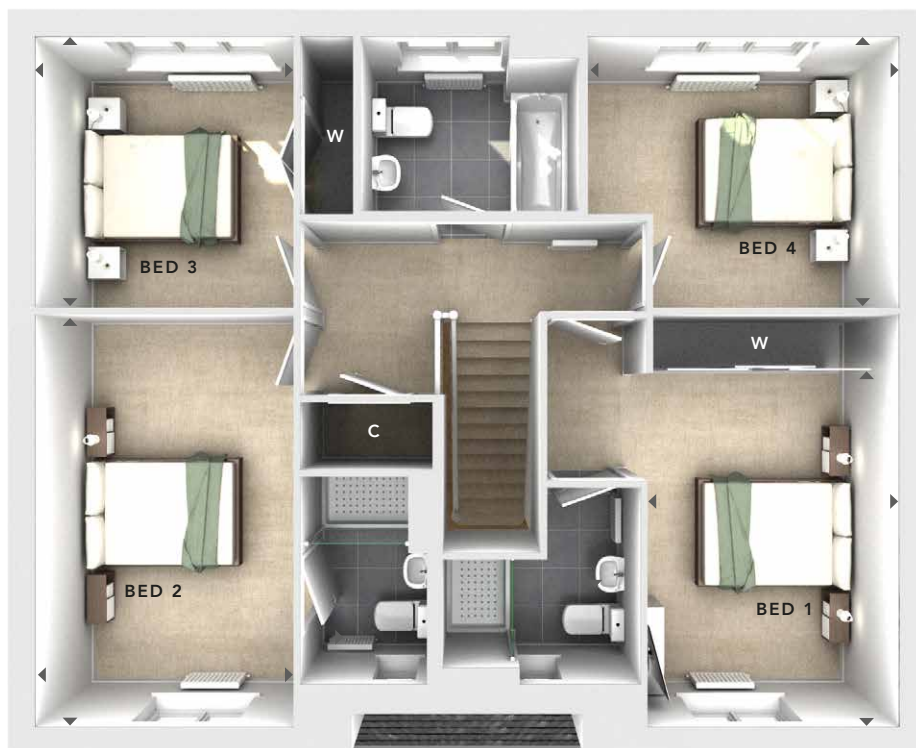
LOUNGE
3.81m x 5.24m
12'6" x 17'2"

**KITCHEN / DINING /
FAMILY**
5.59m x 7.62m
18'4" x 25'0"

STORAGE CUPBOARD

STUDY
2.66m x 2.30m
8'9" x 7'7"

CLOAKS



**FIRST
FLOOR**



**GROUND
FLOOR**

- W** - Fitted Wardrobes
- C** - Storage Cupboard
- U** - Utility Cupboard
- △ - External Access
- ◀ ▶ - Measurement Points

© Bloor Homes • NSS 482R 4.6

BLOOR HOMES

These particulars are intended as a preliminary guide for prospective purchasers and should not be relied upon. The elevational treatment for individual house types shows a typical arrangement. Details of materials and design treatments may vary. Any artist impressions shown are not intended to represent any particular plot. Purchasers are advised to inspect the layout plan to establish the arrangement of the house and surrounding property. Internal layouts show a general arrangement which may vary from plot to plot. Room sizes given are approx. overall finished room sizes and subject to normal building tolerances (i.e. ± 75mm). In all instances purchasers are advised to inspect plot specific information available from our sales team. Nothing in these particulars or verbal assurance shall form or constitute part of any contract, and are given without any responsibility on behalf of Bloor Homes.