

DORNEYWOOD
FOUR
BEDROOM
HOME

BLOOR HOMES



A four bedroom detached home comprising a spacious lounge and impressive kitchen / dining / family area with a bay window, and French doors opening onto the rear garden. Downstairs also includes a utility, study and cloakroom. Upstairs boasts four double bedrooms and the family bathroom, complete with a bath and separate shower enclosure. Bedrooms 1 and 2 feature en-suite shower rooms with the master benefitting from fitted wardrobes.

DORNEYWOOD

AN OUTSTANDING FOUR
BEDROOM FAMILY HOME

**DORNEYWOOD
FOUR
BEDROOM
HOME**

FIRST FLOOR:

BEDROOM 1
3.08m x 4.71m
10'1" x 15'6"

EN SUITE

BEDROOM 2
3.14m x 2.69m
10'4" x 8'10"

EN SUITE

BEDROOM 3
3.30m x 3.98m
10'10" x 13'0"

BEDROOM 4
3.23m x 3.39m
10'7" x 11'2"

BATHROOM

GROUND FLOOR:

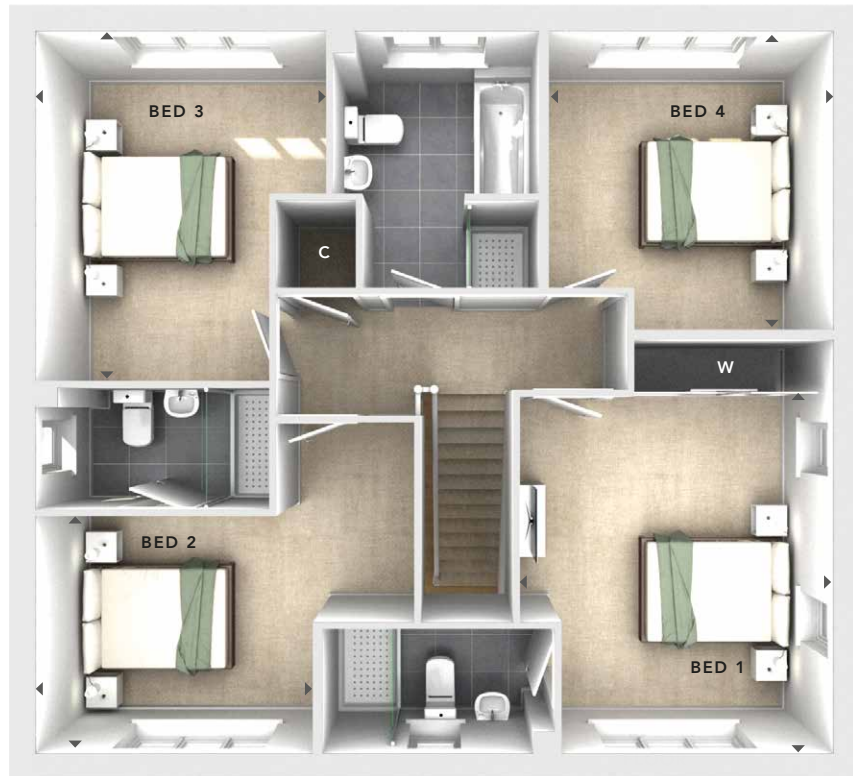
LOUNGE
3.48m x 4.78m
11'5" x 15'8"

**KITCHEN / DINING /
FAMILY**
9.07m x 3.95m
29'9" x 13'0"

STUDY
3.14m x 2.15m
10'3" x 7'1"

UTILITY
1.99m x 1.89m
6'6" x 6'2"

CLOAKS



**FIRST
FLOOR**



**GROUND
FLOOR**

- W** - Fitted Wardrobes
- C** - Storage
- △ - External Access
- ◀▶ - Measurement Points

496 NSS BRICK 4.5

BLOOR HOMES

These particulars are intended as a preliminary guide for prospective purchasers and should not be relied upon. The elevational treatment for individual house types shows a typical arrangement. Details of materials and design treatments may vary. Any artist impressions shown are not intended to represent any particular plot. Purchasers are advised to inspect the layout plan to establish the arrangement of the house and surrounding property. Internal layouts show a general arrangement which may vary from plot to plot. Room sizes given are approx. overall finished room sizes and subject to normal building tolerances (i.e. ± 75mm). In all instances purchasers are advised to inspect plot specific information available from our sales team. Nothing in these particulars or verbal assurance shall form or constitute part of any contract, and are given without any responsibility on behalf of Bloor Homes.