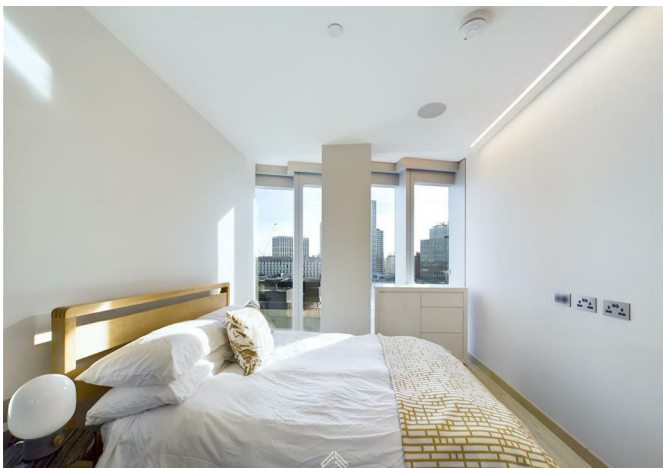




23222 International Way, Manhattan Loft Gardens, London, E20 1GQ
£3,250



23222 International Way, Manhattan Loft Gardens, London, E20 1GQ

£3,250

A stunning two bedroom property located on the 14th floor of one of East London's most iconic and architecturally celebrated buildings.

Featuring a spacious dual aspect, open plan living area, this property is overrun with light from the floor to ceiling windows throughout. The kitchen is fully fitted with a double fridge and Siemens appliances. Two Bedrooms adorn the south side of the apartment with the master boasting built in storage and an en suite bathroom, the second bedroom is large enough for a double bed with built in storage. A further family bathroom is fully fitted with a bath and overhead rainfall shower.

Other features to the apartment boast underfloor heating, air conditioning, and ceiling speakers in every room for all your entertainment needs,

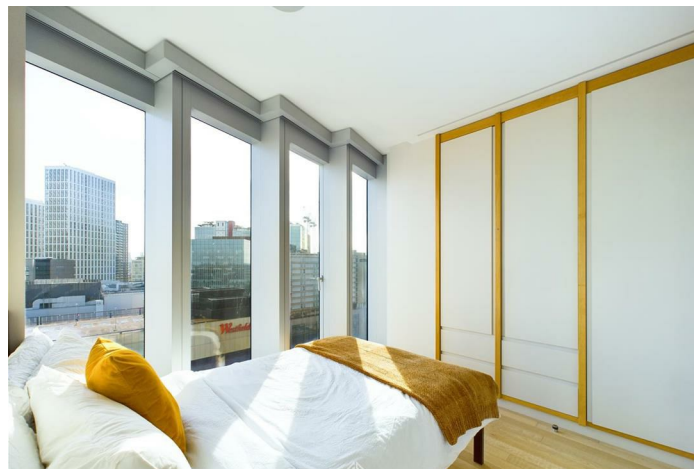
Located in the beautiful Olympic Park, residents of Manhattan Loft Gardens also benefit from discounts in the hotel restaurants and bars below, full use of the gym on site, and 24 hour concierge.

Transport links to Central London are unparalleled with access to the Elizabeth Line, Central Line, and Jubilee line.

Description



Situation

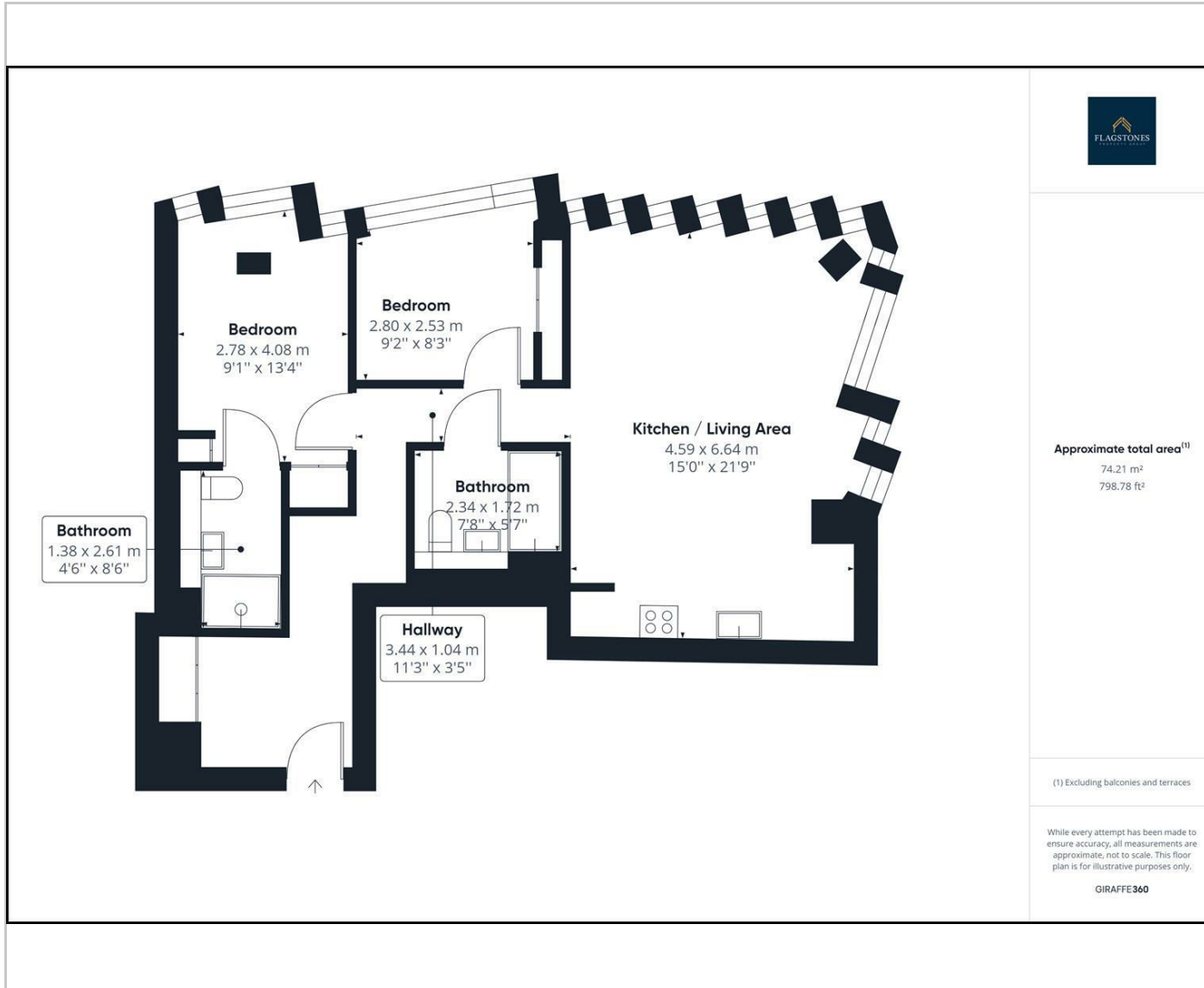


Furnished

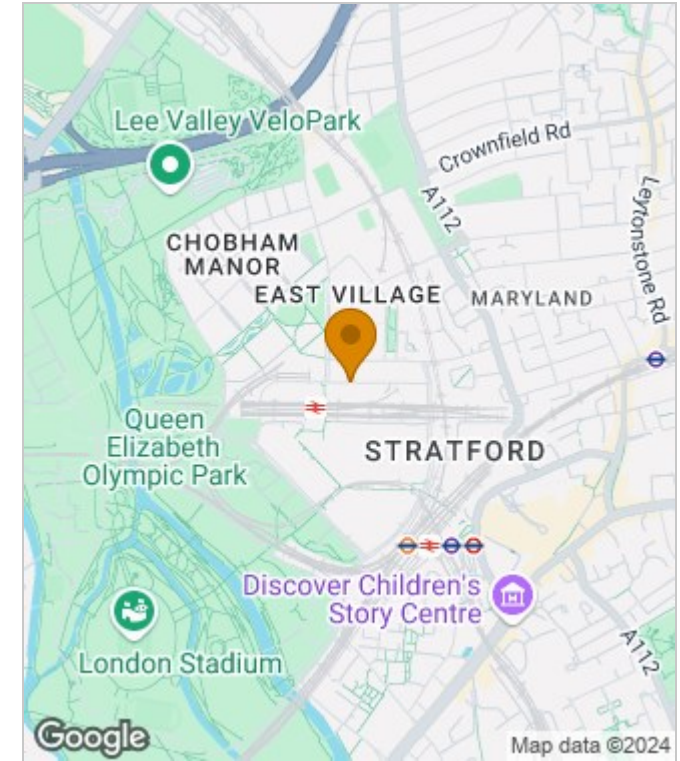
Council Tax Band:

Available:

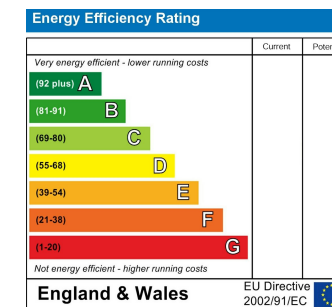
Floor Plans



Area Map



Energy Performance Graph



These particulars, whilst believed to be accurate are set out as a general outline only for guidance and do not constitute any part of an offer or contract. Intending purchasers should not rely on them as statements of representation of fact, but must satisfy themselves by inspection or otherwise as to their accuracy. No person in this firm's employment has the authority to make or give any representation or warranty in respect of the property.