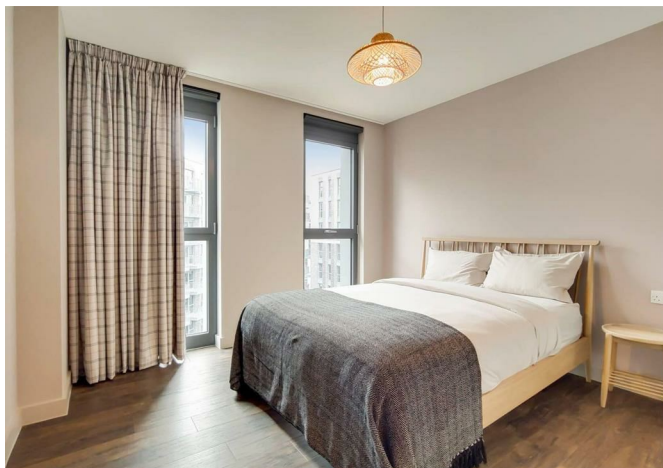


112334 Canada Gardens, First Way, Wembley, HA9 0JD  
£2,920





112334 Canada Gardens, First Way, Wembley, HA9 0JD

£2,920

An urban oasis in the heart of Wembley Park, Canada Gardens offers a refreshing take on city living. Combining the warmth of homely interiors with sleek contemporary design, it's the ideal setting for those seeking a slower, more balanced lifestyle - without compromising on connectivity or convenience.

With over an acre of landscaped green space, a children's play park, and even private allotments, Canada Gardens brings nature to your doorstep in one of London's most vibrant and dynamic neighbourhoods.

Elevated above the buzz of Wembley Park, Canada Gardens offers a peaceful yet connected lifestyle in one of London's most vibrant new districts - just moments from Bread Ahead, Boxpark, Troubadour Theatre and over 70 shops, cafés and restaurants at the London Designer Outlet. Managed by Quintain Living, the award-winning team behind Wembley Park. Photos show a very similar apartment in this building however the exact layout/floor/view may vary. Other incentives available T&Cs apply; see Quintain Living website for details. New residents who move in by 15 Oct 2025 on a minimum 6-month tenancy will receive a £1,000 Amazon voucher, emailed within 40 days of move-in to the lead resident.



## Description

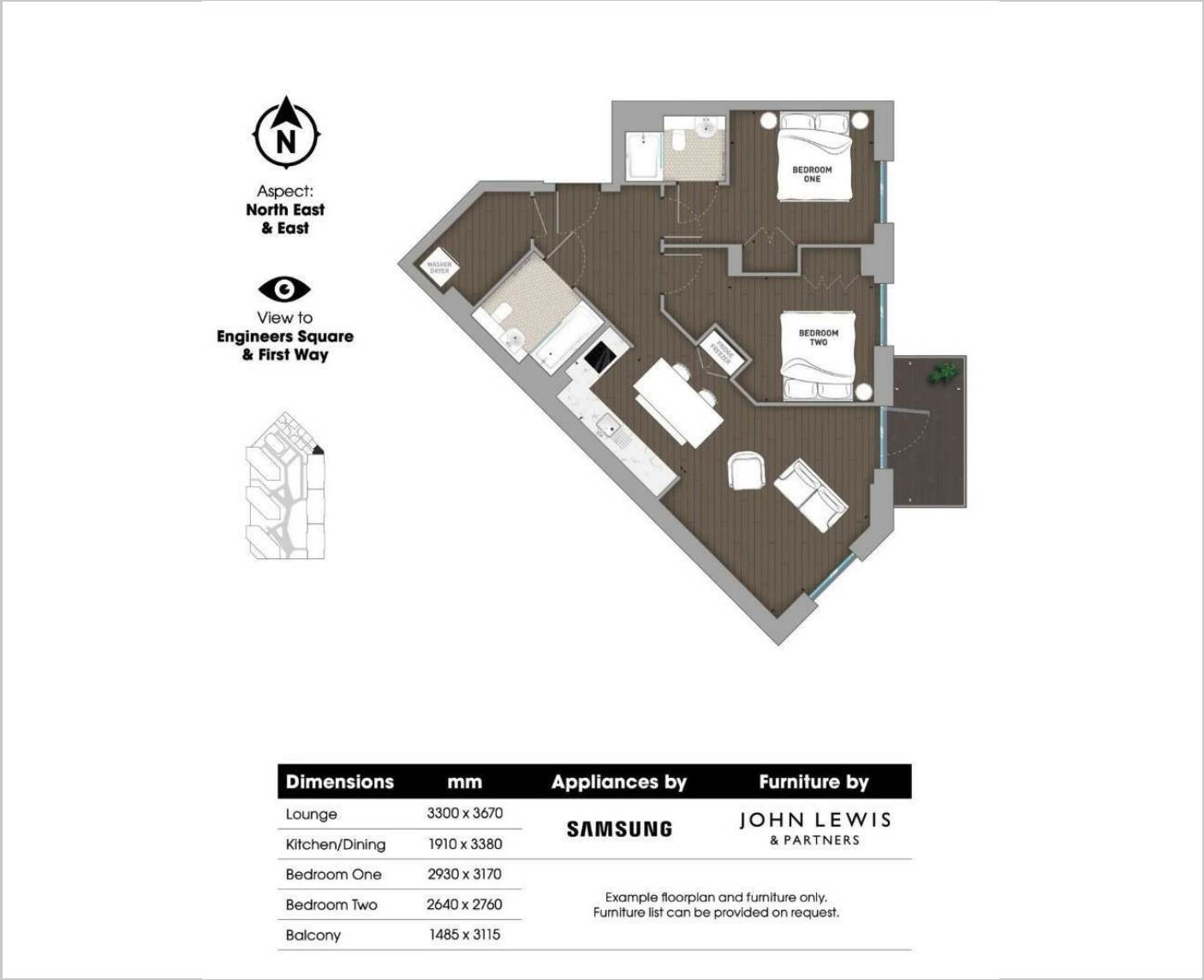


## Situation

Furnished  
Council Tax Band: C  
Available:



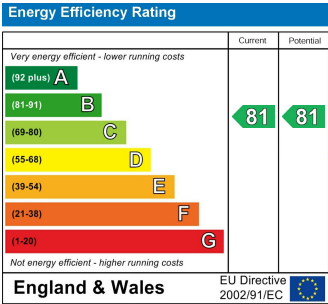
Floor Plans

Example floorplan and furniture only.  
Furniture list can be provided on request.

Area Map



Energy Performance Graph



These particulars, whilst believed to be accurate are set out as a general outline only for guidance and do not constitute any part of an offer or contract. Intending purchasers should not rely on them as statements of representation of fact, but must satisfy themselves by inspection or otherwise as to their accuracy. No person in this firms employment has the authority to make or give any representation or warranty in respect of the property.