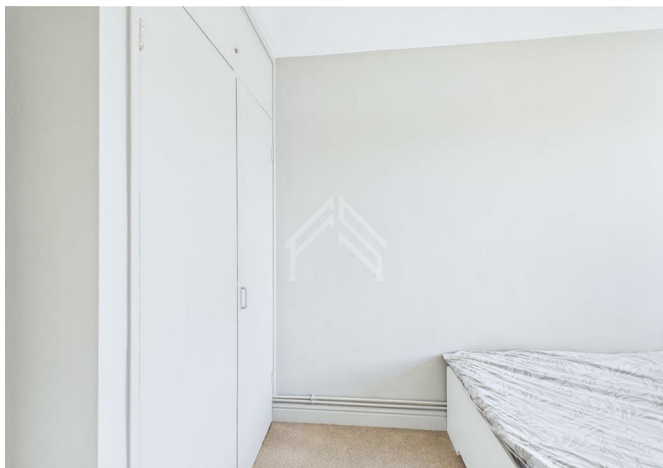




Flat 22, Sawyer House Sawyer House, Kingswood Estate, London, SE21 8QF
£200,000



Flat 22, Sawyer House Sawyer House, Kingswood Estate, London, SE21 8QF

£200,000

Newly launched to the market, this top-floor, one-bed apartment pairs stylish refurbishment with practical perks: lift access, generous built-in storage and a long 118-year lease. Sold chain-free, its running costs stay low with ground rent of just £10 and a £1,737 annual service charge. Set moments from a 24-hour bus route, it offers turnkey living and effortless city connectivity—ideal for first-time buyers and investors.

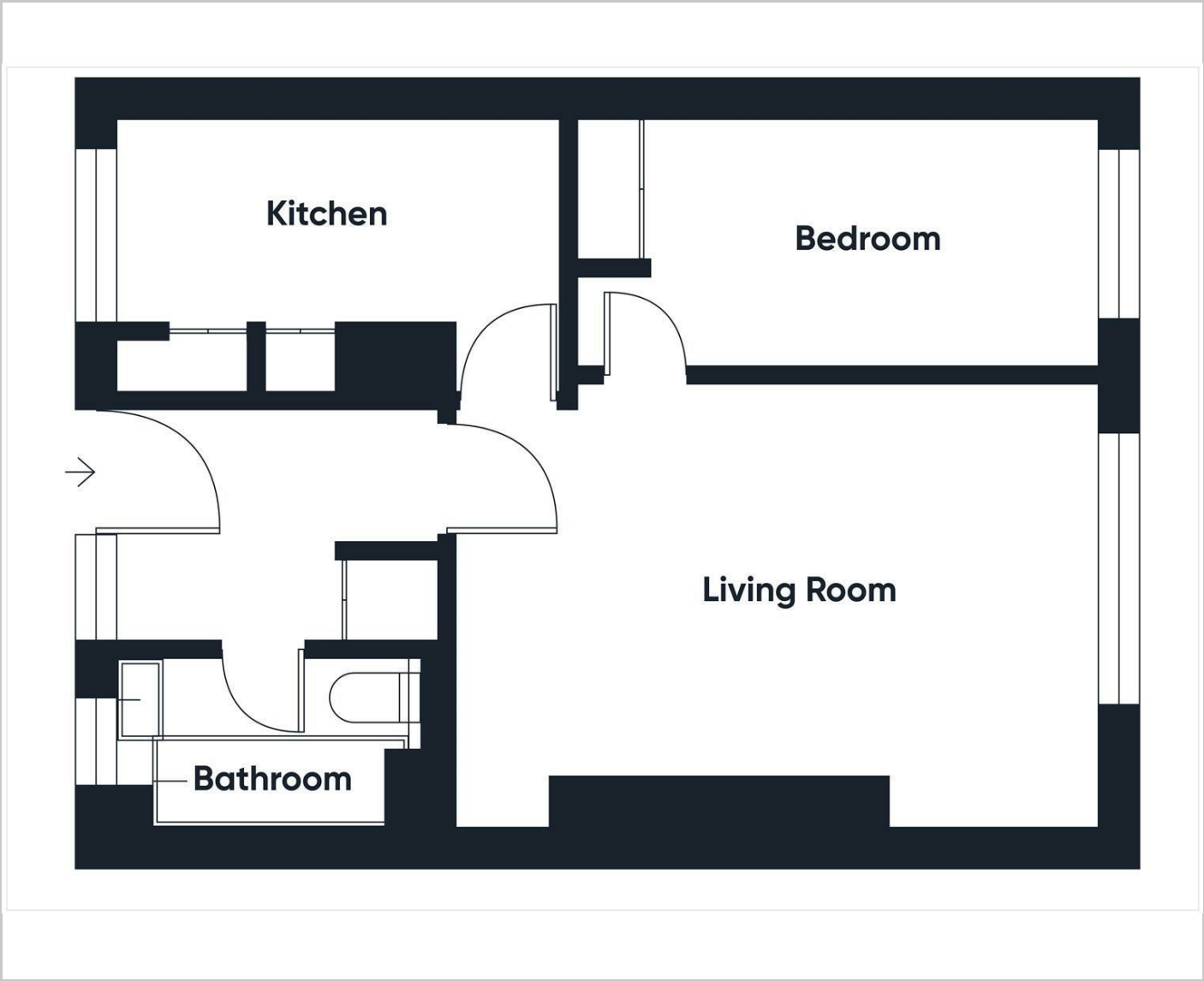
Description

Situation

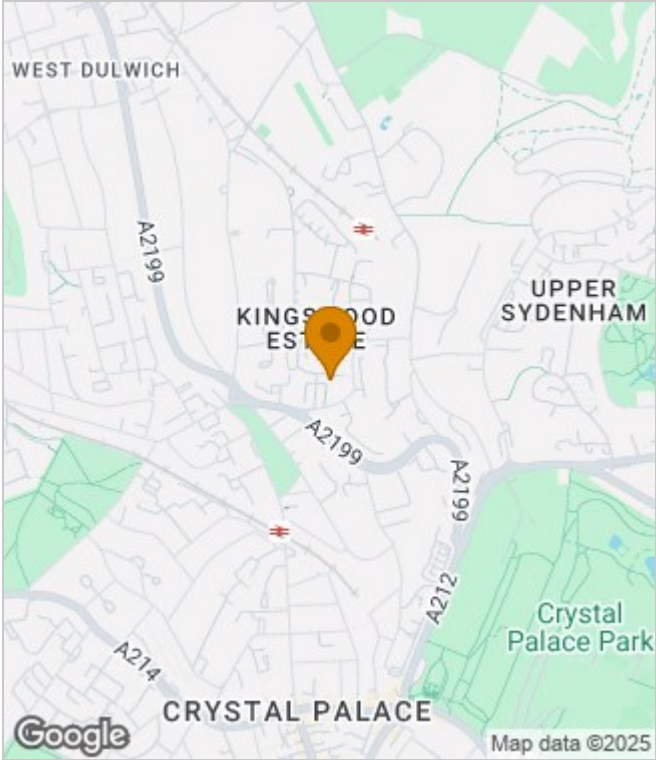
null
Council Tax Band:
Available:



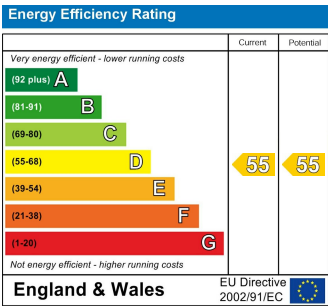
Floor Plans



Area Map



Energy Performance Graph



These particulars, whilst believed to be accurate are set out as a general outline only for guidance and do not constitute any part of an offer or contract. Intending purchasers should not rely on them as statements of representation of fact, but must satisfy themselves by inspection or otherwise as to their accuracy. No person in this firms employment has the authority to make or give any representation or warranty in respect of the property.