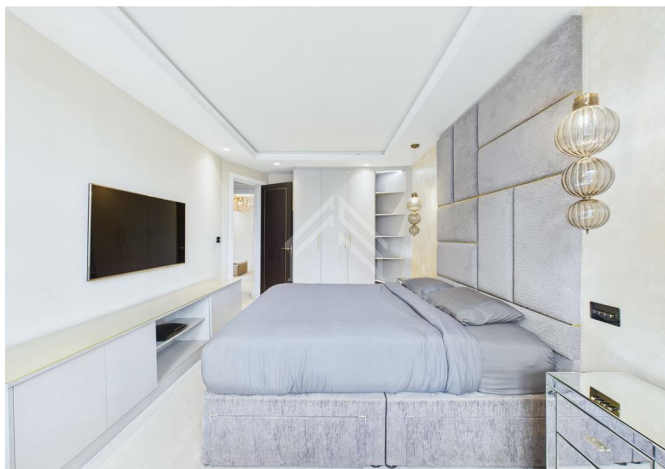




312 Grove End Road, London, NW8 9EP
£3,500



312 Grove End Road, London, NW8 9EP

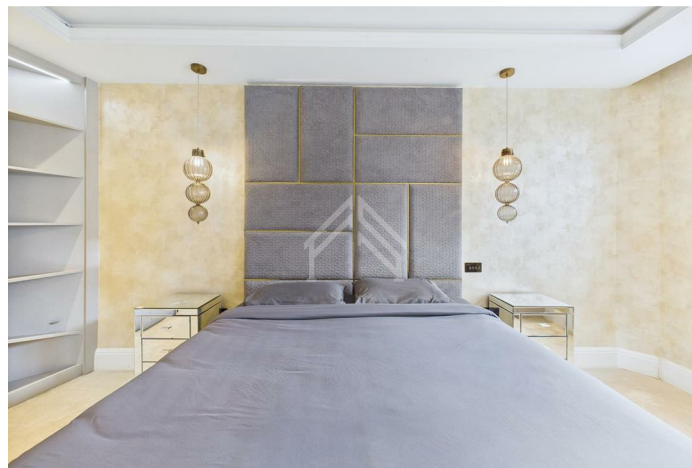
£3,500

Just listed! This sun-filled two-bedroom apartment nestles in a fully secure, concierge-managed building only moments from St John's Wood Station. Bathed in natural light and cleverly designed with plentiful built-in storage, it also grants residents access to beautifully landscaped communal gardens. Everyday convenience is covered by a lift and video-entry system, while inside you'll find a washer/dryer, dishwasher, and move-in-ready essentials—including a kettle, toaster, and microwave.

Description



Situation

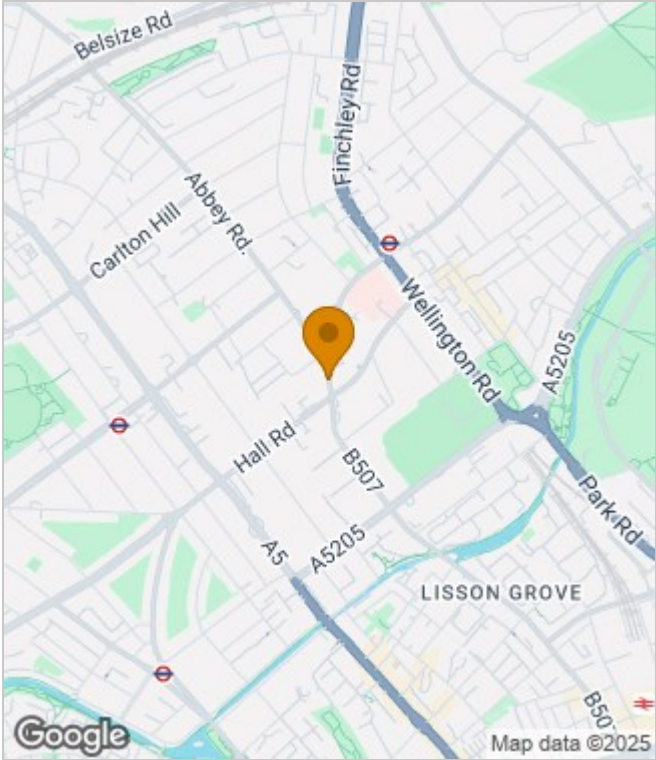


Furnished
Council Tax Band: C
Available:

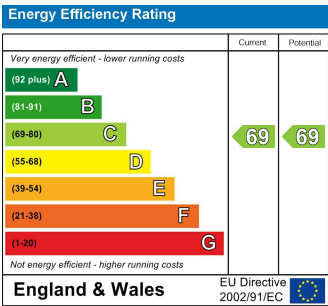
Floor Plans



Area Map



Energy Performance Graph



These particulars, whilst believed to be accurate are set out as a general outline only for guidance and do not constitute any part of an offer or contract. Intending purchasers should not rely on them as statements of representation of fact, but must satisfy themselves by inspection or otherwise as to their accuracy. No person in this firms employment has the authority to make or give any representation or warranty in respect of the property.