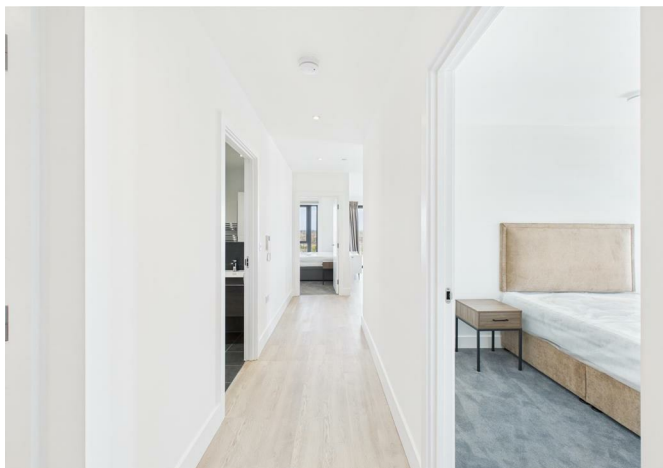




3213444 Acer Point, Ascot Road, Watford, WD18 8AX
£2,160



3213444 Acer Point, Ascot Road, Watford, WD18 8AX

£2,160

Welcome to an exceptional living experience in a newly listed, exclusive development that blends luxury with convenience. This property promises an enriched lifestyle with round-the-clock management services, ensuring peace of mind and security for all residents.

Engage and connect at our regular resident events, designed to enhance community spirit and provide enjoyable social opportunities. Indulge in the comfort of our lounge area where complimentary unlimited coffee awaits, providing a relaxing space for residents to unwind. Price includes 1 month rent free. Stay active with access to a full-sized gym equipped with state-of-the-art facilities.

Each home features a fully-integrated kitchen, boasting Samsung appliances, combining style with functionality. Enjoy the convenience of a quick 19-minute commute from Watford Junction to Euston, making travel for work or pleasure simple and stress-free.

Additionally, we offer flexible leasing options, including no-deposit choices, to make your move as easy as possible.

Description

Situation

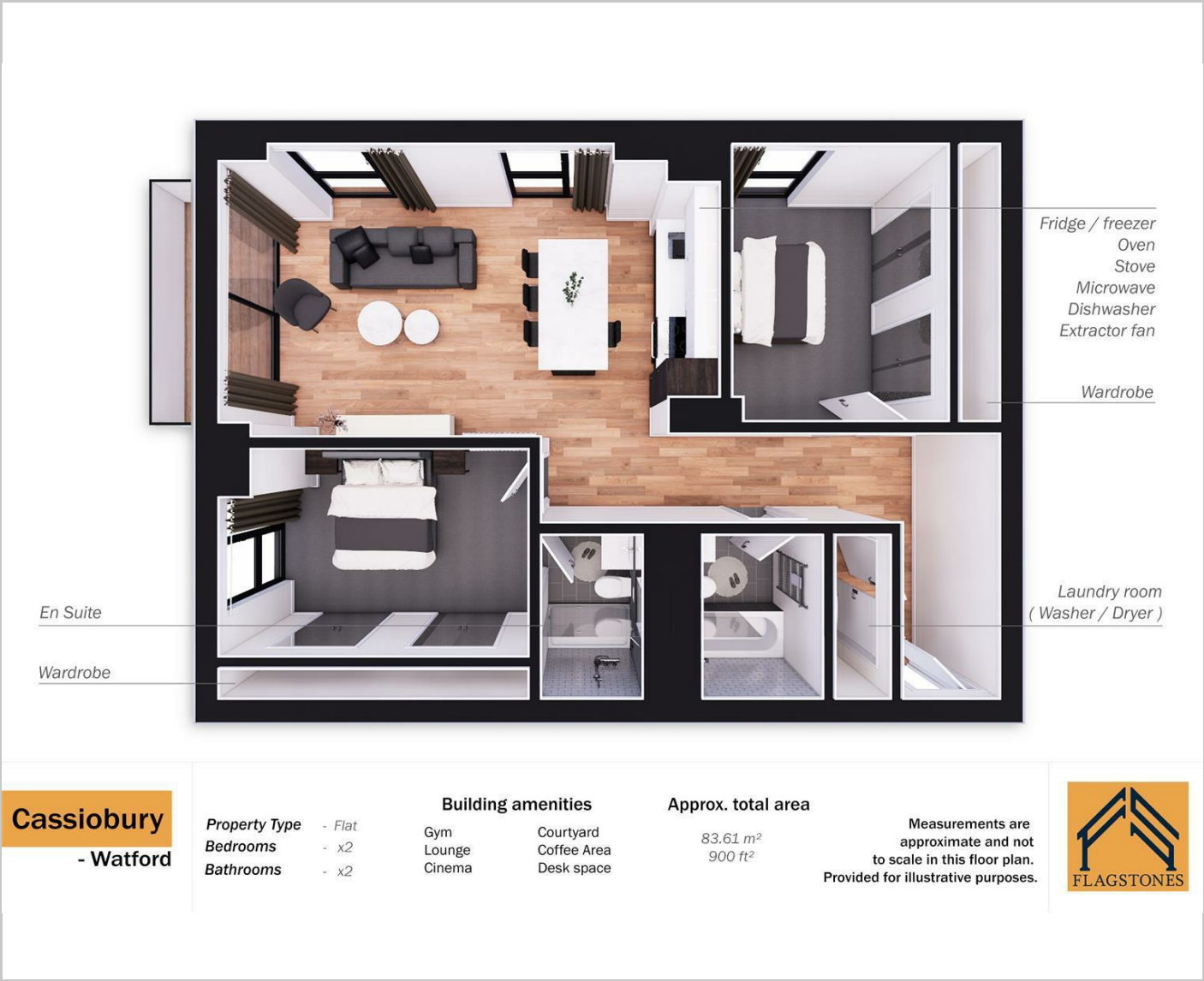
Furnished

Council Tax Band: B

Available:



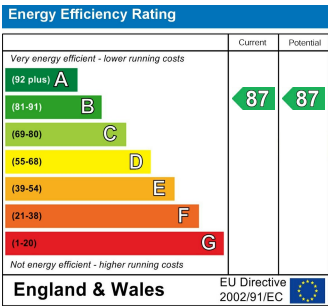
Floor Plans



Area Map



Energy Performance Graph



These particulars, whilst believed to be accurate are set out as a general outline only for guidance and do not constitute any part of an offer or contract. Intending purchasers should not rely on them as statements of representation of fact, but must satisfy themselves by inspection or otherwise as to their accuracy. No person in this firms employment has the authority to make or give any representation or warranty in respect of the property.