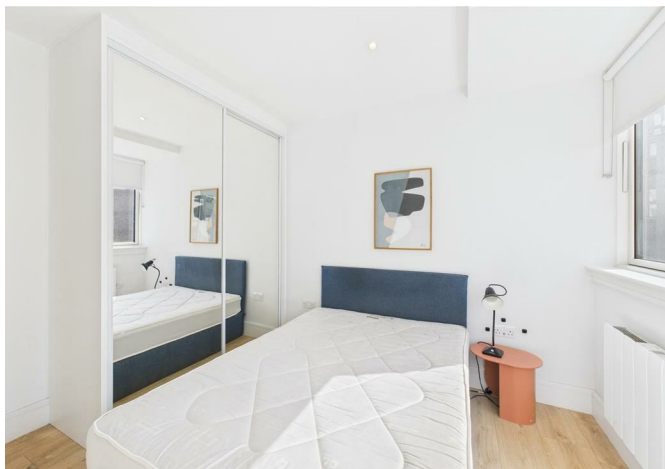




32133312 Olympic Way, Wembley, HA9 0PL  
£1,695



32133312 Olympic Way, Wembley, HA9 0PL

£1,695

Step into the comfort and style of this fully furnished flat, perfectly located just a 2-minute walk from Wembley Park. Experience unparalleled convenience with exclusive amenities including gym facilities, a communal lounge, and a cinema room—perfect for both relaxation and entertainment. Enjoy secure access to your home with a 24/7 concierge service, ensuring peace of mind at any time of the day. The flat offers stunning views of Wembley Stadium, enhancing your living experience with a scenic backdrop. Plus, with Wi-Fi included, you'll be connected and ready from the moment you move in. Don't miss out on making this exceptional place your new home!

**Description**

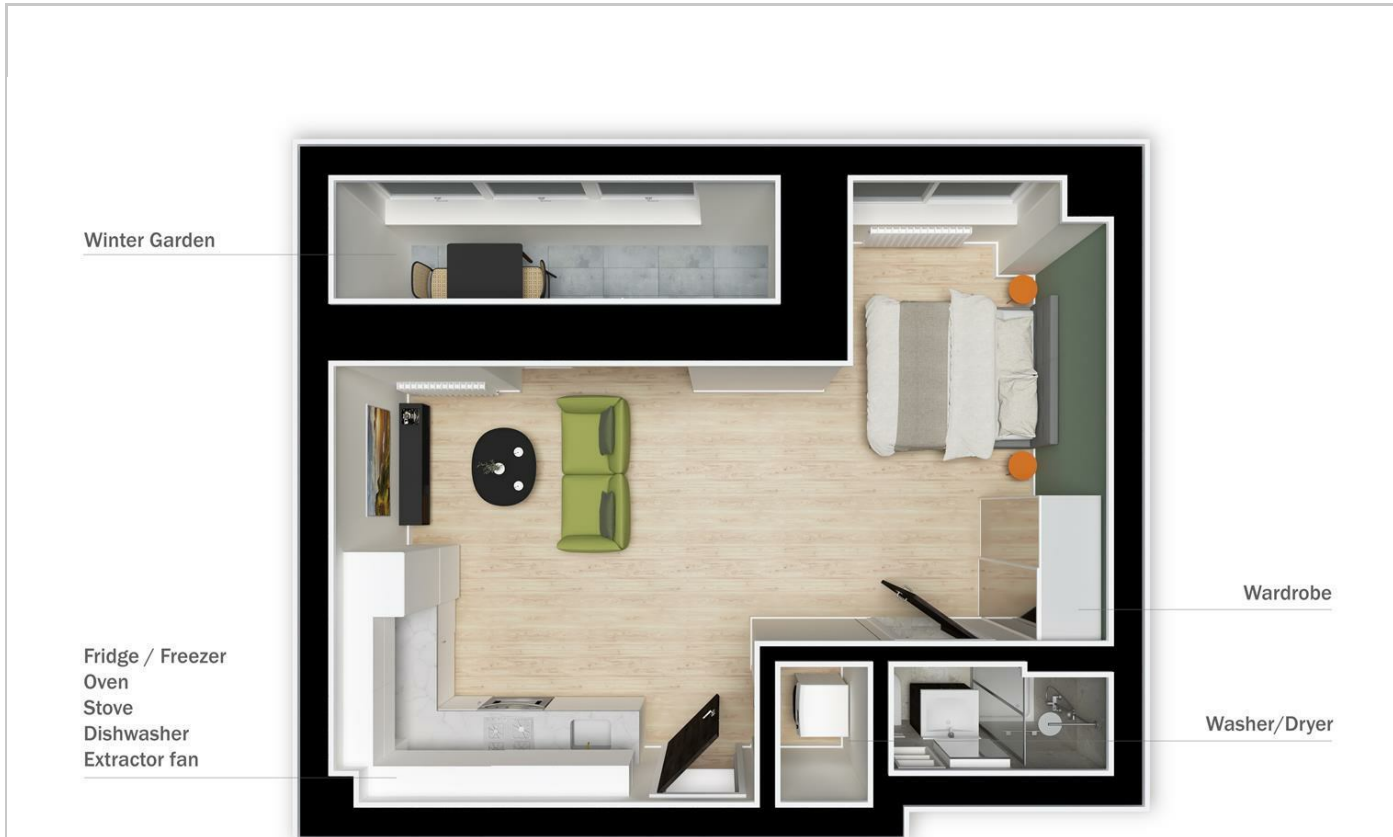


**Situation**



Furnished  
Council Tax Band: C  
Available:

## Floor Plans



**Olympic Way**  
- Wembley Park

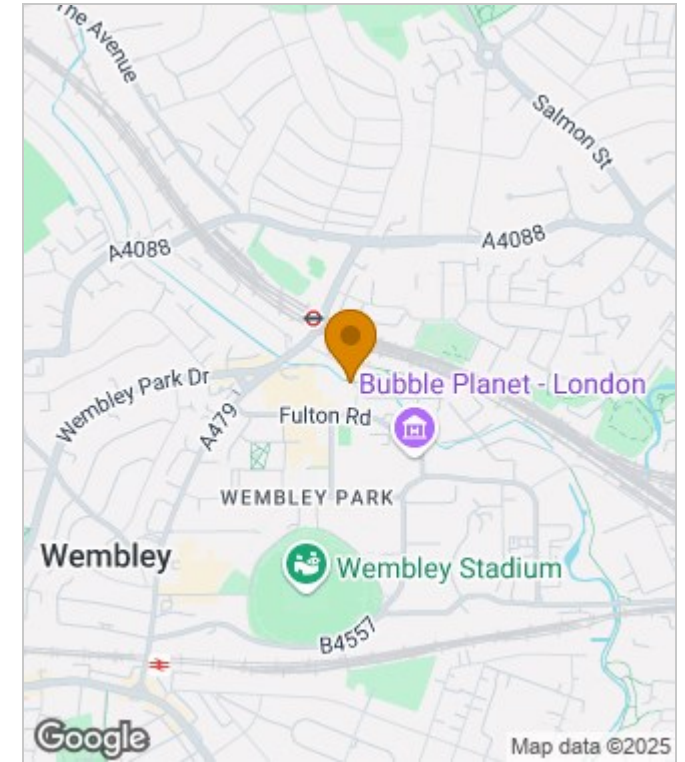
**Property Type** - Studio  
**Bathrooms** - x1

**Approx. total area**  
45.16 m<sup>2</sup>  
486.05 ft<sup>2</sup>

*Measurements are approximate and not to scale in this floor plan. Provided for illustrative purposes.*



## Area Map



## Energy Performance Graph

Energy Efficiency Rating		Current	Potential
Very energy efficient - lower running costs			
(92 plus) A			
(81-91) B		82	82
(69-80) C			
(55-68) D			
(39-54) E			
(21-38) F			
(1-20) G			
Not energy efficient - higher running costs			
<b>England &amp; Wales</b>		EU Directive 2002/91/EC	

These particulars, whilst believed to be accurate are set out as a general outline only for guidance and do not constitute any part of an offer or contract. Intending purchasers should not rely on them as statements of representation of fact, but must satisfy themselves by inspection or otherwise as to their accuracy. No person in this firm's employment has the authority to make or give any representation or warranty in respect of the property.