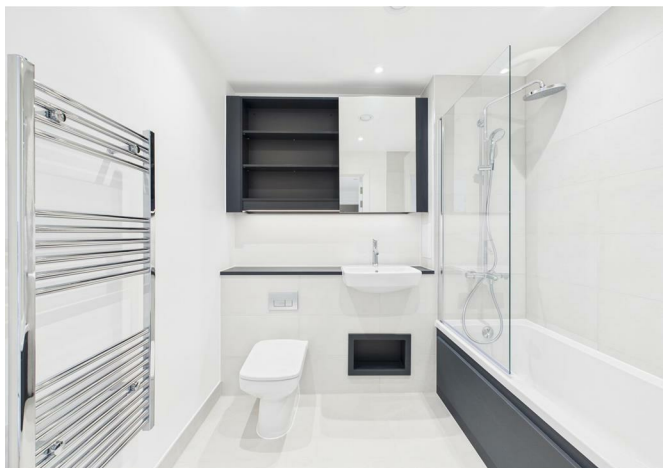




3421312 Herne Hill Road, Loughborough Junction, London, SE24 0AU
£2,100



3421312 Herne Hill Road, Loughborough Junction, London, SE24 0AU

£2,100

Introducing a vibrant new rental property on the market, situated near the station and close to central London.

This apartment is available furnished or unfurnished and features breathtaking city views from your own private terrace. Set in a brand-new building, the residence is expertly managed to ensure peace of mind with secure access.

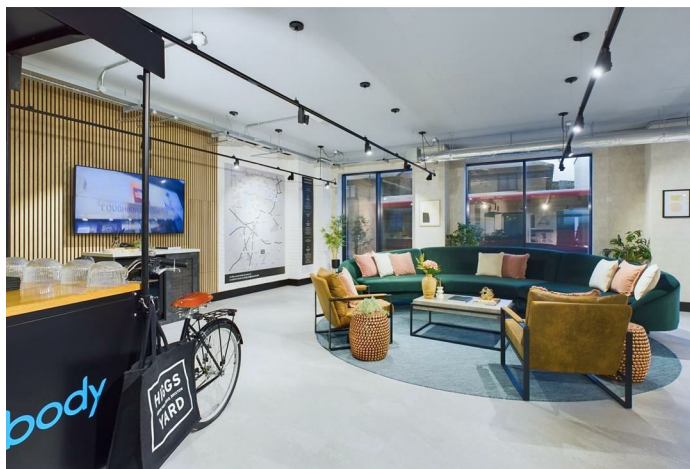
Modern conveniences are at your fingertips with a built-in dishwasher and washer/dryer. Perfect for those who value proximity to daily essentials, it's also just a short walk from the nearest supermarket. Whether you're enjoying the panoramic cityscape or the comfort of high-end appliances, this apartment promises a stylish and convenient urban living experience.

Description

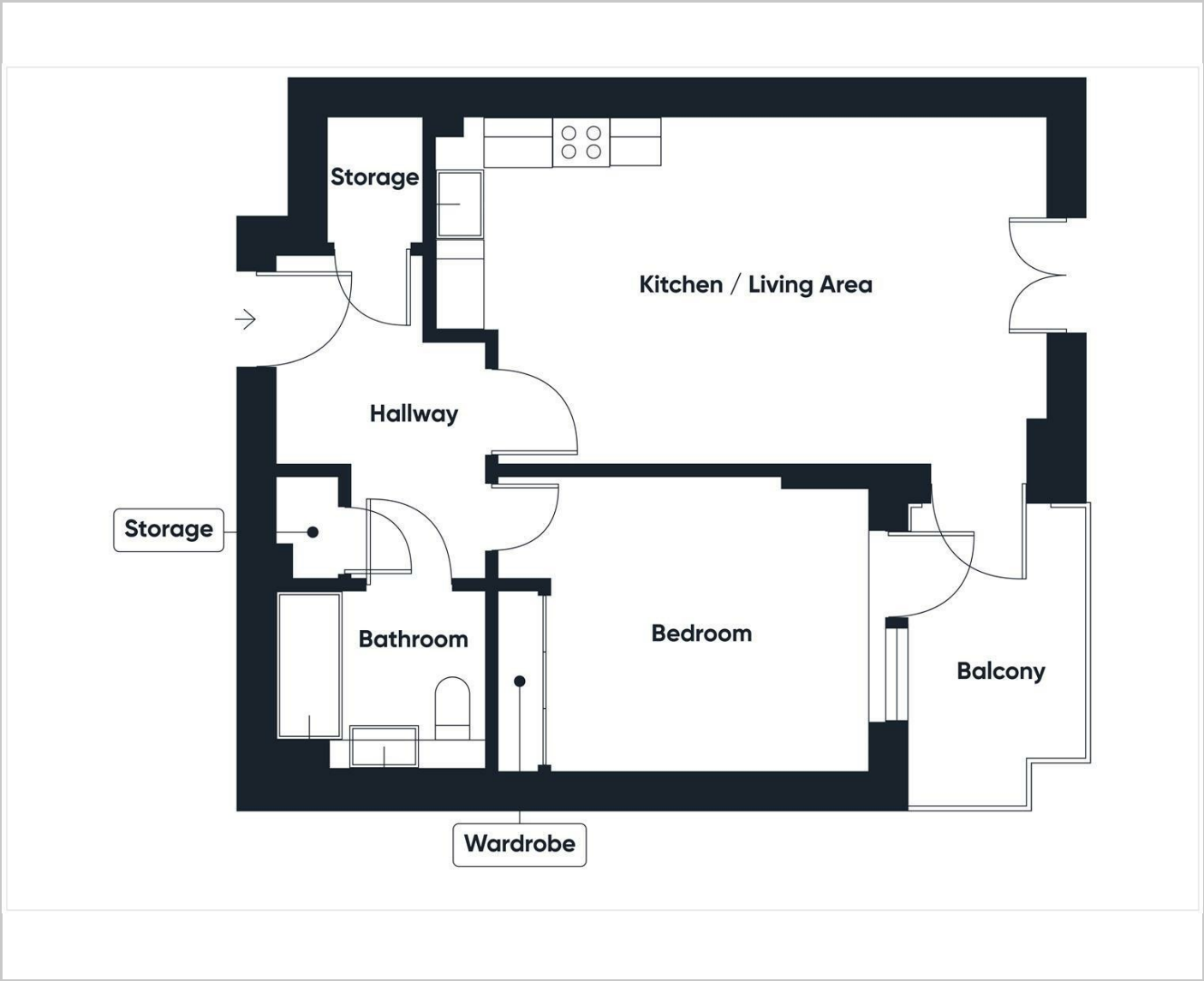
Situation



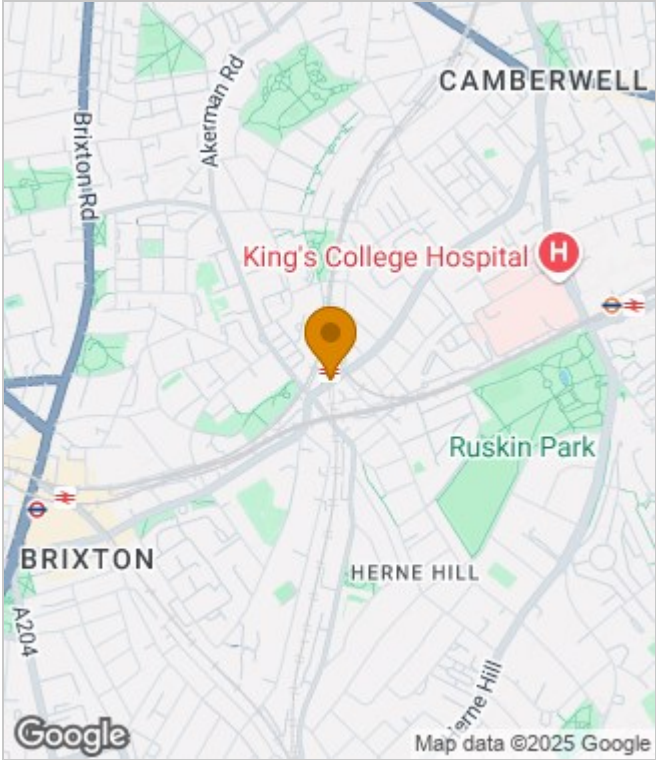
Furnished
Council Tax Band: C
Available:



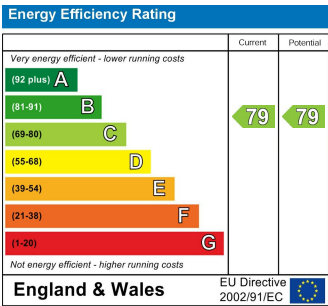
Floor Plans



Area Map



Energy Performance Graph



These particulars, whilst believed to be accurate are set out as a general outline only for guidance and do not constitute any part of an offer or contract. Intending purchasers should not rely on them as statements of representation of fact, but must satisfy themselves by inspection or otherwise as to their accuracy. No person in this firms employment has the authority to make or give any representation or warranty in respect of the property.