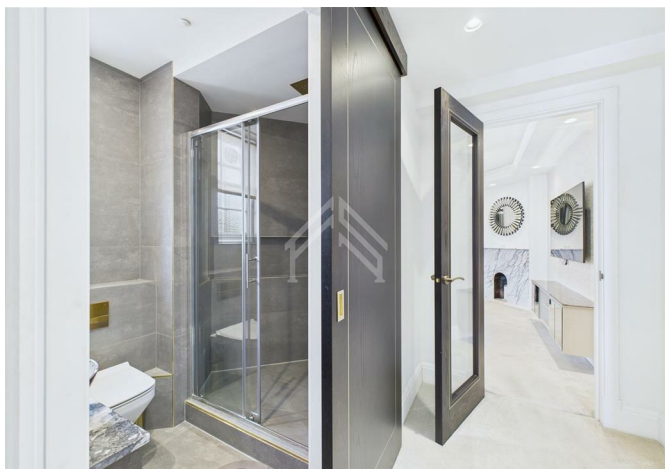




Flat 304, Grove Court Grove End Road, London, NW8 9EP
£3,500



Flat 304, Grove Court Grove End Road, London, NW8 9EP

£3,500

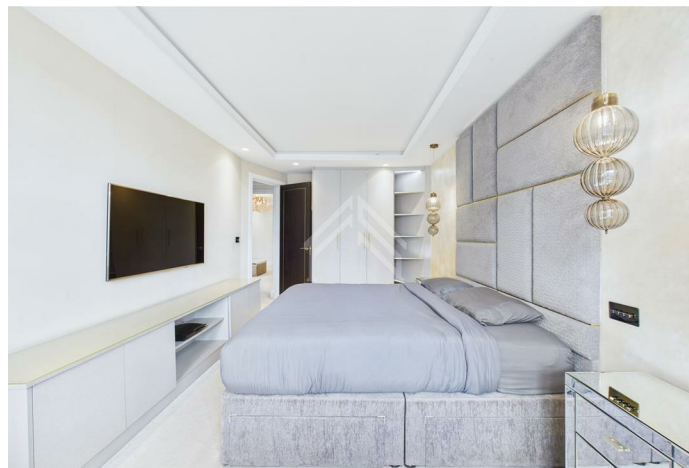
New Listing, light-filled two-bedroom apartment on the third floor of a secure, concierge-managed building just moments from St John's Wood Station. Flooded with natural light and offering ample storage throughout, the home enjoys access to beautifully maintained communal gardens. Convenience is assured with a lift, secure entry system. The apartment also features a washer/dryer and dishwasher, along with essential appliances including a kettle, toaster, and microwave.

Description



Situation

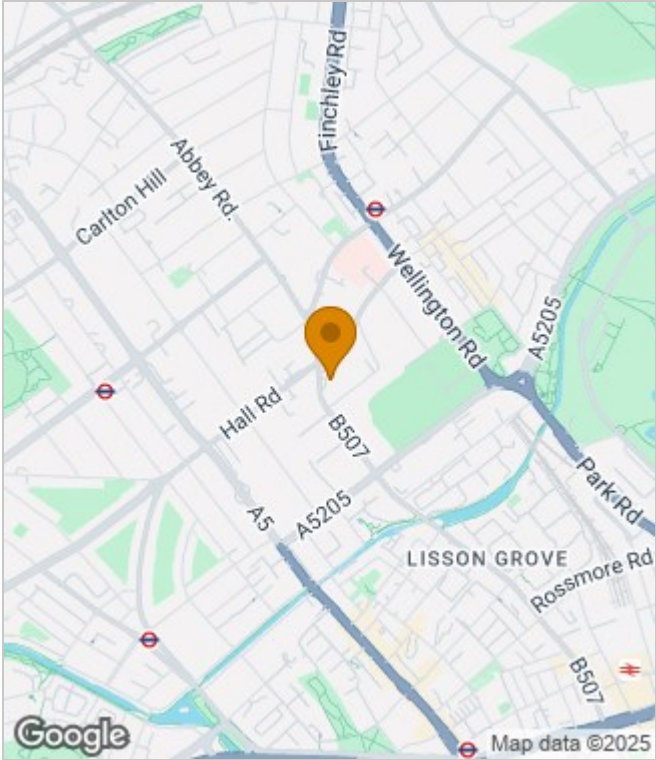
Furnished
Council Tax Band:
Available:



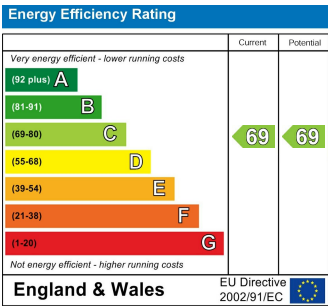
Floor Plans



Area Map



Energy Performance Graph



These particulars, whilst believed to be accurate are set out as a general outline only for guidance and do not constitute any part of an offer or contract. Intending purchasers should not rely on them as statements of representation of fact, but must satisfy themselves by inspection or otherwise as to their accuracy. No person in this firms employment has the authority to make or give any representation or warranty in respect of the property.