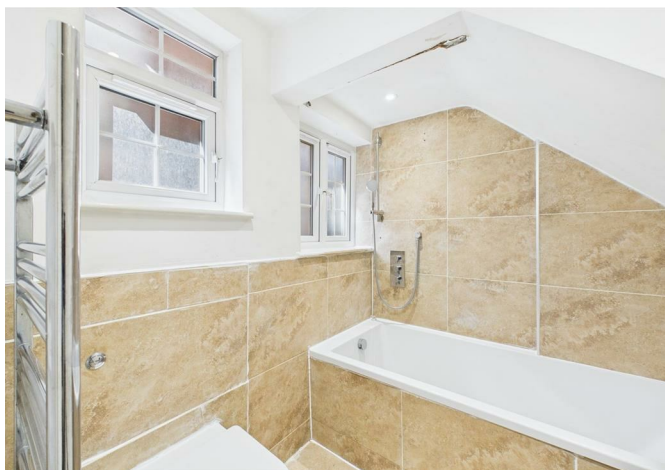
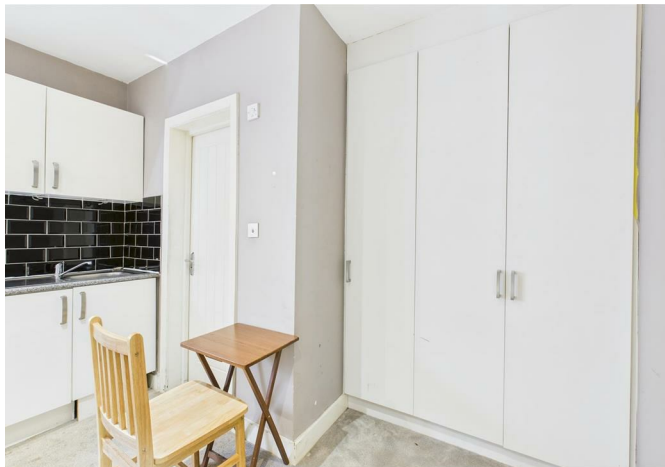




Flat 2, 504 Finchley Road, London, NW11 8DE
£1,250 Per month



Flat 2, 504 Finchley Road, London, NW11 8DE

£1,250 Per month

Modern Studio Flat to Rent – Prime Location.

A newly listed, furnished studio flat available for rent with move-in from May/June. Located in a prime location, just minutes from the station, this property offers secure entry and is professionally managed for peace of mind. Ideal for commuters or city dwellers looking for convenience and comfort.

Description

Situation



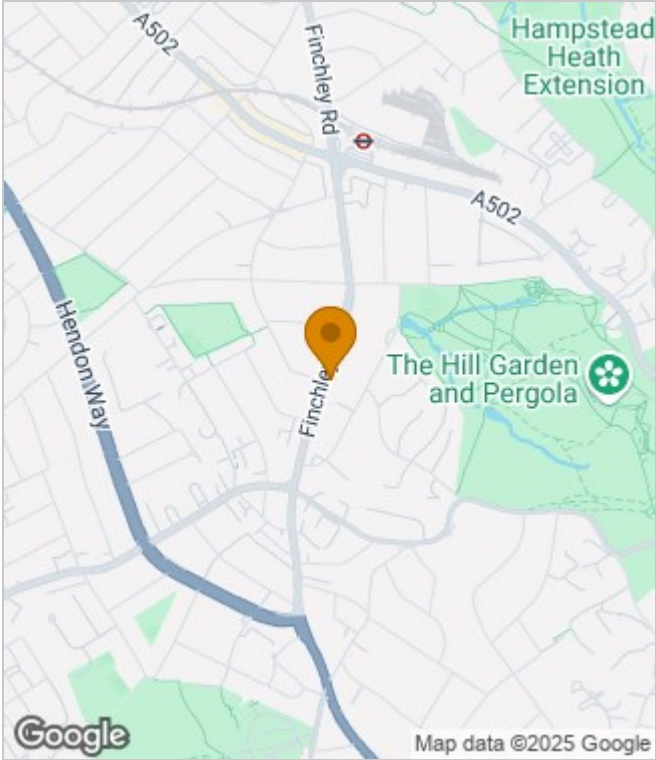
Furnished
Council Tax Band:
Available:



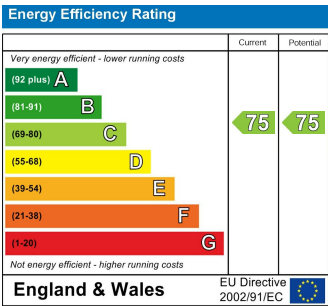
Floor Plans



Area Map



Energy Performance Graph



These particulars, whilst believed to be accurate are set out as a general outline only for guidance and do not constitute any part of an offer or contract. Intending purchasers should not rely on them as statements of representation of fact, but must satisfy themselves by inspection or otherwise as to their accuracy. No person in this firms employment has the authority to make or give any representation or warranty in respect of the property.