



Apartment 35, Convent Court Convent Court, Hatch Lane, Windsor, SL4 3QR
£1,600 Per month



Apartment 35, Convent Court Convent Court, Hatch Lane, Windsor, SL4 3QR

£1,600 Per month

Property to Rent – Central Windsor.

Now available to rent, this new listing offers a spacious 2 bed, 2 bath home in a gated development located in the heart of Central Windsor. The property features large bedrooms, ample storage, and the convenience of private parking. Situated in a sought-after area, it combines comfort with a prime town centre location—ideal for professionals or small families.

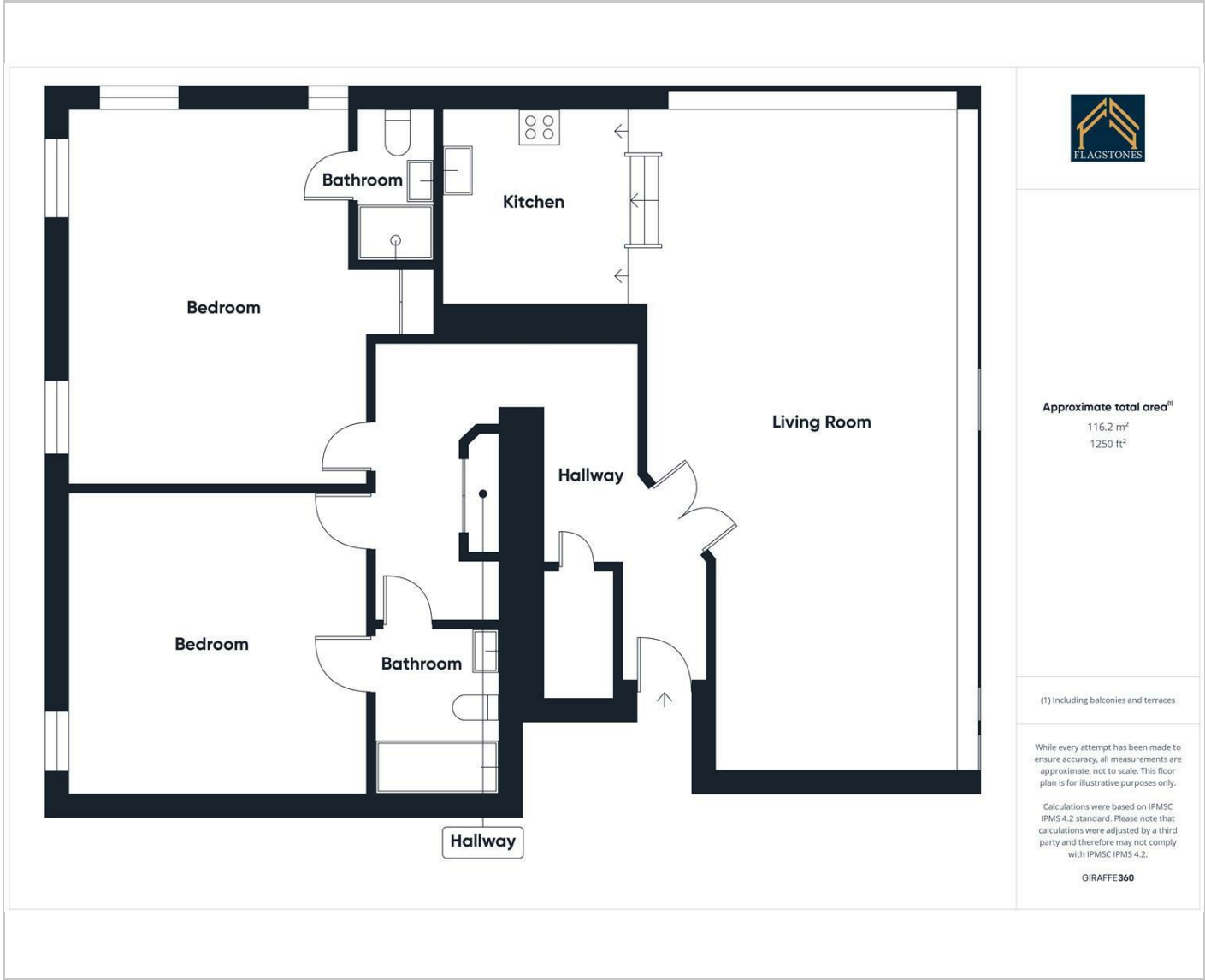
Description

Situation

Furnished
Council Tax Band:
Available:



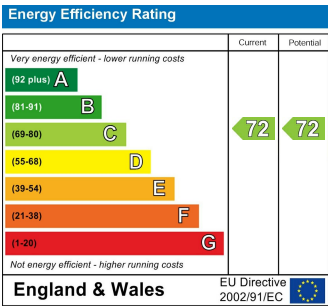
Floor Plans



Area Map



Energy Performance Graph



These particulars, whilst believed to be accurate are set out as a general outline only for guidance and do not constitute any part of an offer or contract. Intending purchasers should not rely on them as statements of representation of fact, but must satisfy themselves by inspection or otherwise as to their accuracy. No person in this firms employment has the authority to make or give any representation or warranty in respect of the property.