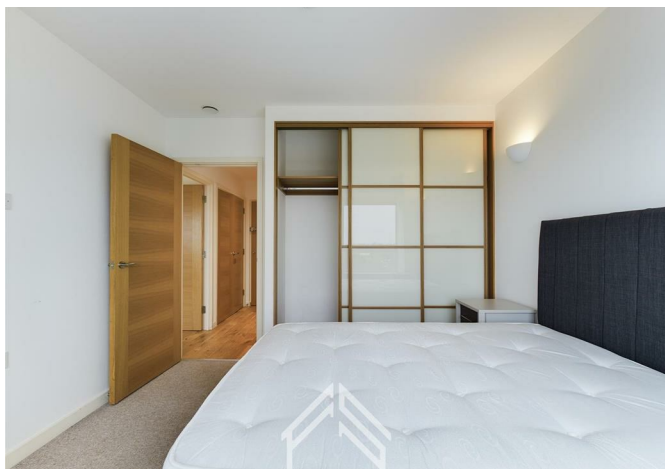
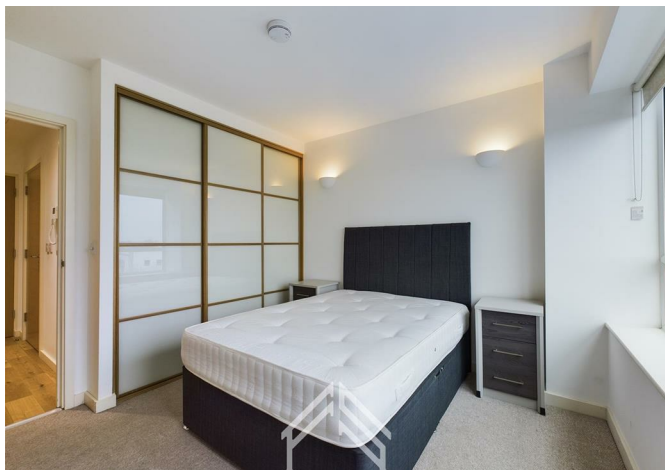




32194 Windmill Road, Sunbury-On-Thames, TW16 7FH  
£1,250



32194 Windmill Road, Sunbury-On-Thames, TW16 7FH

**£1,250**

The property benefits from a concierge/ security. The flat consists of large open plan living/kitchen, fully integrated appliance, Large double bedroom, shower/bathroom, large storage cupboard in hallway. A furniture package is provided consisting of Sofa, dining table with chairs and Double bed (with mattress).

The apartments have exceptional EPC Ratings, which provide more efficient energy use providing you, the renter, with lower utility bills.

Area Guide: Sunbury is a suburb in the Surrey borough of Spelthorne, resting less than 15 miles from Central London. The town benefits from two railway stations which link to London Waterloo and it is located off Junction 1 of the M3 motorway. exceptional views from upper the floors. Dolphin House features several different apartments on various floors, with a variety of layouts and aspects. The units are offered furnished as in the photos in this listing. The photos and the floor plan are for illustration purposes only.

Call Flagstones Property Group today to avoid disappointment.



Description

Situation

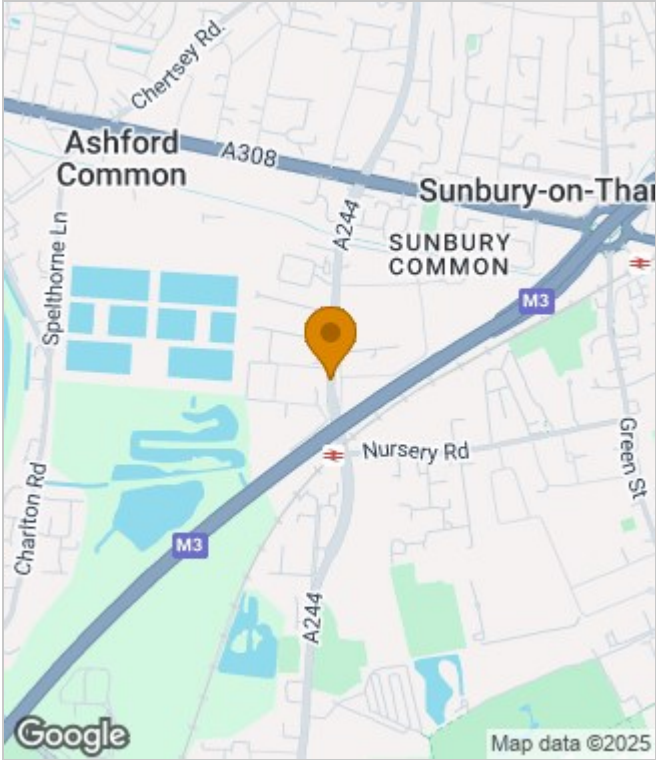
Furnished  
Council Tax Band:  
Available:



Floor Plans



Area Map



Energy Performance Graph



These particulars, whilst believed to be accurate are set out as a general outline only for guidance and do not constitute any part of an offer or contract. Intending purchasers should not rely on them as statements of representation of fact, but must satisfy themselves by inspection or otherwise as to their accuracy. No person in this firms employment has the authority to make or give any representation or warranty in respect of the property.