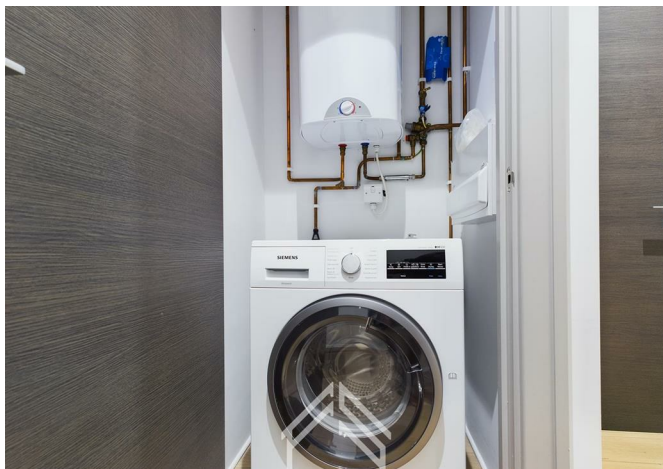
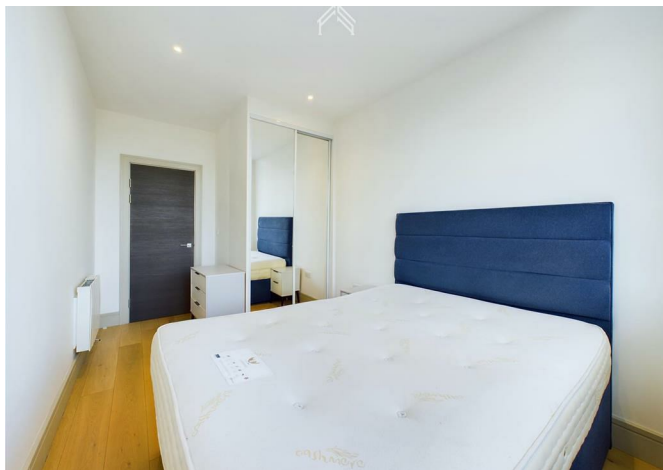




3128776 Imperial Drive, Broad House, Harrow, HA2 7DP
£1,400



3128776 Imperial Drive, Broad House, Harrow, HA2 7DP

£1,400

Located in North West London. Minutes away is Rayners Lane Train Station, making it a short journey to Wembley Stadium, Hammersmith & Central London.

This flat location has a vast choice of shops and restaurants and comprises two large shopping centres nearby.

There's a wealth of Character and History within reach, including the picturesque Harrow on the Hill, St Marys Church, Battle of Britain Bunker and Bentley Priory Museum.

Furniture includes : Double Bed with mattress, Sofa, Wardrobe, Bedside unit, Washing machine, Dishwasher, Blinds

Description

Situation

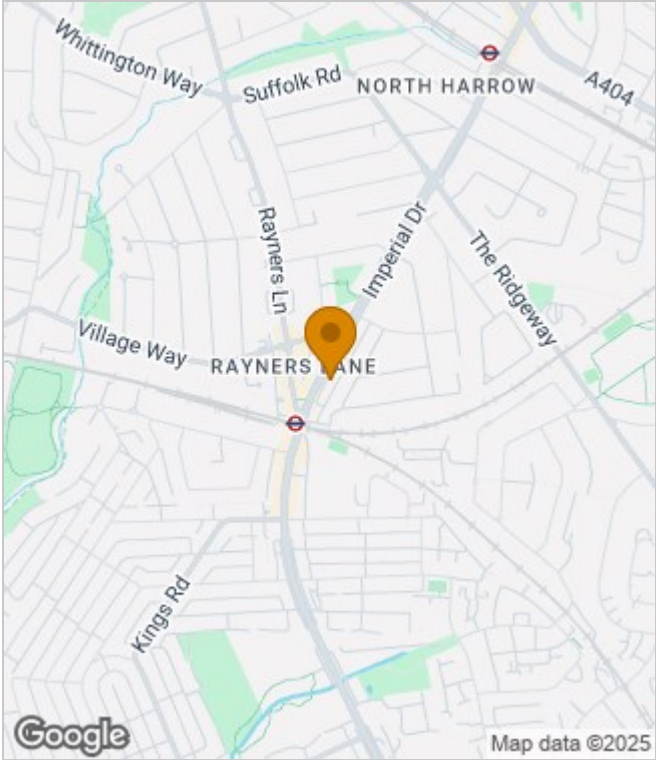
Furnished
Council Tax Band: C
Available:



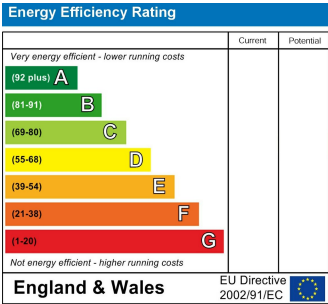
Floor Plans



Area Map



Energy Performance Graph



These particulars, whilst believed to be accurate are set out as a general outline only for guidance and do not constitute any part of an offer or contract. Intending purchasers should not rely on them as statements of representation of fact, but must satisfy themselves by inspection or otherwise as to their accuracy. No person in this firms employment has the authority to make or give any representation or warranty in respect of the property.