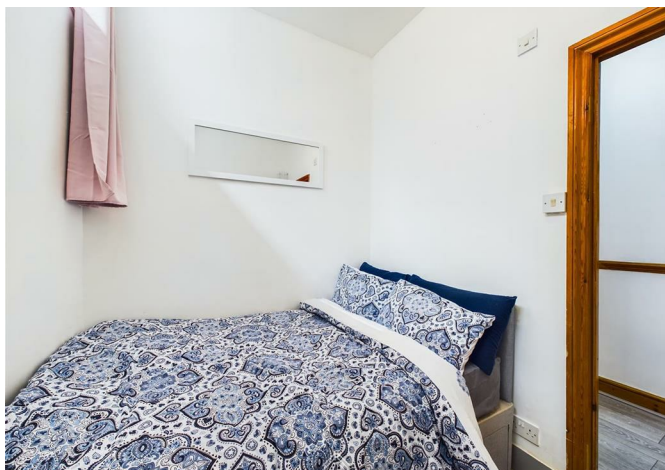




789 Wellesley Road, Harrow, HA1 1QL  
£1,500





789 Wellesley Road, Harrow, HA1 1QL

£1,500

This charming 1-bedroom flat is now available for rent. Located in close proximity to Harrow on the Hill station, this property offers convenient access to transportation and local amenities. The flat features a spacious bedroom, a well-designed office space, and comes fully furnished, providing a comfortable and functional living environment. With its excellent location and thoughtful layout, this flat is ideal for professionals or couples seeking a cozy and well-equipped living space and private garden. Don't miss out on this opportunity to enjoy a stylish and convenient lifestyle in the heart of Harrow.



Description

Situation

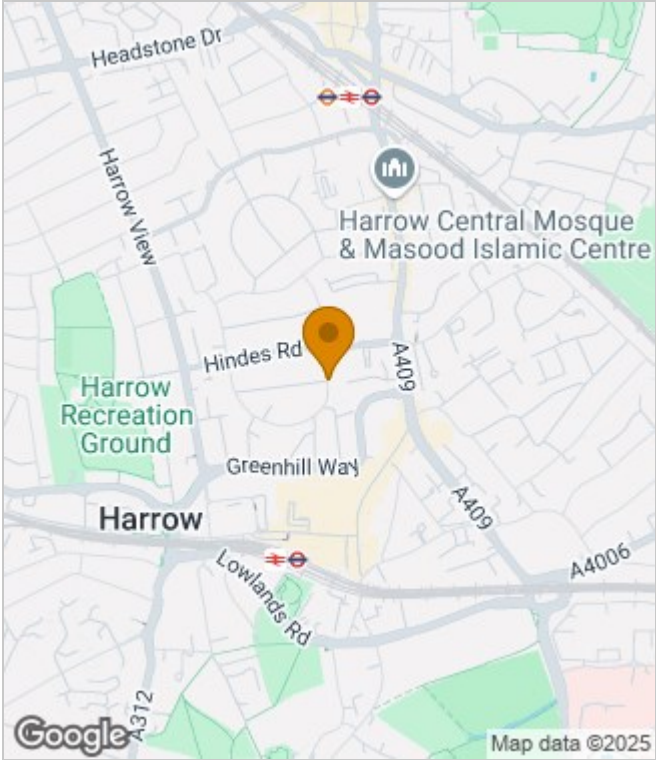
Furnished  
Council Tax Band:  
Available:



Floor Plans



Area Map



Energy Performance Graph



These particulars, whilst believed to be accurate are set out as a general outline only for guidance and do not constitute any part of an offer or contract. Intending purchasers should not rely on them as statements of representation of fact, but must satisfy themselves by inspection or otherwise as to their accuracy. No person in this firms employment has the authority to make or give any representation or warranty in respect of the property.