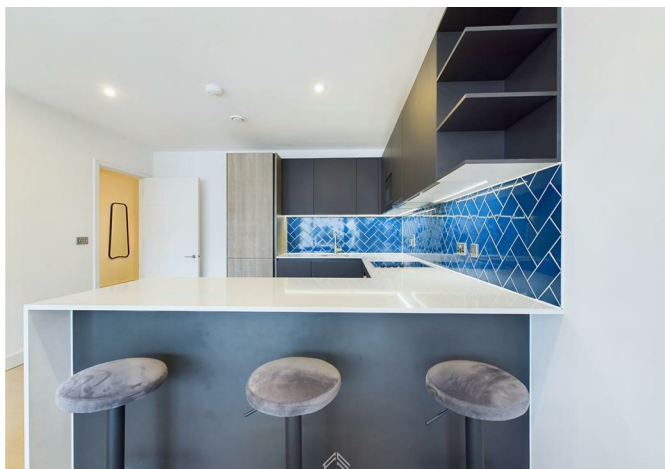
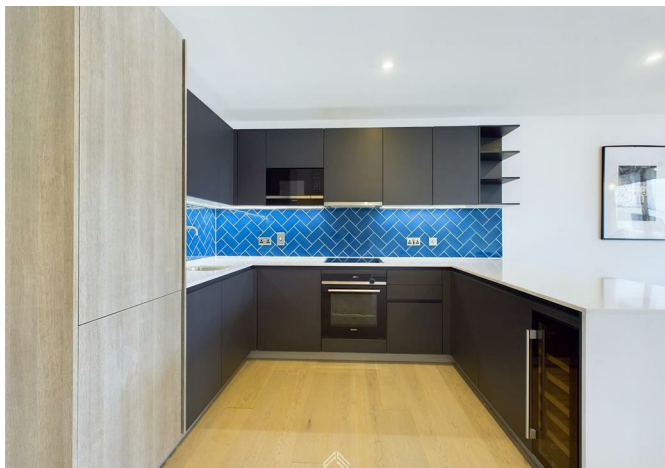




321333 Cremer Street, Rosewood Building, London, E2 8GX
£4,650



321333 Cremer Street, Rosewood Building, London, E2 8GX

£4,650

2 Weeks Rent Free* An elegantly furnished 3-bedroom apartment with dual aspects located in the Rosewood Building.

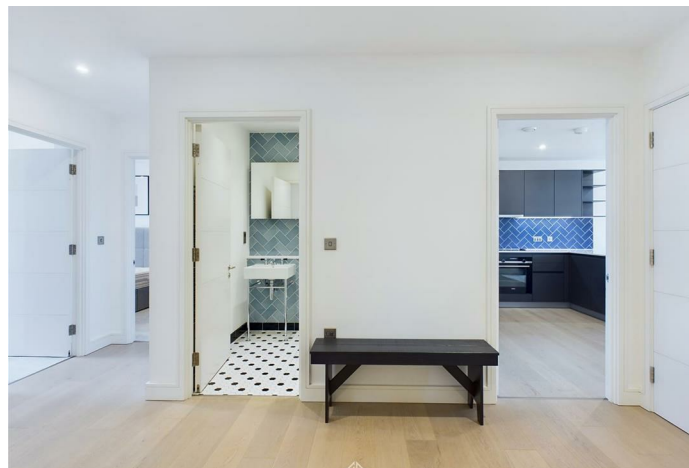
This expansive residence features three double bedrooms, each equipped with fitted wardrobes, a generously sized open-plan living area, balconies accessible from every bedroom, a fully fitted kitchen boasting integrated Siemens appliances, a luxurious bathroom, stylish wood flooring, and ample storage space.

Shoreditch Exchange enjoys a prime location for access to the City of London and is nestled in the vibrant heart of Shoreditch. Conveniently positioned just moments away from Hoxton station (0.1 mile), the development offers additional perks such as a 24-hour concierge, an on-site gymnasium, a private cinema, and a rooftop terrace.

Description

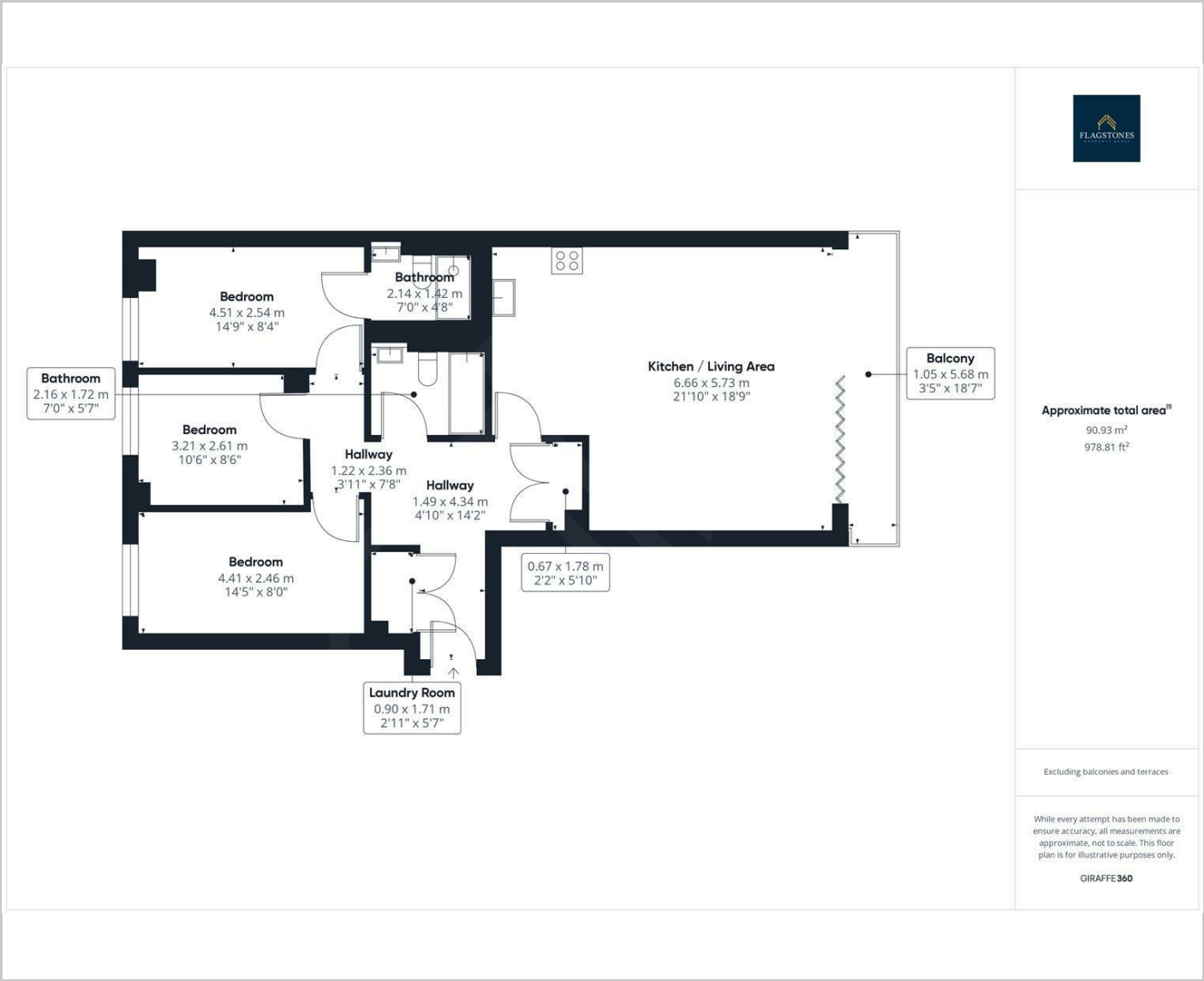


Situation

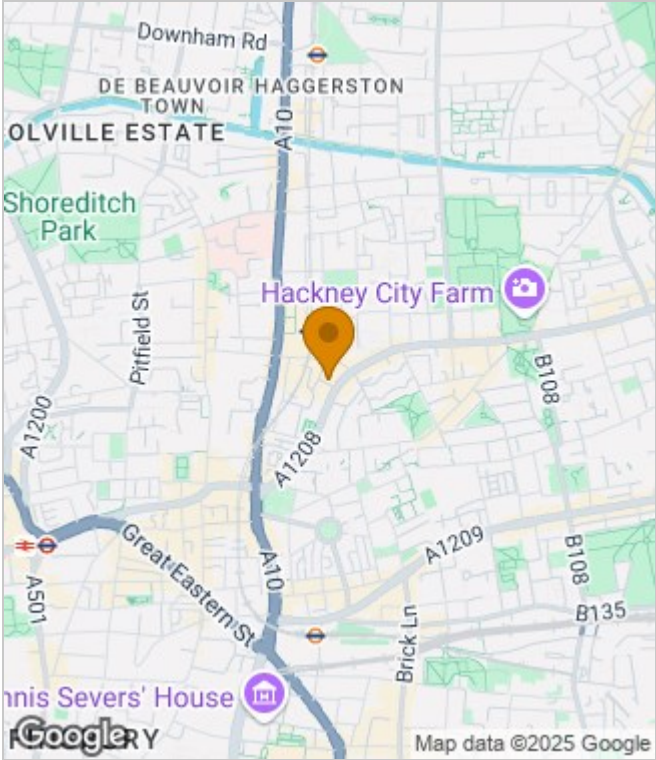


Furnished
Council Tax Band: C
Available:

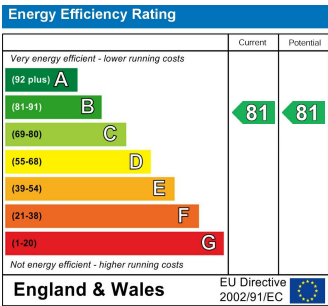
Floor Plans



Area Map



Energy Performance Graph



These particulars, whilst believed to be accurate are set out as a general outline only for guidance and do not constitute any part of an offer or contract. Intending purchasers should not rely on them as statements of representation of fact, but must satisfy themselves by inspection or otherwise as to their accuracy. No person in this firms employment has the authority to make or give any representation or warranty in respect of the property.