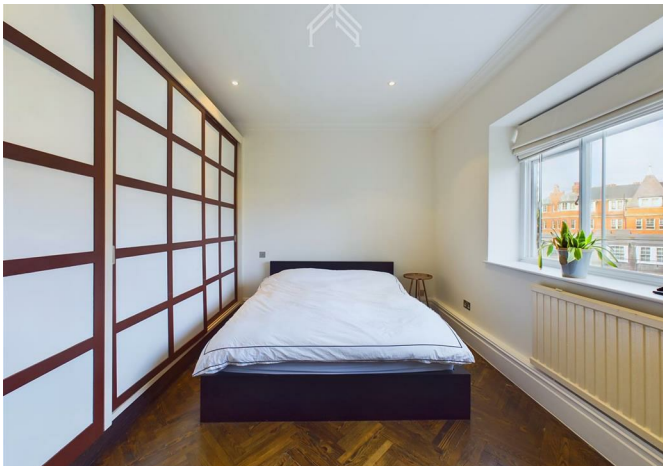




FLAGSTONES
PROPERTY GROUP



Flat 8, 15, Delahay House Chelsea Embankment, London, SW3 4LA
£4,000



Flat 8, 15, Delahay House Chelsea Embankment, London, SW3 4LA

£4,000

Flagstones is pleased to offer a unique rental opportunity: a charming period property located on Chelsea Embankment.

As you step into the living room, you're welcomed by soaring ceilings and a flood of natural light from the south, offering stunning views of the River Thames.

To the back of the home, you'll find two spacious double bedrooms, with the master featuring an en-suite. The family bathroom is conveniently accessible from the entrance hall, and both bedrooms boast views of the lovely communal gardens.

Situated in the delightful Kensington and Chelsea neighborhood, this property is perfectly positioned for excellent educational opportunities, being just minutes from Christ Church CofE Primary School (rated 'Outstanding' by Ofsted) and close to The Grey Coat Hospital, one of the top secondary schools nationwide. It's also near Sloane Square for London Underground services and Battersea Park for National Rail connections.

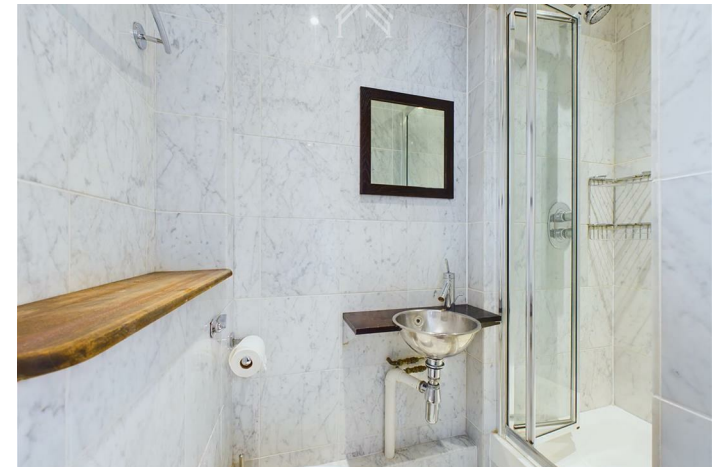
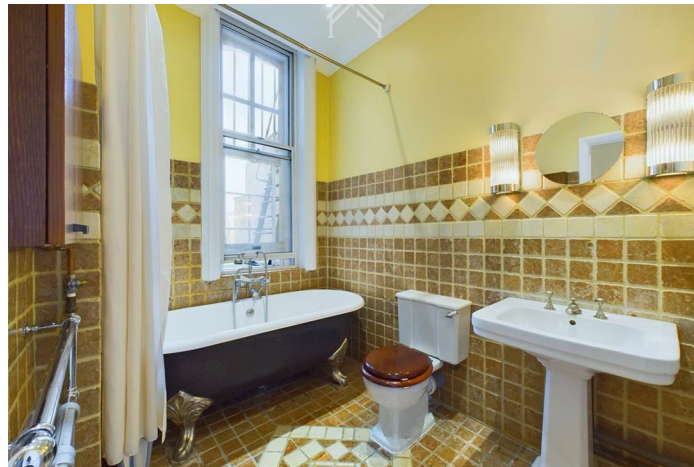
Delahay House is a striking Victorian building located on the sought-after Chelsea Embankment in Old Chelsea. It is near key attractions like Burton Court, Battersea Park, and The Chelsea Physic Gardens. The Kings Road and Sloane Square are nearby, offering a wide range of shops, restaurants, and amenities.

Description

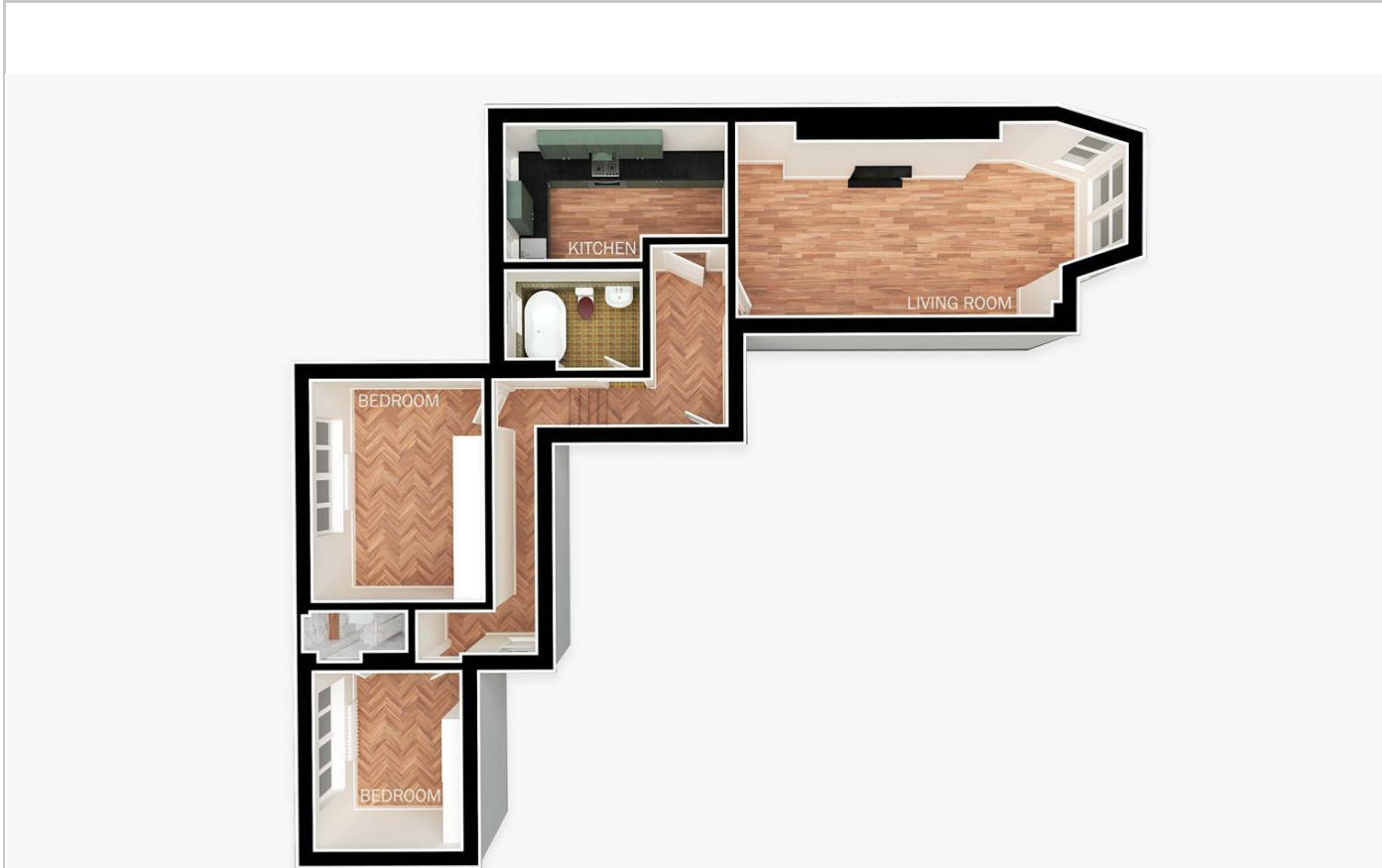


Situation

Not specified
Council Tax Band:
Available:



Floor Plans



Chelsea Embankment

Property Type - Flat

Bedrooms - x2

Bathrooms - x2

Approx. total area

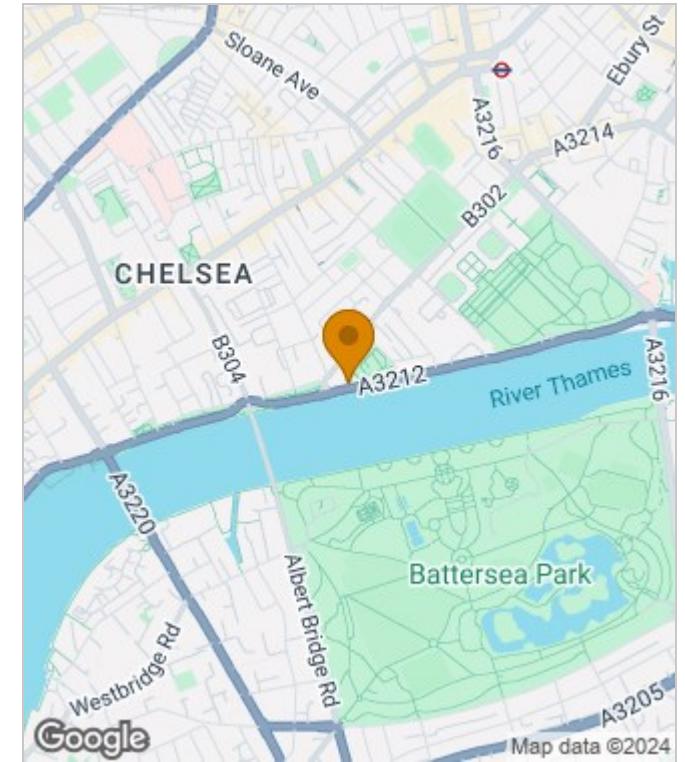
89.18 m²

960 ft²

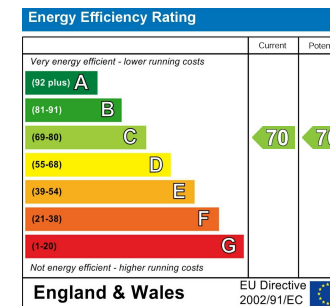
Measurements are approximate and not to scale in this floor plan. Provided for illustrative purposes.



Area Map



Energy Performance Graph



These particulars, whilst believed to be accurate are set out as a general outline only for guidance and do not constitute any part of an offer or contract. Intending purchasers should not rely on them as statements of representation of fact, but must satisfy themselves by inspection or otherwise as to their accuracy. No person in this firm's employment has the authority to make or give any representation or warranty in respect of the property.