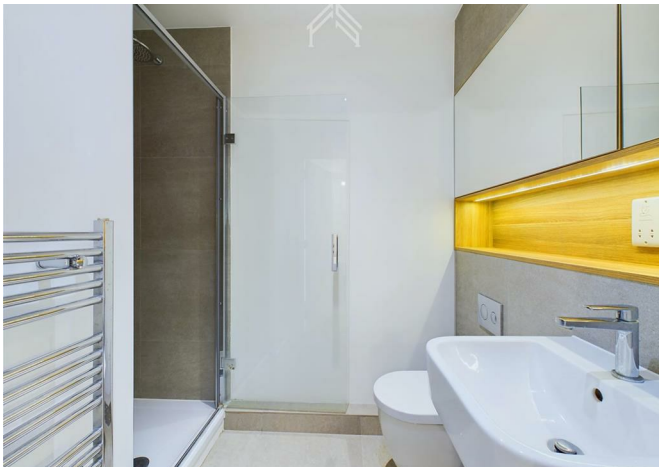
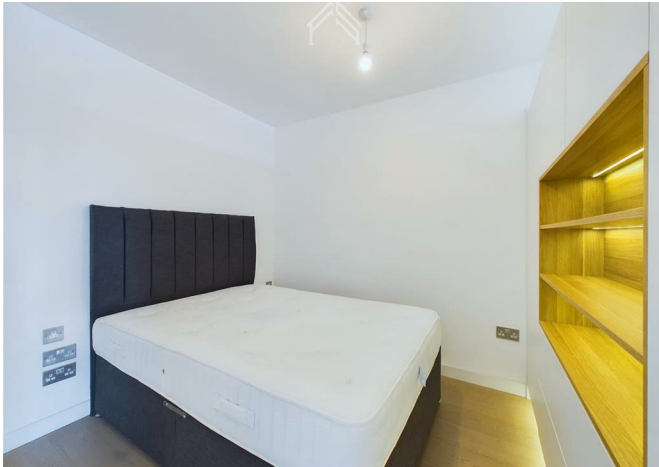




3214 Highgate Hill, London, N19 5FG  
£1,795



## 3214 Highgate Hill, London, N19 5FG

£1,795

AVAILABLE IN NOVEMBER / MOVE IN. Located in North London. Minutes away is Archway Underground Station, making it a short journey to Kings Cross, Central London.

This flat location has a vast choice of shops and restaurants and comprises two large shopping centres nearby.

There's a wealth of Character and History within reach, Whittington Hospital forms a large site in the west of the area.

Furniture includes Double Bed with mattress, Sofa, Wardrobe, Bedside units, Washing machine, Dishwasher, Blinds, Fridge, Freezer. The flat includes access to a variety of convenient amenities like concierge service, a co-working space, a communal roof terrace and secure bike garage.

Archway is served by the following bus routes: 4, 17, 41, 43 (24 hour), 134 (24 hour), 143, 210, 263, 271 (24 hour), 390 (24 hour), C11 and W5. Also Night Bus routes N20 and N41. Hill House features several different apartments on various floors, with a variety of layouts and aspects. The units are offered furnished as in the photos in this listing. The property in question is very similar but may differ slightly in layout.

**Description**

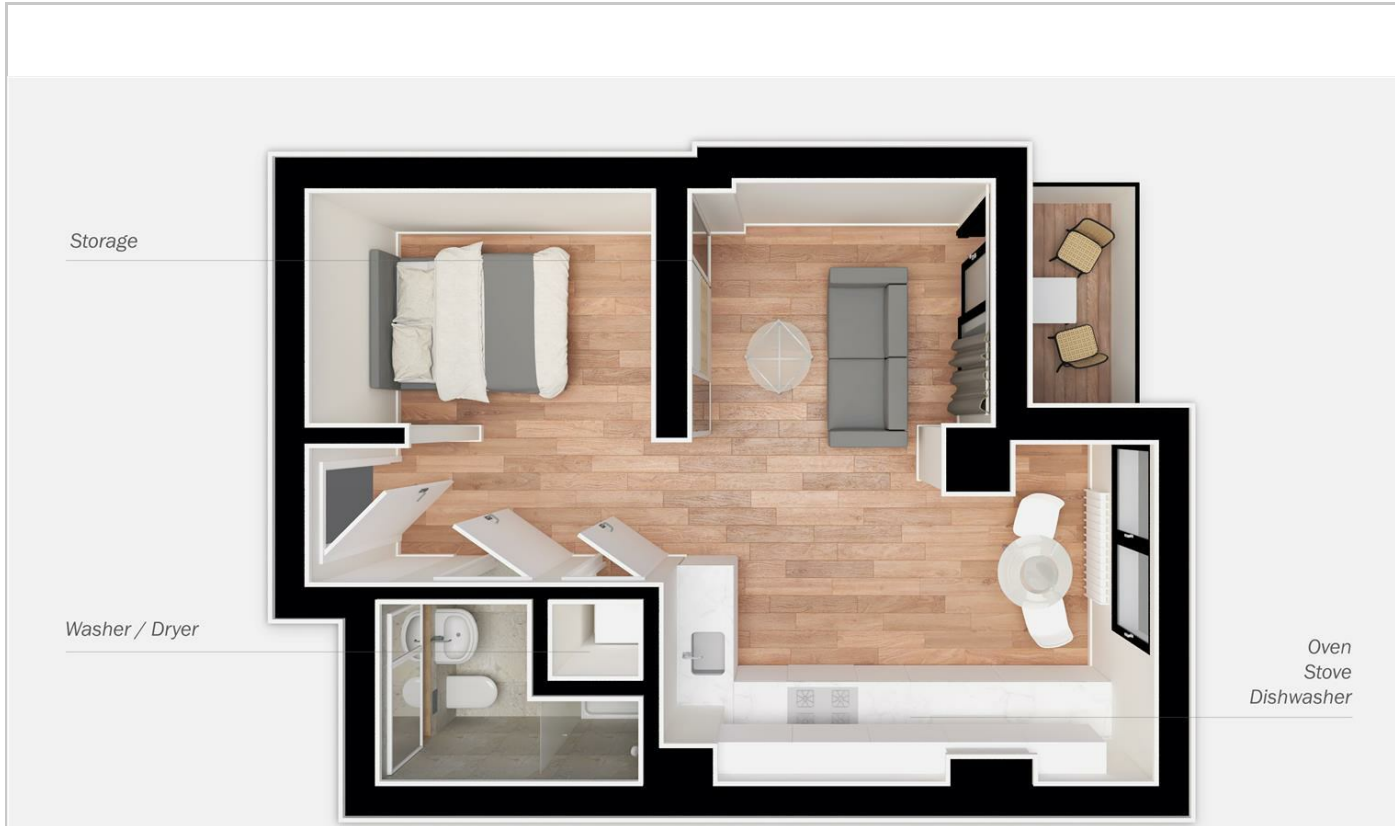


**Situation**



Furnished  
Council Tax Band:  
Available:

## Floor Plans



**Hill House**  
- Archway

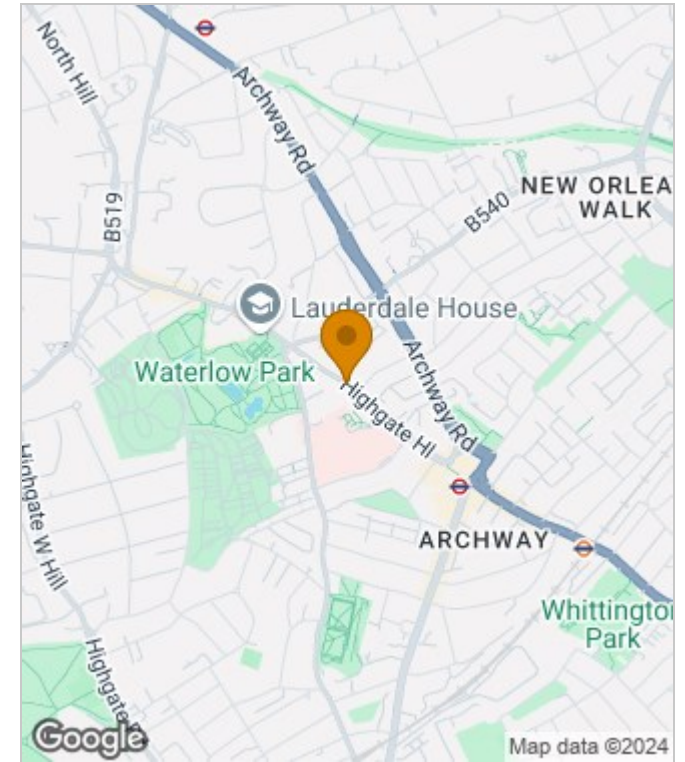
**Property Type** - Studio  
**Bathrooms** - x1

**Approx. total area**  
38 m<sup>2</sup>  
410 ft<sup>2</sup>

*Measurements are approximate and not to scale in this floor plan. Provided for illustrative purposes.*



## Area Map



## Energy Performance Graph

Energy Efficiency Rating		Current	Potential
Very energy efficient - lower running costs			
(92 plus) <b>A</b>			
(81-91) <b>B</b>			
(69-80) <b>C</b>			
(55-68) <b>D</b>			
(39-54) <b>E</b>			
(21-38) <b>F</b>			
(1-20) <b>G</b>			
Not energy efficient - higher running costs			
<b>England &amp; Wales</b>	EU Directive 2002/91/EC		

These particulars, whilst believed to be accurate are set out as a general outline only for guidance and do not constitute any part of an offer or contract. Intending purchasers should not rely on them as statements of representation of fact, but must satisfy themselves by inspection or otherwise as to their accuracy. No person in this firm's employment has the authority to make or give any representation or warranty in respect of the property.