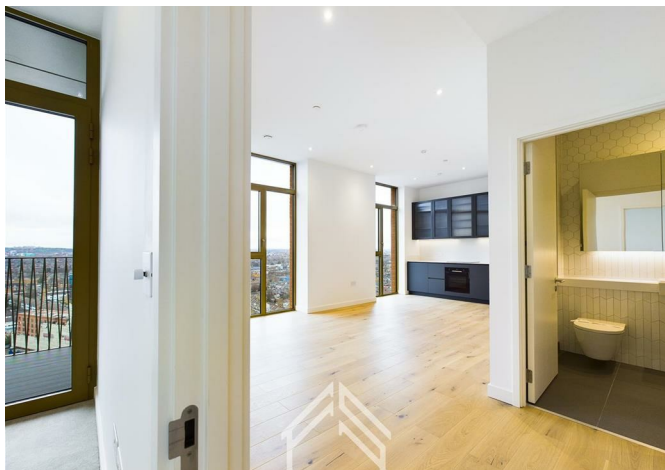




33 1 Ashley Road, Tottenham Hale, N17 9LP  
£2,150





33 1 Ashley Road, Tottenham Hale, N17 9LP

£2,150

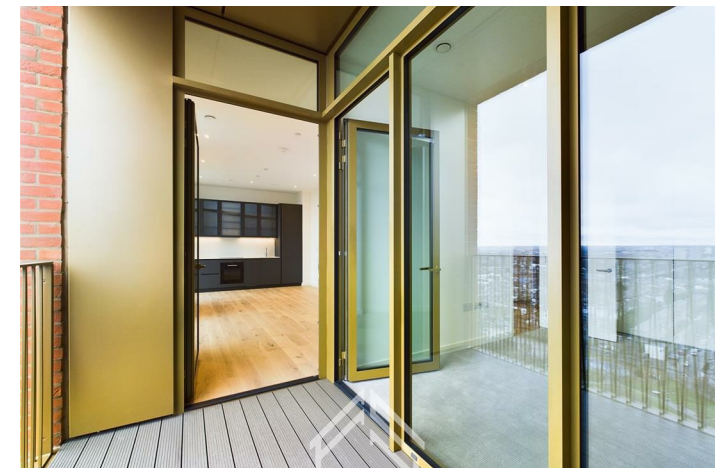
This one bedroom apartment located on the 18th floor offers luxurious living, impressive vaulted ceilings along with breathtaking views of London.

1 Ashley Road provides a generous communal roof terrace on the 5th floor for residents to enjoy with expansive views to the West and North London. The façades of the building are predominantly brick, a masonry weave that is inspired by Haringey's buildings of rich detailing decorates the brickwork extending to the full height. The subtle variety of brick tones are complemented by rich 'brass' coloured metal and black metal features that provides robust and elegant details reflecting on the Gestetner Duplicator designed by Raymond Loewy. Metal perforation and balcony details are inspired by the print method of the Duplicators Cyclograph.

## Description



## Situation



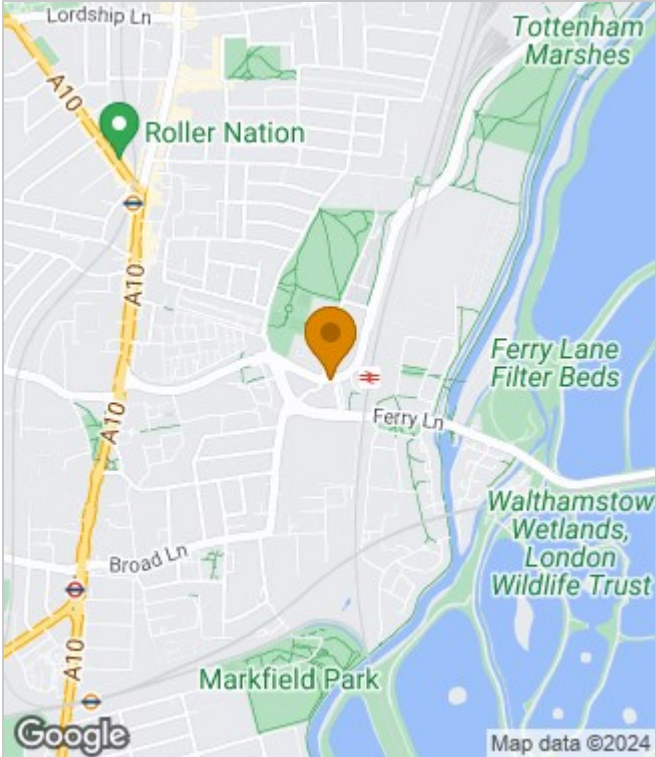
Unfurnished  
Council Tax Band: B  
Available:



# Floor Plans



# Area Map



# Energy Performance Graph

Energy Efficiency Rating		Current	Potential
Very energy efficient - lower running costs			
(92 plus) <b>A</b>			
(81-91) <b>B</b>			
(69-80) <b>C</b>			
(55-68) <b>D</b>			
(39-54) <b>E</b>			
(21-38) <b>F</b>			
(1-20) <b>G</b>			
Not energy efficient - higher running costs			
<b>England &amp; Wales</b>	EU Directive 2002/91/EC		

These particulars, whilst believed to be accurate are set out as a general outline only for guidance and do not constitute any part of an offer or contract. Intending purchasers should not rely on them as statements of representation of fact, but must satisfy themselves by inspection or otherwise as to their accuracy. No person in this firms employment has the authority to make or give any representation or warranty in respect of the property.