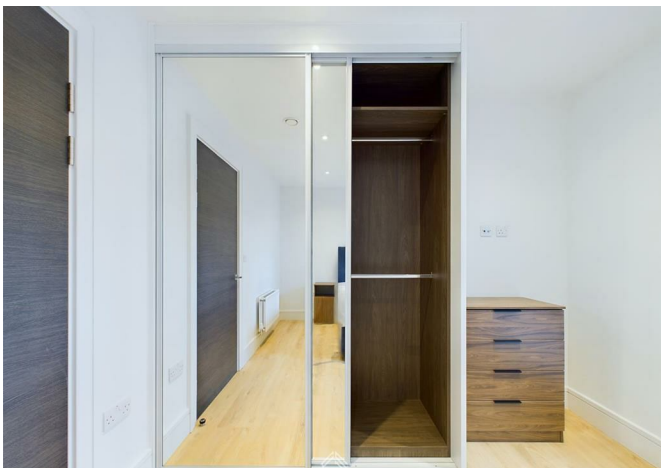




Boston House, A1001 Olympic Way, Wembley, HA9 0NP
£2,800



Boston House, A1001 Olympic Way, Wembley, HA9 0NP

£2,800

Welcome to the epitome of modern living at Olympic Way, Wembley! Nestled on the doorstep of Wembley Park Station and standing proudly next to the iconic Wembley Stadium, these brand-new apartments offer a lifestyle of unparalleled convenience and luxury.

Apartments are ideally situated in the heart of Wembley, offering the best of city living with the added benefit of excellent transportation connections. Wembley Park Station is nearby, providing easy access to London and beyond.

These apartments have never been occupied before, offering a fresh and sophisticated living experience. Everything is pristine and tailored to residents' preferences.

If someone is interested in living in the heart of Wembley, with easy access to transportation, beautiful views, and modern, never-before-occupied apartments, they should certainly consider contacting Flagstones Property Group to secure their new home at Olympic Way.

Description



Situation



Furnished
Council Tax Band:
Available:

Floor Plans



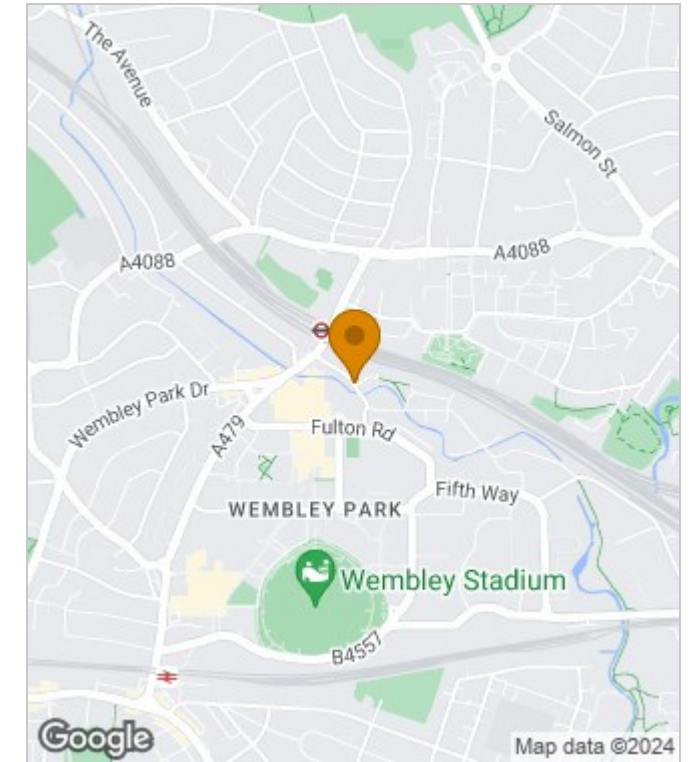
Olympic Way
- Wembley Park

Approx. total area
82.82 m²
891.51 ft²
(excluding balconies and terraces)

Property Type - Flat
Bedrooms - x3
Bathrooms - x1



Area Map



Energy Performance Graph

Energy Efficiency Rating		Current	Potential
Very energy efficient - lower running costs			
(92 plus) A			
(81-91) B			
(69-80) C			
(55-68) D			
(39-54) E			
(21-38) F			
(1-20) G			
Not energy efficient - higher running costs			
England & Wales	EU Directive 2002/91/EC		

These particulars, whilst believed to be accurate are set out as a general outline only for guidance and do not constitute any part of an offer or contract. Intending purchasers should not rely on them as statements of representation of fact, but must satisfy themselves by inspection or otherwise as to their accuracy. No person in this firm's employment has the authority to make or give any representation or warranty in respect of the property.