



Flat 22, Fallowfield Pooles Park, London, N4 3PA
£350,000



Flat 22, Fallowfield Pooles Park, London, N4 3PA

£350,000

Flagstones Property Group are delighted to offer to the market this larger than average three bedroom duplex apartment situated within the Six Acres Estates.

This property not only offers room for improvement but also great potential rental yields appropriate for any landlords looking to grow their portfolio.

Alternatively, this property would also suit first time buyers and those looking to up size.

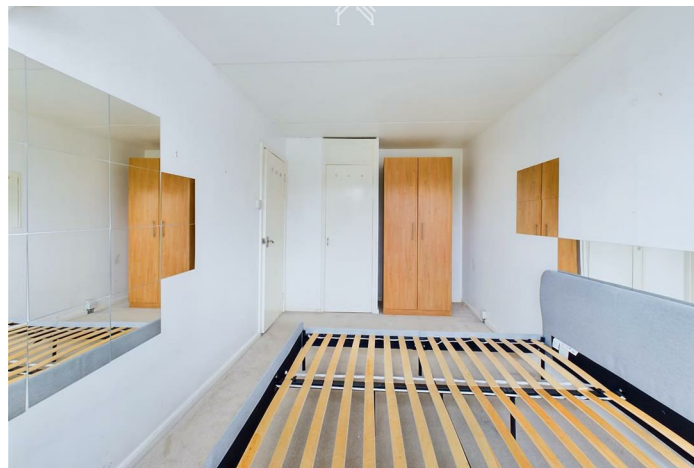
Fallowfield is located just a 5 minute walk from the Victoria and Piccadilly Line.

Please call Flagstones team to arrange viewings.

Description



Situation

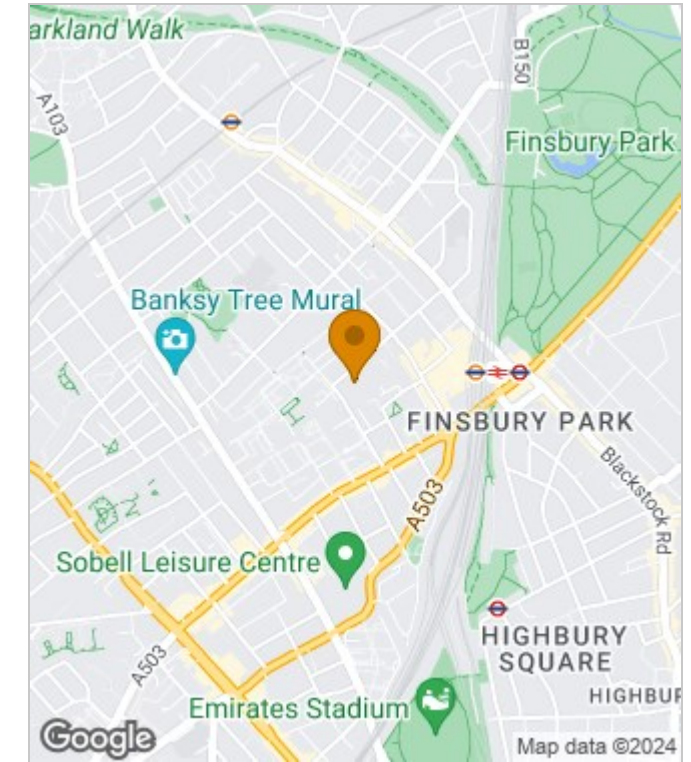


null
Council Tax Band:
Available:

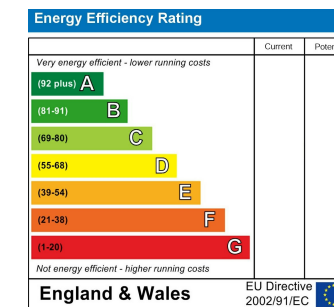
Floor Plans



Area Map



Energy Performance Graph



These particulars, whilst believed to be accurate are set out as a general outline only for guidance and do not constitute any part of an offer or contract. Intending purchasers should not rely on them as statements of representation of fact, but must satisfy themselves by inspection or otherwise as to their accuracy. No person in this firm's employment has the authority to make or give any representation or warranty in respect of the property.