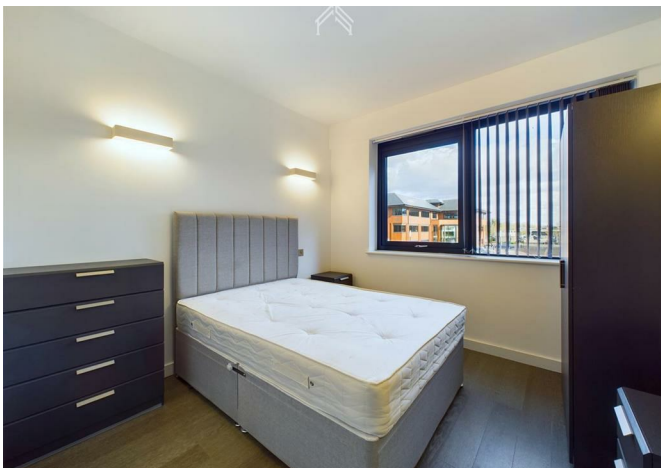


5456 Everard Close, St. Albans, AL1 2PS  
£1,900



**GATED PARKING  
CLOSE TO STATION  
18MIN TO CENTRAL LONDON**

**FROM  
£1900 pcm**

5456 Everard Close, St. Albans, AL1 2PS

**£1,900**

Located close to St. Albans City train station, from there it takes around 20 min to West Hampstead and approximately 45 minutes to London Euston. Luton Airport is 25 minutes' drive or 10 minutes by public transportation.

The apartments are fully furnished. They are all fitted with speaker system, dishwasher, washer/dryer, video entry system.

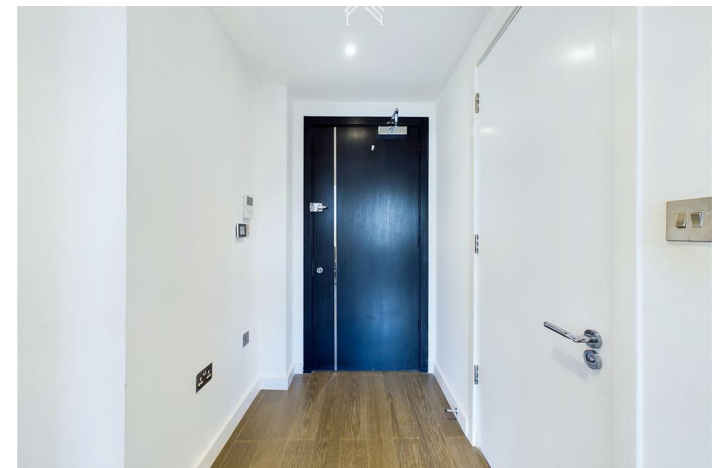
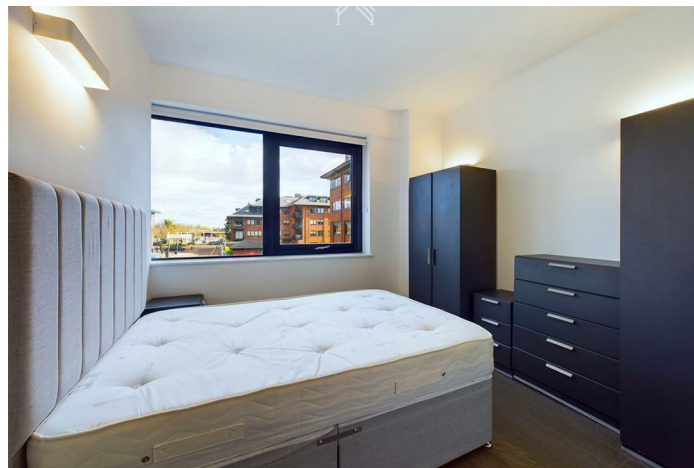
The apartments have exceptional EPC Ratings, which provide more efficient energy use providing you, the renter, with lower utility bills.

Area Guide: The Property is in the -growing City of St. Albans. The city has fabulous shopping facilities with many independent shops amongst the high street stores. With easy access to the M1 and M25 motorways, London Luton and Heathrow airports are both within easy reach. Abbott House features several different apartments on various floors, with a variety of layouts and aspects. The units are offered furnished as in the photos in this listing. The photos used are for illustration purposes only.

**Description**



**Situation**



Furnished  
Council Tax Band:  
Available:

# Floor Plans



# Area Map



# Energy Performance Graph

Energy Efficiency Rating		Current	Potential
Very energy efficient - lower running costs			
(92 plus) <b>A</b>			
(81-91) <b>B</b>			
(69-80) <b>C</b>			
(55-68) <b>D</b>			
(39-54) <b>E</b>			
(21-38) <b>F</b>			
(1-20) <b>G</b>			
Not energy efficient - higher running costs			
<b>England &amp; Wales</b>	EU Directive 2002/91/EC		

These particulars, whilst believed to be accurate are set out as a general outline only for guidance and do not constitute any part of an offer or contract. Intending purchasers should not rely on them as statements of representation of fact, but must satisfy themselves by inspection or otherwise as to their accuracy. No person in this firms employment has the authority to make or give any representation or warranty in respect of the property.