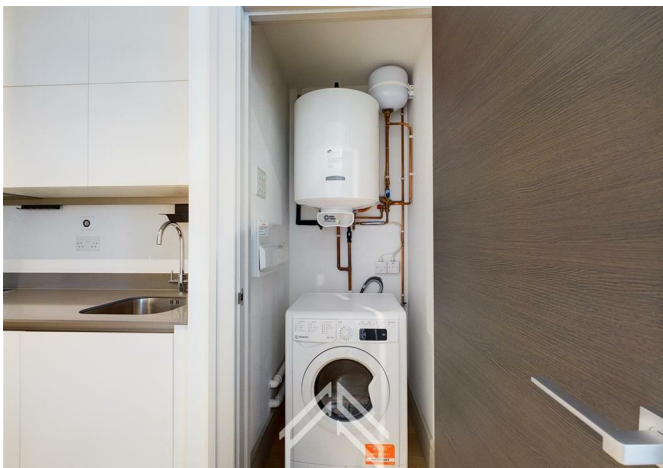
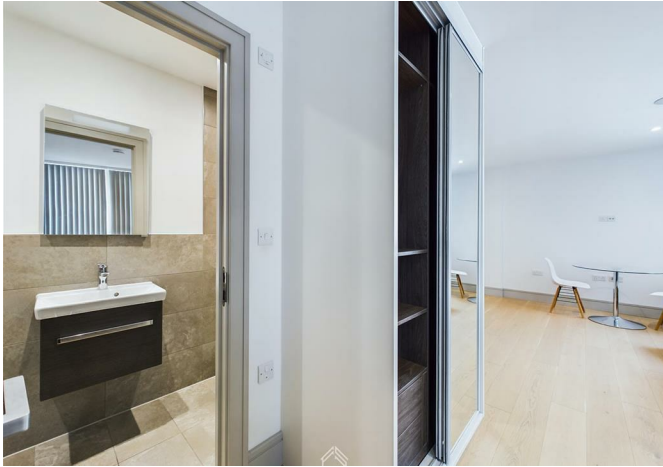




Zenith House, w13 Lawrence Road, London, N15 4FZ  
£1,400



## Zenith House, w13 Lawrence Road, London, N15 4FZ

**£1,400**

This charming studio flat offers an exceptional opportunity for those in search of a cozy and practical living space. Nestled in a coveted locale, this thoughtfully designed studio apartment boasts a unique feature—a delightful balcony that enhances the overall living experience.

Upon entry, you'll be welcomed by a bright and spacious open-plan layout, meticulously crafted to maximize functionality. Seamlessly integrating a snug sleeping area, a compact yet efficient kitchenette, and a comfortable seating space, it facilitates seamless day-to-day living. The contemporary furnishings and soothing neutral palette fashion an atmosphere that exudes both sophistication and warmth.

Ideally situated in a highly sought-after area, this flat is in close proximity to an array of amenities such as shops, dining establishments, and public transportation hubs.



## Description



## Situation

Furnished

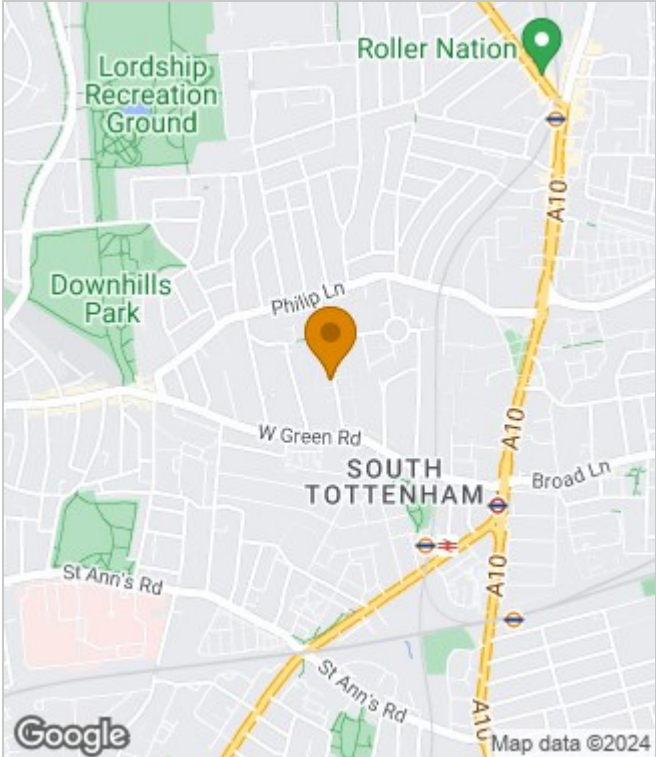
Council Tax Band: B

Available: 10th May 2024

# Floor Plans



# Area Map



# Energy Performance Graph

Energy Efficiency Rating		Current	Potential
Very energy efficient - lower running costs			
(92 plus) <b>A</b>			
(81-91) <b>B</b>			
(69-80) <b>C</b>			
(55-68) <b>D</b>			
(39-54) <b>E</b>			
(21-38) <b>F</b>			
(1-20) <b>G</b>			
Not energy efficient - higher running costs			
<b>England &amp; Wales</b>	EU Directive 2002/91/EC		

These particulars, whilst believed to be accurate are set out as a general outline only for guidance and do not constitute any part of an offer or contract. Intending purchasers should not rely on them as statements of representation of fact, but must satisfy themselves by inspection or otherwise as to their accuracy. No person in this firms employment has the authority to make or give any representation or warranty in respect of the property.