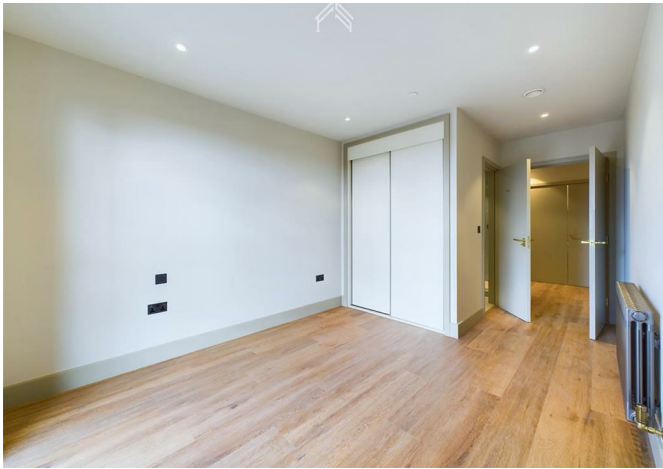




163 The Sessile Ashley Road, London, N17 9ZS
£2,740



163 The Sessile Ashley Road, London, N17 9ZS

£2,740

First 4 Weeks Rent Free / Discover a lifestyle where luxury meets convenience in our designer-crafted residences, complete with 24/7 on-site management and a state-of-the-art gym, all tailored to enhance your daily experience.

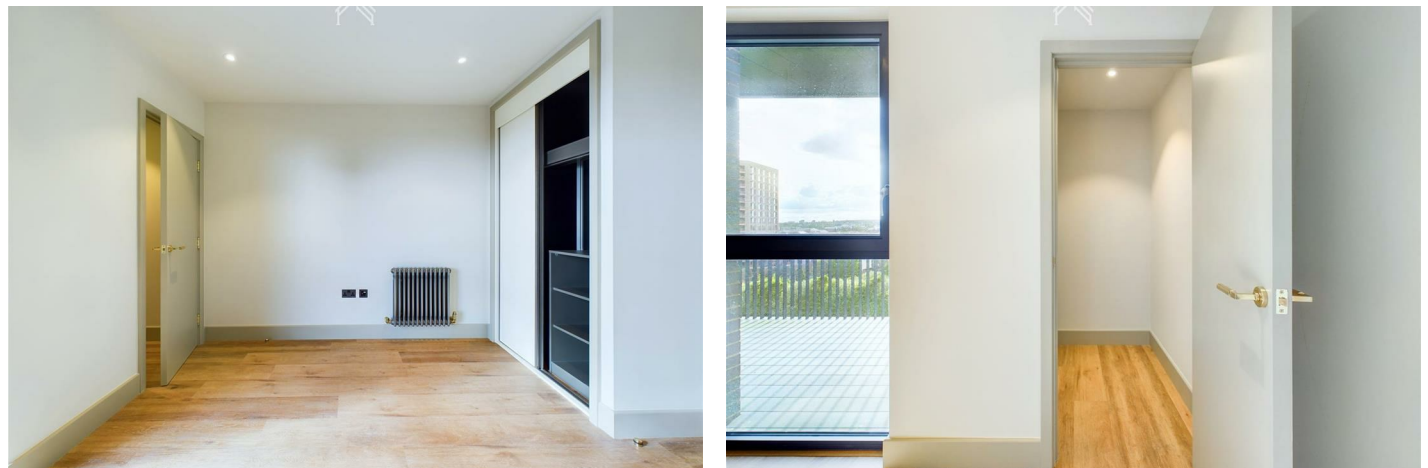
Located on the ground floor, our spacious, air-conditioned gym offers all the equipment expected of a top-tier facility, ensuring no waiting for machines or weights. The serene environment, free from harsh lighting, features elegant burl wood seating for breaks between sets.

The buildings boast a high energy efficiency rating, reflecting our commitment to sustainability. Pet lovers will rejoice at our pet-friendly policy. Stay connected and manage your living experience effortlessly with our resident app. Enjoy exclusive benefits designed specifically for our residents, adding value to your everyday life. Additionally, convenient bike storage and secure parcel lockers are available, meeting the needs of modern urban living.

Description



Situation



Unfurnished
Council Tax Band:
Available:

Floor Plans



The Sessile
- Tottenham Hale

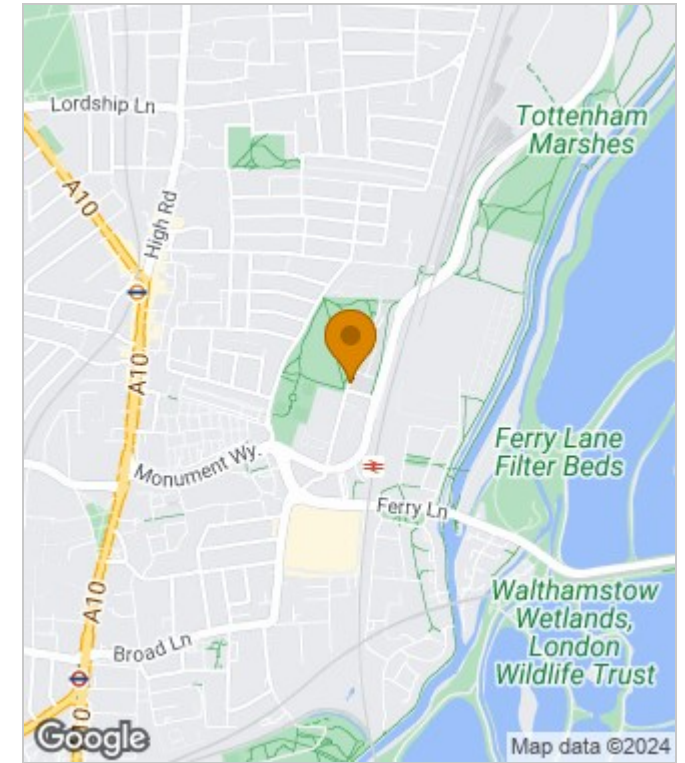
Property Type - Flat
Bedrooms - x2
Bathrooms - x2

Approx. total area
72.65 m²
782 ft²

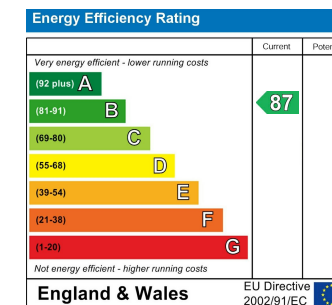
Measurements are approximate
and not to scale in this floor plan.
Provided for illustrative purposes.



Area Map



Energy Performance Graph



These particulars, whilst believed to be accurate are set out as a general outline only for guidance and do not constitute any part of an offer or contract. Intending purchasers should not rely on them as statements of representation of fact, but must satisfy themselves by inspection or otherwise as to their accuracy. No person in this firm's employment has the authority to make or give any representation or warranty in respect of the property.