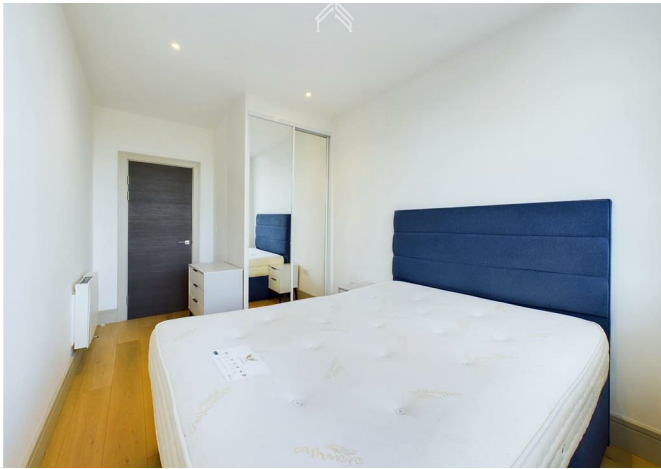


333 Imperial Drive, Broad House, Harrow, Middlesex, HA2 7DP
£1,350



333 Imperial Drive, Broad House, Harrow, Middlesex, HA2 7DP

£1,350

Nestled in North West London, this apartment is 2 minutes walk from Rayners Lane Station, offering direct links to Wembley Stadium, Hammersmith, and Central London. Enjoy the balance of urban life and nature with nearby Roxbourne and Northwick Parks.

The area boasts a variety of shops, restaurants, and two major shopping centers.

Fully-furnished for comfort, it includes a double bed, sofa, ample storage, bedside unit, washing machine, dishwasher, and privacy blinds.

Description



Situation

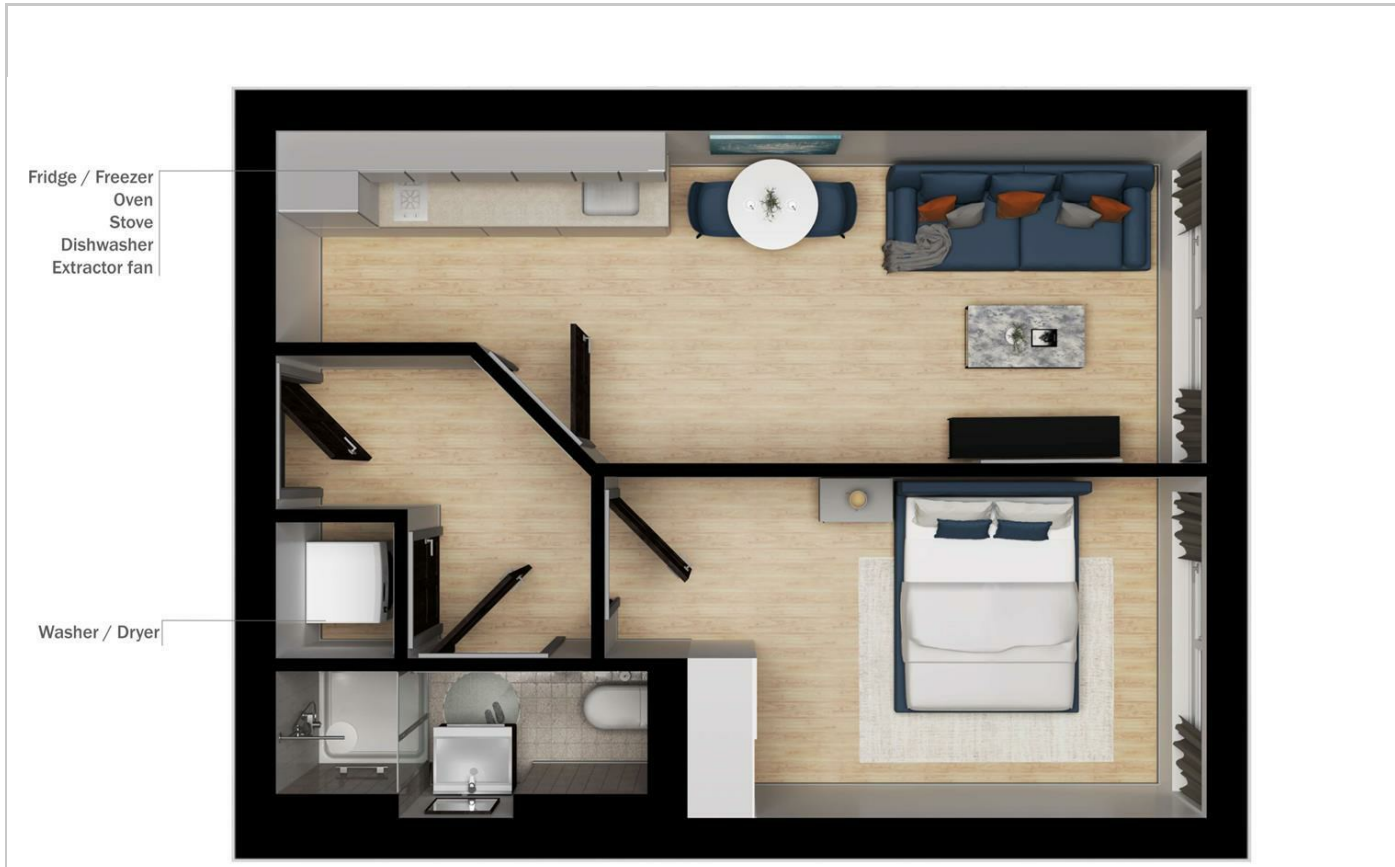


Furnished

Council Tax Band: C

Available:

Floor Plans



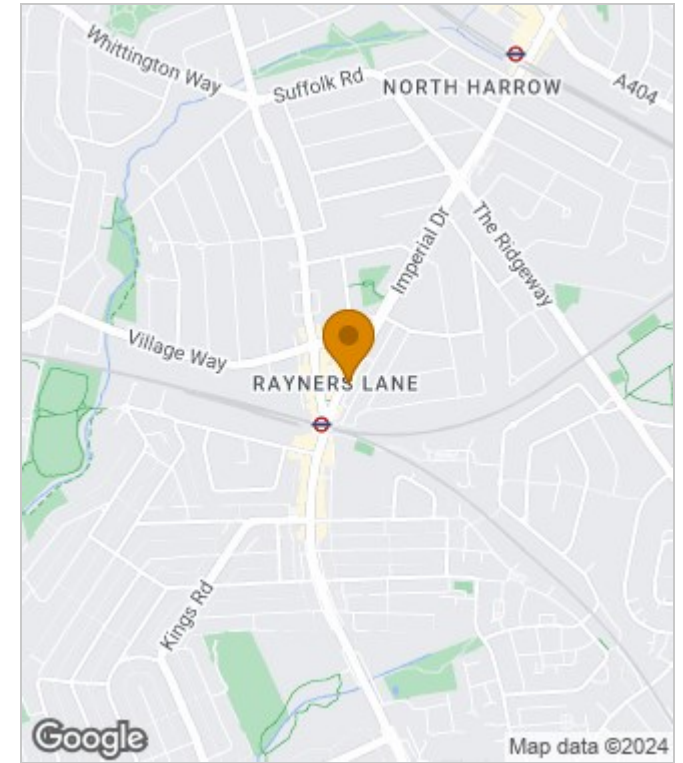
Imperial Drive
- Harrow

Approx. total area
34.44 m²
370.69 ft²
(excluding balconies and terraces)

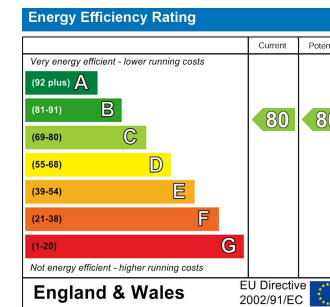
Property Type - Flat
Bedrooms - x1
Bathrooms - x1



Area Map



Energy Performance Graph



These particulars, whilst believed to be accurate are set out as a general outline only for guidance and do not constitute any part of an offer or contract. Intending purchasers should not rely on them as statements of representation of fact, but must satisfy themselves by inspection or otherwise as to their accuracy. No person in this firm's employment has the authority to make or give any representation or warranty in respect of the property.