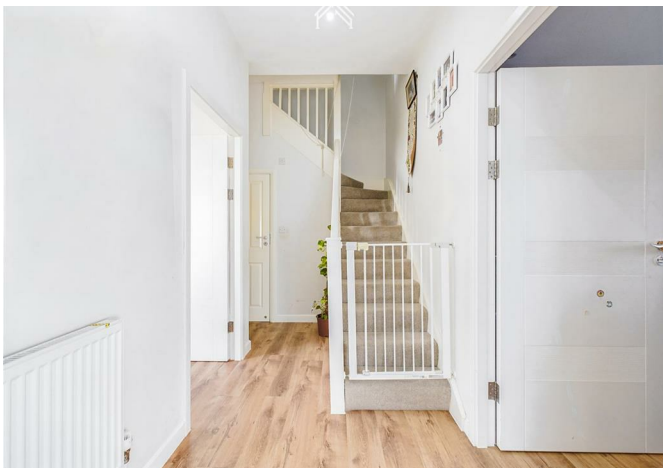


SPENDALE
HOUSE
P RESERVED
PARKING
APARTMENT
No 5.

Spendale House, Apartment 5 The Runway, Ruislip, HA4 6SE
£365,000



Spendale House, Apartment 5 The Runway, Ruislip, HA4 6SE

£365,000

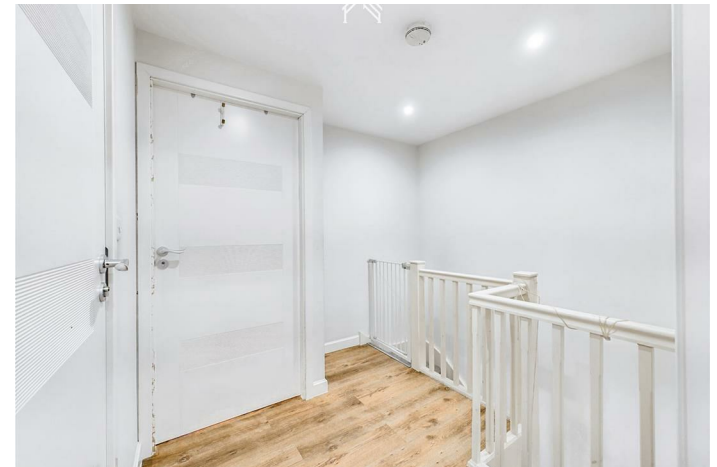
Discover the perfect blend of convenience and style in this two-bedroom, split-level apartment, ideally located just moments away from South Ruislip's bustling shops and transport hubs. This appealing residence, perfect for first-time buyers or investors, boasts smart modern finishes throughout. Enjoy a welcoming entrance hall, a spacious reception area for relaxing and entertaining, a modern guest w/c, and a sleek kitchen/diner equipped with contemporary units and select integrated appliances. The upper floor houses two generous double bedrooms alongside a meticulously appointed family bathroom.

Additional perks include an exclusive parking space for residents. Situated within easy reach of The Old Dairy's shopping and entertainment options, and just steps from South Ruislip's Central Line and national rail services, Spendale House offers swift connections to central London in under 30 minutes, with Metropolitan and Piccadilly Line stations also nearby.

Description



Situation



null
Council Tax Band: C
Available:

Floor Plans



Ground Floor



First Floor

Ruislip
- Middlesex

Property Type - House
Bedrooms - x2
Bathrooms - x1

Approx. total area

81 m²
872 ft²

Measurements are approximate and not to scale in this floor plan. Provided for illustrative purposes.

Living room

5.05 m² x 2.87 m²

Kitchen

5.05 m² max
x 3.05 m² max

Bedroom 1

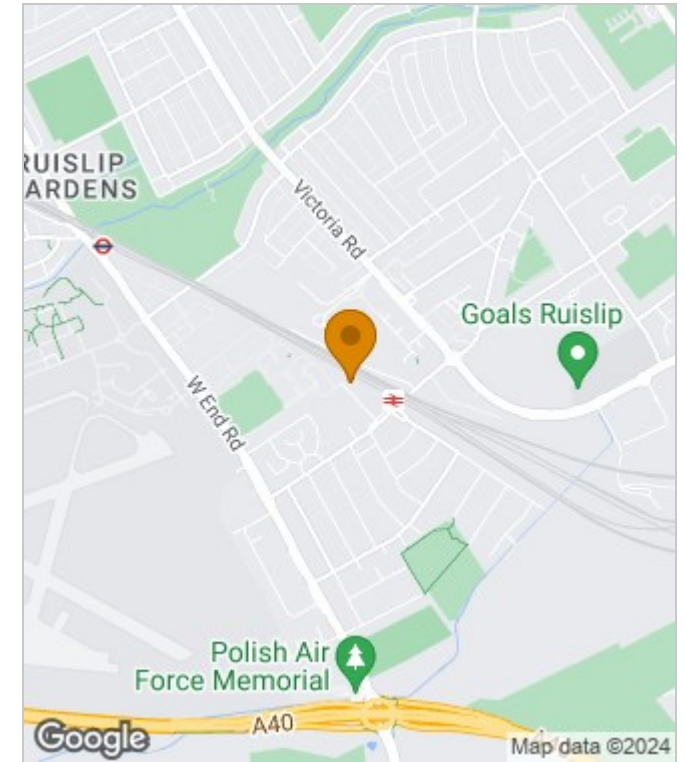
5.11 m² x 2.87 m²

Bedroom 2

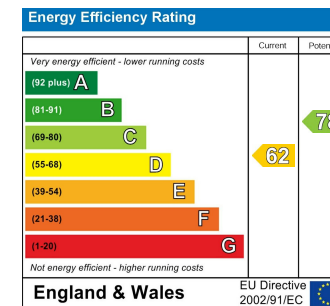
5.11 m² max
x 2.87 m² max



Area Map



Energy Performance Graph



These particulars, whilst believed to be accurate are set out as a general outline only for guidance and do not constitute any part of an offer or contract. Intending purchasers should not rely on them as statements of representation of fact, but must satisfy themselves by inspection or otherwise as to their accuracy. No person in this firm's employment has the authority to make or give any representation or warranty in respect of the property.