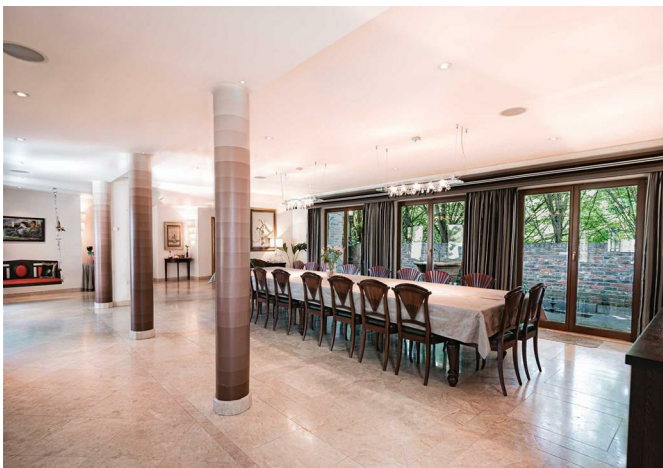




1 Beverley Lane, The Stables, Kingston Upon Thames, KT2 7EE  
£3,750,000





## 1 Beverley Lane, The Stables, Kingston Upon Thames, KT2 7EE

£3,750,000

This remarkable main residence spans an impressive 10,000 square feet and showcases sophisticated and refined design elements, culminating in a lavish and inviting living experience. The ground level encompasses a formal drawing room, a cozy family room, an open-plan dining room, a study, and a modern kitchen equipped with top-tier appliances. Noteworthy additions consist of a cinema room with a bar, a gym, a steam room, and a spacious utility room.

Moving upstairs, the primary suite treats you to a balcony and a delightful bathroom within the octagonal turret. Four ensuite double bedrooms with integrated wardrobes offer generous accommodations. The second floor provides a versatile space that can serve as an additional bedroom or a reception area. The previously used stables have been skillfully transformed into three contemporary self-contained maisonettes, composing an elegant entrance courtyard.

Nestled in the esteemed Coombe residential estates, Beverley Lane presents a tranquil environment in close proximity to exceptional schools, encompassing a variety of private, public, and international options.



**Description**

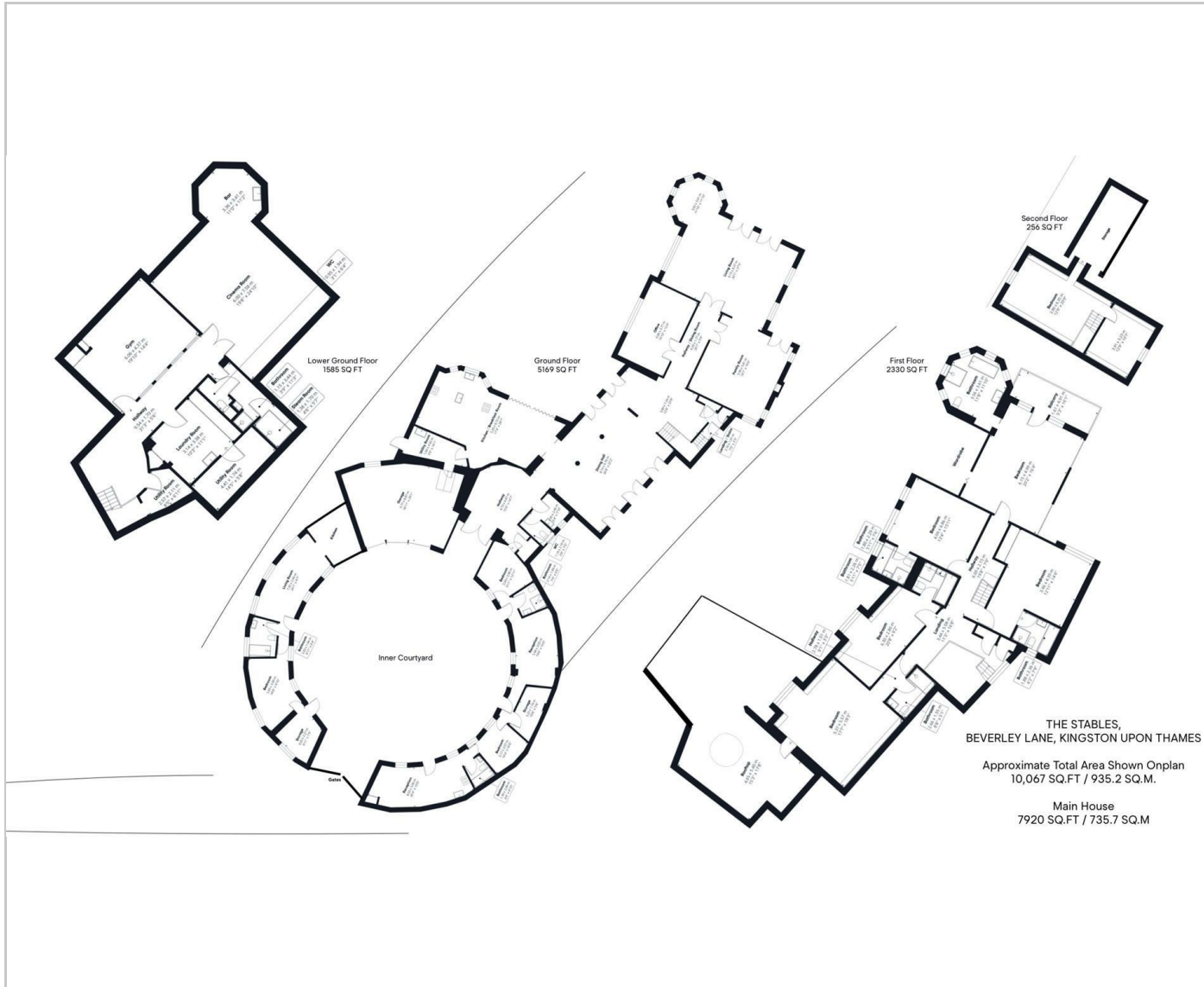


**Situation**

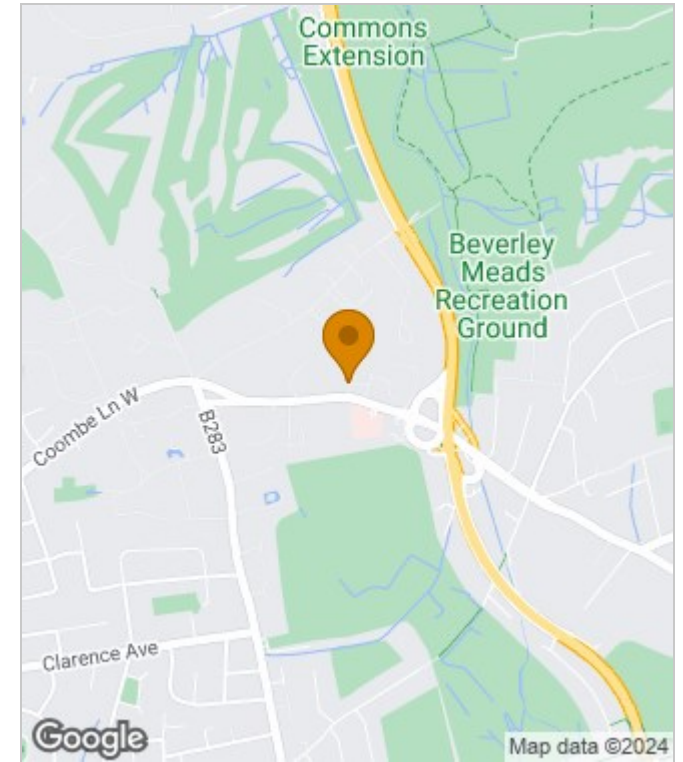


null  
Council Tax Band: H  
Available:

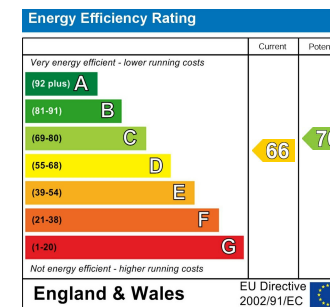
## Floor Plans



## Area Map



## Energy Performance Graph



These particulars, whilst believed to be accurate are set out as a general outline only for guidance and do not constitute any part of an offer or contract. Intending purchasers should not rely on them as statements of representation of fact, but must satisfy themselves by inspection or otherwise as to their accuracy. No person in this firm's employment has the authority to make or give any representation or warranty in respect of the property.