



172 Bream Close, London, N17 9DJ
£285,000



172 Bream Close, London, N17 9DJ

£285,000

This apartment is in the centre of the rapidly developing Tottenham Hale neighbourhood. Bream Close is ideally situated to take advantage of the newly constructed Tottenham Hale retail park and the regular transport links throughout the capital by both rail and underground, in addition to the appeal of having an afternoon stroll down the riverfront.

The Walthamstow Wetlands, the largest man-made wetlands in Europe, are only a short distance from this home if you're looking for a change of pace after a long day of commuting or just want to reconnect with nature.

This property, which offers the ideal harmony between city life in London and nature, is ideal for investors as well as homebuyers.

Description

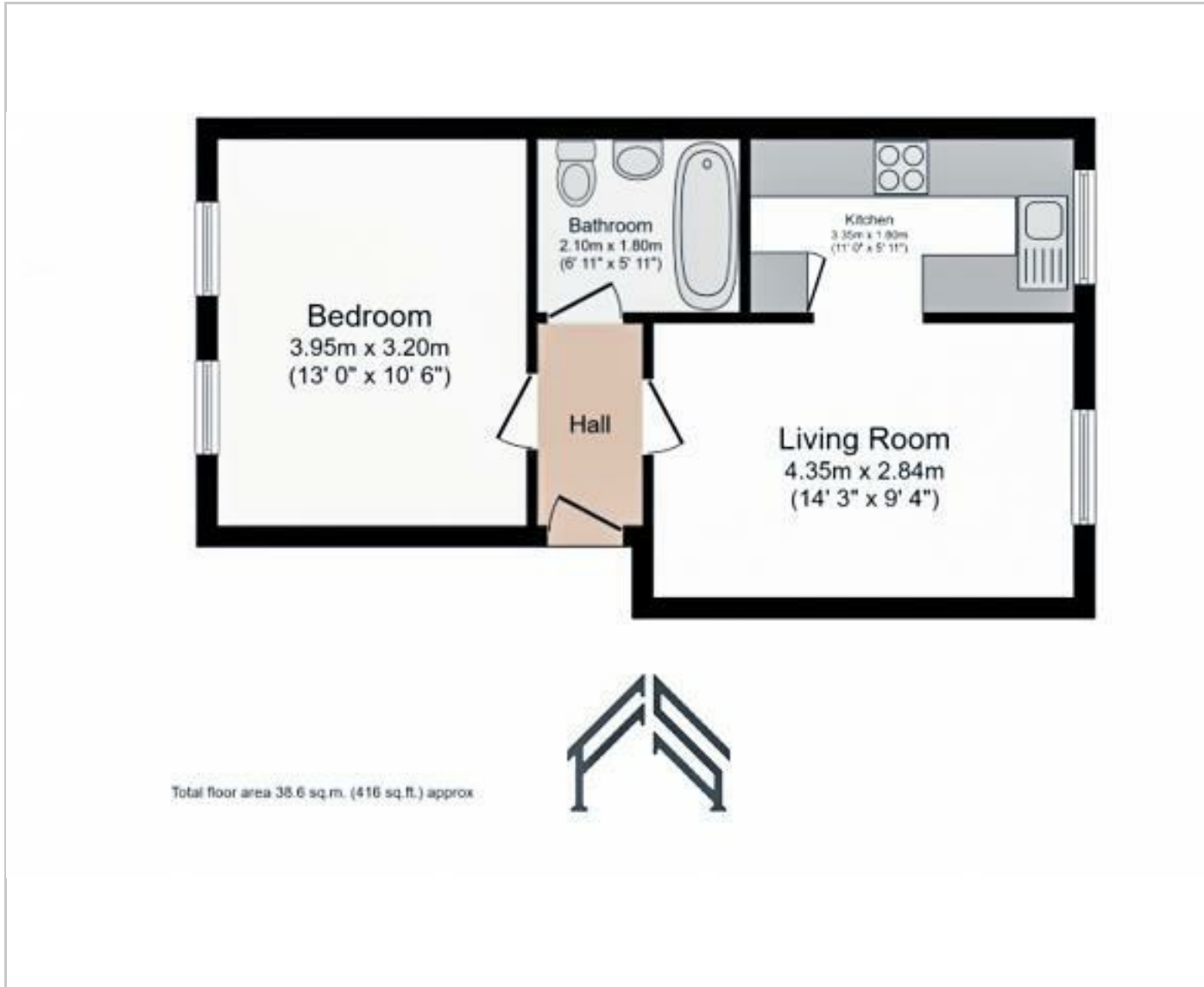


Situation

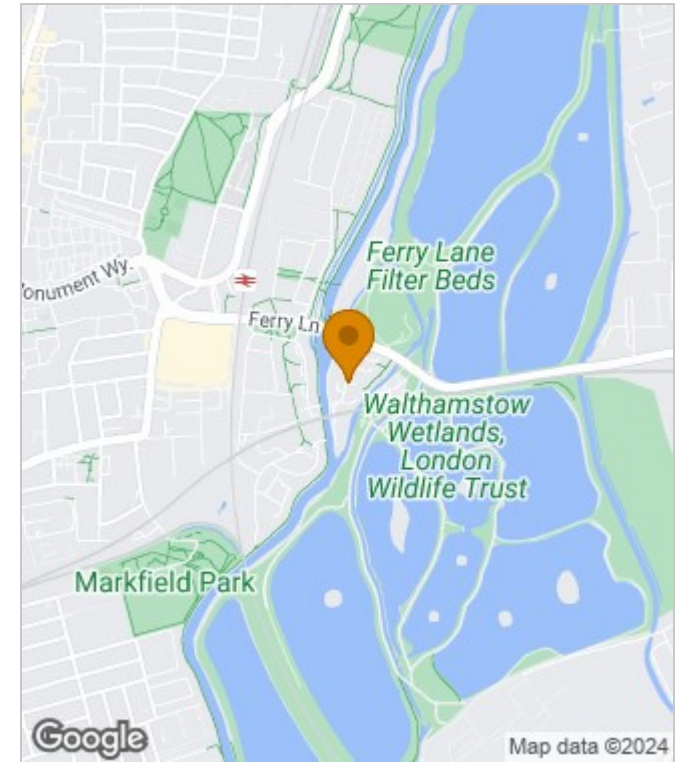


null
Council Tax Band: B
Available:

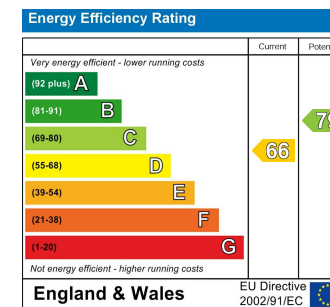
Floor Plans



Area Map



Energy Performance Graph



These particulars, whilst believed to be accurate are set out as a general outline only for guidance and do not constitute any part of an offer or contract. Intending purchasers should not rely on them as statements of representation of fact, but must satisfy themselves by inspection or otherwise as to their accuracy. No person in this firm's employment has the authority to make or give any representation or warranty in respect of the property.