



15 Selden Walk, London, N7 7RL
£450,000



15 Selden Walk, London, N7 7RL

£450,000

Your future three-bedroom maisonette awaits in the coveted Wesley Close, just moments away from the bustling attractions of Finsbury Park. This inviting home boasts a spacious reception room with direct balcony access on the first floor, while the second floor features three bedrooms and a bathroom—all maintained in excellent condition.

Selden Walk provides seamless access to various local amenities, including shops, cafes, and restaurants. Exceptional transportation options, with nearby bus stops and Finsbury Park Station, guarantee swift and convenient connectivity to The City.

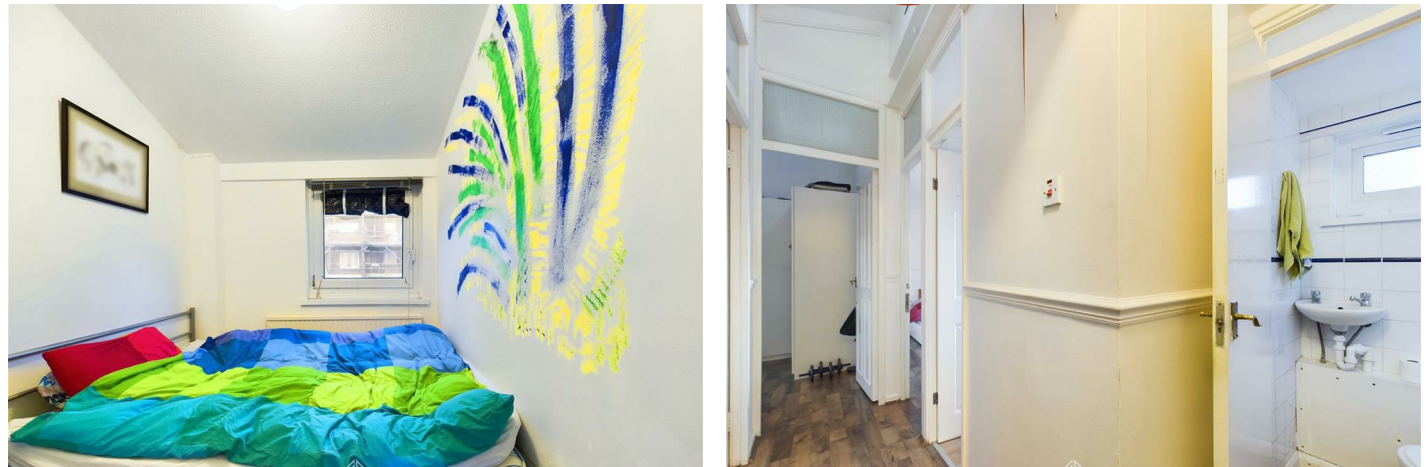
Step into your fully fitted kitchen, where ample cupboard space, an integrated gas hob and electric oven, a washing machine, and a full-size fridge freezer await.

Ideally situated just minutes from Finsbury Park station on a sought-after residential road, your new neighborhood is a hub of well-loved local establishments, including restaurants, bars, independent shops, and sports and arts facilities. The closest underground station, Finsbury Park (Zone 2), serviced by the Victoria, Piccadilly, and National Rail Lines, ensures convenient commuting. Local primary and secondary schools have earned favorable ratings, with many outstanding features highlighted in the most recent Ofsted reports. For additional insights, explore our Neighbourhoods Guide.

Description

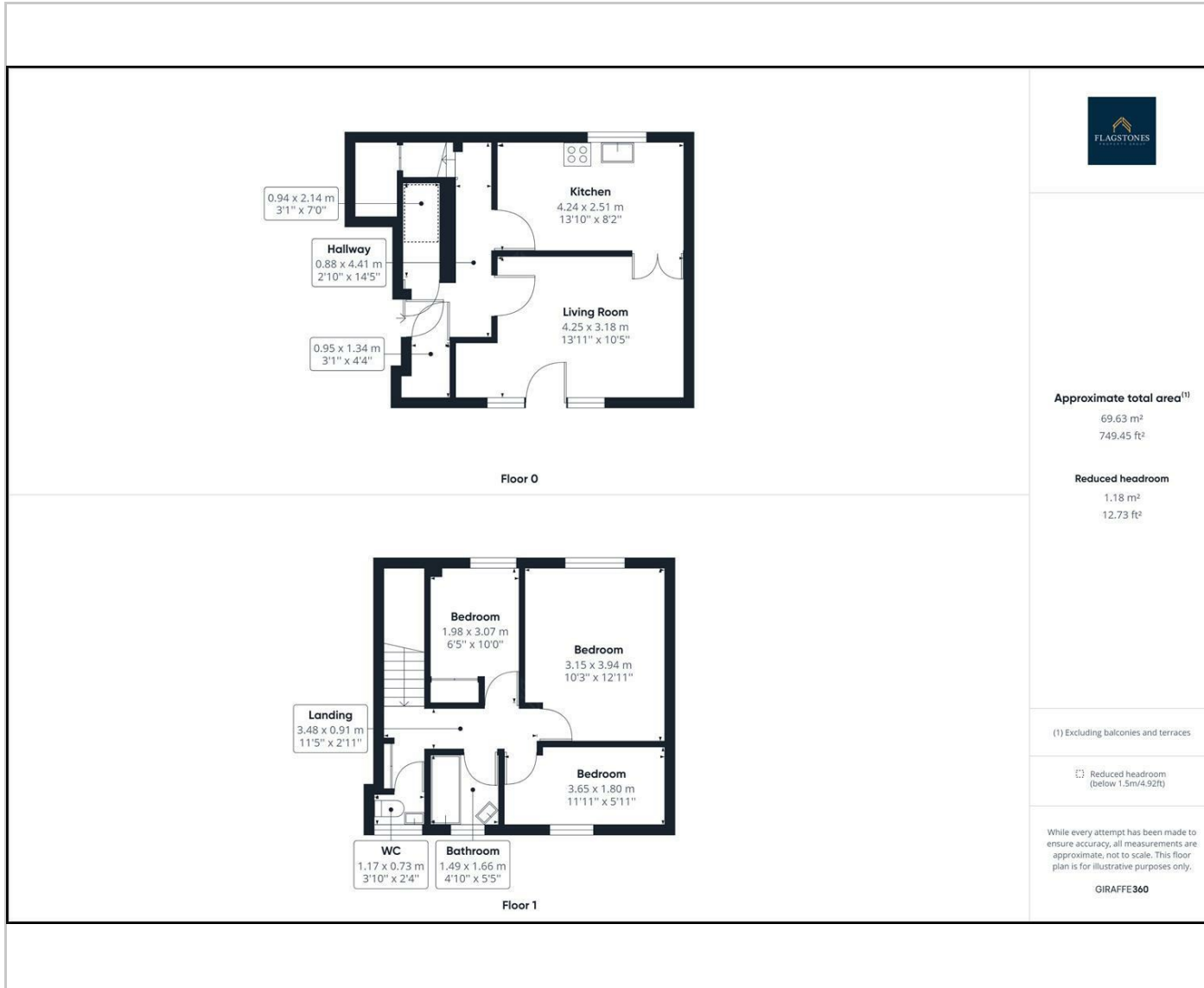


Situation

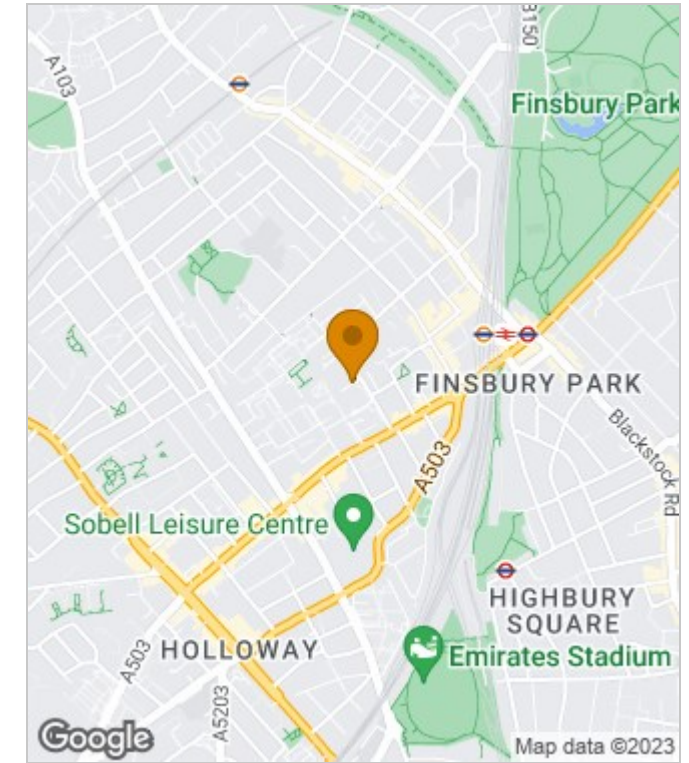


null
Council Tax Band:
Available:

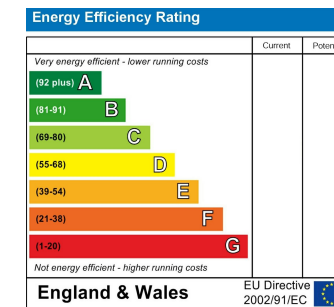
Floor Plans



Area Map



Energy Performance Graph



These particulars, whilst believed to be accurate are set out as a general outline only for guidance and do not constitute any part of an offer or contract. Intending purchasers should not rely on them as statements of representation of fact, but must satisfy themselves by inspection or otherwise as to their accuracy. No person in this firm's employment has the authority to make or give any representation or warranty in respect of the property.