



103 Southwick Street, Devonport, London, W2 2QH
£475,000



103 Southwick Street, Devonport, London, W2 2QH

£475,000

This property boasts spacious living areas and includes a reception room with plenty of room for a dining area, a well-equipped kitchen, a comfortable master bedroom, a modern tiled bathroom, and a hallway with extra storage.

Nestled around beautifully landscaped communal gardens, this area showcases private seating spots, pathways, and serene retreats, offering a peaceful escape from the bustling city life.

The Devonport is a purpose built development which benefits from excellent security with 24 hour portage and extensive communal gardens. The development is located close to a wealth of transport links and central London locations. Nearby underground stations include Edgware Road, Marble Arch, and Paddington Station (Heathrow Express, Mainline & Elizabeth Line). For motorists the A40 is also nearby.

Description



Situation

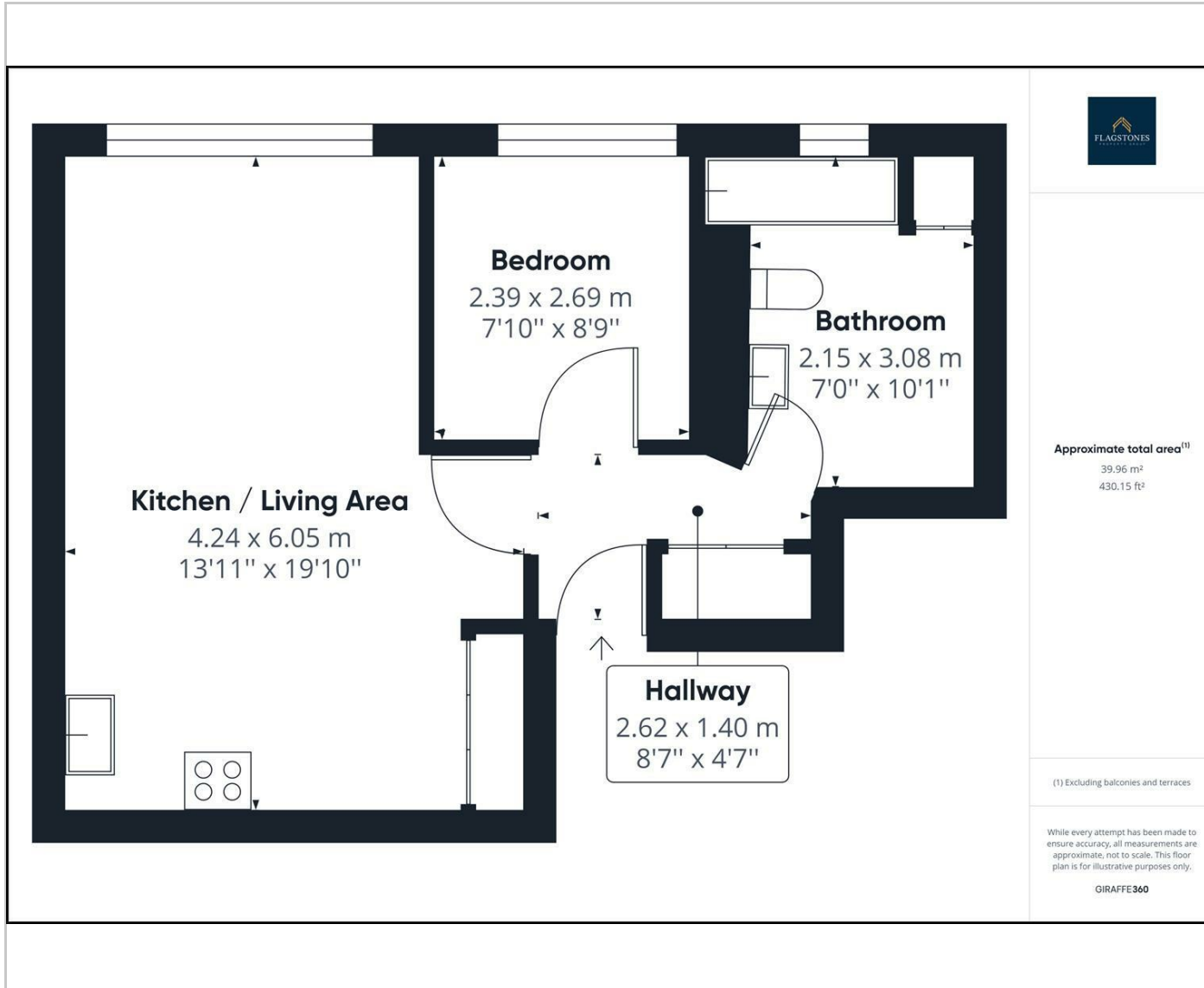


null

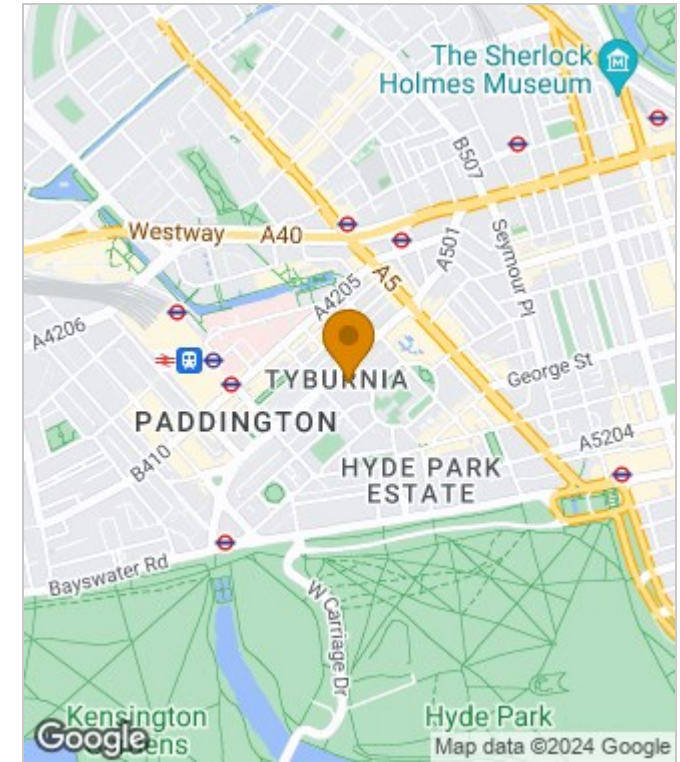
Council Tax Band: E

Available:

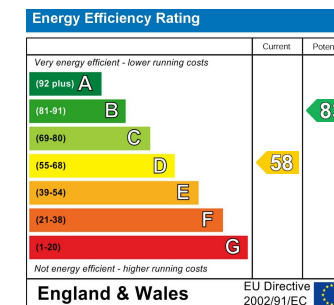
Floor Plans



Area Map



Energy Performance Graph



These particulars, whilst believed to be accurate are set out as a general outline only for guidance and do not constitute any part of an offer or contract. Intending purchasers should not rely on them as statements of representation of fact, but must satisfy themselves by inspection or otherwise as to their accuracy. No person in this firm's employment has the authority to make or give any representation or warranty in respect of the property.