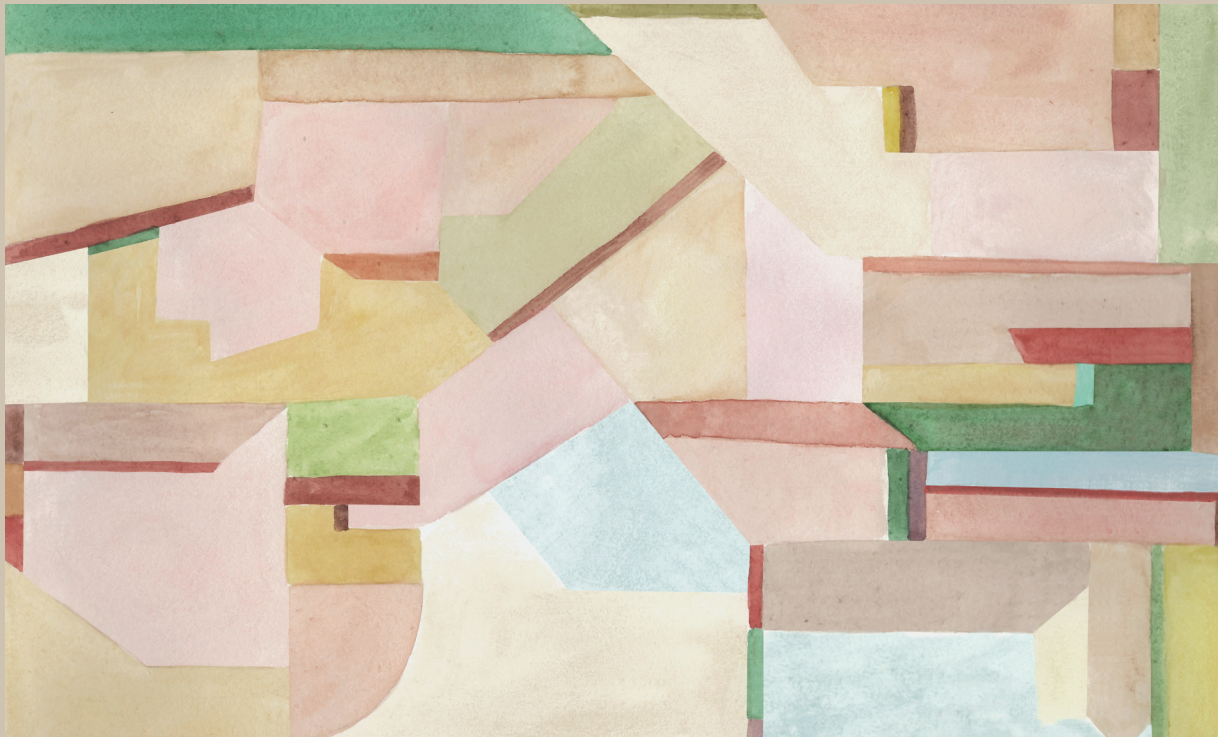


ANDO

Living



['ændo]

THIS IS NOT JUST AN APARTMENT TO *STAY AND LIVE*, BUT
A *LIFESTYLE-SERVICED RESIDENCE* BUILT AROUND *BUSINESS, LEISURE* AND
CONNECTING A COMMUNITY OF TRAVELLERS AND LOCALS A LIKE.

ANDO LIVING

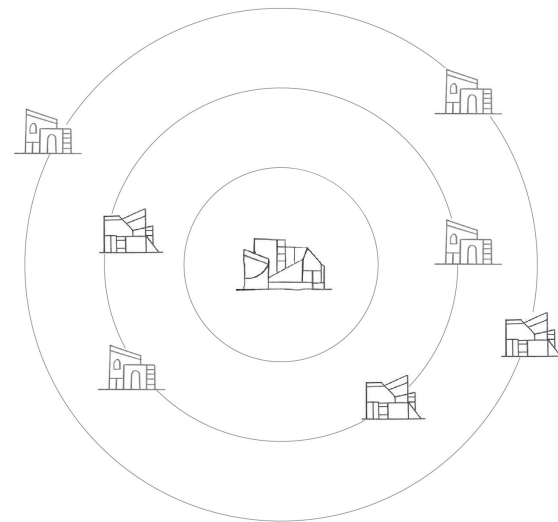
YOUR NEIGHBOURHOOD



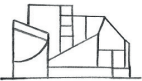
WE ARE ANDO LIVING. YOUR LOCAL FRIEND WHO WILL ENSURE YOU HAVE **A TASTE OF ALL THE BEST THINGS** THE CITY HAS TO OFFER AND **FEEL THE PRIDE WE HAVE FOR OUR NEIGHBOURHOOD.**

A CURATION OF **CLUBS, HOUSES** AND **FLATS**, BUILT TO MEET THE **PRACTICAL** AND **EMOTIONAL NEEDS** OF TODAY'S TRANSIENT EXECUTIVE, **A HOME FROM HOME.**

ANDO LIVING IS CURRENTLY OPERATING 5 HOUSES IN LISBON AND IS EXPANDING INTO OTHER CITIES IN PORTUGAL, SPAIN, GREECE, TURKEY AND DUBAI. 5 NEW CLUBS AND 8 ADDITIONAL NEW HOUSES HAVE BEEN SIGNED IN LISBON, PORTO, ALENTEJO AND ISTANBUL.



LEFT IMAGE
CONCEPT ILLUSTRATION



CLUBS

CLUBS ARE THE HEART OF ANDO LIVING. THEY CONNECT RESIDENTS TO THE LOCALS A LIKE AND TO THE NEIGHBOURHOOD. RESIDENTS CAN ENJOY THE FACILITIES OF THE CLUB, WHERE THEY GAIN EXCLUSIVE ACCESS TO THE RESTAURANT, BAR, CAFÉ, CONCEPT STORE, RENTABLE LIVING ROOMS, GYM AND POOL. IT IS WHERE RESIDENTS ARE OFFERED EXQUISITE HOSPITALITY.

*ALFAMA CLUB, LISBON
ALCANTARA CLUB, LISBON
LIBERDADE CLUB, LISBON
VILA VIÇOZA CLUB, ALENTEJO
TOMTOM CLUB, ISTANBUL*



HOUSES

HOUSES ARE RESIDENCE BUILDINGS CENTRALLY LOCATED WITH APARTMENTS DESIGNED AND MANAGED BY ANDO LIVING. THE RESIDENTS WHO STAY IN THE HOUSES ARE ENTITLED TO FREE ACCESS TO THE FACILITIES OF THE CLUBS, USUALLY AT A WALKING DISTANCE. THEY CAN SPEND THEIR DAYS IN THE CLUBS, WHERE THE SWIMMING POOL, GARDEN AND GYM ARE LOCATED.

*AUGUSTA, LISBON
SANTA JUSTA 77, LISBON
SANTA JUSTA 79, LISBON
SAO NICOLAU, LISBON
DOURADORES, LISBON
MARQUES DOS ABRANTES, LISBON
SANTA CATARINA, PORTO
TOMTOM, ISTANBUL*



FLATS

FLATS ARE CURATED BY THIRD PARTIES BUT MANAGED BY ANDO LIVING. SCATTERED AROUND THE CITY, THEY MAY BE ENTIRE BUILDINGS OR INDIVIDUAL APARTMENTS, BUT ALL SPECIAL AND CENTRALLY LOCATED. THE RESIDENTS OF FLATS ARE ALSO ENTITLED TO FREE ACCESS TO THE FACILITIES OF THE CLUBS, USUALLY AT A WALKING DISTANCE.

*SOON AVAILABLE IN LISBON, PORTO, ALGARVE, SINTRA,
ALENTEJO AND ISTANBUL*

TOP IMAGE
ALFAMA CLUB POOL RENDERING

CLUBS

SIGNATURE SOCIAL FUNCTIONS



CONCEPT HUB

CONCEPT HUBS INCLUDE A CONCEPT STORE WITH A SELECTION FROM LOCAL DESIGNERS, A TAKE-AWAY CORNER, A STYLISH RESTAURANT & BAR USUALLY WITH A TERRACE OR COURTYARD AND A PRIVATE DINING ROOM. COMBINING ELEMENTS LIKE FOOD, CULTURE AND COMMERCE, AN AUTHENTIC EXPERIENCE CAN BE CREATED - A CURATED LIFESTYLE CHARACTERISED BY THE LOCAL CULTURE.

COOL WORKING SPACE

CUSTOMERS' EXPERIENCES CAN BE ENHANCED BY MERGING THE LIVING AND WORKING ENVIRONMENTS. THE LIVING-WORKING SPACES WOULD BECOME THE ESSENTIALS OF DAILY LIFE AND INCLUDE RENTABLE LIVING ROOMS AS WELL AS A LOUNGE AND PRIVATE PHONE BOOTHS.

EXTENDED LIVING

SPECIALLY DESIGNED PRIVATE LIVING ROOMS WOULD ALWAYS BE READY AT THE CONVENIENCE OF RESIDENTS DAILY OR FOR SPECIAL OCCASIONS.

WELLNESS

THE WELLNESS FACILITIES WILL INCLUDE A FULLY EQUIPPED GYM, AND OCCASIONALLY A POOL AND A SPA. RESIDENTS THRIVE BY MAINTAINING THEIR PHYSICAL AND MENTAL CONSCIOUSNESS IN STYLISH, SERENE AND COMFORTABLE SPACES.

LEFT IMAGE
ALFAMA CLUB RESTAURANT

PROGRESSIVE NOMADS

A NEW DEFINITION OF COMMUNITY

“
*To make nomadic living effortless,
seamless and pleasurable.*
”

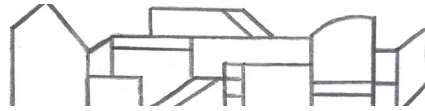
THE BRAND IS IMAGINED AND DESIGNED TO CATER TO THE NEEDS OF
THE MODERN TRAVELLERS: PROGRESSIVE NOMADS (PRO-MADS)

PROMADS WORK, TRAVEL AND LIVE TRANSIENTLY, EXPERIENCING
NEW CULTURES AND PLACES. TRAVEL, WHETHER FOR WORK OR PURE
PLEASURE, HAS TAKEN ON A NEW FORM. IN SEARCH OF GENUINE
EXPERIENCES IN NEW CITIES, SOAKING UP THE JUICES OF LOCAL
SPECIALITIES IN CROWDED LOCAL BARS, OFF THE BEATEN TRACK OF
TRADITIONAL TOURIST.

THE PROMAD SEARCHES FOR REAL-LIFE-MOMENTS TO LIVE AND FEEL
AT HOME.



TOP IMAGE
CONCEPT ILLUSTRATION



LISBON

THE EMERGING CAPITAL

ONE OF THE MOST SOUGHT-AFTER EUROPEAN CAPITALS OF THE MOMENT — AND ONE OF THE WORLD'S SAFEST CITIES — LISBON BRINGS PAST AND PRESENT TOGETHER LIKE NO OTHER.

LISBON IS A CITY FULL OF BEAUTIFUL CONTRASTS. DELIGHTFUL OLD QUARTERS ARE FOUND RIGHT NEXT TO AVANT-GARDE ARCHITECTURE. THE GREAT CONTRAST OF VIBRANT CULTURAL SCENES AND STREETS OF OLD BOROUGHS CONSTRUCT THE UNIQUE CITYSCAPE OF LISBON. CONTRASTS COULD ALSO BE FOUND IN DELICACIES, WHERE TRADITIONAL PORTUGUESE CUISINE AND EXCITING NEW DISHES ARE SERVED ON THE SAME TABLE. YOU MIGHT ALSO

SPOT LOCAL SMALL BUSINESSES AND INTERNATIONAL BRANDS COEXISTING ON THE SAME STREETS.

THERE IS AN ARRAY OF RENOWNED SCENIC VIEWPOINTS FROM ITS RIVER PROMENADES AND BEACHES. THE SPOTS STRETCH FROM THE NORTHERN COAST OF CASCAIS TO THE SOUTHERN SANDS OF COSTA DA CAPARICA - THE PORTUGUESE CAPITAL IS THE HUB OF IT ALL.

IF YOU EVER FIND YOURSELF NEEDING A BREAK FROM SUCH PARADISE ON EARTH, LISBON'S INTERNATIONAL AIRPORT IS JUST A SHORT FLIGHT AWAY FROM MOST EUROPEAN CAPITALS.

TOP IMAGE
ALFAMA NEIGHBOURHOOD
IN LISBON, PORTUGAL

AVENIDA DA LIBERDADE

LISBON'S 5TH AVENUE



ANDO LIVING LIBERDADE CLUB IS LOCATED A FEW STEPS AWAY FROM THE MAIN AND MOST PRESTIGIOUS BOULEVARD OF LISBON WHICH CONNECTS MARQUÊS DE POMBAL ROUNDABOUT (THE GATEWAY TO THE CITY'S BUSINESS DISTRICT) WITH THE HEART OF LISBON WHERE ONE CAN FIND ALL OF THE CITY'S TOP ATTRACTIONS.

AVENIDA DA LIBERDADE DISTRICT IS PART OF LISBON'S MOST DYNAMIC DEVELOPMENT AREAS AND ONE OF THE MAIN RESIDENTIAL, BUSINESS, AND TOURISTIC DESTINATIONS OF THE CAPITAL ALONGSIDE BAIXA, CHIADO AND BELÉM.

THIS MAJESTIC BOULEVARD WITH ITS MATURE TREES AND LARGE SIDEWALKS IS CONSIDERED THE HIGH-END HUB OF THE CITY'S DOWNTOWN AND IS POPULARLY REFERRED TO AS THE CHAMPS-ÉLYSÉES OF LISBON. FROM INTERNATIONAL LUXURY RETAIL BRANDS AND CRITICALLY ACCLAIMED CUISINE TO SOME OF THE BEST HOTELS IN TOWN, THIS DISTRICT GATHERS THE BEST OF LISBON IN ONE PRIME LOCATION.

TOP IMAGE
VIEW OF AVENIDA DA LIBERDADE FROM MARQUÊ DE POMBAL
SQUARE TO THE TAGUS RIVER

“
the Portuguese city
caters to every taste
”



PLACES OF INTERESTS
1. MARQUES DE POMBAL / 2. ROSSIO SQUARE / 3. ELEVATOR SANTA JUSTA / 4. CASTLE SAO JORGE / 5. SANTA CATARINA VIEWPOINT / 6. RIBEIRA / TIME OUT MARKET / 7. PRAÇA DO COMÉRCIO SQUARE / 8. SANTA APOLONIA CRUISE SHIP TERMINAL



RIGHT IMAGE
ILLUSTRATION OF THE VIEW
ALONG WITH TAGUS RIVER

ANDO LIVING

LIBERDADE CLUB OVERVIEW



“
a renovated *historical architecture*
for *modern travellers*
”

HISTORICAL BUILDING

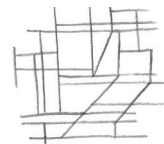
THE BUILDING RUA ALEXANDRE HERCULANO WAS BUILT IN 1889 AND COMPRISES OF 6 FLOORS ABOVE GROUND.

THE GROUND FLOOR, PARTS OF THE FIRST FLOOR AND THE BASEMENT WERE USED FOR COMMERCIAL PURPOSES AND WERE DIVIDED INTO 4 DIFFERENT STORES. PARTS OF FLOOR 1 AND FLOORS 2 TO 5 WERE USED FOR RESIDENTIAL PURPOSES.

NEW PROJECT

IT IS A REHABILITATION PROJECT THAT CONVERTS THE EXISTING BUILDING INTO ONE OF THE FIRST ANDO CLUBS IN LISBON. HISTORICAL AND ARCHITECTURAL ELEMENTS OF THE ORIGINAL 1889 BUILDING WOULD BE PRESERVED AND THE SPACIOUSNESS WILL BE ENHANCED BY ADDING TWO FLOORS TO THE EXISTING STRUCTURE AND A ROOF-TOP POOL.

THE ARCHITECTURAL PROJECT COVERS 3,703 SQM OF GROSS CONSTRUCTION AREA (INCLUDING THE RETAIL BASEMENTS).



LEFT IMAGE
ANDO LIVING LIBERDADE CLUB
RENDERING



LIBERDADE CLUB

TOURISTIC APARTMENTS
2,454 SQM, 42 UNITS

RETAIL
658 SQM, 2 UNITS

COMMON & TECHNICAL AREA
635 SQM

TOTAL CONSTRUCTION AREA
3,747 SQM, 44 UNITS



APARTMENTS

42 LUXURY TOURISTIC APARTMENTS, UNDER THE “ANDO LIVING” BRAND WILL BE DEVELOPED AND STYLED BY AWARD-WINNING DESIGNER AVROKO. IN ACCORDANCE WITH ANDO LIVING STANDARDS, THESE UNITS WILL HAVE THE LUXURY OF A FIRST-CLASS HOTEL WITH THE FAMILIAR COMFORT OF A HOME IN ONE OF LISBON’S TRENDIEST NEIGHBOURHOODS.

EACH APARTMENT WILL BE FULLY EQUIPPED WITH A KITCHEN, LIVING AND WORKING AREA, WHILE ALSO BENEFITTING FROM A WIDE RANGE OF ON-DEMAND SERVICES, SUCH AS: CONCIERGE SERVICE, ROOM SERVICE, DRY CLEANING & LAUNDRY.

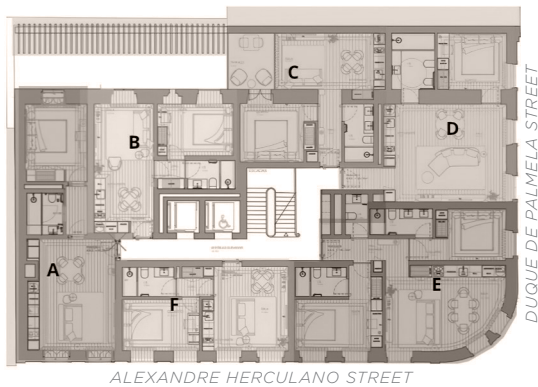
CLUB

LIBERDADE CLUB WILL OFFER RESIDENTS STATE-OF-THE-ART HOTEL-LIKE AMENITIES (ROOFTOP POOL & TERRACE, EXTENDED LIVING AND GYM), AS WELL AS LIVING SPACES THAT BRING LIKE-MINDED PEOPLE TOGETHER, IN AN ENERGISING AND ANCHORED SETTING.

CLUB FACILITIES WILL INCLUDE A CONCEPT STORE, RESTAURANT, BAR, PRIVATE DINING ROOM, RENTABLE LIVING ROOM, LOUNGE AND COOL WORKING FACILITIES.

TOP IMAGE
LIBERDADE CLUB
ROOFTOP POOL RENDERING

ANDO LIVING



CEILING HEIGHTS

1-4TH FLOORS - 3,25M
 5-6TH FLOORS - 3,10M
 7TH FLOOR - 2,50M

FLOOR PLANS AREAS

FROM 1-6TH FLOORS

T1A 63,35 SQM
 T1B 47,45 SQM
 T1C 45,95 SQM
 T1D 65,75 SQM
 T2E 85,30 SQM
 T1F 44,80 SQM

FROM 7TH FLOOR

T1A 61,55 SQM
 T1B 47,45 SQM
 T1C 45,95 SQM
 T1D 60,25 SQM
 T2E 69,4 SQM
 T1F 54,15 SQM

TOTAL PER FLOOR 353 SQM

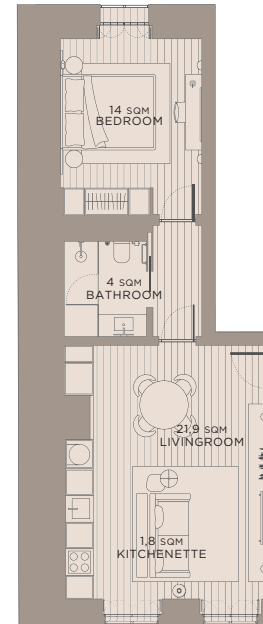
TOTAL FLOOR 339 SQM

6 APARTMENTS PER FLOOR

TOP IMAGE
 LIBERDADE CLUB APARTMENT
 RENDERING

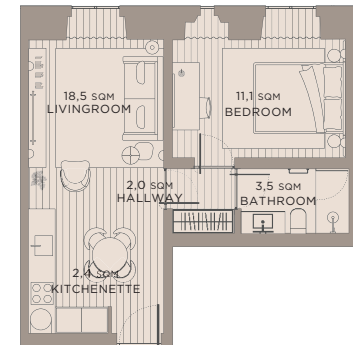
LIBERDADE CLUB

APARTMENT PLANS



APARTMENT T1A

GROSS PRIVATE AREA 63,35 SQM
CEILING HEIGHT 3,10 - 3,25 M
EXPOSITION: ALEXANDRE HERCULANO STREET +
COURTYARD
FLOOR 1-6

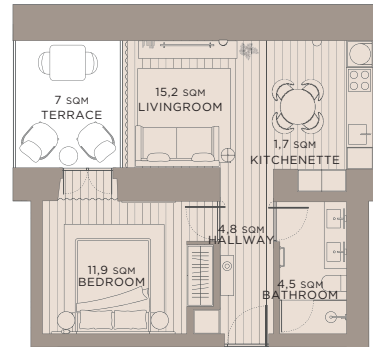


APARTMENT T1B

GROSS PRIVATE AREA 47,45 SQM
CEILING HEIGHT 3,10 - 3,25 M
EXPOSITION: COURTYARD
FLOOR 1-6

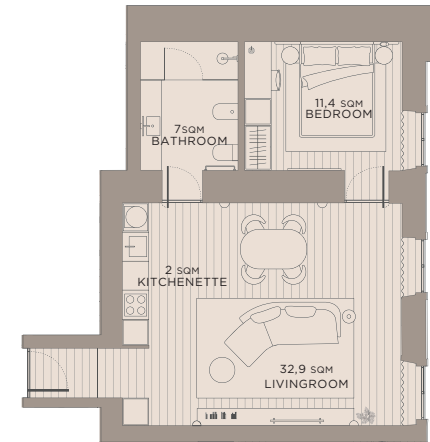


LEFT IMAGE
LIVING ROOM, APARTMENT T1A
RENDERING



APARTMENT T1C

GROSS PRIVATE AREA 45,95 SQM
TERRACE 7 SQM
CEILING HEIGHT 3,10 - 3,25 M
EXPOSITION: COURTYARD
FLOOR 1-6



APARTMENT T1D

GROSS PRIVATE AREA 64,75 SQM
CEILING HEIGHT 3,10 - 3,25 M
EXPOSITION: DUQUE DE PALMELA STREET
FLOOR 1-6

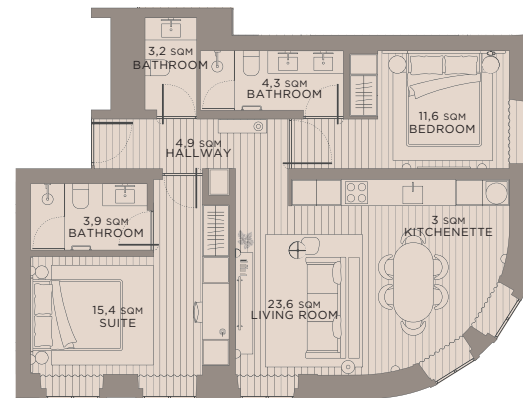


LEFT IMAGE
BEDROOM, APARTMENT T1D
RENDERING



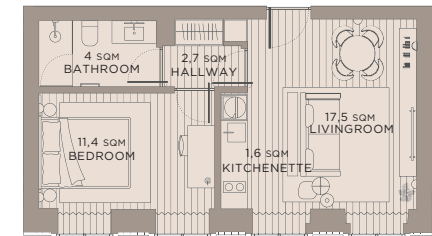
TOP IMAGE
LIVING ROOM, APARTMENT T2E
RENDERING

BOTTOM IMAGE
BEDROOM, APARTMENT T2E
RENDERING



APARTMENT T2E

GROSS PRIVATE AREA 85,3 SQM
CEILING HEIGHT 3,10 - 3,25 M
EXPOSITION: ALEXANDRE HERCULANO + DUQUE
DE PALMELA STREET
FLOOR 1-6



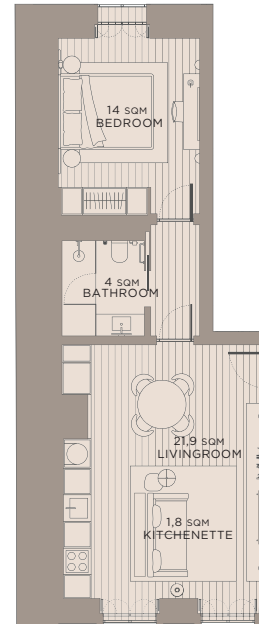
APARTMENT T1F

GROSS PRIVATE AREA 44,80 SQM
CEILING HEIGHT 3,10 - 3,25 M
EXPOSITION: ALEXANDRE HERCULANO STREET
FLOOR 1-6



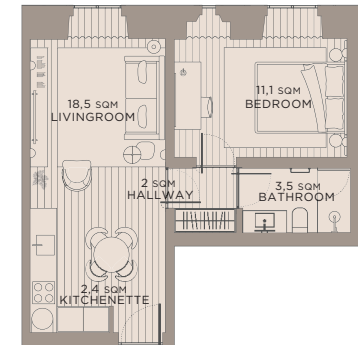


TOP
BEDROOM, APARTMENT T1A
RENDERING



APARTMENT T1A

GROSS PRIVATE AREA 61,55 SQM
CEILING HEIGHT 2,50 M
EXPOSITION: ALEXANDRE HERCULANO STREET +
COURTYARD
FLOOR 7

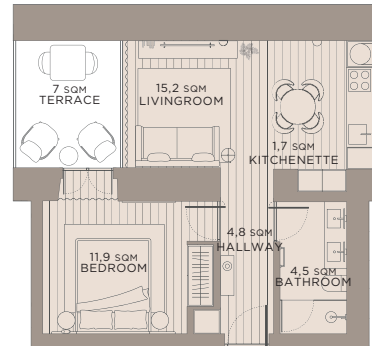


APARTMENT T1B

GROSS PRIVATE AREA 47,45 SQM
CEILING HEIGHT 2,50 M
EXPOSITION: COURTYARD
FLOOR 7

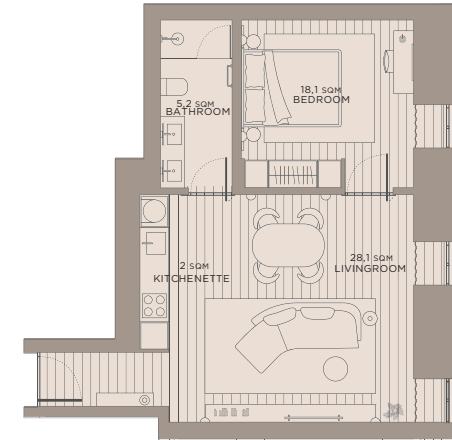


BOTTOM
BEDROOM, APARTMENT T1B
RENDERING



APARTMENT T1C

GROSS PRIVATE AREA 45,95 SQM
TERRACE 7 SQM
CEILING HEIGHT 2,50 M
EXPOSITION: COURTYARD
FLOOR 7

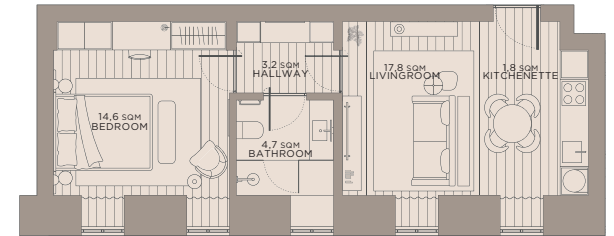
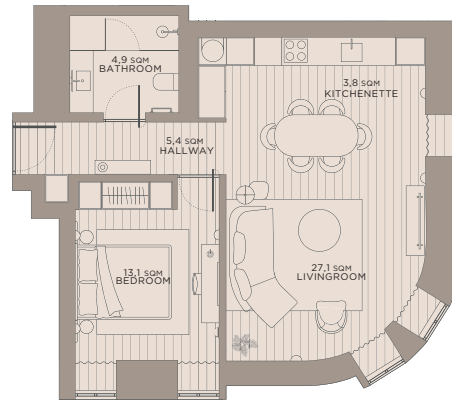


APARTMENT T1D

GROSS PRIVATE AREA 60,25 SQM
CEILING HEIGHT 2,50 M
EXPOSITION: DUQUE DE PALMELA STREET
FLOOR 7



LEFT
LIVING ROOM, APARTMENT T1C
RENDERING



APARTMENT T1E

GROSS PRIVATE AREA 69,40 SQM
 CEILING HEIGHT 2,50 M
 EXPOSITION: ALEXANDRE HERCULANO + DUQUE DE
 PALMELA STREET
 FLOOR 7



APARTMENT T1F

GROSS PRIVATE AREA 54,15 SQM
 CEILING HEIGHT 2,50 M
 EXPOSITION: ALEXANDRE HERCULANO STREET
 FLOOR 7



TOP
 LIVING ROOM, APARTMENT T1E
 RENDERING

BOTTOM
 BED ROOM, APARTMENT T1B
 RENDERING



THE TEAM BEHIND ANDO LIVING



OPTYLON KREA

OPTYLON KREA IS A PAN-MEDITERRANEAN REAL ESTATE DEVELOPMENT AND INVESTMENT MANAGEMENT GROUP.

FOUNDING PARTNERS, OPTYLON CAPITAL AND KREA REAL ESTATE HAVE A COMBINED TRACK RECORD OF €1.8 BILLION IN GROSS DEVELOPMENT VALUE IN 38 JUDICIOUS INVESTMENTS - RESIDENTIAL, MIXED-USED PROJECTS, YIELDING ASSETS AND SHOPPING CENTRES - IN 8 DIFFERENT CITIES THROUGHOUT PORTUGAL, TURKEY AND ROMANIA.

THIS TRANSLATES INTO OVER 1 MILLION SQUARE METERS OF OWNED, MANAGED, AND DEVELOPED PROPERTIES OVER THE YEARS. THIS IS ALSO SUPPORTED BY 6 INTERNATIONAL AWARDS.

HAVING VAST EXPERIENCES IN THE PORTUGUESE HOSPITALITY MARKET, THE GROUP MANAGES OVER 700 THIRD-PARTY APARTMENTS THROUGH ITS SUBSIDIARY LOVELYSTAY IN ADDITION TO ITS ANDO LIVING BRAND.

ARCHITECT
& INTERIOR DESIGNER

FREDERICO VALSASSINA - ARQUITECTOS

GRADUATED IN ARCHITECTURE FROM THE LISBON SCHOOL OF FINE ARTS IN JULY 1979.

HE HAS REFERENCE PROJECTS IN THE AREA OF REHABILITATION, NAMELY THE PALACE OF THE COUNTS OF MURÇA, THE CONTADOR-MOR PALACE AND THE RESIDENTIAL BUILDING ON AV. DA REPÚBLICA 37, ALL OF WHICH HAVE BEEN AWARDED THE NATIONAL PRIZE FOR URBAN REHABILITATION.

HE HAS DEVELOPED PROJECTS IN VARIOUS AREAS SUCH AS THE HERDADE DO FREIXO WINERY, IN ALENTEJO, THE ALCÂNTARA WASTEWATER TREATMENT PLANT ROOF, IN PARTNERSHIP WITH MANUEL AIRES MATEUS AND JOÃO NUNES, AND THE NEW CUF TEJO HOSPITAL IN LISBON.

AVROKO

LAUNCHED IN 2001, FOCUSING ON THE HOSPITALITY INDUSTRY, CREATING THOUGHTFUL AND ENGAGING ARCHITECTURE, BRANDS, PRODUCTS, AND ENVIRONMENTS.

AVROKO HAS EARNED A REPUTATION AS ONE OF THE MOST INNOVATIVE DESIGN FIRMS IN THE FIELD AND WON MULTIPLE AWARDS.

THE FIRM HAS GROWN TO FOUR OFFICES (NYC, BANGKOK, SAN FRANCISCO, AND LONDON) WORKING ON PROJECTS ACROSS 22 COUNTRIES IN 32 CITIES, LAUNCHED OVER A DOZEN COMPANY OWNED-AND-OPERATED RESTAURANTS, AND CREATED A FURNITURE AND LIGHTING COMPANY.

AVROKO SUPPORTS THE BRAND ANDO LIVING IN THE DEVELOPMENT OF THE INTERIOR IDENTITY.



TOP
COURTYARD OF VILA VIÇOSA CLUB,
ALENTEJO

CONSULTANT
& COMMUNICATION AGENCY

SERVOTEL

FOUNDED IN 1984 IN LONDON, SERVOTEL IS A LEADING BOUTIQUE CONSULTING PRACTICE WITH AN UNSURPASSED DEPTH OF EXPERIENCE, RESEARCH-BASED KNOW-HOW AND A HIGHLY SELECTIVE CLIENT BASE, INCLUDING INVESTORS, DEVELOPERS, HOTEL COMPANIES AND FINANCIAL INSTITUTIONS.

THE COMPANY'S DECADES OF EXPERIENCE SPANS THE MAIN AREAS OF ACTIVITY SUCH AS TOURISM, RECREATION, RESIDENTIAL REAL ESTATE AND OFFICE PROJECTS IN 43 COUNTRIES.

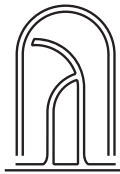
A WORK OF SUBSTANCE

WORK OF SUBSTANCE IS A COLLECTIVE OF PASSIONATE EXPLORERS FROM 15 COUNTRIES, WITH OFFICES IN HONG KONG, BALI AND PARIS. WE EXERCISE THE ART OF FORGETTING WHAT WE KNOW AND LOOK AT THE MAPS OF THE PAST, AS WE SCAVENGE FOR VIBRANT STORIES ABOUT THE PEOPLE AND CULTURES THAT OUR DESIGNS INHABIT.

THE TEAM, INCLUDING STRATEGISTS, EDITORS, GRAPHIC DESIGNERS, ARCHITECTS, LANDSCAPE DESIGNERS, INTERIOR DESIGNERS AND PRODUCT DESIGNERS ALLOW WOS TO SHAPE EVERY SINGLE TOUCH POINT.



TOP
COURTAYARD OF ALFAMA CLUB,
LISBON



ANDO

Living

WWW.ANDOLIVING.COM

LISBON, PORTO, ALENTEJO, ISTANBUL