









## 3 Dairy Cottages, Marsh Court Road Stockbridge, Hampshire, SO20 6JH

- Modern Kitchen/Breakfast Room
- Sitting Room with open fireplace
- Cloakroom
- Two Double Bedrooms
- Family Bathroom
- Private Garden & Patio
- Generous Driveway for 3+ cars
- No Onward Chain

### The Property

3 Dairy Cottages is a charming property constructed of cob elevations under a slate roof. The cottage benefits from natural light throughout and enjoys a peaceful and convenient location.

The kitchen comprises of fitted 'denim' blue Shaker units, solid composite (marmo blanco) worktop and integrated appliances including Neff double oven, one with microwave option, dishwasher, fridge/freezer and induction hob. There is sufficient space for a dining table and ample storage including a larder cupboard. There is a cloakroom and under-stairs cupboard.

The sitting room has a Jetmaster open fire with a brick hearth as well as garden views and access via the French doors onto the patio and cottage garden. This room in particular benefits from the South facing aspect and boasts natural light.

On the first floor is a spacious double bedroom with fitted wardrobes and double aspect views. The second bedroom is a small double with plenty of wardrobe/storage space. There is also a family bathroom with bath & overhead shower.

### Outside

The property is approached off Marsh Court Lane onto a shared gravel driveway. There is a generous private driveway with parking for more than three cars. The paved patio wraps around the south and west side of the property providing ample space for lounge or dining furniture. The garden is mainly laid to lawn with raised beds populated with established roses, perennials and spring bulbs.

The cottage enjoys a quiet position and is conveniently located within easy reach of Stockbridge High Street.

A charming and bright two bedroom end of terrace cottage,  
which is a level walk from Stockbridge High Street's amenities.

Tenure: Freehold Size: 824.3 ft<sup>2</sup> EPC Rating: F (31) Council Tax Band: D



Services - Mains Water, Drainage & Electricity, Calor Gas Heating.

Andover 8 Miles • Winchester 9 Miles • Romsey 10 Miles • Salisbury 16 miles





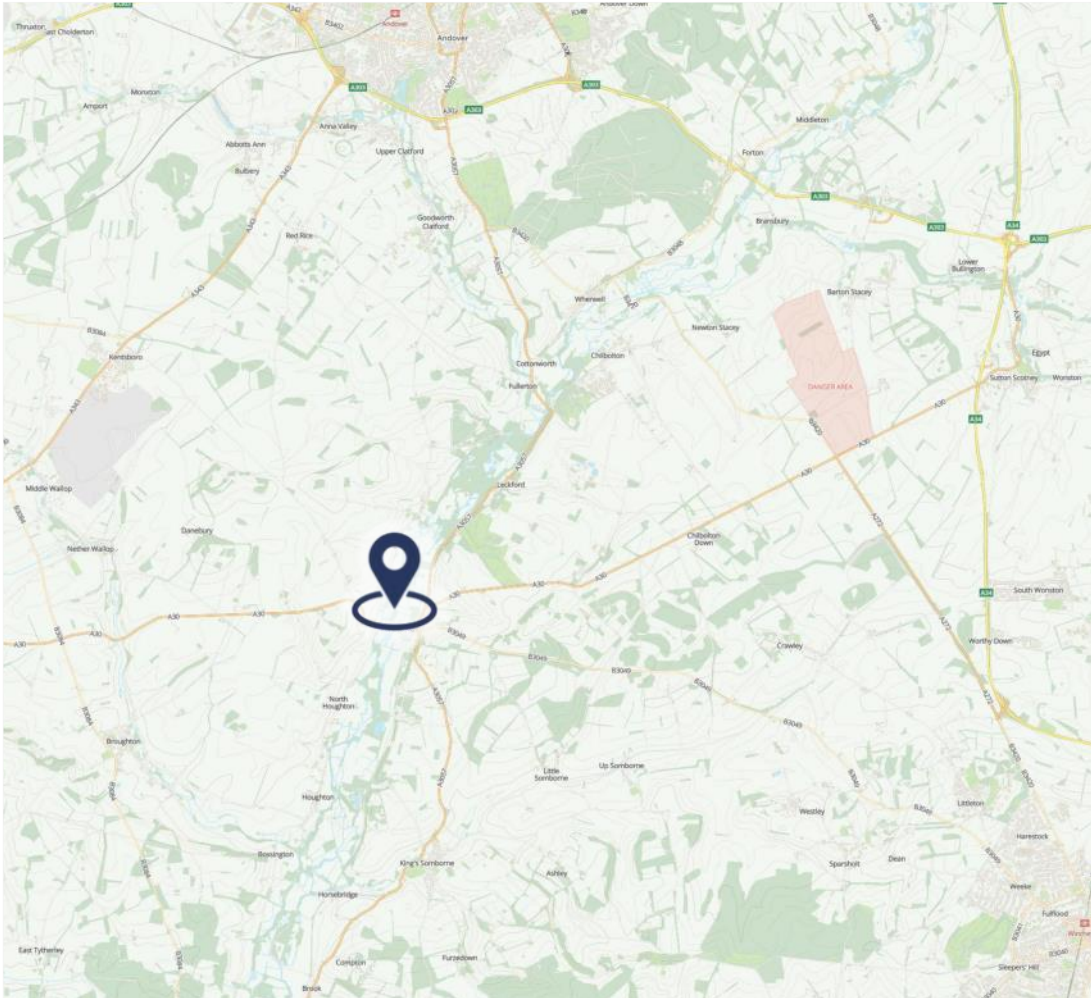
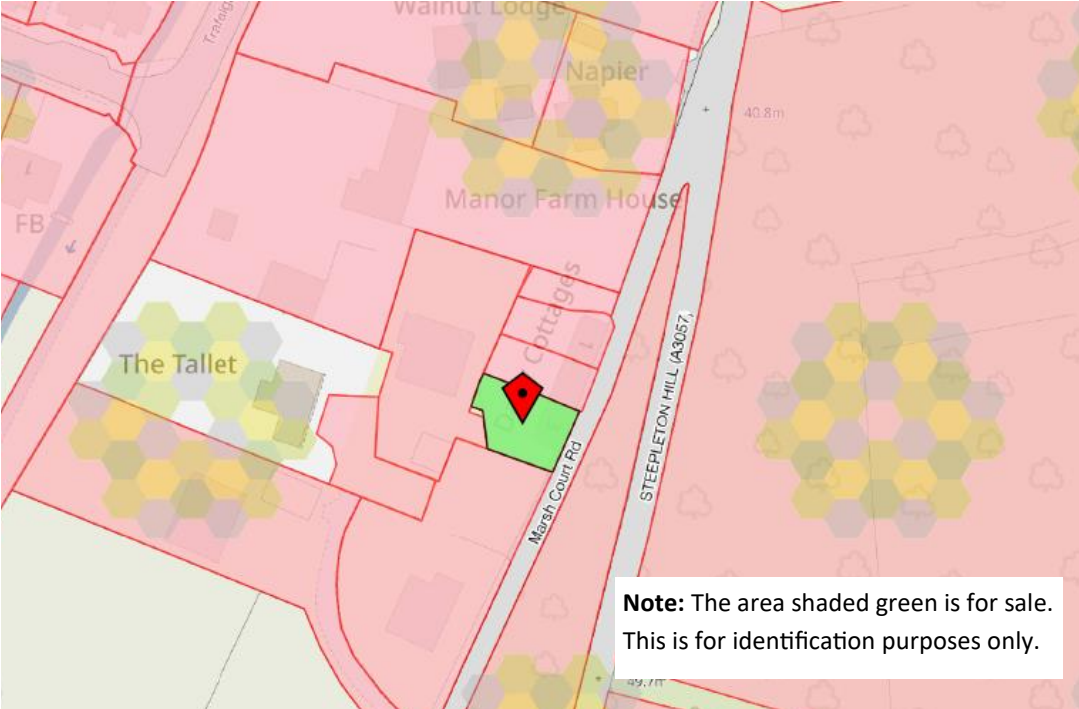




### Location

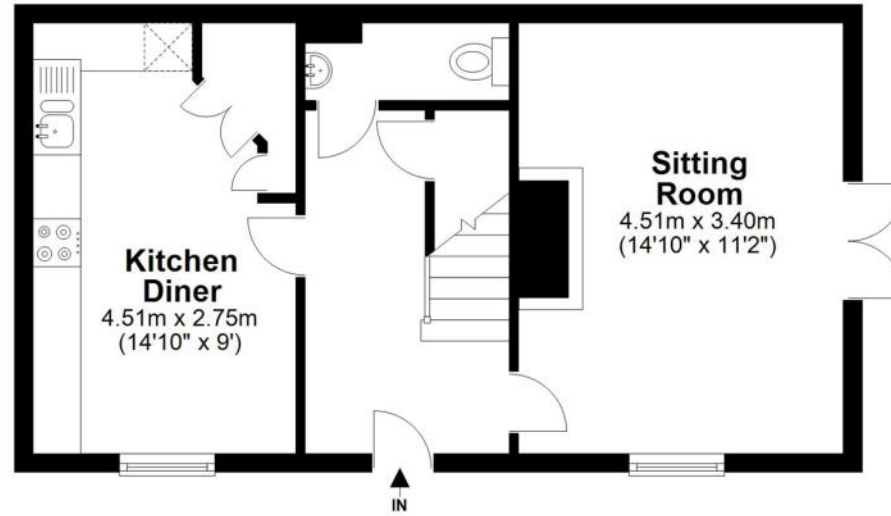
Stockbridge High Street is only a few minutes paved and level walk to a range of independent shops, restaurants, a post office and co-op. There is also a Church, doctors surgery, dental practice and opticians. Stockbridge Water Meadows are easy reach along Marsh Court Road providing access to a wonderful walks as well as the Test Way. Within 11 miles is the picturesque and bustling market town of Romsey with its famous Abbey and array of shops, restaurants and amenities.

The cathedral cities of Winchester and Salisbury are within a 30 minute drive offering extensive amenities, leisure activities and restaurants. In addition Winchester train station provides services to London Waterloo in under 1 hour.

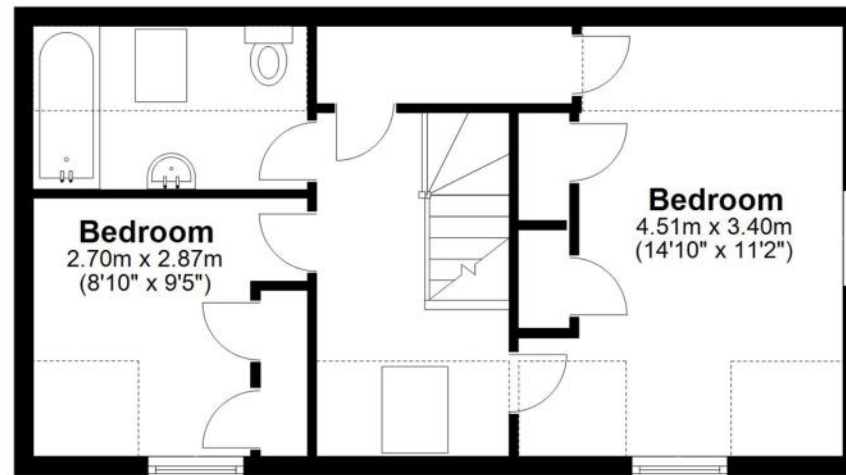


# 3 Dairy Cottages, Stockbridge - Floorplan

## Ground Floor



## First Floor



**Note** - The dashed lines represent slightly lower head height on the first floor.

Total area: approx. 76.6 sq. metres (824.3 sq. feet)

FOR EXCLUSIVE USE BY MYDDELTON MAJOR ESTATE AGENTS  
Plan for illustration only. Windows and doors are approximate. Whilst care is taken preparing this plan, please check details before making decisions reliant upon them. Measured and drawn to RICS guidelines  
COPYRIGHT CLEARPLANZ





Upper kitchen cabinets in light blue, featuring a combination of solid doors and glass-fronted doors. The glass-fronted doors reveal shelves with dishes and glassware. A stainless steel range hood is integrated into the cabinetry above the countertop.

White countertop with a light-colored, veined backsplash. On the left, a white toaster and a stack of plates are visible. On the right, a chrome faucet is mounted over a sink.

Lower kitchen cabinets in light blue, including drawers and solid doors, all equipped with white round knobs. The cabinets are set against a light-colored wall.

A round wooden dining table in the foreground, accompanied by a wooden chair. A clear glass vase filled with a bouquet of pink and white flowers sits on the table.

A patterned curtain with a repeating motif of birds and leaves in shades of blue, white, and yellow, hanging on the left side of the kitchen.



