

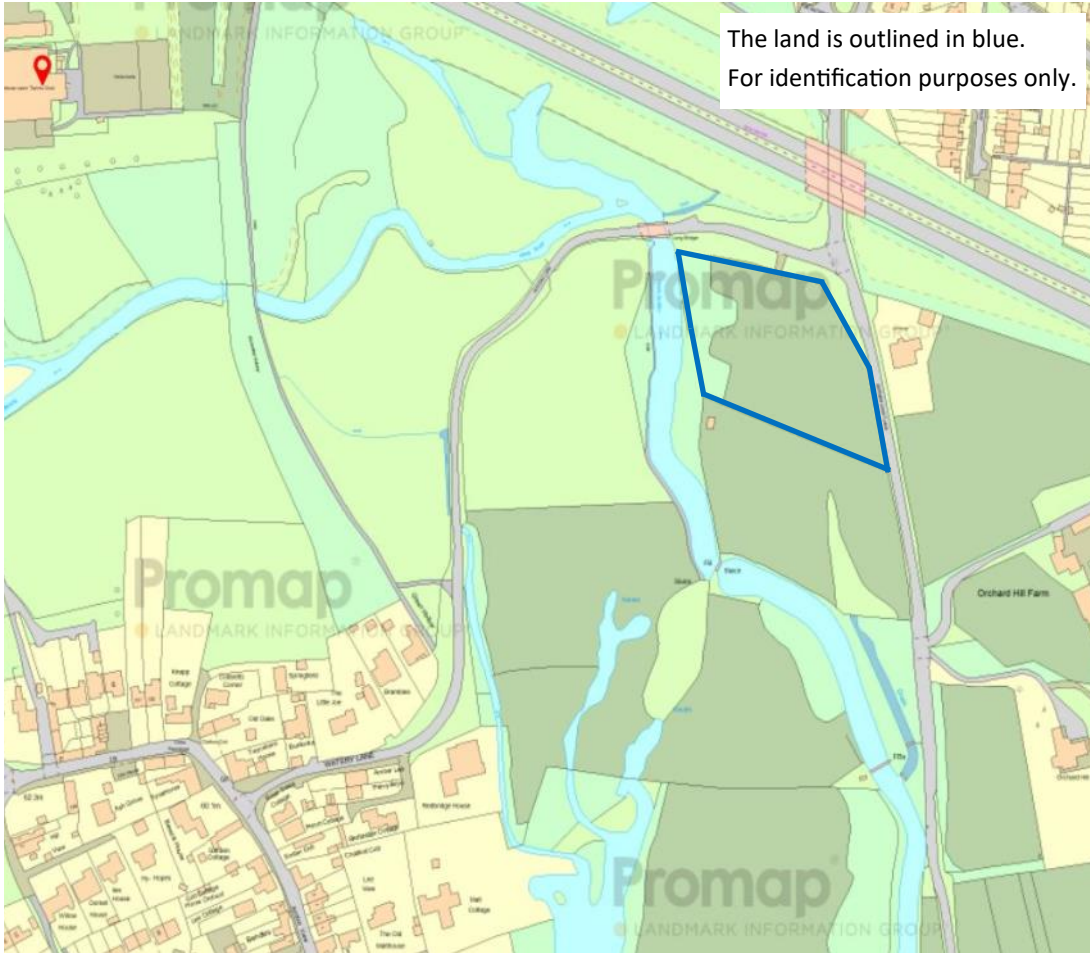


Lola's Meadow, Watery Lane, Upper Clatford, Andover, SP11 7PS

Lola's Meadow is 2 acres of meadow land with Poplar trees on the edge of the River Anton which is the on the outskirts of the village of Upper Clatford.

A field gate provides access to the land which is off Watery Lane. The extent of the land is shown outlined in blue on the plan below.

Set in the Test Valley, an area which is renowned for fishing and beautiful countryside and the site itself offers far reaching views over the surrounding area.



The town of Andover is approximately two miles to the north of the meadow. There is good access onto a road network including the nearby A343 Andover to Salisbury road and to the A303 trunk road, a major road link to East and West Country. The area is near to the ancient Hill Fort of Bury Hill which is a protected area of woodland.

The Cathedral cities of Winchester (*14.6 miles*) and Salisbury (*12.7 miles*) are also nearby with extensive amenities. Also nearby is the popular town of Stockbridge (*6.8 miles*) with it's unique array of boutique shops, pubs etc and straddling the stunning River Test.

