



Trevena, Stockbridge

Myddelton & Major





Trevena, Winton Hill, Stockbridge, Hampshire, SO20 6HL

- Entrance Hall
- Kitchen/Breakfast room
- Drawing room & Dining room
- Study/Family room
- Cloakroom & Two Bathrooms
- Garden room
- Cellar
- Five Bedrooms
- Detached single garage
- Annexe potential

The Property

With its striking façade, typical of a period property, Trevena offers a wealth of character and bright accommodation in the much sought-after small town of Stockbridge.

On the ground floor, the drawing room benefits from traditional high ceilings with ornate corning. A grand bay window with pine shutters allows for plenty of natural light to flood into this elegant room, which is complemented by an atmospheric colour scheme (Fired Earth's Ultramarine Ashes) and the same original flooring that runs throughout the property. The open fireplace with marble surround is the natural focal point.

The impressive study, featuring the companion bay window and shutters to those of the drawing room, is a valuable space that could also serve as a family room.

The sophisticated colour palette continues throughout Trevena, with a mature and moody theme to the classic dining room, which also features a woodstove with a charming exposed brick surround and wooden mantelpiece.

At the heart of the home, the large, rustic kitchen/breakfast room features a spacious larder, rich wooden cabinetry and dual fuel range cooker.

Two staircases lead to the first floor, which comprises 5 spacious bedrooms, three of which have generous fitted wardrobes, and two bathrooms. The bedrooms all enjoy excellent views, either towards the high street to the front, or onto the well-stocked garden to the rear of the house. In the Agent's opinion there is the opportunity to divide the property resulting in an annexe situated at the rear of the house (refer to proposed floor plan).

Additional space, primarily for storage, is also available on the second floor (accessed by a permanent staircase), in the cellar and the garage/store outside.

A stunning period townhouse, rich in history with period features,
nestled just a short walk from Stockbridge high street.

Tenure: Freehold Size: 2,540.4 ft² (Main house) EPC Rating: G (10) Council Tax Band: G



5



2



2



2

Services - Mains water, drainage and electric, LPG central heating.

Winchester 9.6 Miles • Andover 8.1 Miles • Salisbury 15.7 Miles • Romsey 10.4 Miles





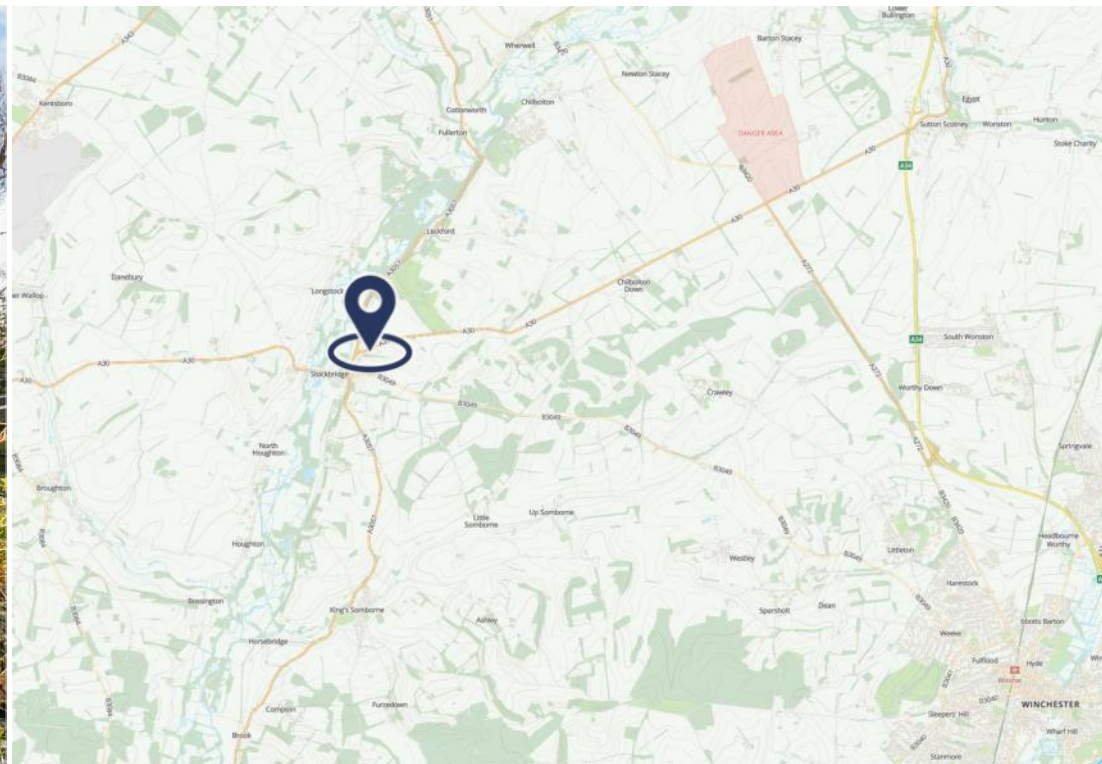


Outside

The private south facing garden to the rear of the property has been beautifully landscaped. Steps lead to a spacious paved terrace, creating an intimate area ideal for alfresco dining. The surrounding flowerbeds, filled with spring bulbs, prairie grasses, perennials and shrubs add year-round interest. There are also five useful raised beds for the avid vegetable gardener. A blend of roses, climbers and a fig tree embellish the property, furthering its appeal.

Location

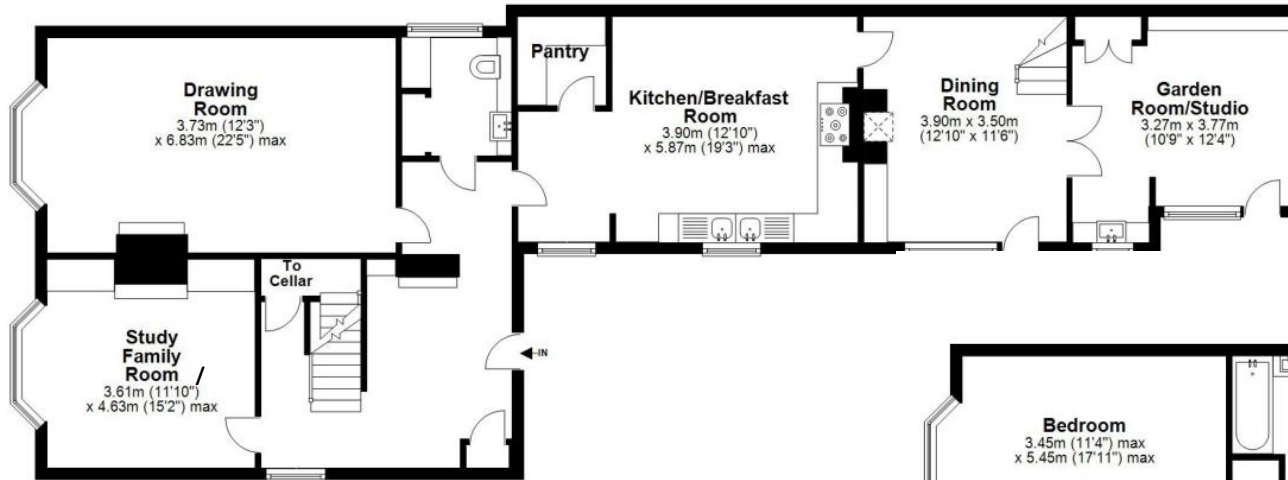
Trevena is situated in a prime position to enjoy all the benefits of historic Stockbridge with its independent shops, bars and restaurants. Wonderful countryside walks are within minutes from the property including Stockbridge Common and the Test Way. The Cathedral City of Winchester is a 20 minute drive from the property and Salisbury is within a 30 minute drive, both offering extensive amenities, leisure activities and restaurants. Andover train station is 8.4 miles distance with services to London Waterloo in 1 hour 10 minutes. Winchester train station is 8.5 miles distance providing a fast train service to London Waterloo in 45 minutes. Stockbridge Primary School and Test Valley Secondary School are located in the village. Peter Symonds Sixth Form College, Sparsholt and Andover College are within commuting distance. Local Independent preparatory schools include Farleigh, Pilgrim's and Princes Mead with Winchester College and St Swithun's in Winchester and Godolphin in Salisbury. Many of these can be reached by buses from Stockbridge town.



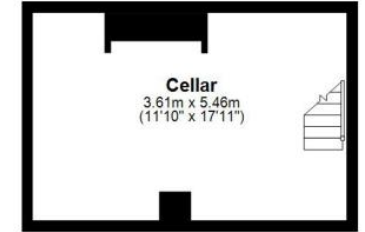
Trevena, Old Winton Hill - Floor plan



Ground Floor



Cellar

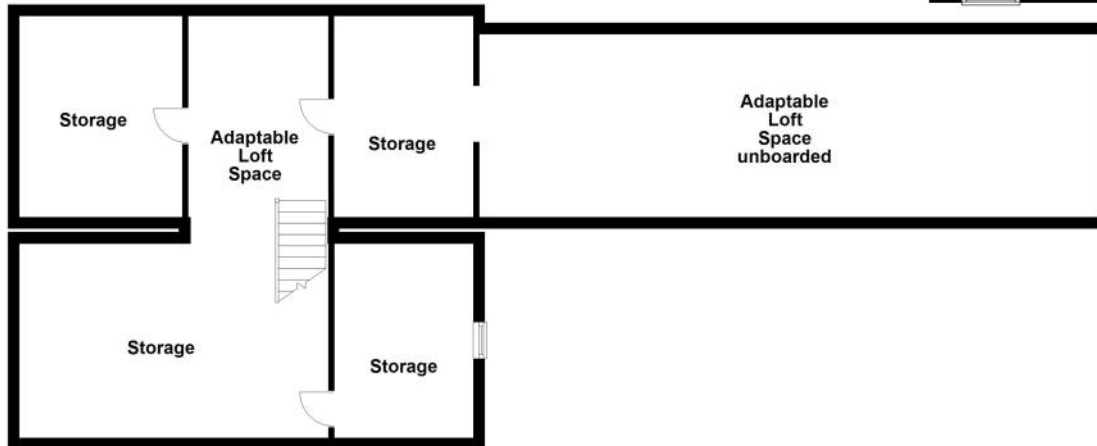


First Floor

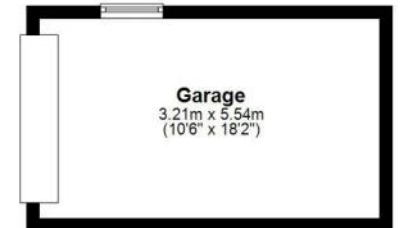


Second Floor

Approx. 92.7 sq. metres (998.3 sq. feet)



Outbuilding



Main House (cellar, ground & first floor) - 236 sqm / 2,540.4 sqft

Second floor (loft) - 92.7 sqm / 998.3 sqft

Garage - 17.8 sqm / 191.4 sqft

Total area: approx. 346.5 sq. metres (3730.1 sq. feet)

FOR EXCLUSIVE USE BY MYDDELTON MAJOR ESTATE AGENTS

Plan for illustration only. Windows and doors are approximate. Whilst care is taken preparing this plan, please check details before making decisions reliant upon them. Measured and drawn to RICS guidelines

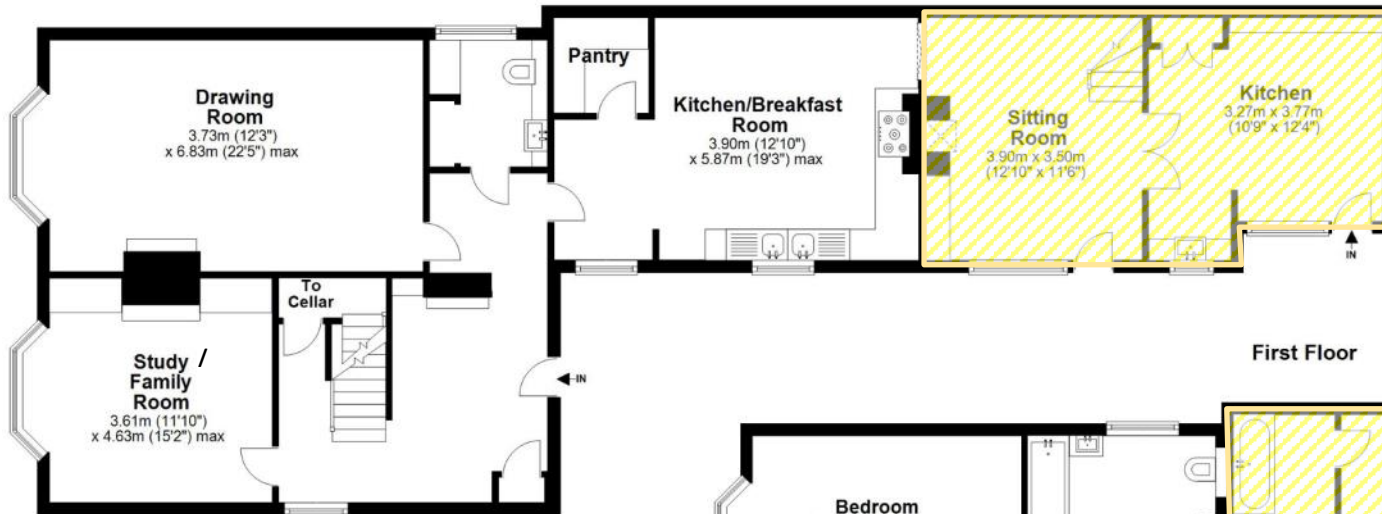
COPYRIGHT CLEARPLANZ

Plan produced using PlanUp.

Proposed Floor Plan with Annexe

Annexe = 

Ground Floor



First Floor



Annexe (ground & first floor) - 58.4 sqm / 608.4 sqft





Disclaimer Notice

Myddelton & Major and their clients give notice that: i) they have no authority to make or give any representations or warranties in relation to the property; ii) these particulars do not form part of any offer or contract and must not be relied upon as statements or representations of fact; iii) any areas, measurements or distances are approximate. The text, photographs and plans are for guidance only and are not necessarily comprehensive. It should not be assumed that the property has all the necessary planning, Building Regulation or other consents, and, any services, equipment or facilities have not been tested by the agent; iv) the purchaser must satisfy themselves by inspection or otherwise.

The Old Police House, High Street, Stockbridge, Hampshire, SO20 6HE
01264 810 400 stockbridgeresidential@myddeltonmajor.co.uk
www.myddeltonmajor.co.uk



Myddelton & Major